

# RCRCA 2019 YEAR-IN-REVIEW

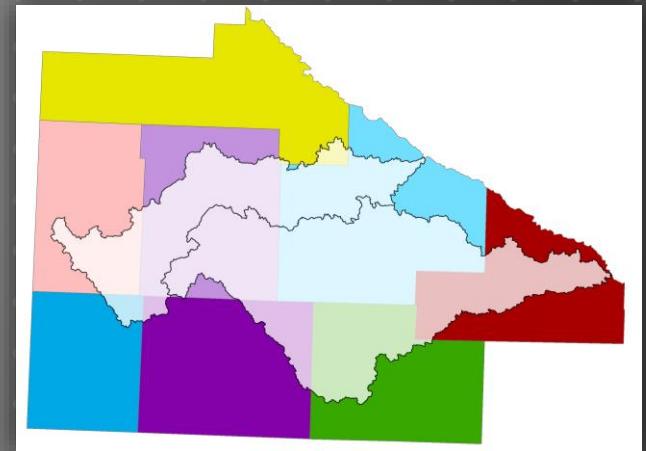


# REDWOOD-COTTONWOOD RIVERS CONTROL AREA (RCRCA)

8 County and 8 SWCD Joint Powers Organization  
pursuant to MN Statutes Section 471.59

*Partner Counties:*

*Brown, Cottonwood, Lincoln, Lyon, Murray,  
Pipestone, Redwood and Yellow Medicine*



**16 Member Board of Directors consisting of an appointed  
Commissioner and SWCD Supervisor from each county**

*Funding consists of \$75,000  
from county appropriations*

# RCRCA'S MISSION STATEMENT

RCRCA, in cooperation with partner groups and individual landowners, works to:

- improve water quality,
- reduce erosion, and
- provide enhanced recreational opportunities

by providing education, outreach, monitoring and technical assistance within the watershed boundaries.

# RCRCA BOARD OF DIRECTORS

(COMMISSIONER / SWCD SUPERVISOR)



- Executive Board Members  
3 SWCD / 3 Commissioners

- ▶ **Brown County**
  - ▶ Jeff Veerkamp; Jeff Nielsen
- ▶ **Cottonwood County**
  - ▶ Larry Anderson; Clark Lingbeek
- ▶ **Lincoln County**
  - ▶ Joe Drietz; Glen Sorensen
- ▶ **Lyon County**
  - ▶ Rick Anderson; Mark Meulebroeck
- ▶ **Murray County**
  - ▶ Lori Gunnink; Paul Posthuma
- ▶ **Pipestone County**
  - ▶ Luke Johnson; Larry Fenicle
- ▶ **Redwood County**
  - ▶ Lon Walling; Ed Carter
- ▶ **Yellow Medicine County**
  - ▶ Glen Kack; Tom Remmele

# RCRCA STAFF

- ▶ Kerry Netzke, Executive Director  
*(6 years of service)*
- ▶ Joy Bruns, Office Manager  
*(9 years of service)*
- ▶ Bill Moldestad, PE, Watershed Engineer  
*(17 years of service)*
- ▶ Shawn Wohnoutka, Watershed Technician  
*(16 years of service)*



# ACTIVITIES

Determine watershed “Priority Areas” based on GIS, research, and water quality assessments.

Accelerate conservation adoption through securing additional funding for BMP cost share, long-term monitoring, GIS/Outreach and technical assistance.

Track and report BMP successes, re-evaluate priority areas, and re-focus efforts.

## ENDING GRANTS:

\$77,000 Watershed Restoration & Protection Strategies (WRAPS) Planning Grant  
(6/30/2020)

## CONTINUING GRANTS:

\$210,741.65 Watershed Pollutant Load Monitoring Network (WPLMN) Grant  
for both watersheds (6/30/2020)  
*(2-year Amendment until 6/30/2022 with additional funding)*

~\$9,000 Discovery Farms Minnesota; *reimbursed time & mileage*

\$5,500 MN Dept. of Ag Pesticide Monitoring (annual purchase order)

\$200,000 Watershed Restoration And Protection Strategies (WRAPS) Grant  
for the Cottonwood Watershed

\$200,000 Watershed Restoration And Protection Strategies (WRAPS) Grant  
for the Redwood Watershed

# GRANTS

## GRANT APPLICATIONS:

\$180,000 Clean Water Funds (BWSR) Upper Three Mile Creek

\$45,000 local match for 75/25 cost-share



\$150,000 Clean Water Funds (BWSR) Plum Creek

100% match to federal 319 Funds

increase from 60/40 to 75/25 cost-share



## NEW GRANTS:

\$7,300,000 State of Minnesota Bonding  
Lake Redwood Reclamation & Enhancement Project

(\$900,000 local contribution from the City of Redwood Falls)

# GRANTS



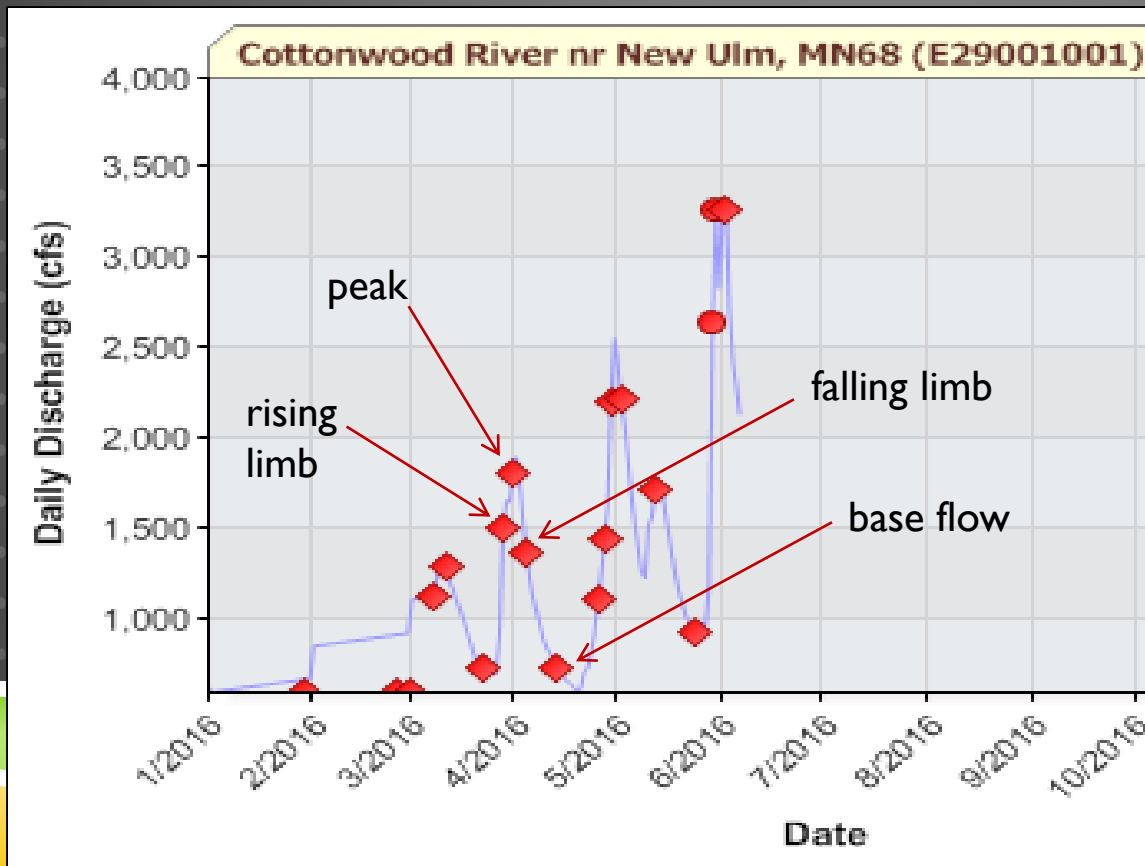
# WATER QUALITY MONITORING

Shawn Wohnoutka conducts sampling for 3 separate grants consisting of 384 samples taken thru Nov. 1, 2019.

- ▶ 218 samples for MPCA's Watershed Pollutant Load Monitoring Network (WPLMN) – 3 sites are year round, 4 sites are from ice-out to October 31.
- ▶ 61 samples for MN Department of Ag for pesticide residue testing, + 3 lake samples -- May - August
- ▶ 102 samples for Discovery Farms

~9,300 miles/year

# MPCA's Watershed Pollutant Load Monitoring Network (WPLMN) continues for the Redwood and Cottonwood watersheds.



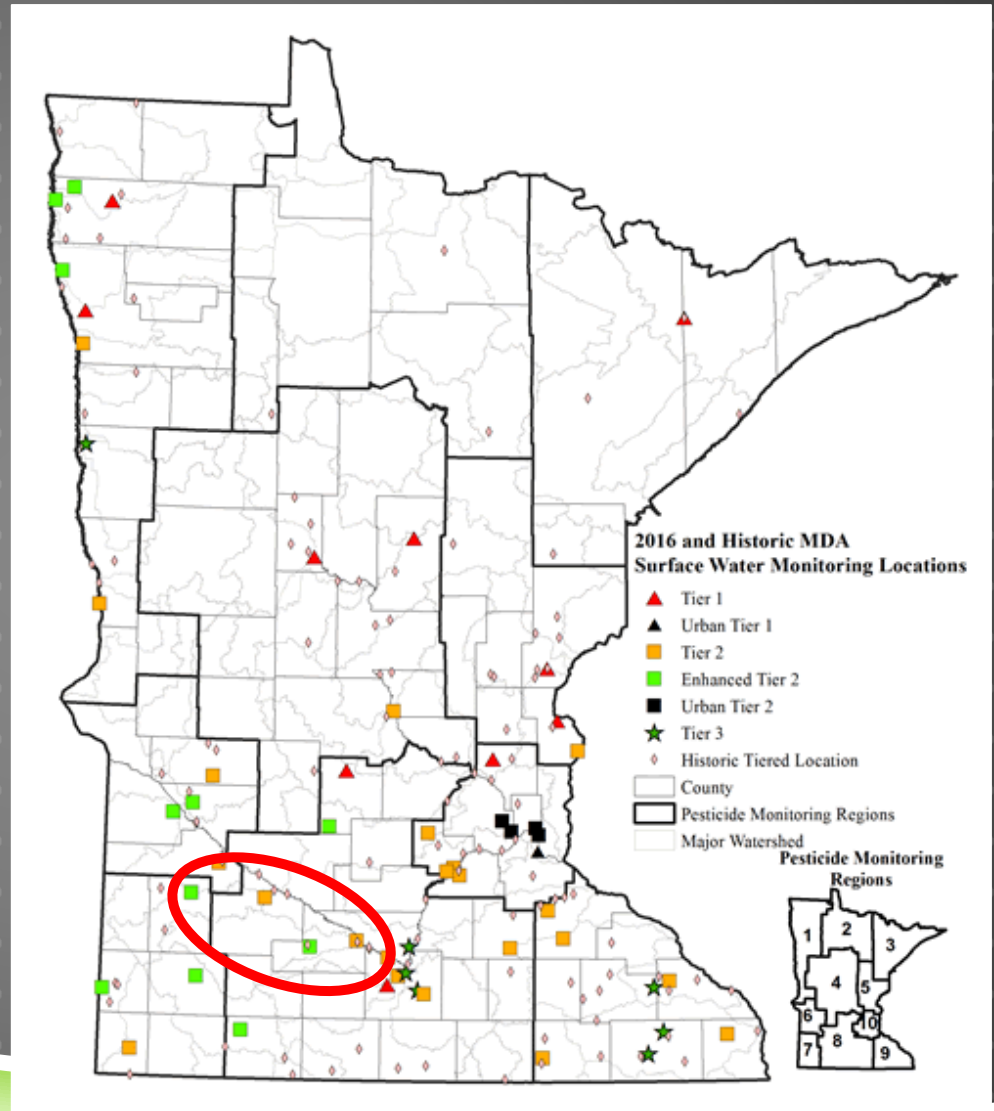
- 3 sites in the Cottonwood River watershed
- 3 sites in the Redwood River watershed
- 1 site on the Minnesota River (Morton, MN)

# Minnesota Dept. of Ag's Pesticide Monitoring

*May thru August – storm-based stream sampling of 4 streams, and Double Lake North (August only)*

With over 30 years of monitoring data, the MDA operates one of the few programs with sufficient long term data to evaluate changes in water quality over time.

Minnesota's pesticide monitoring program is one of the most comprehensive in the country and is regarded as a national leader.



**138** detectable pesticides



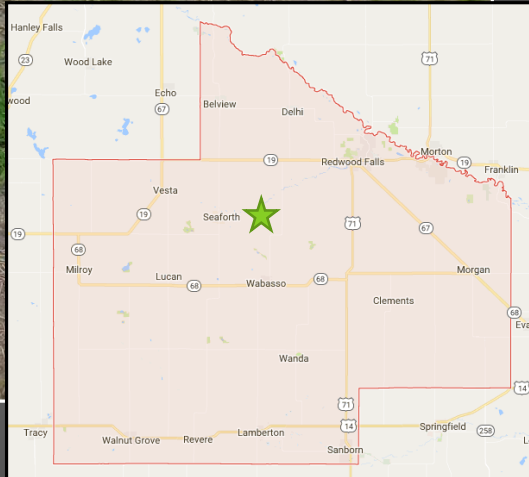
Discovery Farms Minnesota is a farmer-led effort to gather field scale water quality information from different types of farming systems, in landscapes all across Minnesota.

The goal is to provide practical, credible, site-specific water quality information to enable better farm management.

The program collects accurate measurements of sediment, nitrogen and phosphorus movement over the soil surface and through subsurface drainage tiles. This work leads to a better understanding of the relationship between agricultural management and water quality.



<https://discoveryfarmsmn.org>





Deane River 14

**RCRCA**  
Redwood Cottonwood Rivers Control Area  
1-507-637-2142

**RCRCA**  
Redwood-Cottonwood Rivers Control Area  
1-507-637-2142

**RCRCA**  
Redwood-Cottonwood Rivers Control Area  
1-507-637-2142

# 2019 Outreach Activities

# CANOETRIIP

## REDWOOD ONLY





- ▶ The Environmental Fair gathers 5th & 6th grade students from a 11-county area in September.

The 2-day event provides fun-filled learning about the world around us through demonstrations and student participation.

Topics include: trees, native prairie, ground and surface water, erosion/flooding, soils, wetlands, watersheds, wildlife and much more!

# SW MN ENVIRONMENTAL FAIR



In 2019, 183 students from 9 schools visited RCRCA's stream table exhibit.

Shawn speaks about different kinds of pollution and what can be done to protect our land and water.

The stream table shows in 5 minutes the erosion that can happen over a period of 30 years or more.

ALL students left with RCRCA water bottles, compliments of the Redwood River Turbidity Reduction Grant through MPCA.





In 2019, the St. Matthew Lutheran Youth Group of Wabasso assisted with the twice-per-year clean up effort of the 2-mile stretch of Hwy 19 near Vesta, MN where the Redwood River crosses.

RCRCA and Area II proudly presented the group with a \$400 donation towards their mission trips and work.

**ADOPT-A-HIGHWAY**

# LAKE REDWOOD RECLAMATION AND ENHANCEMENT PROJECT

~~M.L. 2018, ART. 6, CHAP. 214, SEC. 4, SUBD. 6(2)~~

M.L. 2019, ART. 1, CHAP. 2, SEC. 2, SUBD. 4



# LAKE REDWOOD

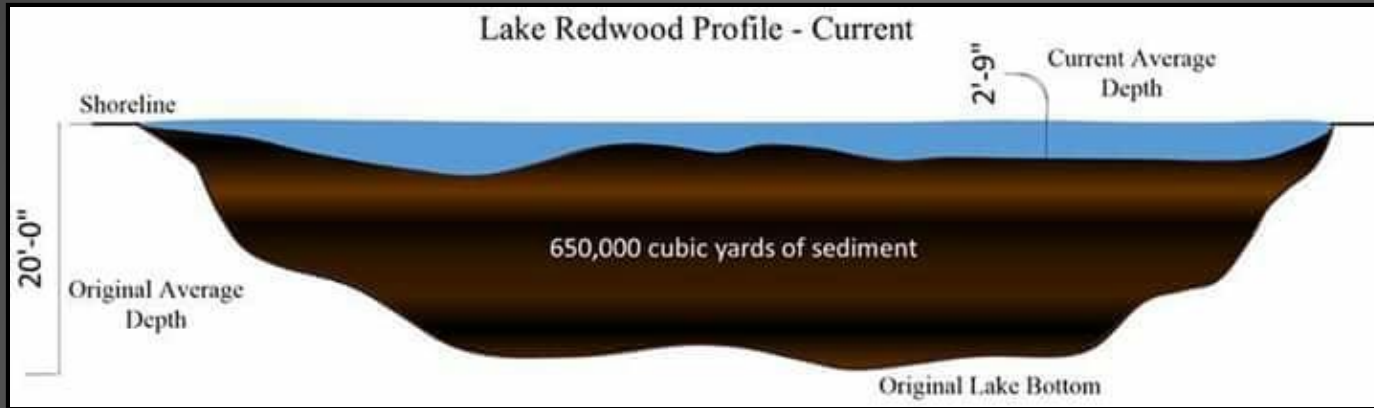


1960's

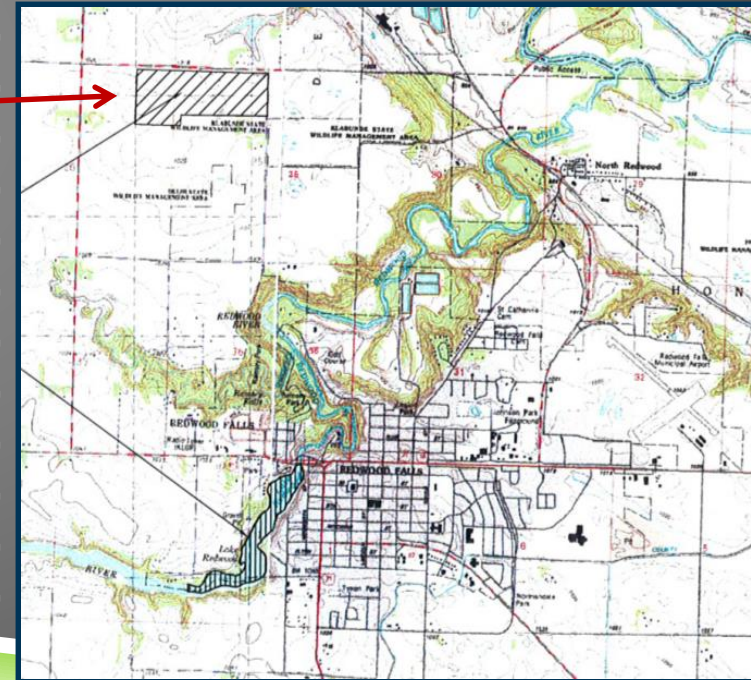


Today

- ▶ Dredge to 20' depth
- ▶ Remove up to 650,000 cubic yards of sediment



- ▶ 135-acre dewatering pond site
  - ▶ To be owned by the City of Redwood Falls
  - ▶ Return to agricultural production
  - ▶ Future dewatering use, if needed
- ▶ 4 years to complete
- ▶ Future park enhancements from rental income
- ▶ Continued improvements in the watershed



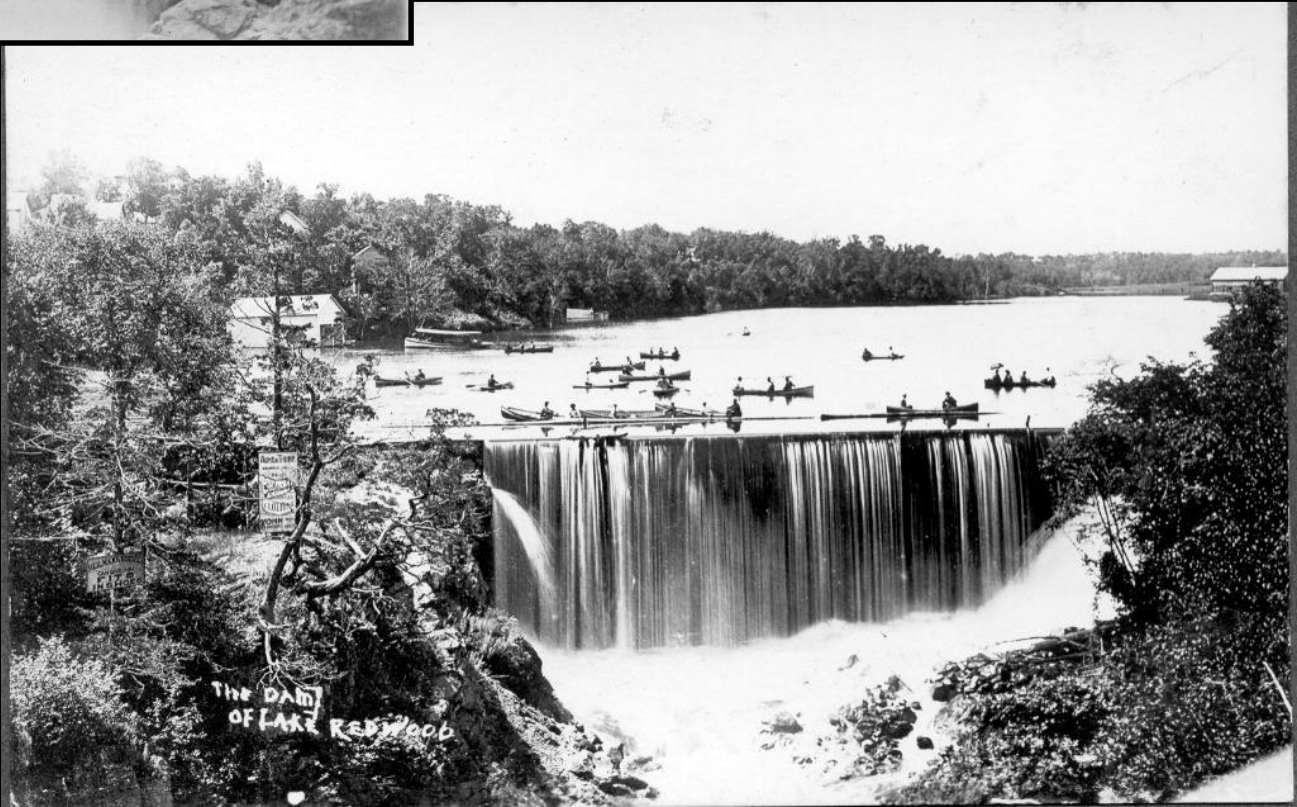
## PROJECT GOALS & OPPORTUNITIES

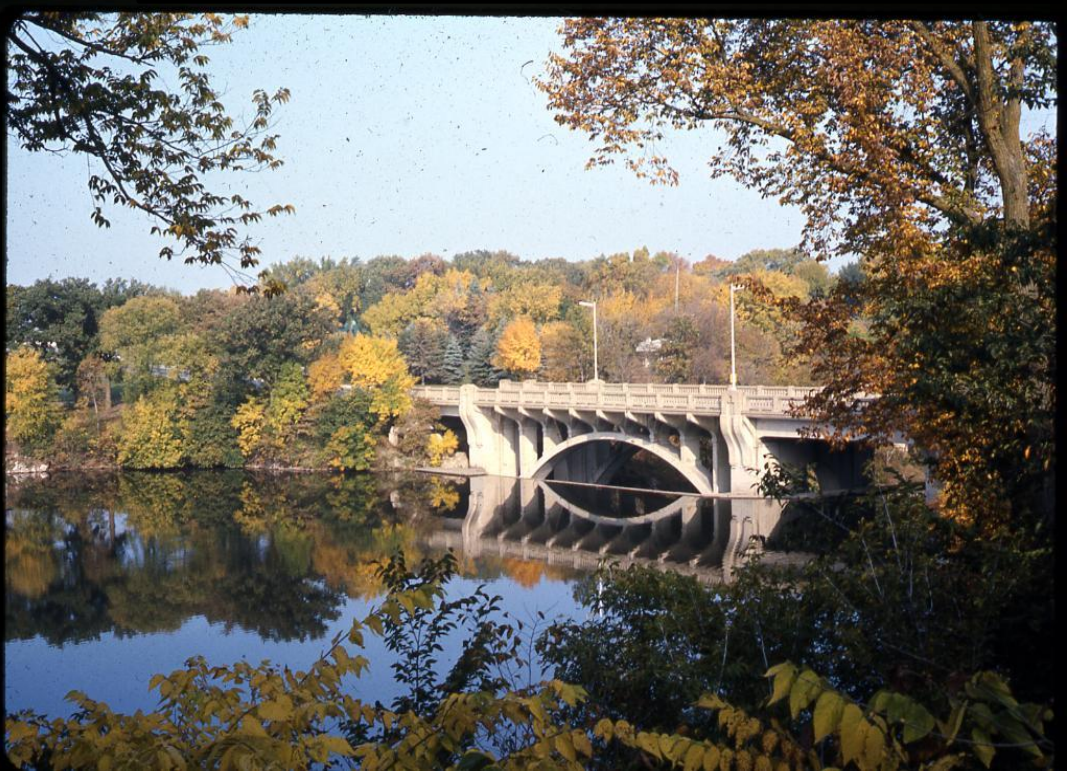
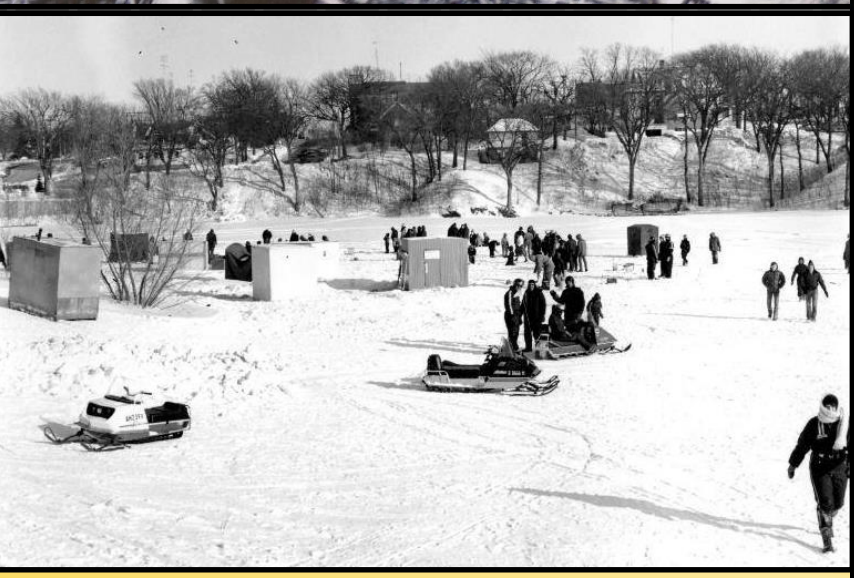


1902



Catch at Lake Redwood  
1908







1950's - 1970's



## Present Conditions...

- Very limited recreation
- Loss of habitat
- Not classified as a “lake”
- Limited capacity for hydroelectric power



Since 1994,  
TSS loading has  
decreased by 75%!



# Proposed Lake Redwood Improvements

Fitness  
Trail

Pedestrian  
Bridge

Riverfront  
Park

Fitness  
Trail

Lookout

Fountains



# CURRENT STATUS



- ▶ Contract between RCRCRA (fiscal agent) and the State of MN signed 6/7/2019
- ▶ Houston Engineering, Inc. retained for project design and management
- ▶ Permit re-applications being made
- ▶ Land acquisition discussions are ongoing with dewatering pond property owners
- ▶ Informational Meeting scheduled for those living around the lake, along the proposed pipeline route and adjacent to the dewatering pond.

# 4-YEAR SCHEDULE

- ▶ 2019:
  - ▶ Informational meeting
  - ▶ Final Design/Permit Applications
  - ▶ Land Acquisition
- ▶ 2020:
  - ▶ Obtain permits
  - ▶ Complete land acquisition
  - ▶ Let bids for dewatering pond and pipeline construction
  - ▶ Let bids for dredging operations
- ▶ 2021:
  - ▶ April – November: Active dredging operations
- ▶ 2022:
  - ▶ April – November: Active dredging operations;
  - ▶ Project closeout



# TOUR OF FOUNTAIN LAKE DREDGING AT ALBERT LEA, MN



1919 • CELEBRATING 100 YEARS • 2019





- ▶ Pumps require 1000 gallons of diesel fuel per day
- ▶ Also require additional water to add to the sediment









For more information about RCRCA,  
check our website at [www.rcrca.com](http://www.rcrca.com)

**THANK YOU**  
for your continued support of both organizations!