



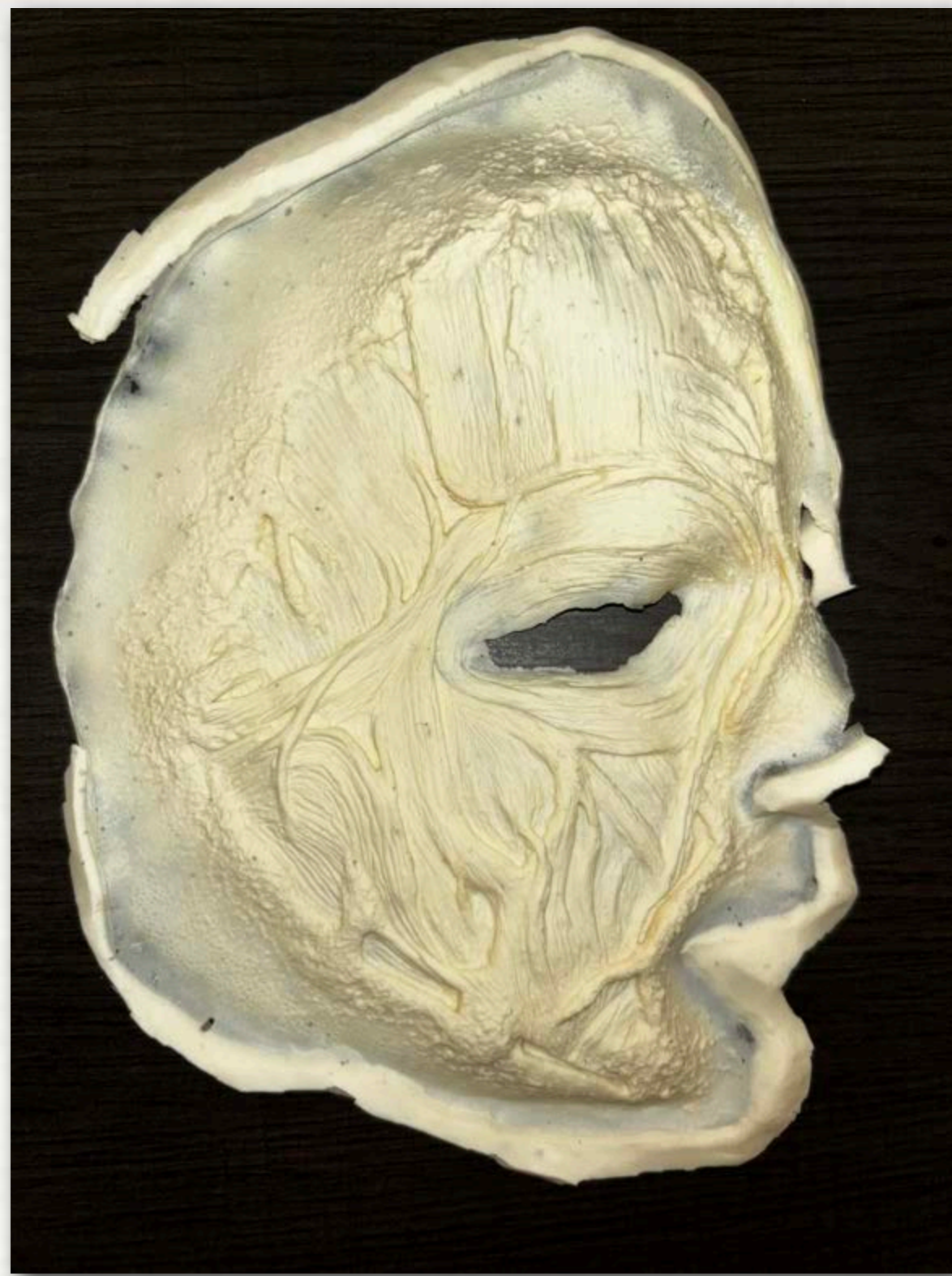
Cayci Jean Luiten

719.231.2130

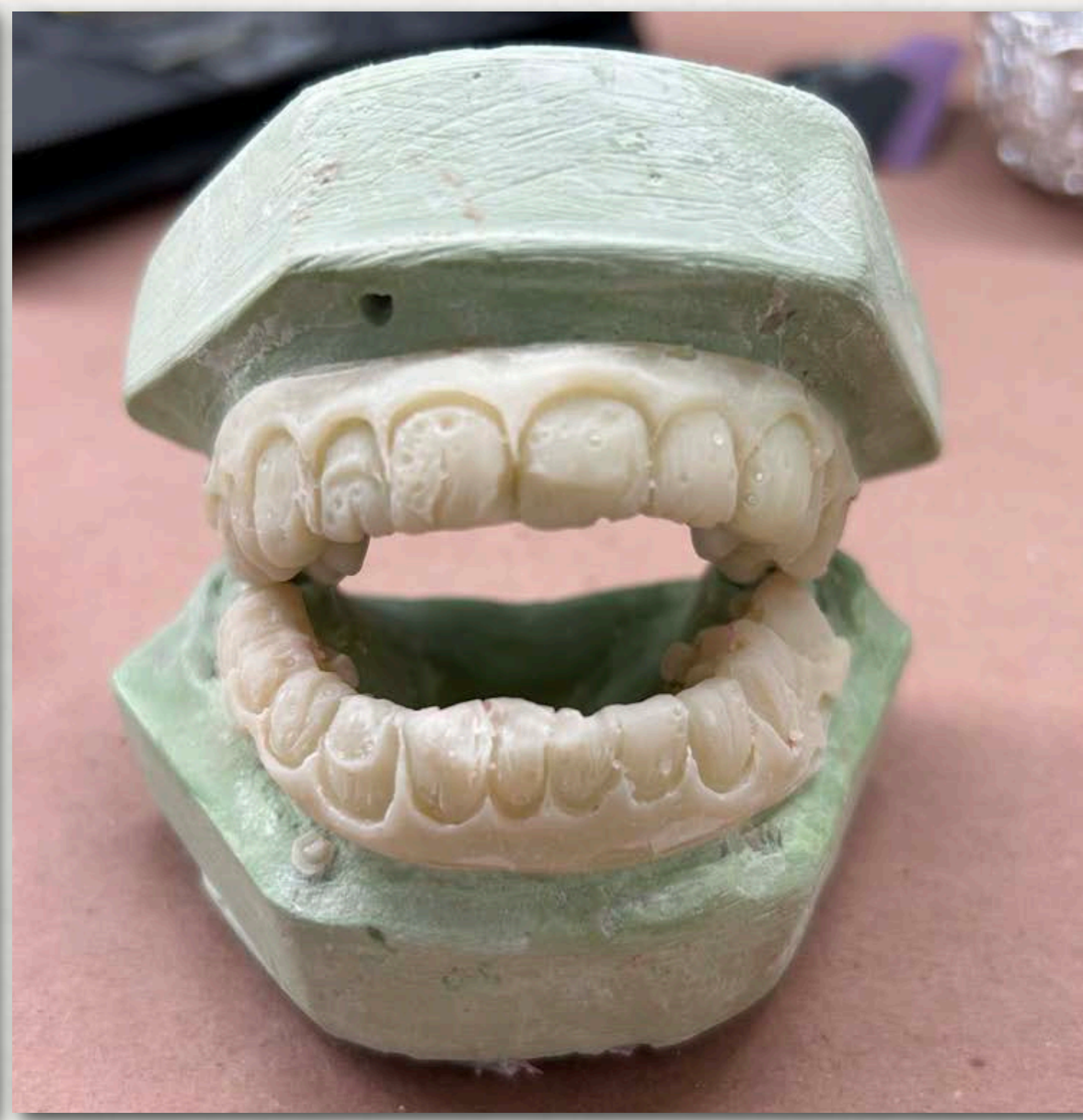
caycijeanmua@gmail.com

Los Angeles, CA.

Shop Portfolio



Progression of clay sculpt for exposed muscle makeup
Sculpted with Chavant NSP
Sculpt ran with foam latex
Painted with Rubber Mask Grease and Skin Illustrator alcohol paint
Foam Latex appliance applied to right side of the face
Third Degree Silicone and Gelatin blisters applied to the left side of the face



Teeth sculpted, molded, and painted for the exposed muscle makeup
Sculpted with Chavant NSP Medium
Molded in dental acrylic
Painted with Skin Illustrator alcohol paints

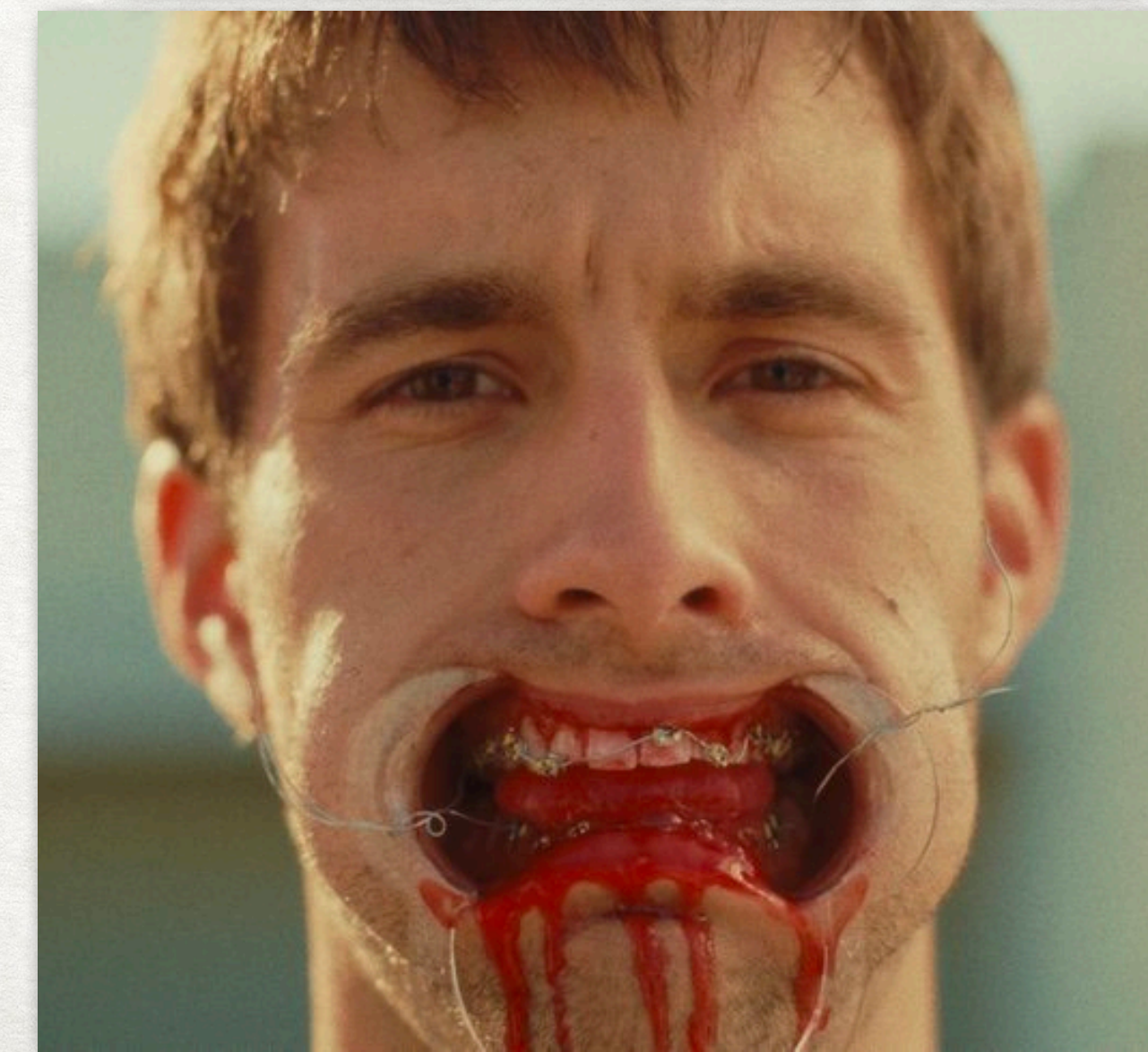


Custom braces made for film “Say Cheese”

Braces are made from real brackets, bands, and wires attached to a vacuum form retainer piece

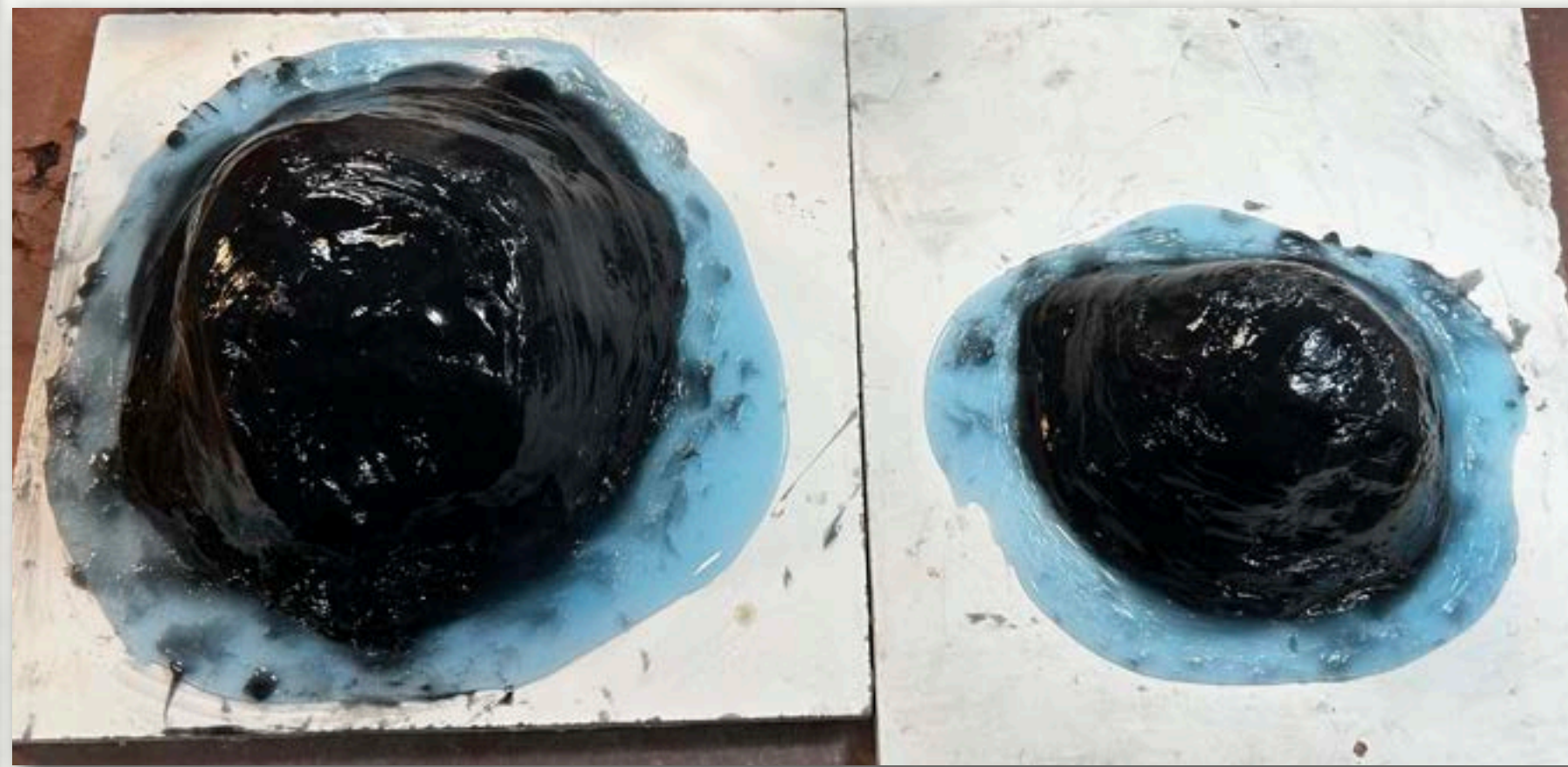
Retainer piece was completely filed down around the brackets so it would only attach at the molars, roof of the mouth, and bottom of the mouth to give it a true “invisible” look for closeups

Another actor was able to fully play with the long exposed wires to insinuate she was applying the braces right then and there





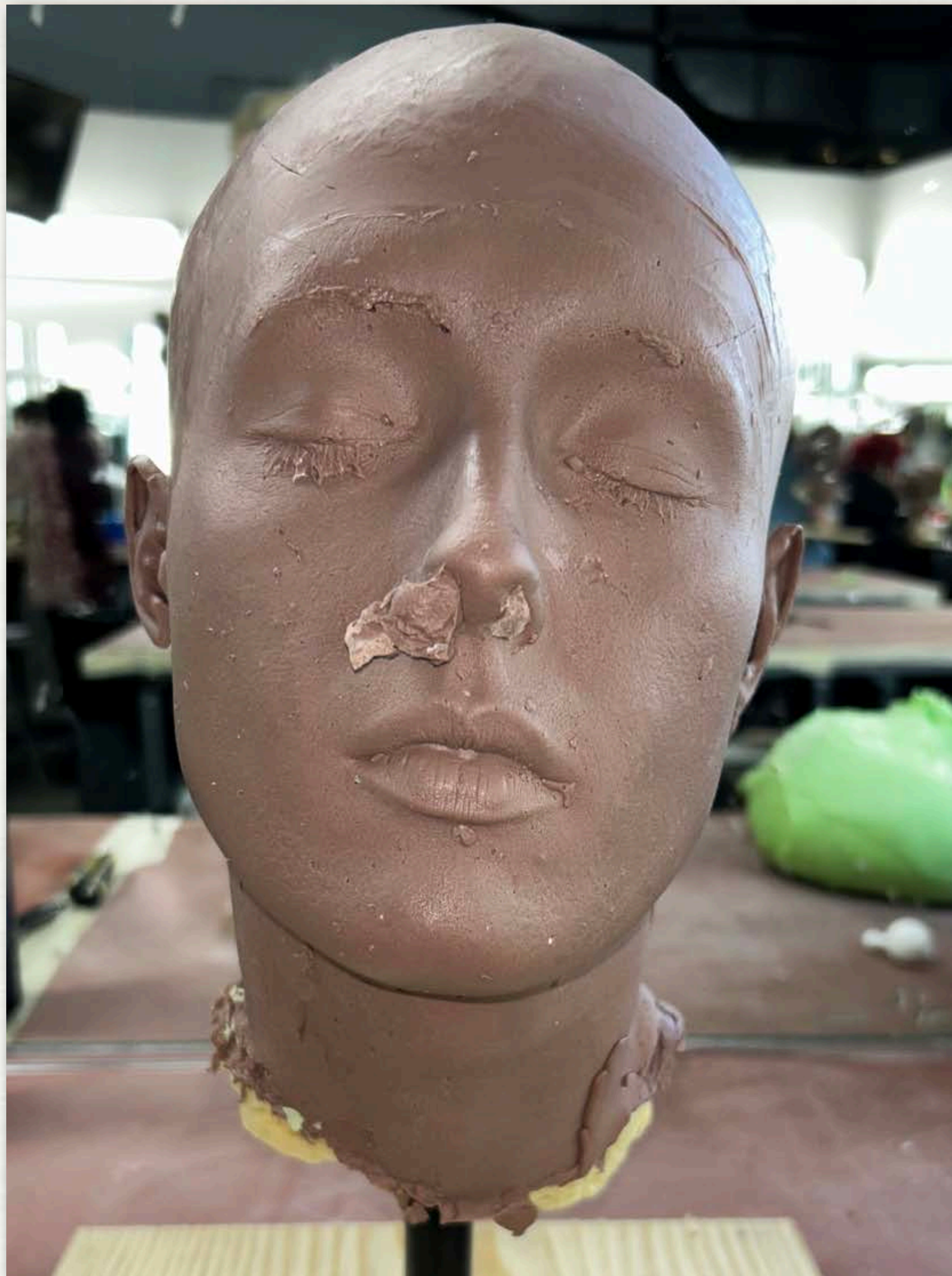
Clay sculpt and flash for silicone prosthetics
 Sculpted with Chavant NSP Medium
 Inspired by the look of "The Mask"
 Sculpt will be ran with silicone with 160% deadener
 Painted with Skin Illustrator alcohol paints



Building the T1630 molds



Sculpted, molded and self applied Pros-Aide Transfers
Painted with Skin Illustrator alcohol paints



Clay fresh out of the life cast

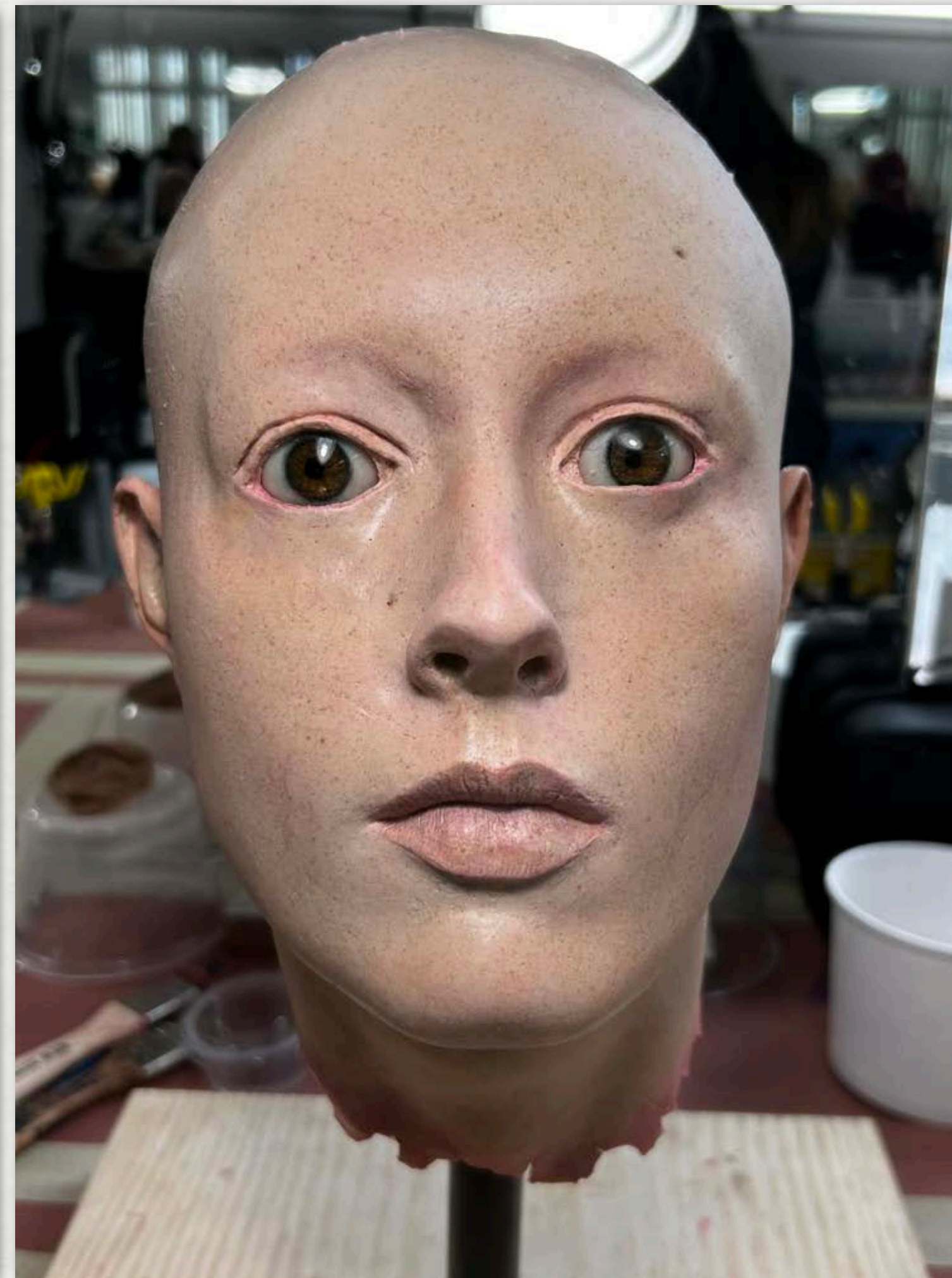


Final day of sculpting

The process of making my own severed head
Sculpted with Chavant NSP Medium



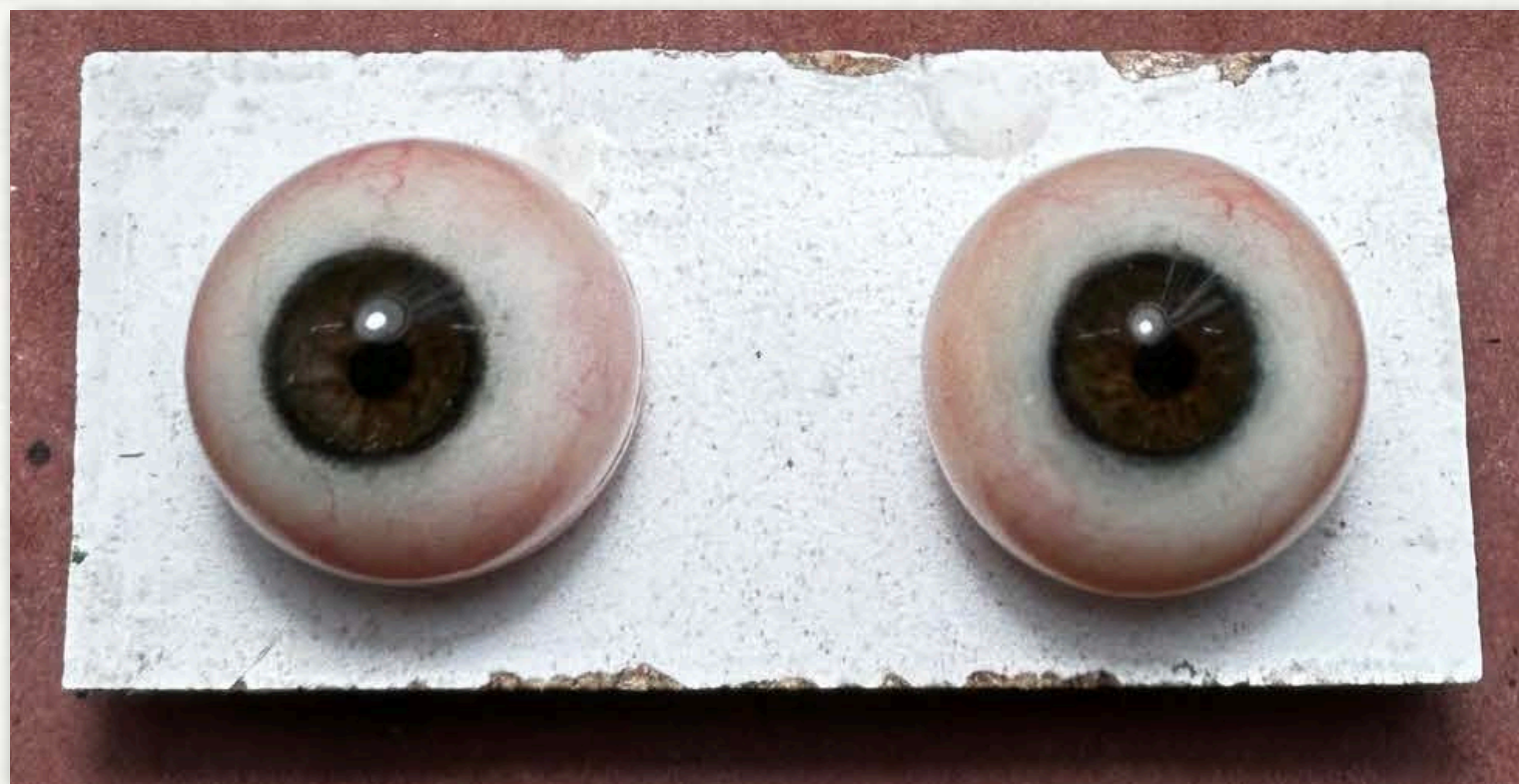
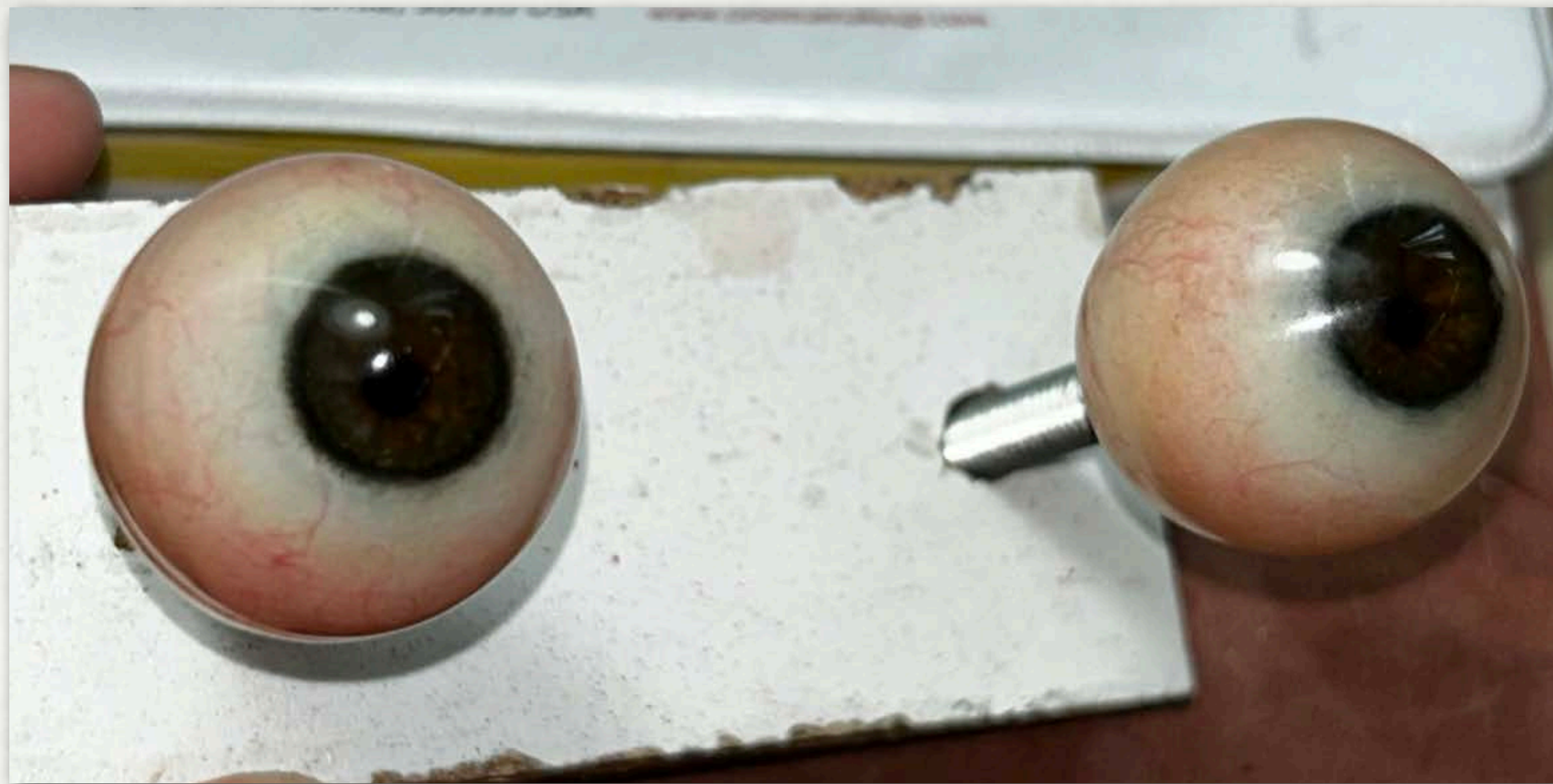
Re-sculpt of the right ear



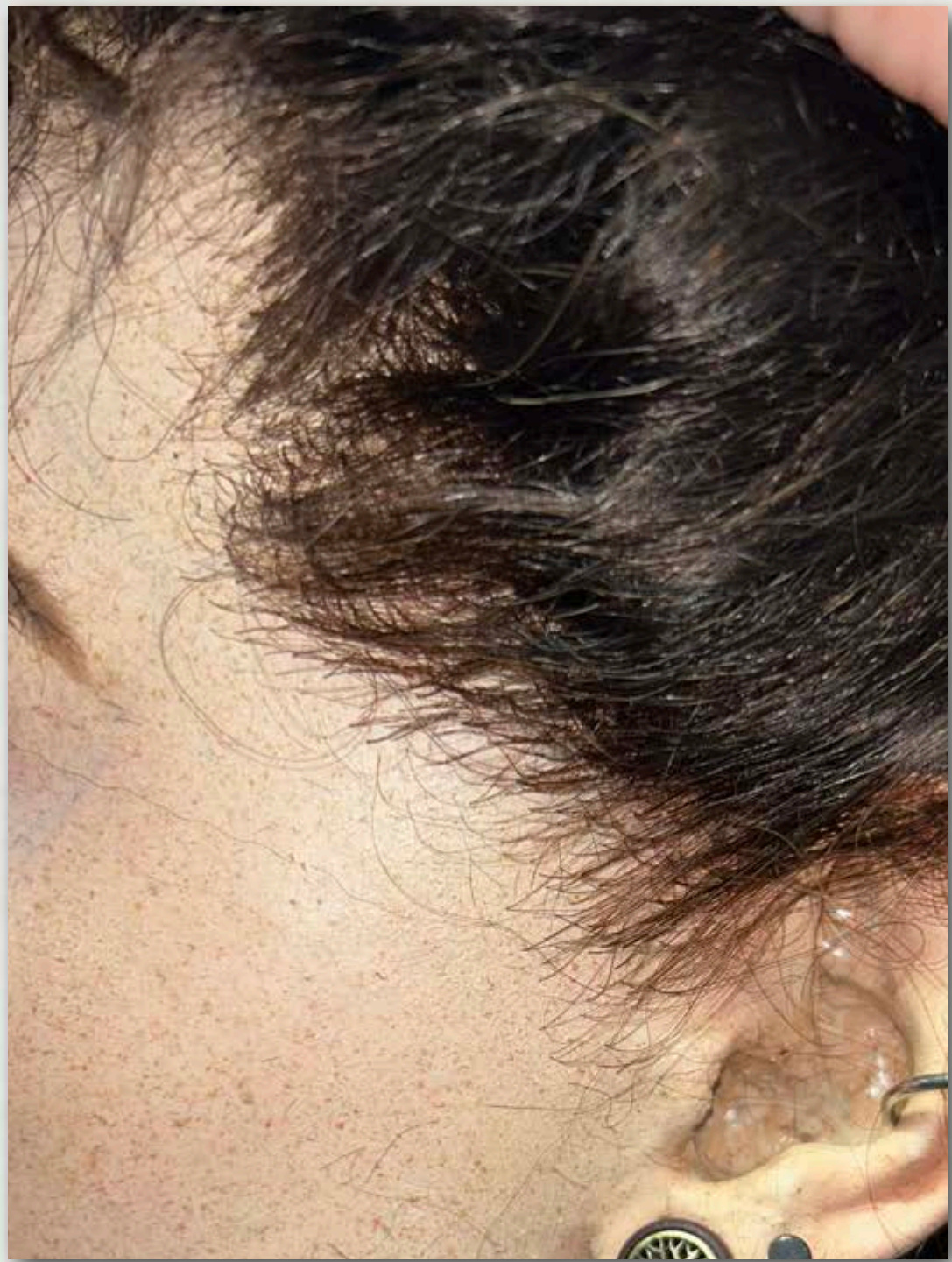
Patched and seamed next to finished paint job
Painted with Shinetzu Caulking base with oil paint pigments added
Used both airbrush, splatter painting, and fine detail work



Silicone neck stump that I cast and painted using a school mold
Painted with Shinetzu Caulking base with oil paint pigments added
Used both airbrush, splatter painting, and fine detail work
Sealed with a gloss Novocs finish and added blood pigmented silicone for better effect



Finished eyeballs
Reference photo attached



Hair punching using human wig hair and mohair
Finished head with live reference!