



BREEZE 16

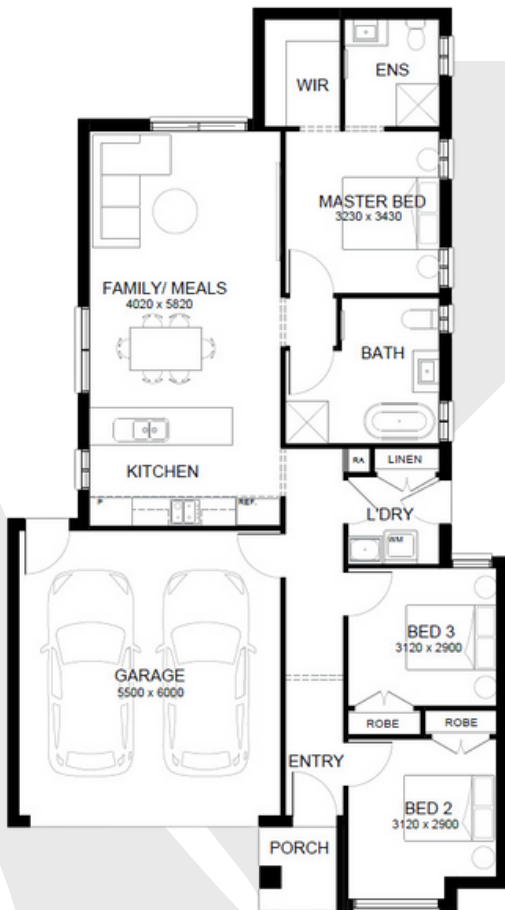
3 

2 

1 

2 

Lot Size: 315 sqm



\$577,410

WHAT'S INCLUDED

- 7 Star Energy Rating**
 - Solar PV System**
 - 2590mm Ceilings**
 - Downlights**
 - Alarm System**
 - Stone Benchtops to Kitchen**
 - Flooring Throughout**
 - Holland Blinds**
 - Colour On Concrete Driveway**
 - Front & Rear Landscaping**
 - Side & Rear Fencing**
 - 12-Month Rent Assist**
- PLUS MUCH MORE!**

Simple Living, Made Easy!

Pricing is current as of 29/09/2024 and is based on developer-supplied guidelines, engineering plans, subdivision and Simple Living Homes standard floorplan and façade. Price does not include stamp duty, government charges or taxes, legal or bank charges. Pricing may vary due to availability of land, increase in land prices or developer/council requirements. Pricing also includes the current Simple Living Homes promotional offer, "The Ultimate Homebuyers Trifecta," and conditions apply. Simple Living Homes reserves the right to terminate this package without notice. For specific details on the inclusions as part of this package please consult a Simple Living Homes New Home Advisor. This house and land package is yet to be constructed. Images are for illustrative purposes only and may include examples of upgrade items or items not supplied.