

# FOR LEASE



1417 EAST JACKSON STREET  
PHOENIX, ARIZONA 85034

## PROPERTY OVERVIEW

- 13,000 Square Feet @ \$0.79, Gross
- 8' x 12' Grade Level Door
- 3 Truckwell Positions with 10' x 10' Doors
- 250 Amp, Single Phase Power
- A-2 Zoning
- 10' - 18' Clear Height (Maximum Stack Height is 12' per Fire Code)
- Evap Cooled Warehouse



### Scott Wiley

Associate Broker  
623.210.3749  
scott@citywidecre.com

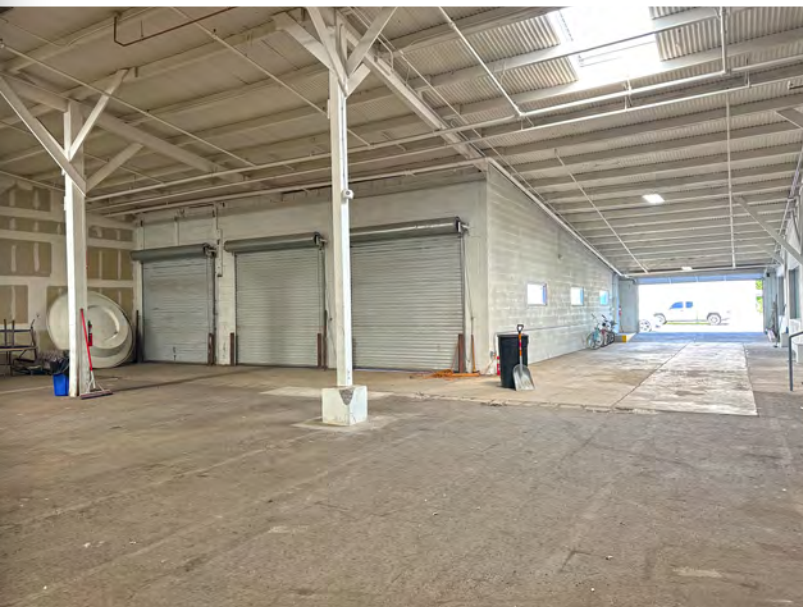
### Tanya Tucker

Sales & Leasing  
520.272.0012  
tanya@citywidecre.com

2122 East Highland Avenue, Suite 225 • Phoenix, Arizona 85016 • 602.313.1000 • citywidecre.com

All information furnished is from sources deemed reliable. No representation is made as to the accuracy thereof and it is submitted subject to errors, omissions, changes, or withdrawal without notice and to any special listings conditions, including the rate and manner of payment of commissions for particular offerings imposed by principals or agreed to by the company, the terms of which are available to interested principals or brokers. All dimensions are approximate. Owner and/or Broker make no representations expressed or implied as to the accuracy of floor plan/site plan dimensions.

# FOR LEASE



## FOR MORE INFORMATION

### **Scott Wiley**

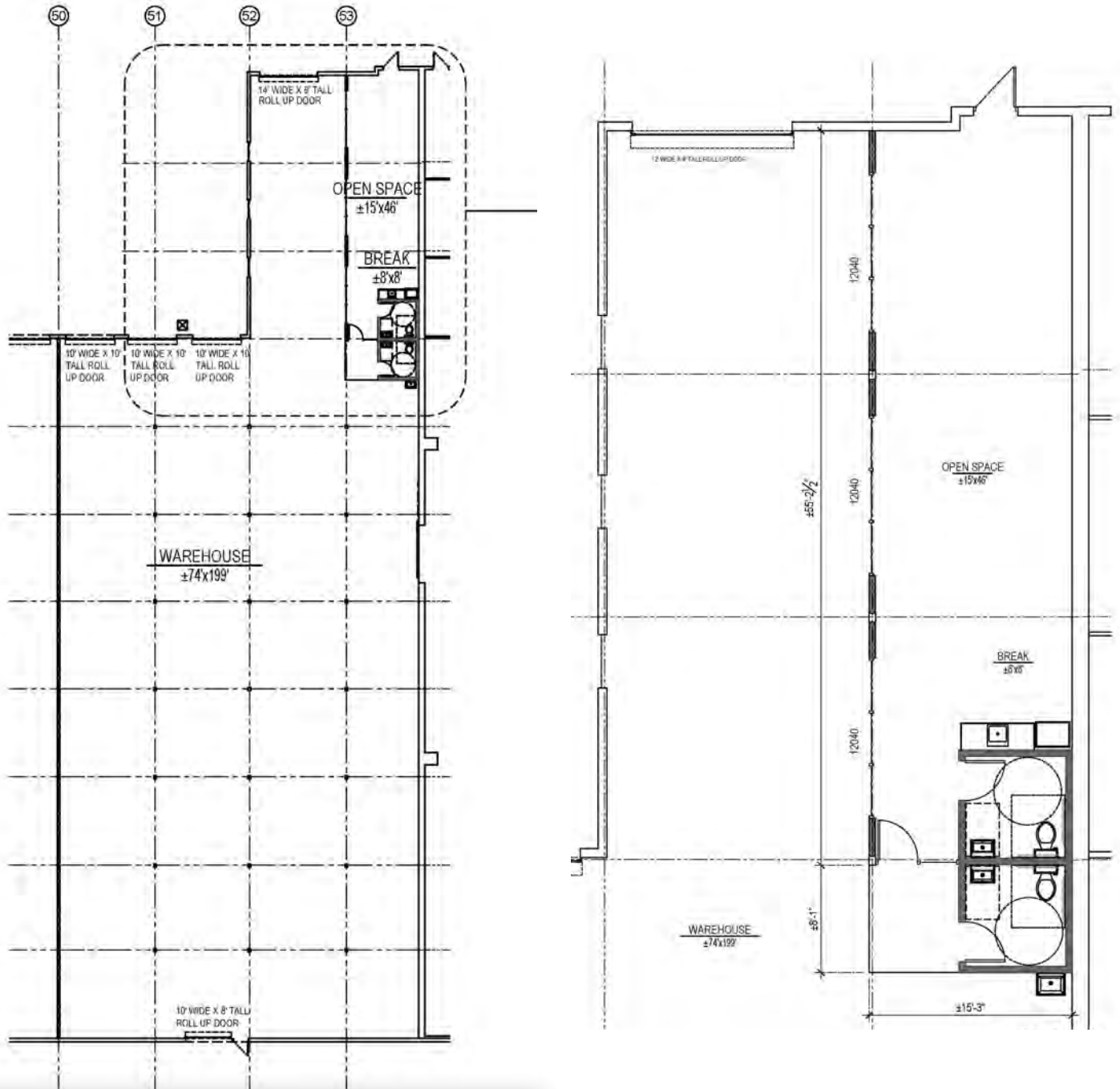
Associate Broker  
623.210.3749  
scott@citywidecre.com

### **Tanya Tucker**

Sales & Leasing  
520.272.0012  
tanya@citywidecre.com

2122 East Highland Avenue, Suite 225 • Phoenix, Arizona 85016 • 602.313.1000 • citywidecre.com

# FOR LEASE



## FOR MORE INFORMATION

### Scott Wiley

Associate Broker  
623.210.3749  
scott@citywidecre.com

### Tanya Tucker

Sales & Leasing  
520.272.0012  
tanya@citywidecre.com

2122 East Highland Avenue, Suite 225 • Phoenix, Arizona 85016 • 602.313.1000 • citywidecre.com