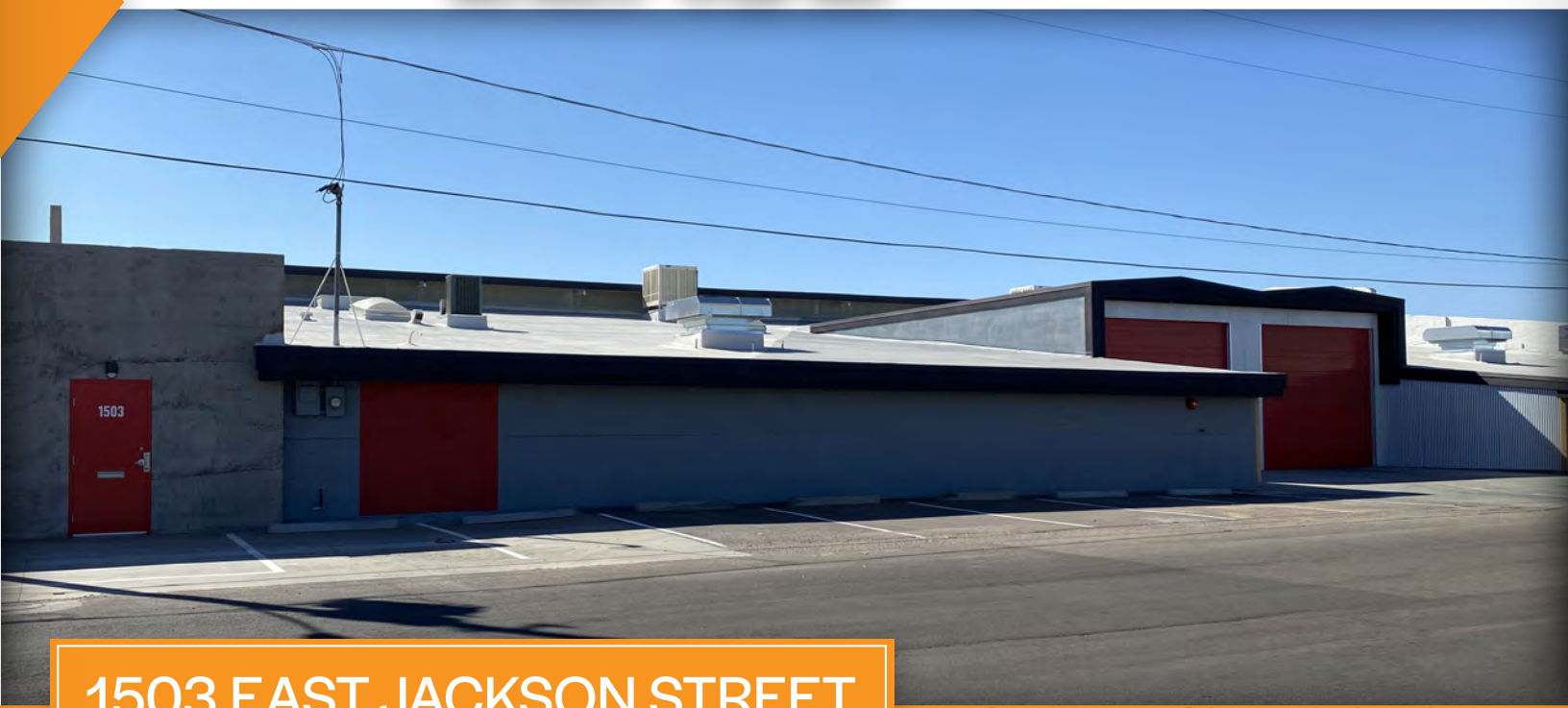


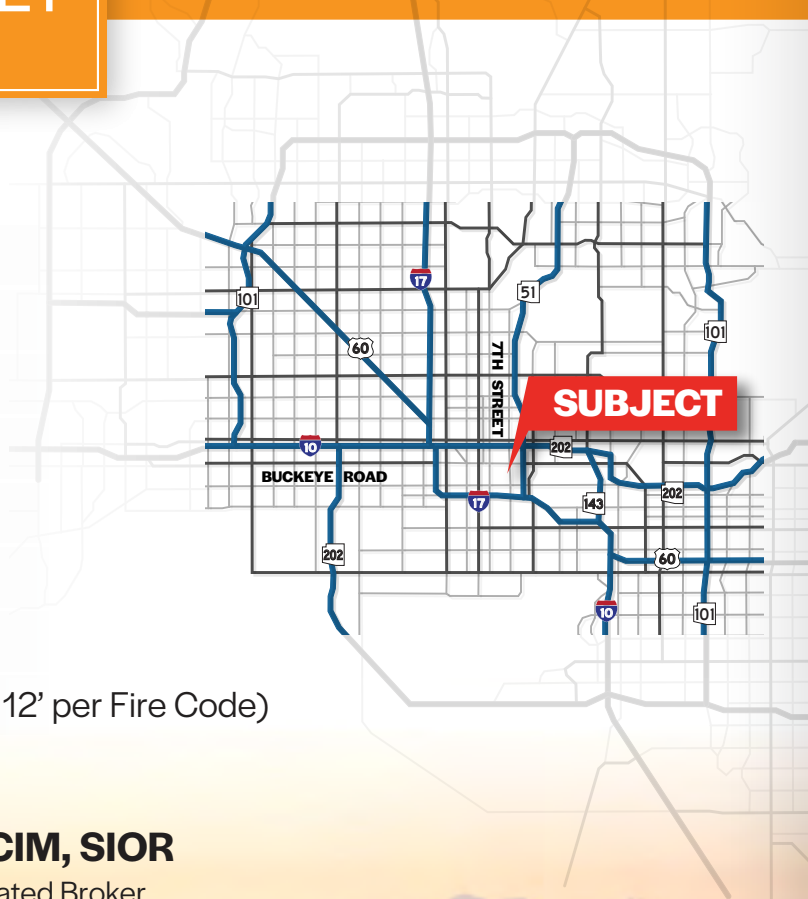
FOR LEASE



1503 EAST JACKSON STREET
PHOENIX, ARIZONA 85034

PROPERTY OVERVIEW

- 19,883 Square Feet @ \$0.85 Modified Gross
- 12' x 8' & 16' x 14' Roll-up Doors
- Grade Level and Shared Truckwell Loading
- A-2 Zoning
- 200 Amp, 120-240 Volt, Single Phase Power
- Evap Cooled Warehouse
- Fire Sprinklered
- 10' - 18' Clear Height (Maximum Stack Height is 12' per Fire Code)



Nick DePaul

Vice President
480.414.3818
nick@citywidecre.com

Todd Hamilton, CCIM, SIOR

Managing Partner/Designated Broker
602.909.8759
todd@citywidecre.com

2122 East Highland Avenue, Suite 225
Phoenix, Arizona 85016
602.313.1000 • citywidecre.com

All information furnished is from sources deemed reliable. No representation is made as to the accuracy thereof and it is submitted subject to errors, omissions, changes, or withdrawal without notice and to any special listings conditions, including the rate and manner of payment of commissions for particular offerings imposed by principals or agreed to by the company, the terms of which are available to interested principals or brokers. All dimensions are approximate. Owner and/or Broker make no representations expressed or implied as to the accuracy of floor plan/site plan dimensions.

citywide
COMMERCIAL REAL ESTATE

FOR LEASE



FOR MORE INFORMATION

Nick DePaul

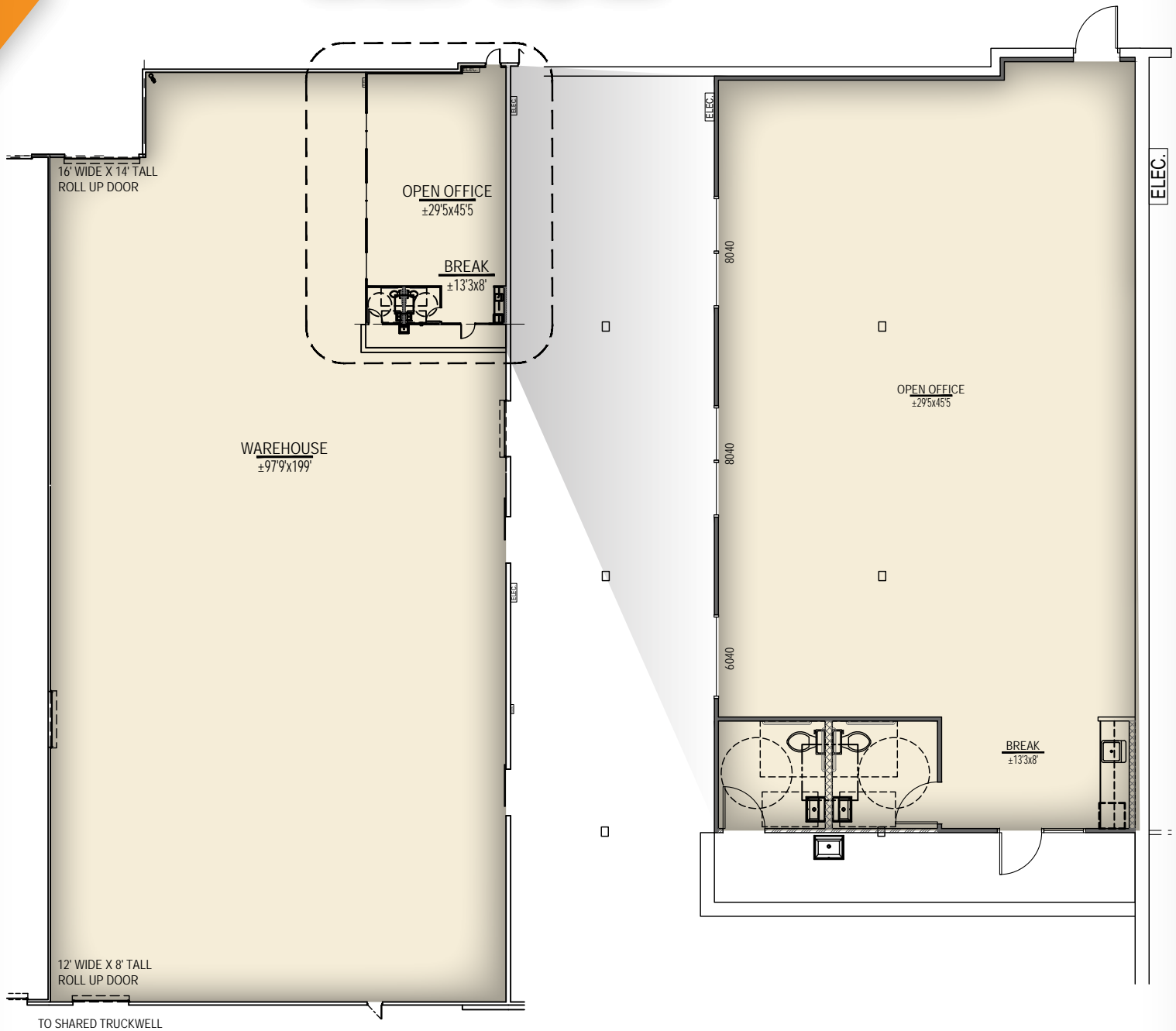
Vice President
480.414.3818
nick@citywidecre.com

Todd Hamilton, CCIM, SIOR

Managing Partner/Designated Broker
602.909.8759
todd@citywidecre.com

2122 East Highland Avenue, Suite 225
Phoenix, Arizona 85016
602.313.1000 • citywidecre.com

FOR LEASE



FOR MORE INFORMATION

Nick DePaul

Vice President
480.414.3818
nick@citywidecre.com

Todd Hamilton, CCIM, SIOR

Managing Partner/Designated Broker
602.909.8759
todd@citywidecre.com

2122 East Highland Avenue, Suite 225
Phoenix, Arizona 85016
602.313.1000 • citywidecre.com