



## 1837 EAST INDIAN SCHOOL ROAD

PHOENIX, ARIZONA 85016

\$750,000 Sales Price

±5,000 Square Feet

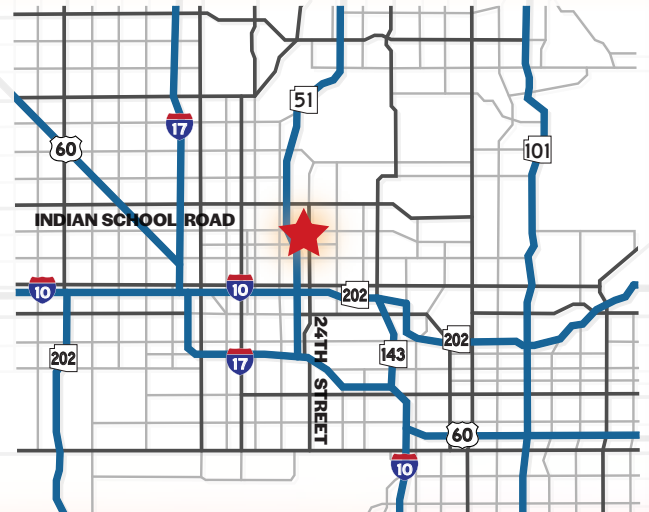
C-2 Zoning, City of Phoenix

10' x 10' Garage Door with Electric Opener

2 Front Parking Spaces

Monument Signage Included

East Portion Full Build-out, West Portion Shell Space



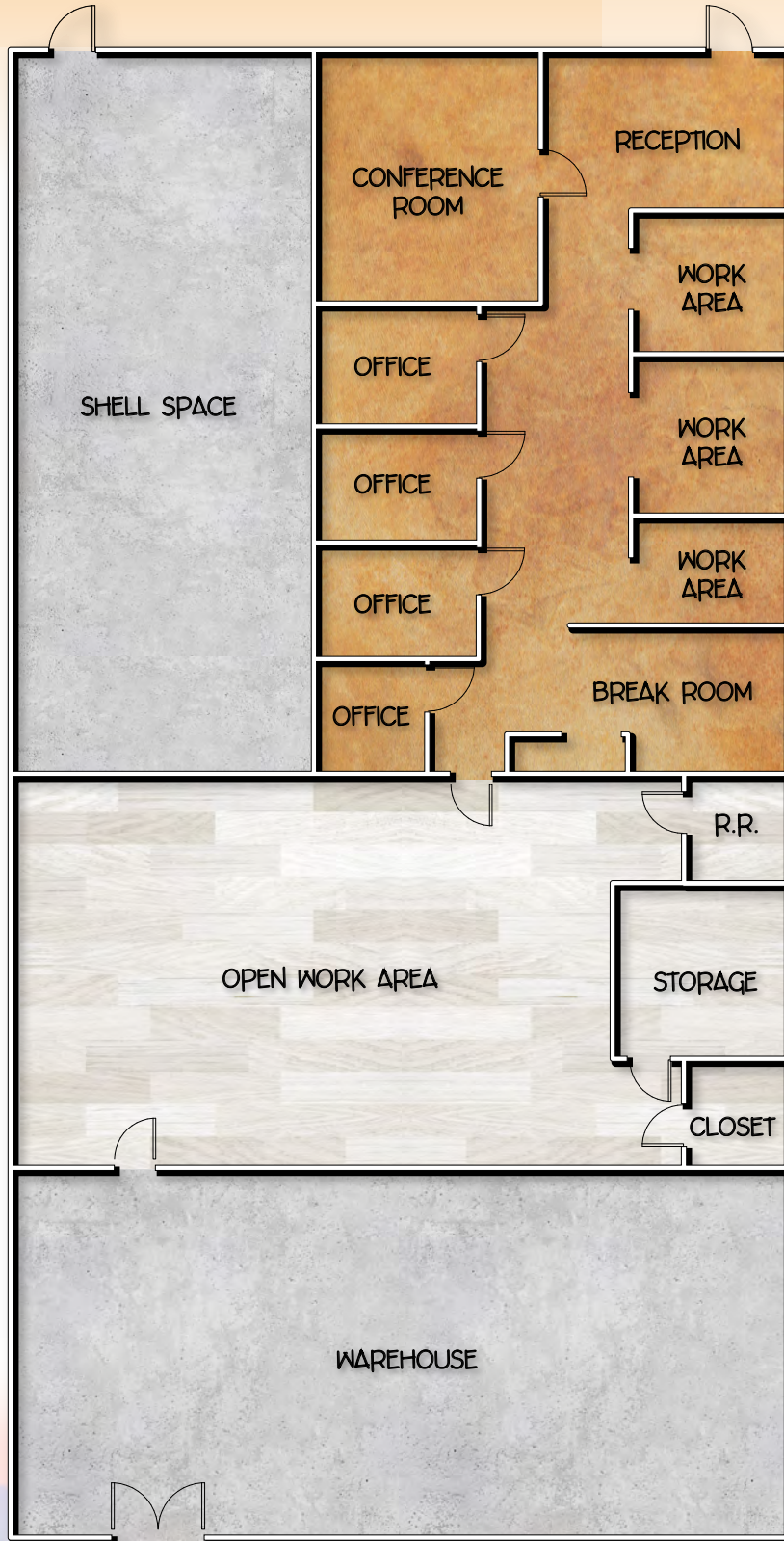
### Adam Shteir

Partner  
602.769.0521  
adam@citywidecre.com

### Jack Scanlan

Associate Broker  
602.672.4546  
jack@citywidecre.com

2122 East Highland Avenue, Suite 225 • Phoenix, Arizona 85016 • 602.313.1000 • citywidecre.com





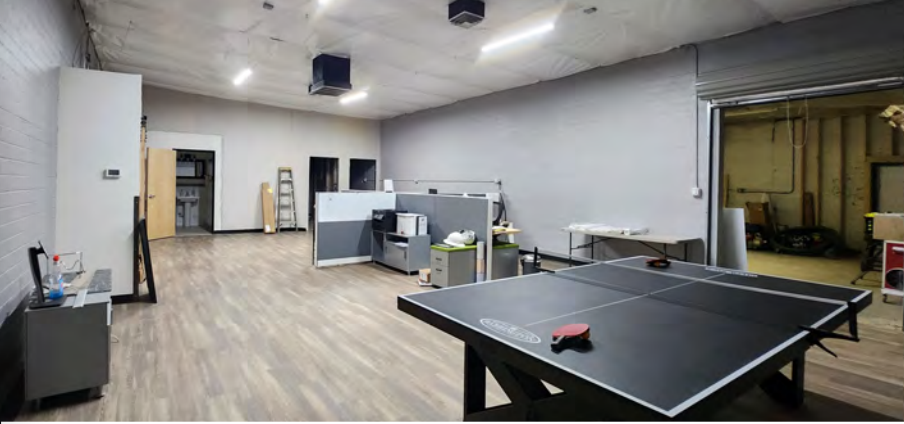
## Adam Shteir

Partner  
602.769.0521  
adam@citywidecre.com

2122 East Highland Avenue, Suite 225 • Phoenix, Arizona 85016 • 602.313.1000 • citywidecre.com

## Jack Scanlan

Associate Broker  
602.672.4546  
jack@citywidecre.com



## Adam Shteir

Partner  
602.769.0521  
adam@citywidecre.com

## Jack Scanlan

Associate Broker  
602.672.4546  
jack@citywidecre.com

2122 East Highland Avenue, Suite 225 • Phoenix, Arizona 85016 • 602.313.1000 • citywidecre.com