

# FOR SUBLEASE

2146 WEST SHERMAN STREET  
PHOENIX, ARIZONA 85009



## 4,200 SQUARE FEET \$1.00 PER SQUARE FOOT, GROSS

12' Clear Height

Two 10' x 10' Overhead Doors

Evap Cooled Warehouse

400 Amps, 3 Phase Power

Fenced Yard

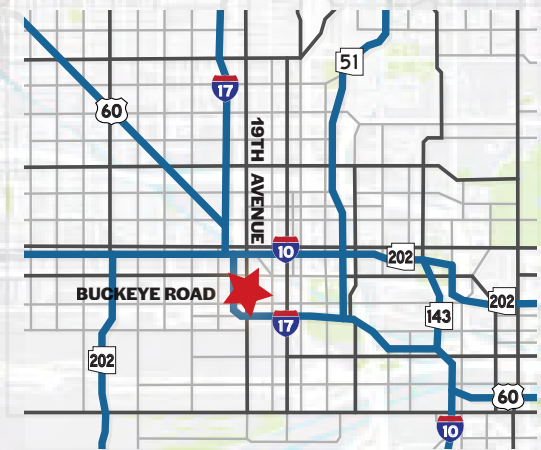
Master Lease Expires 7/31/2025

### Chad Nepl

Senior Vice President

602.695.4909

cnepl@citywidecre.com



**citywide**  
COMMERCIAL REAL ESTATE

2122 EAST HIGHLAND AVENUE, SUITE 225 • PHOENIX, ARIZONA 85016 • 602.313.1000 • CITYWIDECRE.COM

All information furnished is from sources deemed reliable. No representation is made as to the accuracy thereof and it is submitted subject to errors, omissions, changes, or withdrawal without notice and to any special listings conditions, including the rate and manner of payment of commissions for particular offerings imposed by principals or agreed to by the company, the terms of which are available to interested principals or brokers. All dimensions are approximate. Owner and/or Broker make no representations expressed or implied as to the accuracy of floor plan/site plan dimensions.



# FOR SUBLEASE

2146 WEST SHERMAN STREET  
PHOENIX, ARIZONA 85009



## Chad Neppi

Senior Vice President

602.695.4909

[cneppl@citywidecre.com](mailto:cneppl@citywidecre.com)

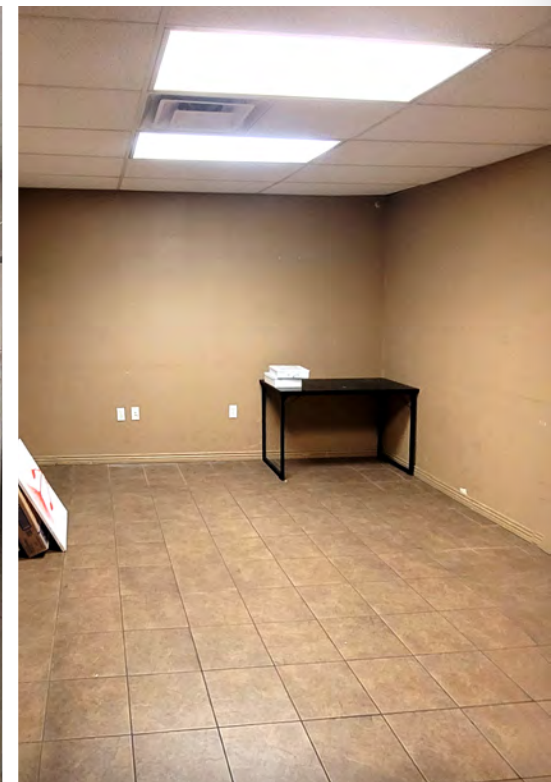
2122 EAST HIGHLAND AVENUE, SUITE 225 • PHOENIX, ARIZONA 85016 • 602.313.1000 • CITYWIDECRE.COM

citywide  
COMMERCIAL REAL ESTATE



# FOR SUBLEASE

2146 WEST SHERMAN STREET  
PHOENIX, ARIZONA 85009



**Chad Neppi**

Senior Vice President

602.695.4909

[cneppi@citywidecre.com](mailto:cneppi@citywidecre.com)

2122 EAST HIGHLAND AVENUE, SUITE 225 • PHOENIX, ARIZONA 85016 • 602.313.1000 • CITYWIDECRE.COM

**citywide**  
COMMERCIAL REAL ESTATE