

FOR LEASE



2701 EAST OSBORN ROAD
PHOENIX, ARIZONA 85016

PROPERTY OVERVIEW

- Suite 100 - 3,046 Square Feet
- \$18 per Square Foot, Full Service
- Monument Signage Available
- Reception, 3 Offices, Restrooms, Break Room, & Conference Room



Bo Sederstrom
Senior Vice President
602.330.1917
bo@citywidecre.com

2122 East Highland Avenue, Suite 225
Phoenix, Arizona 85016
602.313.1000 • citywidecre.com

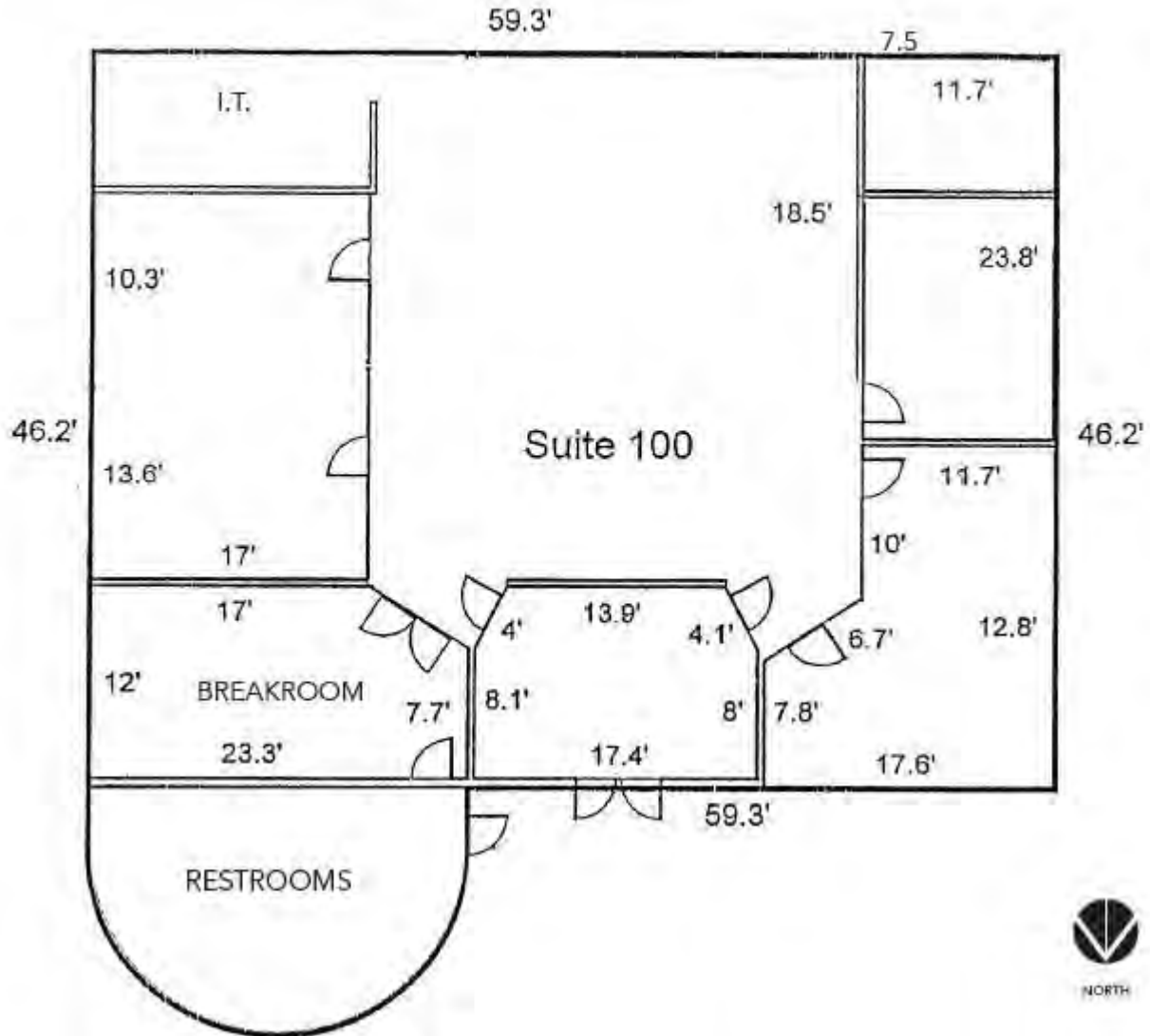
All information furnished is from sources deemed reliable. No representation is made as to the accuracy thereof and it is submitted subject to errors, omissions, changes, or withdrawal without notice and to any special listings conditions, including the rate and manner of payment of commissions for particular offerings imposed by principals or agreed to by the company, the terms of which are available to interested principals or brokers. All dimensions are approximate. Owner and/or Broker make no representations expressed or implied as to the accuracy of floor plan/site plan dimensions.

citywide
COMMERCIAL REAL ESTATE

FOR LEASE

SUITE 100

±3,046 SF



FOR MORE INFORMATION

Bo Sederstrom

Senior Vice President

602.330.1917

bo@citywidecre.com

2122 East Highland Avenue, Suite 225

Phoenix, Arizona 85016

602.313.1000 • citywidecre.com