

# FOR LEASE



**2910 NORTH 35TH AVENUE**

**PHOENIX, ARIZONA 85017**



## AVAILABILITY OVERVIEW:

AVAILABLE:	SUITES 4 & 5 - 4,467 SF
LEASE RATE:	\$1.00/MG
LOADING:	2 - 10' x 12' GARAGE DOOR
POWER:	3 PHASE
COOLING:	EVAP COOLED
ZONING:	INDUSTRIAL
FEATURES:	RECEPTION, 2 OFFICES, 2 RESTROOMS, OPEN AREA, WAREHOUSE

**ADAM SHTEIR**  
PARTNER

602.769.0521  
adam@citywidecre.com

**JACK SCANLAN**  
ASSOCIATE BROKER

602.672.4546  
jack@citywidecre.com

**TODD HAMILTON**  
MANAGING PARTNER/  
DESIGNATED BROKER

602.909.8759  
todd@citywidecre.com

**CITYWIDE COMMERCIAL REAL ESTATE**

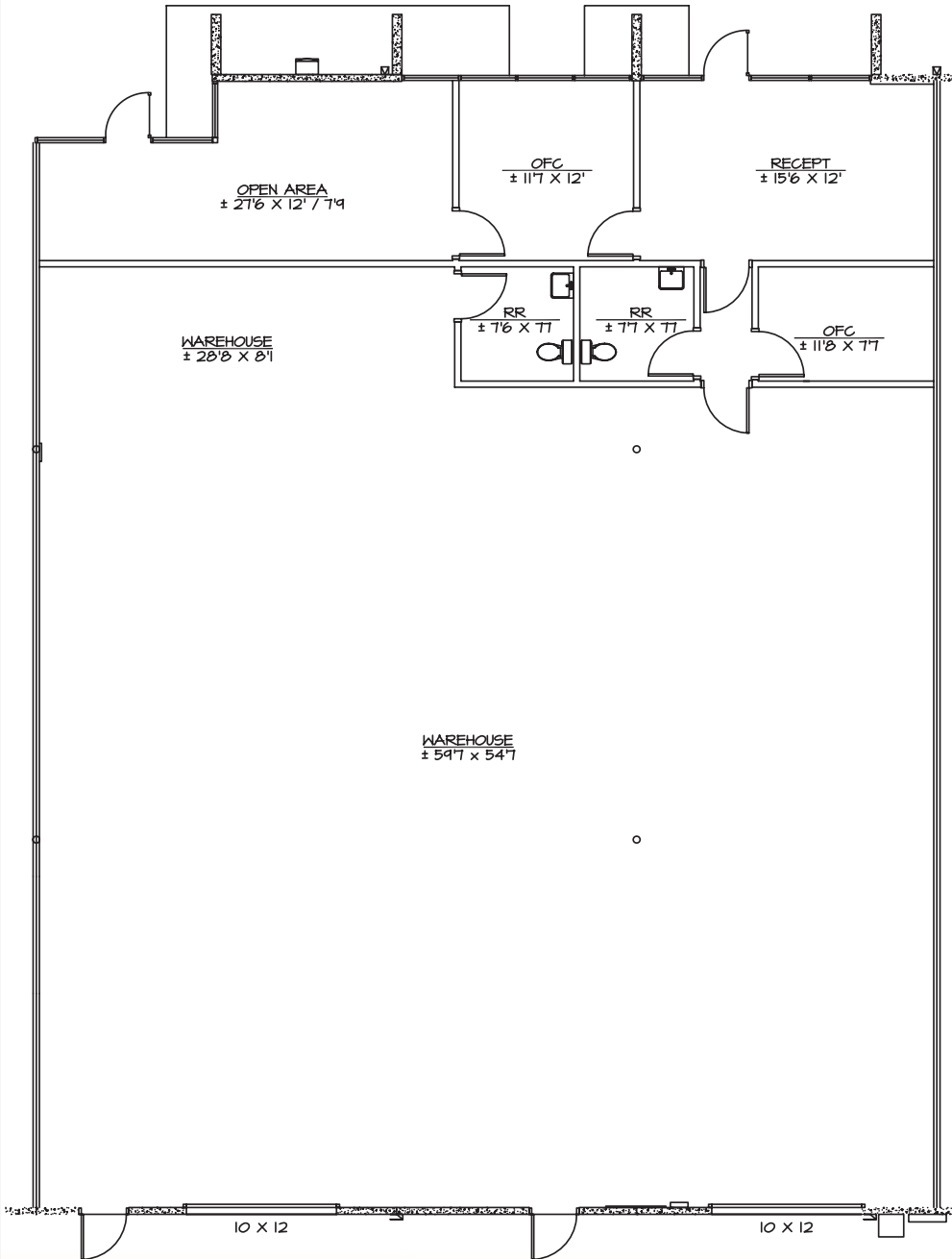
2122 EAST HIGHLAND AVENUE, SUITE 225 • PHOENIX, ARIZONA 85016 • CITYWIDECRE.COM

\*All information furnished is from sources deemed reliable. No representation is made as to the accuracy thereof and it is submitted subject to errors, omissions, changes, or withdrawal without notice and to any special listings conditions, including the rate and manner of payment of commissions for particular offerings imposed by principals or agreed to by the company, the terms of which are available to interested principals or brokers. All dimensions are approximate. Owner and/or Broker make no representations expressed or implied as to the accuracy of floor plan/site plan dimensions.

**citywide**  
COMMERCIAL REAL ESTATE

# FOR LEASE

2910 NORTH 35TH AVENUE  
PHOENIX, ARIZONA 85017



**CITYWIDE COMMERCIAL REAL ESTATE**  
2122 EAST HIGHLAND AVENUE, SUITE 225 • PHOENIX, ARIZONA 85016

**ADAM SHTEIR**

PARTNER  
602.769.0521  
adam@citywidecre.com

**JACK SCANLAN**

ASSOCIATE BROKER  
602.672.4546  
jack@citywidecre.com

\*All information furnished is from sources deemed reliable. No representation is made as to the accuracy thereof and it is submitted subject to errors, omissions, changes, or withdrawal without notice and to any special listings conditions, including the rate and manner of payment of commissions for particular offerings imposed by principals or agreed to by the company, the terms of which are available to interested principals or brokers. All dimensions are approximate. Owner and/or Broker make no representations expressed or implied as to the accuracy of floor plan/site plan dimensions.

**citywide**  
COMMERCIAL REAL ESTATE