

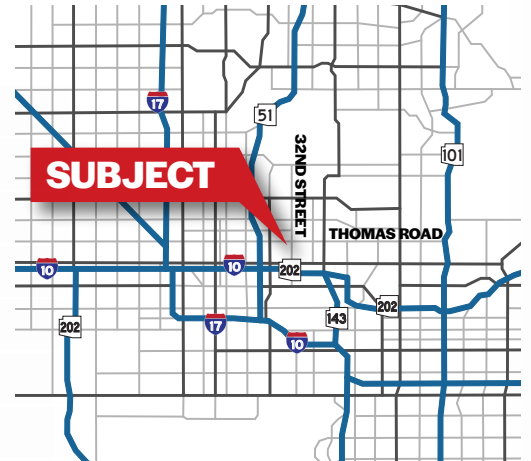
# FOR SALE



**3001 EAST THOMAS ROAD**  
PHOENIX, ARIZONA 85016

## PROPERTY OVERVIEW

- \$1,800,000 Sales Price
- 9,141 Square Foot Building
- 0.55 Acres, 23,766 Square Foot Site
- Freestanding Retail/Office Building
- Investment Opportunity/Owner User
- Thomas Road Frontage
- C-2 Zoning, City of Phoenix
- Highly Walkable, Proximity to Public Transportation
- Suitable for High Demand Services such as Behavior Health Agencies
- Long Term Lease in Place with Laundromat



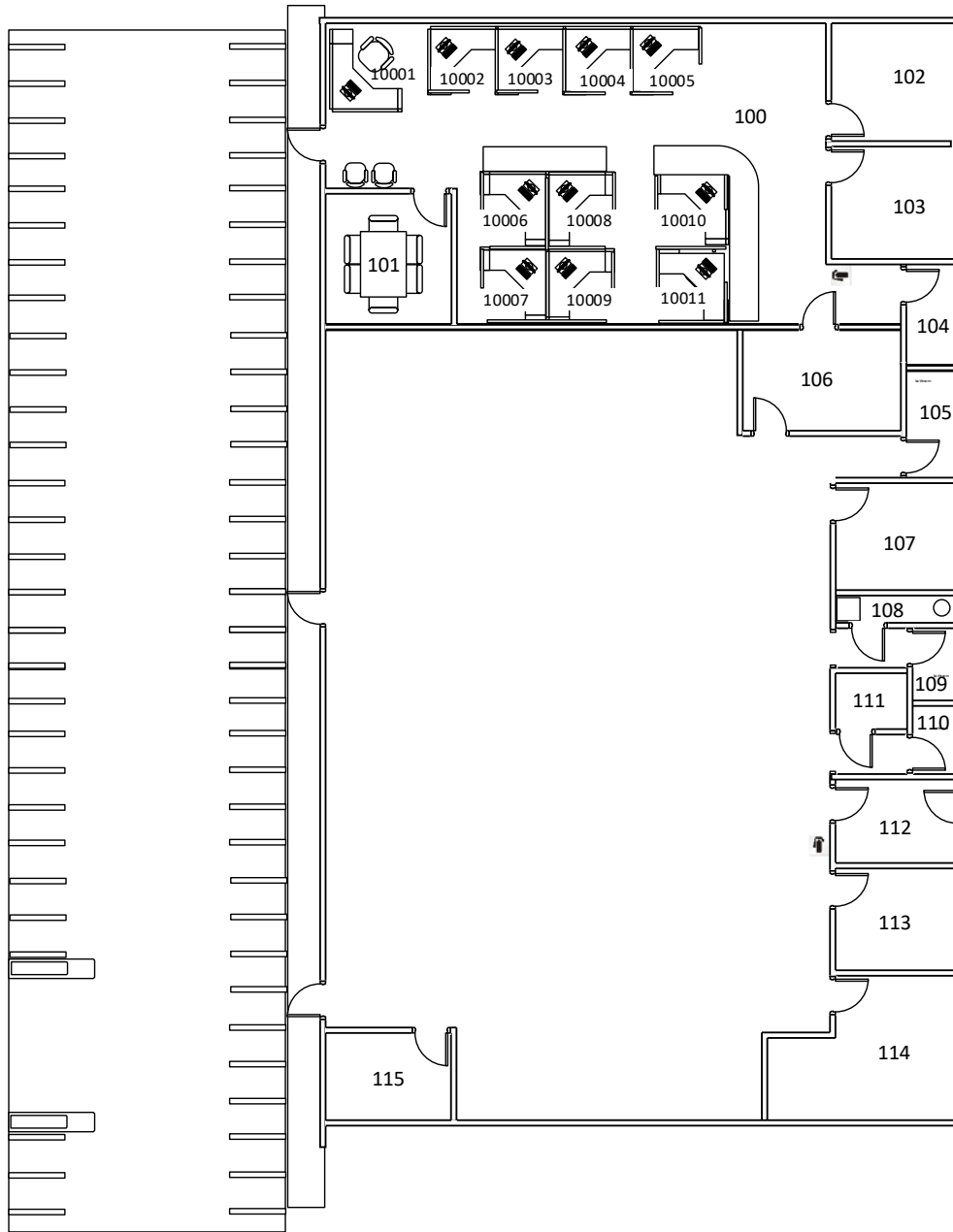
**Bo Sederstrom**  
Senior Vice President  
602.330.1917  
bo@citywidecre.com

2122 East Highland Avenue, Suite 225  
Phoenix, Arizona 85016  
602.313.1000 • citywidecre.com

All information furnished is from sources deemed reliable. No representation is made as to the accuracy thereof and it is submitted subject to errors, omissions, changes, or withdrawal without notice and to any special listings conditions, including the rate and manner of payment of commissions for particular offerings imposed by principals or agreed to by the company, the terms of which are available to interested principals or brokers. All dimensions are approximate. Owner and/or Broker make no representations expressed or implied as to the accuracy of floor plan/site plan dimensions.

**citywide**  
COMMERCIAL REAL ESTATE

# FOR SALE



## FOR MORE INFORMATION

**Bo Sederstrom**  
Senior Vice President  
602.330.1917  
bo@citywidecre.com

2122 East Highland Avenue, Suite 225  
Phoenix, Arizona 85016  
602.313.1000 • citywidecre.com