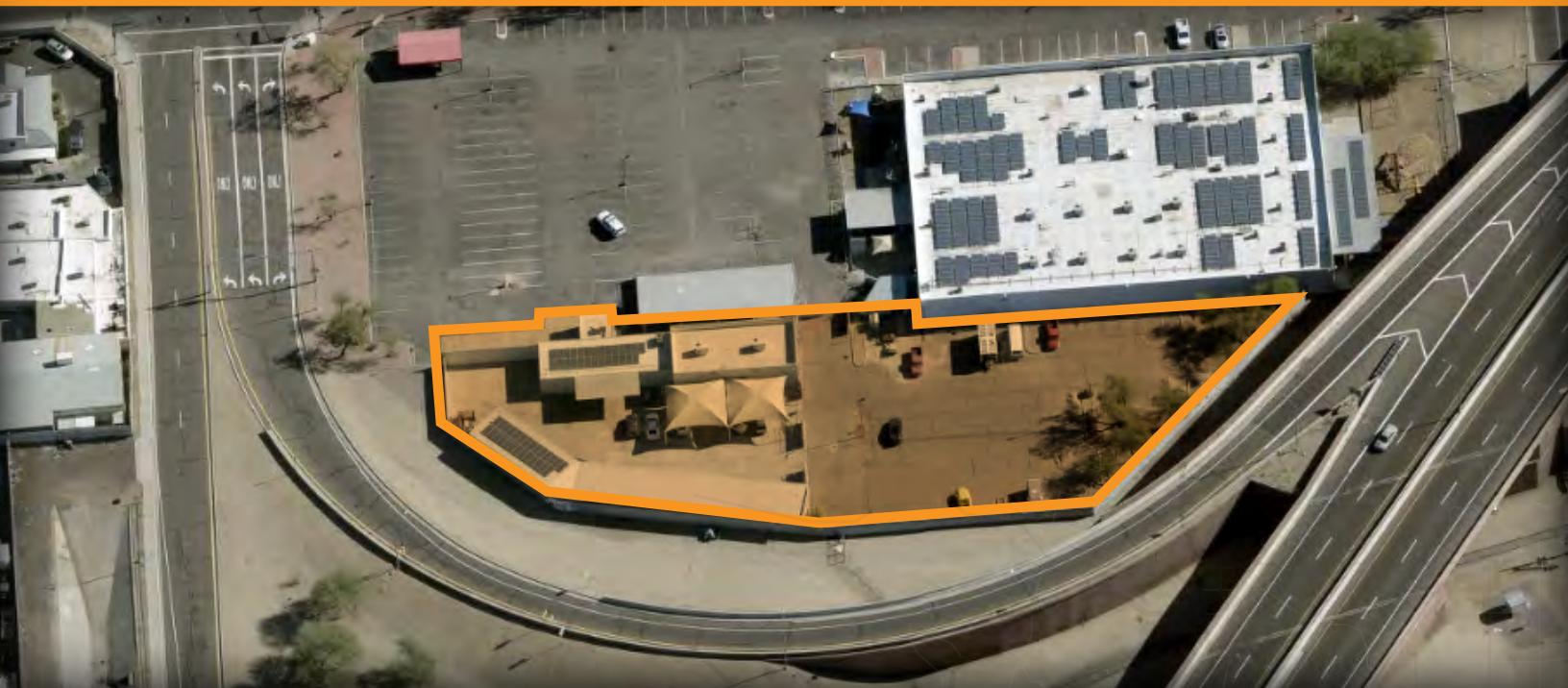


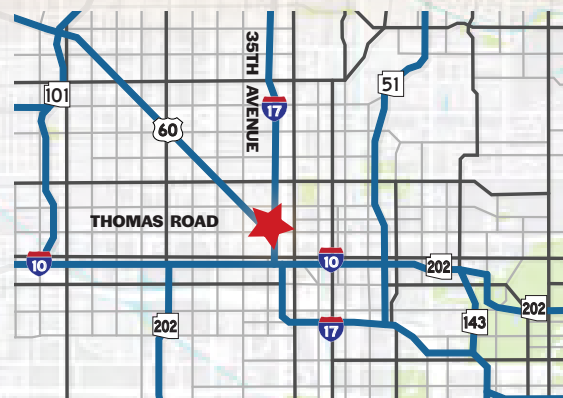
FOR LEASE

3010 NORTH 27TH AVENUE
PHOENIX, ARIZONA 85017



\$7,000 PER MONTH, MODIFIED GROSS

1,537 Square Foot Storage Warehouse
1,818 Square Foot Office
±41,000 Square Foot Site
Large Gated & Paved Yard
A-1 Zoning



Bo Sederstrom
Senior Vice President
602.330.1917
bo@citywidecre.com

Chad Kirkorsky, SIOR
Partner
480.330.2824
chad@citywidecre.com

Nick DePaul
Vice President
480.414.3818
nick@citywidecre.com

Preston Brimhall
Sales & Leasing
602.619.9350
preston@citywidecre.com

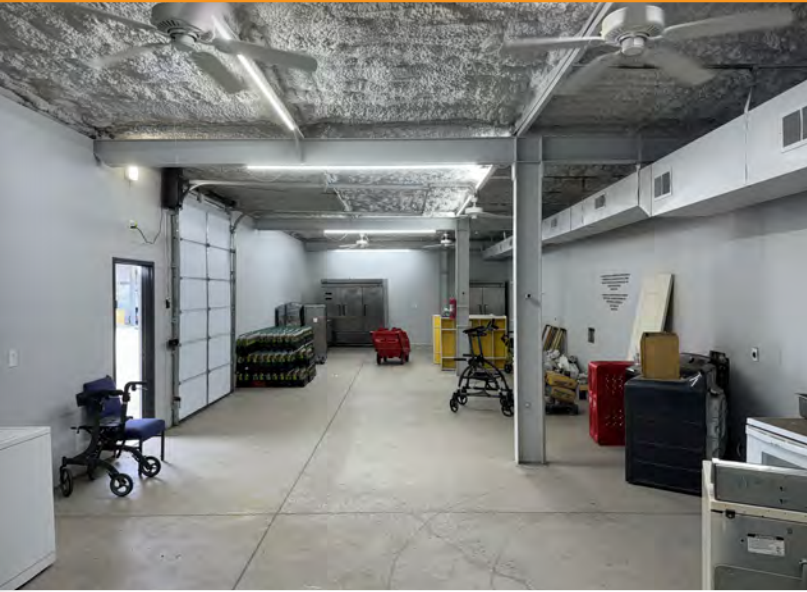


2122 EAST HIGHLAND AVENUE, SUITE 225 • PHOENIX, ARIZONA 85016 • 602.313.1000 • CITYWIDECRE.COM

All information furnished is from sources deemed reliable. No representation is made as to the accuracy thereof and it is submitted subject to errors, omissions, changes, or withdrawal without notice and to any special listings conditions, including the rate and manner of payment of commissions for particular offerings imposed by principals or agreed to by the company, the terms of which are available to interested principals or brokers. All dimensions are approximate. Owner and/or Broker make no representations expressed or implied as to the accuracy of floor plan/site plan dimensions.

FOR LEASE

3010 NORTH 27TH AVENUE
PHOENIX, ARIZONA 85017



Bo Sederstrom

Senior Vice President
602.330.1917
bo@citywidecre.com

Chad Kirkorsky, SIOR

Partner
480.330.2824
chad@citywidecre.com

Nick DePaul

Vice President
480.414.3818
nick@citywidecre.com

Preston Brimhall

Sales & Leasing
602.619.9350
preston@citywidecre.com

2122 EAST HIGHLAND AVENUE, SUITE 225 • PHOENIX, ARIZONA 85016 • 602.313.1000 • CITYWIDECRE.COM

citywide
COMMERCIAL REAL ESTATE