

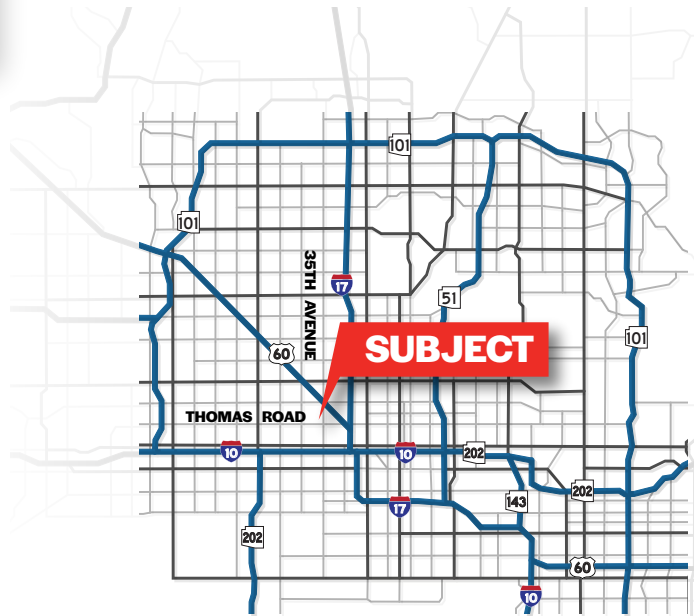
# FOR LEASE



**3602 WEST THOMAS ROAD**  
PHOENIX, ARIZONA 85019

## PROPERTY OVERVIEW

- Suites 10 & 11 - 4,584 Square Feet (40% Office)
- 3 - 10' x 12' Garage Door Loading
- Flexible Industrial Park Zoning
- 100% Evap Cooled Warehouse
- Fire Sprinklered
- Thomas Road Frontage
- Immediate Access to Grand Avenue



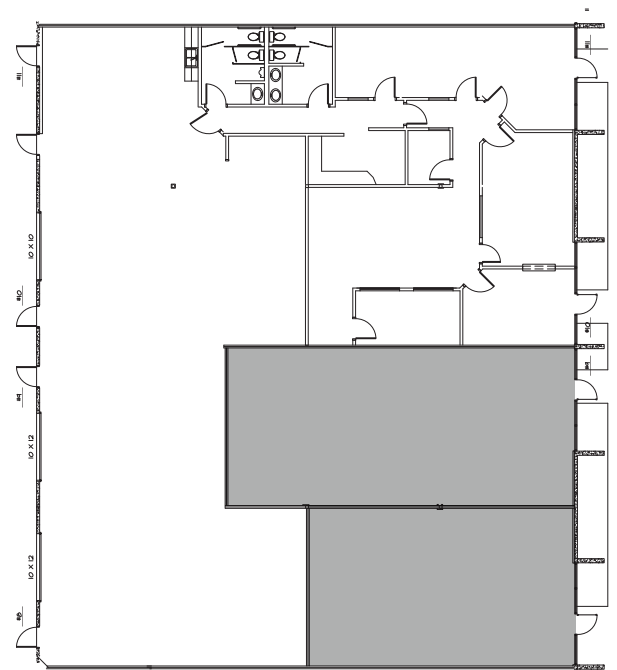
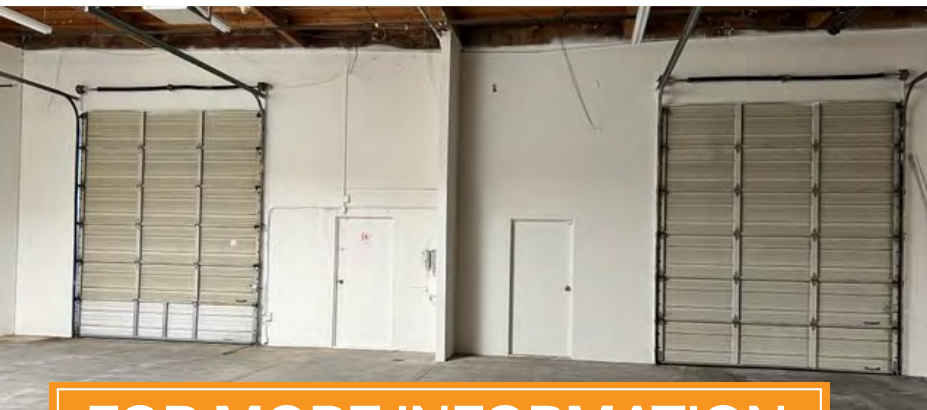
**Adam Shteir**  
Partner  
602.769.0521  
adam@citywidecre.com

**Jack Scanlan**  
Associate Broker  
602.672.4546  
jack@citywidecre.com

2122 East Highland Avenue, Suite 225  
Phoenix, Arizona 85016  
602.313.1000 • citywidecre.com

All information furnished is from sources deemed reliable. No representation is made as to the accuracy thereof and it is submitted subject to errors, omissions, changes, or withdrawal without notice and to any special listings conditions, including the rate and manner of payment of commissions for particular offerings imposed by principals or agreed to by the company, the terms of which are available to interested principals or brokers. All dimensions are approximate. Owner and/or Broker make no representations expressed or implied as to the accuracy of floor plan/site plan dimensions.

# FOR LEASE



## FOR MORE INFORMATION

### Adam Shteir

Partner

602.769.0521

adam@citywidecre.com

### Jack Scanlan

Associate Broker

602.672.4546

jack@citywidecre.com

2122 East Highland Avenue, Suite 225

Phoenix, Arizona 85016

602.313.1000 • citywidecre.com