

FOR LEASE



3616 WEST THOMAS ROAD
PHOENIX, ARIZONA 85019

PROPERTY OVERVIEW

- Suites 7 & 8 - 6,440 Square Feet @ \$1.00 per Square Foot
- 3 - 10' x 12' Garage Door Loading
- Flexible Industrial Park Zoning
- 100% Evap Cooled Warehouse
- Fire Sprinklered
- 3 Phase Power
- Immediate Access to Grand Avenue



Adam Shteir
Partner
602.769.0521
adam@citywidecre.com

Jack Scanlan
Associate Broker
602.672.4546
jack@citywidecre.com

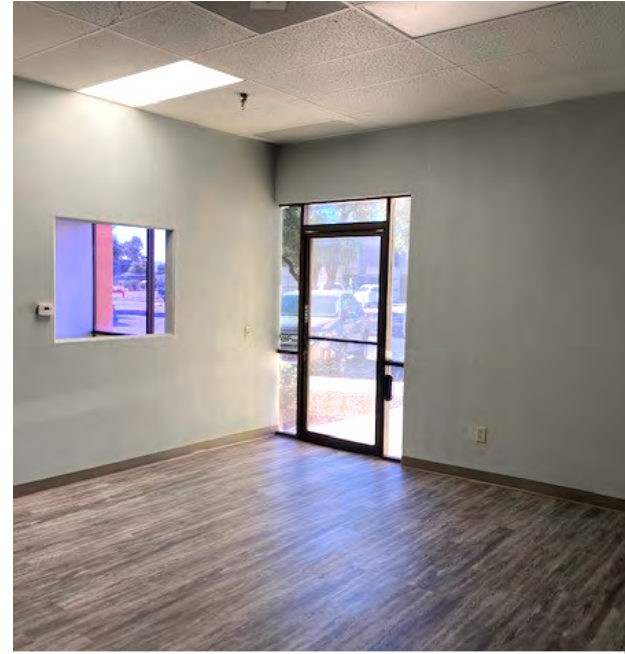
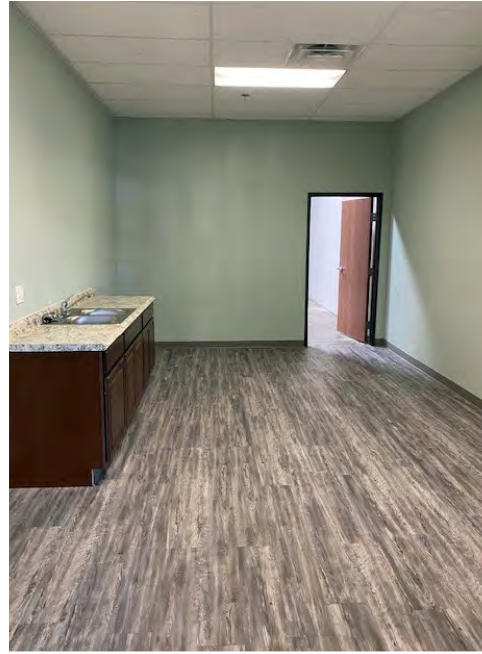
Todd Hamilton
Managing Partner/Designated Broker
602.909.8759
todd@citywidecre.com

2122 East Highland Avenue, Suite 225 • Phoenix, Arizona 85016 • 602.313.1000 • citywidecre.com

All information furnished is from sources deemed reliable. No representation is made as to the accuracy thereof and it is submitted subject to errors, omissions, changes, or withdrawal without notice and to any special listings conditions, including the rate and manner of payment of commissions for particular offerings imposed by principals or agreed to by the company, the terms of which are available to interested principals or brokers. All dimensions are approximate. Owner and/or Broker make no representations expressed or implied as to the accuracy of floor plan/site plan dimensions.



FOR LEASE



FOR MORE INFORMATION

Adam Shteir

Partner
602.769.0521
adam@citywidecre.com

Jack Scanlan

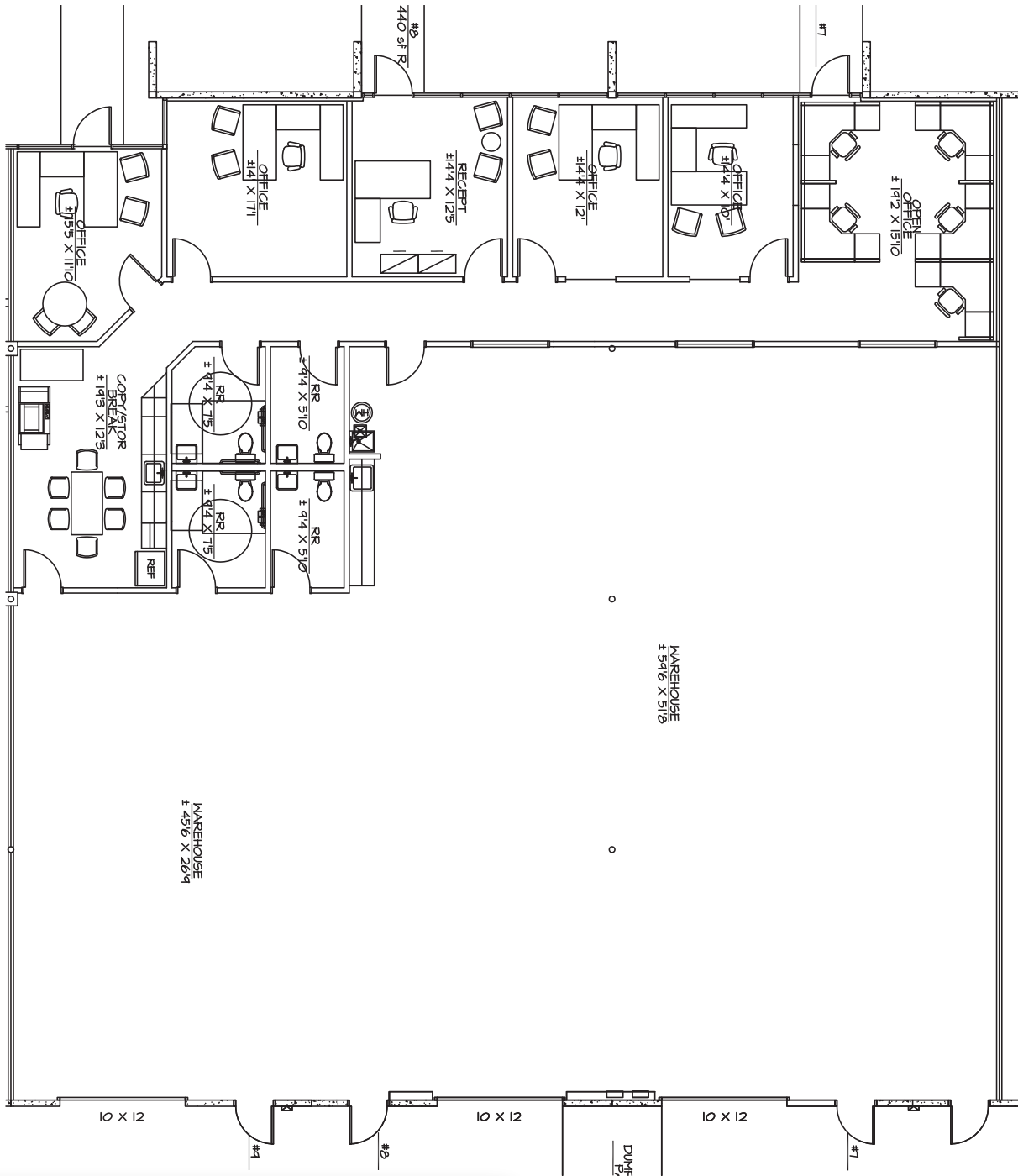
Associate Broker
602.672.4546
jack@citywidecre.com

Todd Hamilton

Managing Partner/Designated Broker
602.909.8759
todd@citywidecre.com

2122 East Highland Avenue, Suite 225 • Phoenix, Arizona 85016 • 602.313.1000 • citywidecre.com

FOR LEASE



FOR MORE INFORMATION

Adam Shteir

Partner
602.769.0521
adam@citywidecre.com

Jack Scanlan

Associate Broker
602.672.4546
jack@citywidecre.com

Todd Hamilton

Managing Partner/Designated Broker
602.909.8759
todd@citywidecre.com

2122 East Highland Avenue, Suite 225 • Phoenix, Arizona 85016 • 602.313.1000 • citywidecre.com