

L'ANSE CREUSE
HIGH SCHOOL BANDS
PARENT HANDBOOK

2023 -2024 SEASON

WELCOME – WELCOME – WELCOME

Welcome to the exciting and rewarding experience of being a band parent! As a band parent you are about to embark on a great adventure. High School band is a community in itself, with a government (band director, associate directors, sections leaders), a unique language (what is the Pit and who is MCBA and why are they monopolizing my Saturdays in the fall?), a treasury system (is there anything left in my student account to pay for band camp?), a transportation system (who or what is Big Blue, Casper, Ron and Peanut?), and best of all – a support system for parents and students to help each other and have the time of their lives!

You will witness your child working harder and longer than you ever thought possible and you will be filled with pride and admiration when they march onto the field or onto the stage and give 110% and perform at a level of excellence that goes beyond the expectation of a high school band.

The L'Anse Creuse High School Band community needs the support of all of its members to maintain that level of excellence. For parents and students, band life can be confusing and overwhelming. The purpose of this handbook is to help calm your anxieties by serving as a reference and a guide. Please feel comfortable in contacting any band staff or band booster member if you have questions or need assistance.

Congratulations on becoming a band parent!

TABLE OF CONTENTS

LCHS Band Chain of Command..... 3

Understanding the L’Anse Creuse High School Bands..... 4

Travel and Transportation..... 6

Drop Off and Pick Up of Students 6

L’Anse Creuse High School Band Boosters..... 6

Marching Band & Marching Competitions..... 8

Uniforms 9

Pre Band Camp And Band Camp..... 11

Oh No! Not More Fundraisers 13

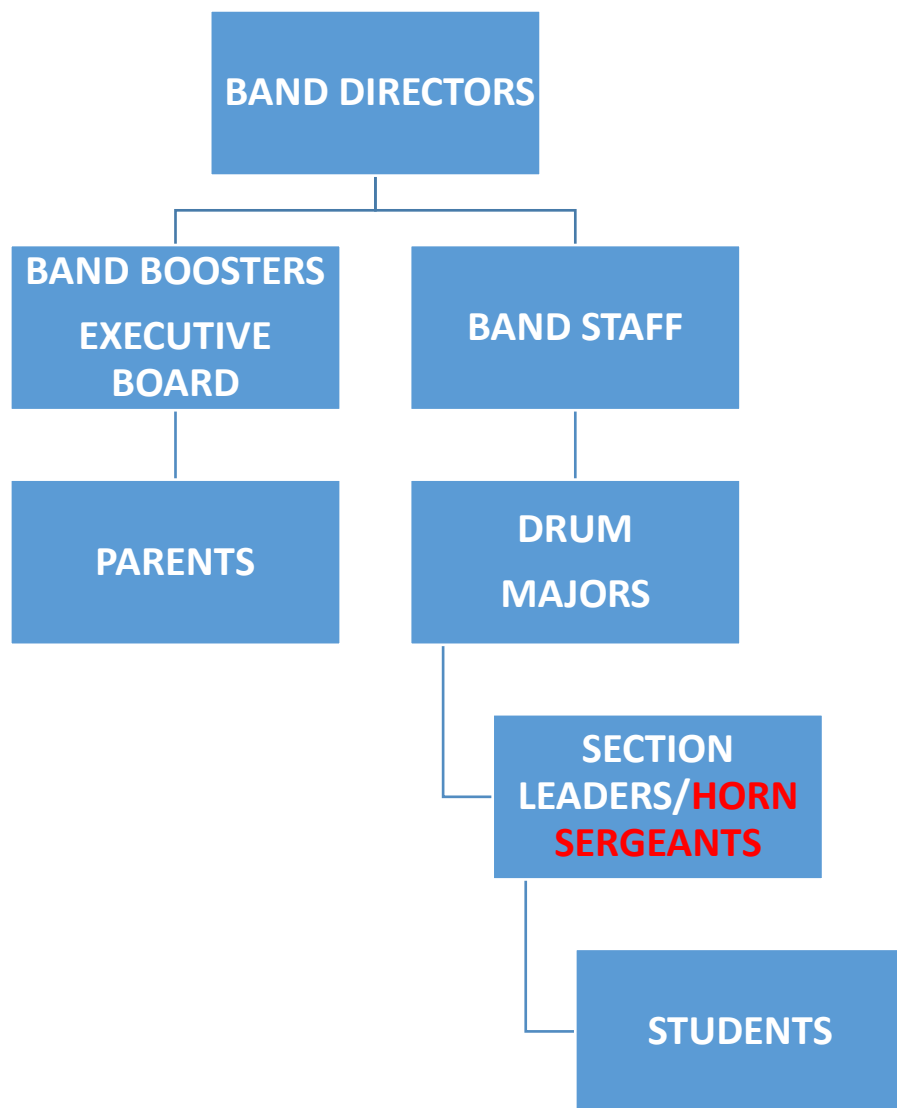
Other Band Related Expenses 15

Additional Information and Resources 17

Band Camp Packing List 19

LCHS Band Staff and Band Booster Directory 20

LCHS BANDS CHAIN OF COMMAND



UNDERSTANDING THE L'ANSE CREUSE HIGH SCHOOL BANDS

In the fall, all bands combine to form the L'Anse Creuse High School Lancer Marching Band.

Marching Band performs in marching competitions, during half-time at home football games, parades, as well as other performance experiences. Requires attendance at pre-band camp and band camp. Marching Band practice and competitions are from June through November. Travel to competitions is required.

Freshman Band is the concert ensemble comprised of all freshmen band members at LCHS. In this class, the members are introduced to high school-level literature and work on the fundamentals of excellence in musical performance expected from the Lancer Bands.

Symphony Band is comprised of students in grades 10-12; membership is open without audition and is offered at two different class periods during the day. The Symphony Band is of the traditional large instrumentation (60+ members) and plays advanced wind band literature from all periods.

Wind Symphony is the premier ensemble of the Lancer Bands. Available to students in grades 9-12 at LCHS through audition only. This premier ensemble plays advanced high school and college-level literature. Participation in private lessons is strongly suggested for members of this ensemble.

Honors Band is where students are given the opportunity to audition for and be recognized by a number of honors bands throughout the State of Michigan sanctioned by Michigan Band and Orchestra Association (MSBOA) and various universities.

Jazz Bands are comprised of dedicated students that meet for credit during the 7th period (after hours) of the school day. There are two jazz bands – jazz band white and jazz band blue, differentiated by level of experience. The band rehearses and performs jazz standards, studies jazz theory and develops improvisational skills.

Color Guard is the section of the marching band that adds dance, flash and color through spinning flag and rifle, dance and props. It is open to all high school students and no prior experience required. High school students in color guard who play an instrument are expected to continue playing their instrument for the full academic year. Those who don't play an instrument only need to enroll in a band class for semester 1. Middle school students are welcome by invitation.

JV/Varsity Winter Guard are independent winter color guard programs of the LCHS band and take place from November through April. Their role is to offer color guard winter season activities as well as training for the marching color guard season.

Solo and Ensemble consist of small group ensembles performing each year in January at "District Solo & Ensemble" or "S&E". Student groups are all self-guided, and encourage

students to collaborate with others while making their own musical decisions. Students perform at a nearby high school for an adjudicator and receive a rating based on performance and preparation. All students in Freshman Band and Wind Symphony are required to participate and perform at the event off-site.

AP Music Theory is an advanced music theory course offered by Director approval. This course is a college-level course that explores all material covered in the first semester of University music theory, spread out over the academic year. College credit can be earned by taking the AP Exam. Students who have a special interest in music and want to sharpen their knowledge are encouraged to apply.

Music Appreciation is a one-semester course offered to any student at LCHS, including those not in the band program. In Music Appreciation, students will study the development of music from an historical and cultural perspective. Starting with the early beginnings of music thousands of years ago, through the eras of classical music and the music of the 20th and 21st centuries. Students will gain a basic understanding and appreciation for all types of music

Drum Majors are the musical and visual leaders of the marching band. Though their on-field job is to conduct the ensemble, they also represent the band program at LCHS and lead the team of student leaders and carry out the vision of the Directors. Students must audition for drum major and summer leadership camp is required.

Section Leaders are the student leaders of each performing section of the band. They are expected to lead by example, carry out weekly sectionals, and communicate important information to their section. Summer leadership training is required.

Sectionals are for Hornline and percussion only, and are section-specific rehearsals to cover musical and visual goals for the sections. Attendance is mandatory, and a schedule will be communicated by the section leaders.

Chamber Ensembles are large ensembles that perform at Solo & Ensemble and are open to students in the high school band program. These ensembles are not required but do offer extra credit. These ensembles include brass, woodwind, flute, clarinet, and saxophone choirs. Information on these ensembles will be communicated in September.

Private Lessons can be arranged through the band office and are **HIGHLY** recommended for the success of the student and the overall band program. Ask about our lessons subsidy program.

CONCERTS

There are two major concerts held during the school year – the Holiday Concert in December and the Spring Concert in May. Concerts are held in the John R. Armstrong Performing Arts Center on Gratiot, south of Hall Road. The concert is free admission, however the concert may have a small charity donation or bake sale. Money received from concerts is used to help offset expenses for scholarships. Other concerts may be scheduled at the director's discretion.

TRAVEL AND TRANSPORTATION

Travel is required for all band members. Students are required to travel with the LCHS band using travel accommodations made by the band director. Any changes in transportation must be approved by the director.

DROP OFF AND PICK UP OF STUDENTS

This is a MANDATORY Policy:

Please drop off and pick up your child at the **front main parking lot** for all **marching band practices**. It is also used by over 150 band students to move their band equipment on and off the football field during practice. Parking in the staff parking lot (small lot by the baseball field) is OFF LIMITS.

Parking for **football games** is only allowed in the **front main parking lot**. Athletic boosters will have the rear parking lot closed off (exception for dropping off the handicapped).

Drop off and pick up for **marching competitions** must be done in the **front main parking lot**. The rear parking lot will be closed off for the semi, trucks, trailers, props and buses to be loaded and unloaded.

If your student is driving themselves to marching practice and competition practice they **MUST** park in the **front main parking lot**.

Please be courteous. The students will not be allowed to exit out the back of the building.

Please go over these procedures with your students. Please help us keep your children safe.

L'ANSE CREUSE HIGH SCHOOL BAND BOOSTERS

WHO AND WHAT ARE THE BAND BOOSTERS?

The LCHS Band Boosters is a non-profit organization that is governed by a constitution and by-laws comprised of band parents or other interested adults. ***If you have a child in band, YOU are a band booster!***

WHAT DO THE BAND BOOSTERS DO?

The LCHS Band Boosters support all facets of the L'Anse Creuse High School Instrumental music program by (1) establishing a closer relationship between home and the band activities of the school (2) assisting in providing financial support for activities, music equipment and materials (not provided for in the regular school budget), educational trips, band camp and

scholarships as funds allow (3) aiding and assisting the band program and to encourage parent and community involvement in all aspects of the instrumental music program that fosters educational development of the students and to (4) conduct fundraising activities to support all of the above.

WHY ARE THE BAND BOOSTERS IMPORTANT TO THE PROGRAM?

The Band Director is given limited resources to support the band program and therefore the LCHS Band Program relies on parental and Band Booster support to not only maintain its current level of programming, but also to expand to a higher level of excellence. The amount of parental involvement in the LCHS Band Boosters is directly proportionate to the quality of the band program.

HOW CAN I GET INVOLVED IN THE BAND BOOSTERS?

Meetings are held on the first Thursday of each month (September – May) at 7:00 p.m. in the band or choir room, whichever is available. A listing of the Band Boosters officers and their telephone numbers can be found at the end of this booklet.

Parent volunteers are the backbone of the LCHS band program! Your child would not have a band program without the support of parents. Get involved!

BAND BOOSTER COMMITTEES - Where to Volunteer

- Transportation & Equipment. Includes movement of band equipment and props. Positions include tractor/truck drivers (must have CDL license), parents to pull trailers with their trucks, mechanics (small engine, hydraulic, automotive).
- Chaperones. Parent chaperones are needed for band camp and band competitions.
- Sewing. Parents needed for sewing assorted costumes, flags.
- Props. Woodworkers, electricians, prop designers (a concept is given, need ideas to make it), prop builders (work with wood, cloth, paint, rope, PVC tubing, wheels, etc.). Parents help move props on and off the field before and after performances.
- Pit (non-marching band equipment). Parents help move the pit equipment on and off the field during performances.
- Marching Uniforms. Fitting students and making adjustments as needed.

- Concert Uniforms. Sizing, hemming, distributing and collecting
- Other committees/fundraisers as they develop

BAND BANQUET

The Band Boosters sponsor a band banquet every year in May to celebrate and honor all band members along with their parents. Seniors are given special recognition and are eligible for a complimentary band banquet ticket when all accounts are paid; all raffle tickets sold for each year in band and all items returned to the band. **(Please note that in order to be eligible for a free Senior Student Ticket and any scholarships, the student account must be paid in full by April 1st of that year.)** Awards and recognition for all band members and senior scholarships are presented at the banquet. Prizes, memory booklets, dancing and good food are all part of the celebration.

The annual band banquet is a self-sustaining activity and there is a cost associated with attending the band banquet. This is **not** a fundraising activity. Ticket price includes, but is not limited to, costs associated with the evening such as food and beverages, all decorations, and awards. Every effort is made by the banquet organizers to keep costs to a minimum while still having a memorable event.

MARCHING BAND & MARCHING COMPETITIONS

In the fall, all bands and color guard combine to form the L'Anse Creuse High School Marching Band. Students who do not participate in Marching Band are not eligible to participate in any other band. It is highly recommended that all freshmen participate in marching band. For the few freshmen that have some verifiable conflict, there is an alternate hour in which they are assigned to play. All 10th, 11th, and 12th grade students must be a member of the Marching Lancers. The Marching Band performs half-time shows at all home football games and marches in the homecoming parade.

The Marching Band also participates in the Michigan Competing Band Association (MCBA) competitions where the band as a group and individuals are judged and scored. Based on the overall rating during the marching season, the band may be eligible to compete in the MCBA State Championship held at the Ford Field in Detroit. Ratings are based on music performance of individual and ensemble, visual performance of individual and ensemble and general effect of music and visual. High Schools throughout the State of Michigan compete against each other and schools are grouped into 5 flights based on the high school population. LCHS Marching Band competes in Flight II. The top ten bands in each flight are eligible to compete in the State Championship. MCBA competition schedules, scoring, rankings and other information can be found on their website: www.themcba.org

These performances are intricately choreographed and include elaborate props, special effects and involve an incredible amount of hard work and dedication on the part of students, staff, and parent volunteers. Competitive shows are much different than a traditional high school marching band, and requires an elevated level of musical, performance, and visual aspects that demands thousands of hours of rehearsals. The LCHS Marching Band is a 24-time State Finalist, has medaled six times, and has made State Finals consistently every year since 2000.

Many hours of practice go into making a high-quality show. Some sectionals start practicing in May and continue through the summer with pre-band camp, band camp and then rehearse throughout the marching season.

COMPETITIONS

Schools throughout the State host MCBA sanctioned competitions. Competitions are generally held on Saturdays. There are expenses associated with these competitions including show entry fee (individual and group), instructional staff, bus transportation, show design, equipment and prop transportation, as well as food and refreshments for the band members. The LCHS Band Boosters assume (through fundraising) a large portion of the expenses. Donations of bottled water and fruit for each competition or money to purchase them are gratefully accepted from each band member. Band members may need to bring money for lunch and/or dinner.

Parents are encouraged to attend the competitions to cheer and support the students. Dates, times and maps are posted in advance of each competition. There is a spectator entry fee and a charge for programs and souvenirs. Advanced tickets may be purchased from the Band Boosters. Proceeds from advance ticket purchases go back into our Band Booster account; proceeds from tickets purchased at the competition go to the hosting school.

UNIFORMS

MARCHING BAND UNIFORM

The school provides the basic uniform. There is a uniform fee of \$50 for hornline members that includes the cost of the competition uniform, gloves, show shirt, marching shoes and dry cleaning expenses. A uniform fee of \$150 is charged for auxiliary students (percussion/guard), which includes the competition uniform, show shirt, shoes, gloves, dry cleaning expenses, and various specialized equipment. The marching uniform fee is part of the band camp payment. The uniform chairperson will provide information about when uniforms are being distributed and order forms for shoes, shirts and gloves are due. These uniforms are very expensive and it is expected that the students will take proper care of them and return them in the same condition that they were received.

Marching uniforms will be returned to the band room after each performance.

The marching band uniform consists of the following

Show shirt (t-shirt printed with the current marching band show title and logo on the front with competition dates on the back). Parents may also purchase a show shirt, or hoodie to wear to band competitions to show their support of the band.

Marching jacket, marching bibbers, and gauntlets

Shako and plume

Raincoat

Gloves. Approximate replacement cost is \$5.00

Marching shoes. Approximate replacement cost is \$30.00. Used shoes as replacements (for forgotten shoes at a competition) \$5.00

Black socks purchased by parents

** Members of the Pit (students who play large non-marching instruments and equipment on the sideline) do not wear gloves or helmet and plume.

COLOR GUARD UNIFORM

The uniforms for color guard are custom designed for each show season that the marching band participates in. The uniform fee is \$150. Color guard uniform and dues fluctuate from year to year depending on returning or new member, generally they include shoes, gloves, jackets, pants and equipment. Band Boosters do contribute to a portion of the cost to help keep fees affordable.

CONCERT UNIFORM

Concert uniforms will be issued after the marching season. The uniform consists of tuxedos for the gentlemen and jumpers or dresses for the ladies. Parents will be responsible for purchasing tuxedo shirts (approximate cost \$20.00). Black dress shoes and black socks are required (not provided). Ladies are expected to wear closed-toe black dress shoes, no platforms or oversized shoes are allowed. There is a \$25 fee that is charged to all students annually for uniform maintenance.

Parents are responsible for having concert uniforms dry cleaned prior to each school year.

Seniors are required to turn in their concert uniform with a dry cleaning receipt attached to the bag before commencements. Seniors who do not turn in their concert uniform by the designated day will receive a diploma hold.

9th, 10th, and 11th grade students **do not** turn in their concert uniform at the end of the school year. Students are expected to keep and properly maintain their concert uniforms throughout

their band program participation. A current cleaning receipt must be turned in to the band room by the last day of school each year to show that the uniform is being properly maintained.

Dry cleaning receipts must be turned into a director for records. Any uniforms not dry cleaned by the end of the school year will be charged a fine.

If you need to exchange the uniform for a different size you should contact the uniform chairperson (see directory). A designated day and time will be set aside for fittings and hemming.

PRE BAND CAMP AND BAND CAMP

Pre band and band camp are held during the summer months and is where the marching band practices for the marching season. Attendance is mandatory. More than 100 hours of instruction will be given during the two weeks of camp. This is equivalent to twenty weeks of normal class time. It is extremely difficult if not impossible to expect to catch up if students are not present. Students who must miss a substantial amount of camp for pre-excused reasons may become alternates in the pre-game and/or half-time shows. This is necessary to remain fair to those students who are present. It is very difficult and frustrating for instructors to try to teach drill when students are missing.

A detailed list of items to bring (and not to bring), an itinerary for departure and return dates and other useful information will be sent to parents in advance of pre camp and band camp. **Information listed below is a general summary of pre camp and band camp policies. Please carefully read carefully information that is sent to you from the Band Director.**

Pre-camp is mandatory for all members at their designated rehearsals. Pre-camp will set the attitude, work ethic and tempo for the camp experience and even the entire season. In the event that a student does not attend pre-camp and has not notified Mr. Malburg in advance, the student's spot will be removed off of the rosters and their name placed on the schedule change list with the counseling office. Rehearsals will consist of indoor/outdoor marching rehearsals as well as sectional time and full music rehearsal. Students should bring a **1/2 gallon or larger water cooler** for drinks on the field. NOTE: It is essential that students each have their own water cooler and NOT share with other students. This is for health and sanitation reasons.

Band camp is held at Blue Water Campground, located just north of Lexington, Michigan. The camp facilities include student housing in dormitory style buildings and also "cabin" type rooms. Girls will be housed in the dormitory and boys will be housed in the cabins. Community shower facilities are located at both areas. The parent chaperone campground area has full electrical and water hook-up available. There are also several motels in the area for parents who do not camp. All visitors/volunteers who come to camp must be registered with the camp director. This is for the safety of all the children.

Dining hall and indoor rehearsal facility/recreation hall are available daily featuring a selection of foods with cafeteria style food service (open line with seconds allowed). All meals are

prepared and served by parent volunteers under the leadership and guidance of an experienced food service coordinator (who is also a band parent). Many parent volunteers are needed to help in the kitchen. Duties include prep work, cooking, baking, serving, dishwashing, salad bar set up, and cleaning. Parents may come up for a portion of the day, the full day, several days or the full week. Vegetarian meals can be provided if the food service coordinator is notified in advance of departure. Please notify staff of any food allergies.

Parents should please encourage your child to eat three substantial meals a day while at camp. Band camp is not a time for your child to worry about their weight. Students will work many hours each day in the sun and will work off many more calories than they usually do. It is imperative that students eat properly. Failure to do so may cause sickness, nausea, weakness and fainting spells. The chaperones are there to help ensure that the students have a successful camp experience. If they become aware of a student that is not eating on a regular basis, the parents will be notified.

What to Bring to Band Camp

A band camp packing checklist is included in the handbook. (Note: students cannot rehearse in jeans throughout the entire marching season!) Two pairs of supportive broken in athletic shoes, in case one gets wet, are recommended and two pairs of sweat socks per day. Shoes and socks are required at all times. Students should bring a small amount of money to be used to purchase pop, juice, bottled water and snacks during break times and at night. All other meals at camp are paid for by the camp fee. Students should not bring large sums of money – it is asking for problems. Cell phones and laptops are discouraged.

Medical Information or Concerns:

All students must have a completed medical form, a copy of any insurance card and permission slip turned in prior to departing for band camp. Please alert the director in advance of any medical conditions which may be of importance during the camp. All students who take prescription and over the counter medication must check their medication with the camp nurse prior to leaving for camp. (Insulin needles will also need to be checked in to the nurse for the duration of camp). The band will supply basic medications such as Tylenol, ibuprofen, Sudafed or Benadryl. All medications must be in their original container and placed in a zip-lock plastic bag with the student's name clearly written on the bag. **All** medications will be dispensed by the camp nurse (this is a requirement of the State of Michigan). Students who require self-medication items such as inhalers or epi-pens, may carry them during camp. The camp nurse will have basic first aid supply items available. Students who require medical attention other than basic first aid will be taken to the nearest health care facility.

Parent Visitation

If you plan on being in the area to visit, Mr. Malburg must have a written note stating the day and time that you will visit. Visitors who have not notified Mr. Malburg prior to the group leaving for camp will not be allowed on the property. This is for the safety of the students. All visitors must sign-in at the main lobby (by the cafeteria) and wear a name tag during their visit.

Students will not be allowed to leave the camp for any reason. Please do not ask. Students may visit with family members during mealtimes or during free time in the authorized visiting areas. At all other times students will be expected to be at the assigned activity with the remainder of the band. Family members are only allowed to visit during approved times, no exceptions.

Although it is recognized the desire to do something nice for your child while at camp, please remember the Director's emphasis on fairness and consistency. Most students will not have visitors at camp and therefore it is not appropriate to give your child snack food, etc., unless you would like to provide for the entire band.

Parents may send "care packages" or cards and letters to the campground. Please put your child's name on the box and mail it to the following address:

Child/s name
C/o Blue Water Campgrounds
7291 County Farm Road
Lexington, MI 48450

Please be aware that for the safety of the students all packages will be opened by staff and contents searched prior to distribution.

Band Camp Rules and Restrictions

Students and parents should make themselves aware of the rules of conduct written out by the L'Anse Creuse High School Administration and the L'Anse Creuse High School Band Handbook. Additional rules and restrictions related to band camp will be distributed to students and parents prior to departure. Anyone caught violating the rules of conduct or rules and regulations of band camp will be sent home immediately at the parent's expense and removed from the band program.

"OH NO!! NOT MORE FUNDRAISERS!!"

Unfortunately, fundraisers are necessary to maintain and enhance your child's band program! Band is not a "pay to play" activity like sports – all students may participate in band. However, a high quality band program costs money. In a perfect world, there would be unlimited funding for instruments, band uniforms, transportation, awards, music, band camp, trips, and refreshments for practices and competition. Expenses for marching season alone include show design, music, sectional instructional staff, props, special uniforms, flags, equipment operation and transportation fees, and competition entry fees. Regretfully we don't live in that perfect world, so yes. we must have fundraisers.

Fundraisers are directed by the Band Booster organization. Proceeds from fundraisers are divided between the participating students and the Band Boosters. Unless otherwise

stipulated, students who participate in fundraising activities receive two-thirds of the proceeds which goes into their own activity account and the Band Boosters receive one-third of the proceeds. The money in the activity account can only be used for band camp and band travel expenses only.

Please note – the activity account is not considered a “bank account”, but is money set aside from fundraisers that may be used to help offset certain band expenses. Any unused money reverts back to the Band Boosters general fund.

TYPES OF FUNDRAISERS

EXPECTED FUNDRAISER

Raffle Tickets – This is our major fundraiser for the year. Without the success of this raffle our marching program would not continue at the outstanding level it currently is.

LCHS Bands receive most of their funding through the Band Boosters and not the school district. Most of these funds are used during marching season to cover transportation, uniforms, instructors, flags, props, scenery, competition entry fees and many additional expenses.

This year we need to raise more than \$200,000 to support the various band programs. If all raffle tickets are not sold, the success of your child’s band program will be in jeopardy!

The cost per ticket is \$10 and each student is issued twenty raffle tickets. It is expected that all students will sell all 20 tickets. The proceeds from the first twenty raffle tickets sold will be placed in the Band Booster account. The students will receive \$5.00 in their activity account for each additional ticket sold. Senior students who have sold all raffle tickets for each year in band will not have to pay for their own band banquet ticket and will be eligible to apply for a Band Booster scholarship. If all 20 tickets are sold prior to band camp, camp fees will be discounted \$100.

Tax deductible donations of \$200 per child in band, or a combination of raffle tickets sold plus a donation which equals \$200 can also be made in place of ticket sales (which will keep students eligible for scholarships, awards, and a free ticket to the band banquet during their senior year).

OPTIONAL FUNDRAISERS

BINGO – Very successful fundraiser for the general band account and student accounts, held all year long. BINGO runs on Tuesdays, Thursdays and Saturdays and earnings vary for each night of the week. This is our MAIN fundraising program.

Contact Angela Bilen (586-260-2674) if you are interested in working bingo. You can earn \$50 per shift towards your student's account. You can pay for all four years of marching band without a penny out of pocket through bingo!

Kroger Rewards – Sign up at www.krogercommunityrewards.com and turn your Kroger card into cash back just for shopping. Our school code is 82717. Make sure to let the Kroger coordinator for the band know your Kroger card number so your student account can receive proper credit.

Raise Right (aka Scrip) Program – Gift certificates from national and local retailers. Gift certificates are sold to organizations at a discount, families purchase gift certificates at full face value – profit is divided between student's activity account and the Band Boosters.

Spring Flower Sales – this fundraiser starts each April with flower delivery in May. Incoming freshmen are welcome to participate.

Brick Paver Memorial Patio & Garden – Memorialize a person, event, etc., in the beautiful brick paver and patio garden outside the band room.

I HATE FUNDRAISERS – CAN I JUST WRITE A CHECK?

YES! You can write a check payable to L'Anse Creuse High School Band Boosters and your donation is tax deductible (as long as no merchandise is received in exchange for your donation).

OTHER BAND RELATED EXPENSES

Band camp is not the only expense for participating in band. The purpose of this section of the handbook is to ease the shock of expenses related to High School band and to help you budget and/or plan your fundraising activities.

The majority of expenses are related to marching season (August – November). Listed below is a sampling of expected costs associated with High School band, (costs may be subject to change) Please remember one very important thing – **the experience and memories you and your child will have in High School band are priceless!**

- Band Camp (\$500) plus applicable uniform fee. This fee incorporates the cost of show shirt for all members and includes marching shoes members. This fee also includes the dry cleaning costs and maintenance of marching uniforms. Students who sell all of their raffle tickets **prior** to the start of band camp will have camp fees reduced by \$100.
- Marching shoes (replacements)

- Show shirt (new shirt each season worn for each marching competition and other band activities. Parents often order a shirt for themselves and wear them at competitions to show support (see page 10).
- Gloves
- Black socks
- Tuxedo shirt for concert season (for those wearing tuxedos only)
- Dry cleaning fees – marching band uniform and concert uniform (separate fee for concert uniform)
- Admission fee to football games. Season passes may be purchased from the Athletic Boosters.
- Admission fee to competitions (for parents and siblings)
- Competition Programs
- Food and refreshment money for students at the competitions (also for parents who attend)
- School sponsored band pictures
- Pictures, DVD's & videos sold at State Finals
- Lancer souvenirs such as hoodies, sweatshirts, hats, etc.
- Band Banquet
- Solo & Ensemble entry fees (typically \$7-15 per student per event)
- Donations of bottled water, fruit or money to purchase them.

BAND TRIPS

Approximately every two years, the band goes on a major trip. Additional trips may be added at the discretion of the Director of Bands. Participation is optional and students may use fundraising activities to help offset the cost of the trip. These trips are open to band students, their families and extended families. Participation on band trips may be restricted at the discretion of the Director of Bands.

ADDITIONAL INFORMATION & RESOURCES

(or, how do I find out about what is going on other than relying on my child to bring home information!)

The Band Director and the Band Boosters post information about upcoming events, volunteer needs, fundraisers, rehearsals, band camp, etc., in the band room, on the Band App, and on the band website at www.cutttime.net (see below). The wall adjacent to the director's office has slots for flyers, forms and notices. Parents have been observed staring at the wall of notices muttering "I didn't know about that!" Note to new freshman parents – yes, students are actually given information about upcoming events, but somehow it gets lost once they leave the band room! The Director and Boosters do have periodic bulk mailings; however, they are expensive and time consuming.

There is a drop safe box in the Directors office that can be used for dropping off payments or other confidential or secured correspondence. The box is checked regularly and contents distributed to the appropriate person. DO NOT give any payments to a staff member or section leader – it MUST be turned into the safe.

The band also has a post office box where payments and/or correspondence can be sent to. For security reasons, payments should be made by check or money order. NO CASH PAYMENTS.

**LCCHS Band Boosters
P.O. Box 1145
Mt. Clemens, MI 48046-1145**

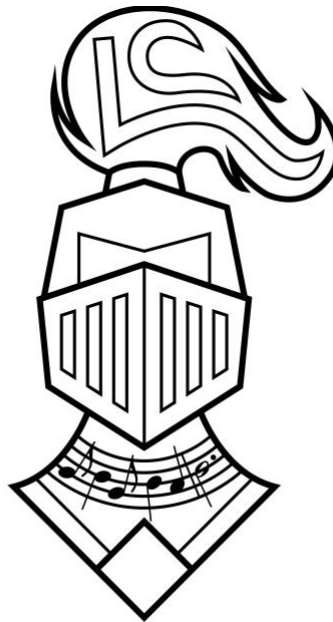
SO HOW CAN YOU BE KEPT INFORMED?

- Visit the band room (more frequent during marching season). The band room is open after school hours and occasionally into the evening depending on after school activities and lessons.
- **ATTEND MONTHLY BAND BOOSTER MEETING** (first Thursday of each month at 7:00 p.m., September through May)
- Visit the L'Anse Creuse High School Band Cut Time website at: www.cutttime.net.

- Contact by telephone or email a band staff member or any band booster (see directory at the end of booklet).
- Harass and nag your child, however, this method of obtaining information is the least successful.

Most importantly, remember that every single band parent was once lost and overwhelmed! **Those parents who seem to know what is going on are that way because they have gotten involved** – involved with the band and therefore involved with their kids. Those are the same parents who have smiles on their faces, pride in their hearts, occasional tears in their eyes and who at the end of a concert or marching competition profess that being a band parent is an incredibly rewarding experience and worth all the time and energy.

That pride and joy can be yours – become involved!



BAND CAMP CHECKLIST

INSTRUMENT, BEDROLL OR SLEEPING BAG (+ ONE SHEET), ONE SUITCASE

**NAME TAGS ON ALL SUITCASES, BAGS, AND AS MANY PERSONAL ITEMS AS POSSIBLE
NO GLASS!**

	\$\$\$MONEY\$\$\$ (SNACKS) ALARM CLOCK
	BAND-AIDS, BLISTER PADS (NON-MEDICATED)
	BEDROLL (FITTED SHEET, 1 OR 2 BLANKETS)
	BOOKS, ELECTRONIC GAMES, BATTERIES, RECHARGERS
	BUG REPELLANT
	CAMERA
	MP3 PLAYER, SPEAKERS, RECHARGERS
	DEODORANT
	DOT BOOKS
	EXTENSION CORDS/POWER STRIPS
	EYEGLASSES, CONTACTS & SUPPLIES
	FANS FOR CABINS/ROOMS
	FEMININE HYGIENE PRODUCTS
	FLASHLIGHT, BATTERIES
	GLUE STICKS/ TAPE/ SCISSORS
	GYM SHOES (2 PAIRS - BROKEN IN!)
	HAIR ACCESSORIES (SCRUNCHEES, ETC.)
	HAIR BRUSH
	HAIR DRYER
	HAT, VISOR
	INSTRUMENT AND SUPPLIES (EXTRA REEDS)
	JACKET/HOODIE
	KLEENEX TISSUES
	LAUNDRY BAG OR GARBAGE BAG
	LIP BALM (NOT CARMEX OR CAMPHOR)
	LONG PANTS (NO JEANS)
	LONG SLEEVE SHIRT (IN CASE OF SUNBURN)

	LYRE, FLIP FOLDER
	MEDICATIONS, VITAMINS, ETC.
	MUSIC, SUPPLIES
	NAMETAG
	PENCILS, HIGHLIGHTER
	PILLOW
	PJ'S
	RAIN GEAR (PONCHO, ETC.)
	RECHARGERS FOR ELECTRONICS
	SANDALS/FLIP FLOPS (FOR SHOWER)
	SHORTS, TOPS (NO BATHING SUIT TOPS)
	SLEEPING BAG, SHEET (FITTED TWIN SHEET)
	SNACKS FOR FREE TIME
	CASUAL CLOTHES FOR TALENT SHOW AND DANCE
	SOAP, SHAMPOO
	SOCKS (2 PR./DAY)
	SHOE LACES/POUCH/HOLDER FOR DOT BOOK
	SUNGLASSES
	SUNSCREEN
	SWEATSHIRT
	SWIMSUIT, WATER SHOES (FOR THE LAKE!)
	T-SHIRTS, TANK TOPS
	TOOTHBRUSH, TOOTHPASTE
	TOWELS, WASH CLOTHS
	UNDERWEAR
	WATCH
	WATER COOLER- 1 GALLON
	DECORATIONS FOR ROOMS (CHRISTMAS LIGHTS, BANNERS, ETC)

DON'T FORGET YOUR ENTHUSIASM AND DEDICATION!!



2023/2024 LCHS BAND STAFF DIRECTORY

<u>NAME:</u>	<u>TITLE:</u>	<u>PHONE #:</u>	<u>EMAIL ADDRESS:</u>
Ryan Malburg	Director of Bands	586-783-6400 Ext. 2179	malbury@lc-ps.org
Walter McCray	Assistant Director of Bands	586-783-6400 Ext. 2179	mccrawa@lc-ps.org
Ralph Biggs	Percussion Director	586-260-7789	snare5@aol.com
Becca McCoy	Color Guard Director	248-217-1344	rsuemccoy@gmail.com
Jason Ihnat	Front Ensemble Coordinator	586-214-4054	jihnmat@emich.edu
Adrian Bruce	Pit Instructor		bruceadrianc@gmail.com

2023/2024 LCHS BAND BOOSTER DIRECTORY

EXECUTIVE BOARD MEMBERS

Jen Dera	President	586-214-1213	jen@captureamomentphoto.com
Angela Bilen	Vice President	586-260-2674	ang@captureamomentphoto.com
Stacey Edwards	Treasurer	586-292-7555	sbcmedwards@gmail.com
Walter McCray	Correspondence Secretary	586-783-6400 Ext. 2179	mccrawa@lc-ps.org
Tanya Scwendenman	Raffle Ticket Chair	586-531-5630	tanyasmiles2@yahoo.com
Liza Daniels	Recording Secretary	586-484-4571	lilliz55@yahoo.com

COMMITTEE CHAIRPERSONS

Joani Rintz	Student Activity Accounts	586-524-4607	joani1958@gmail.com
OPEN	Band Banquet	OPEN	OPEN
Amanda Ledbetter	Band Camp Coordinator	586-707-0147	amanda.robyn.jones@gmail.com
Angela Bilen	Brick Paver Patio	586-260-2674	ang@captureamomentphoto.com
Becky McEntee	Chaperone Marching Season	586-354-7696	beckymcentee@yahoo.com
Jen Dera	Lancer Merch./Embroidery Jackets	586-214-1213	jen@captureamomentphoto.com
Susie Raftery	Marching Season Meal Setup	(586) 770-7836	susiecorsetti@hotmail.com
OPEN	Marching Season Tickets/Ford Field	OPEN	OPEN
Denny Dera	Props & Transportation	586-322-6941	dennyadera@gmail.com
Mee Mee Ashba	Uniforms, Marching & Concert	586-610-9985	m2ashba@yahoo.com

FUNDRAISING CHAIRPERSONS

Cindy Edwards	Spring Flower Sale	248-515-3258	cindy.edwards68@yahoo.com
Kellie Kosuth	Spring Flower Sale	586-549-6335	kellie429@hotmail.com
Denise Milton	Kroger Rewards	586-665-7953	dmilton@ameritech.net
Jen Dera	Poinsettia & Wreath Sales	586-214-1213	jen@captureamomentphoto.com
Nora Cash	Scrip/RaiseRight Program	248-561-7782	n_rockey@hotmail.com
Angela Bilen	Bingo	586-260-2674	ang@captureamomentphoto.com
Brad Bilen	Sponsorship Opportunities	248-885-7197	bradb@lancerbandboosters.com