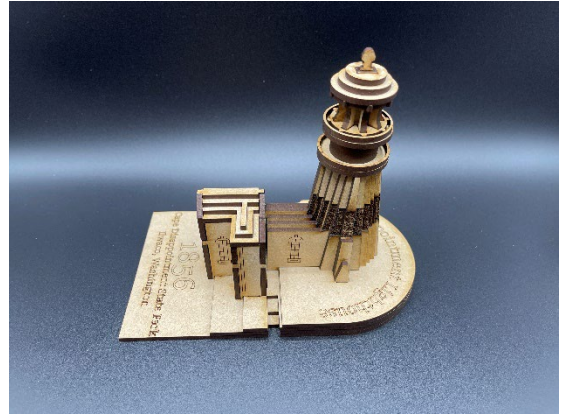


Cape Disappointment Lighthouse

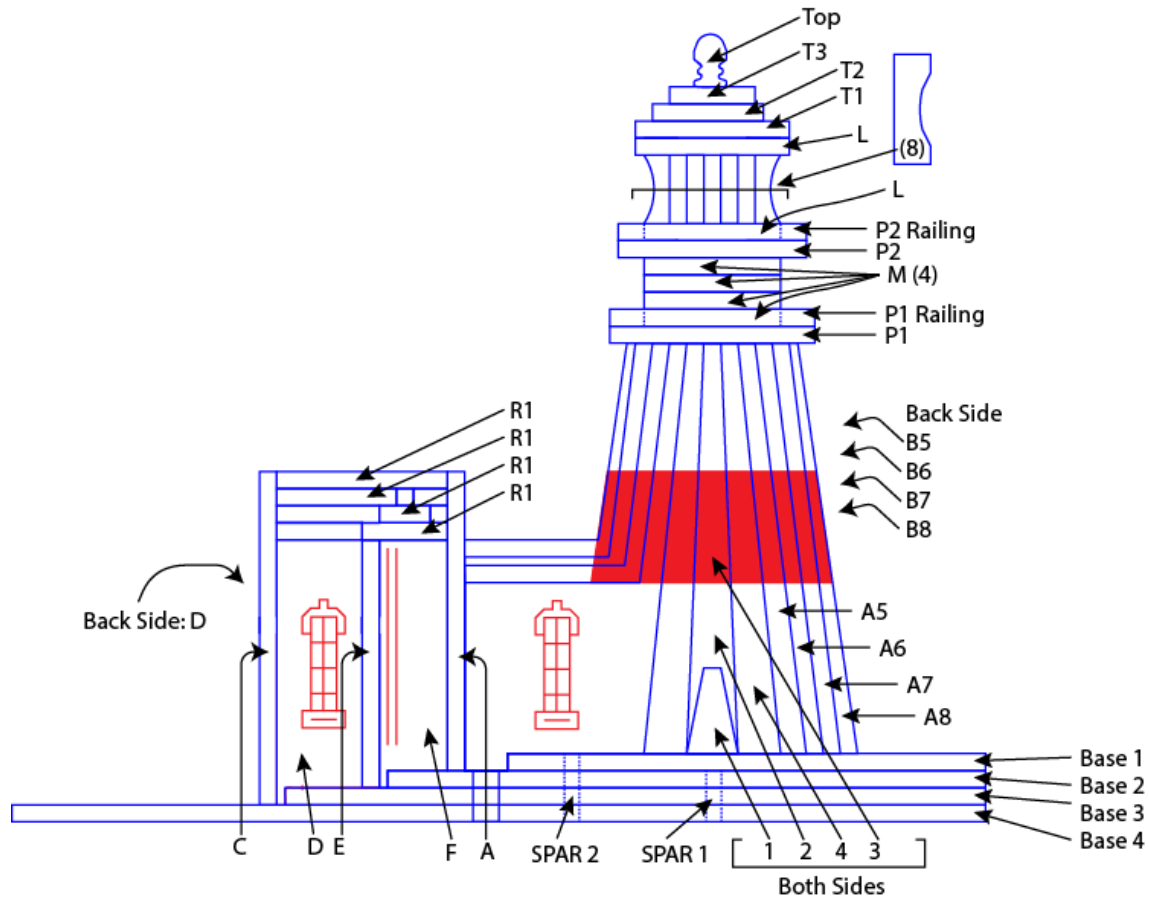


Ilwaco, Washington

Thank you for purchasing the Fine Arts Kit of the Cape Disappointment Lighthouse in Ilwaco, Washington. This iconic lighthouse has been built in 1856 and it overlooks the Graveyard of the Pacific, well known for all the shipwrecks off this coast. I draw and print all my models and kits from scratch right here in Ocean Park, at beautiful Klipsan Beach, halfway up the Peninsula. I hope you are having a lot of fun putting the kit together and you will enjoy displaying it either here on the peninsula or from where you have visited us from.

Bernhard

The pieces:



Instructions:

For this model, I use the Gorilla Glue Brush and Nozzle glue. It works well both for gluing the flat spaces as well as pinpoint precision.

Start by building up the base. The lighthouse stands on a slope and the base resembles that. Look for pieces Base 1 to 4 and the two spars. Lay down Base 4 and insert the spars so the text shows right side up. Apply glue and add all base pieces. The spars will ensure the base is aligned.

Not gluing them to the base yet, by adding them to the center of the slot right below 'Base 1" glue A8 and B8 together. Then by using the slot as a guide to align the pieces keeps adding A7-5 and B7-5 on either side. Those pieces not interchangeable and are building the rounding and flare of the tower. Make sure that as you add the pieces the dark ring around the tower is visible on every piece.

Next, add pieces 4 to both sides, then glue the tower to the base. Then add piece to start building the house and hold the tower in place. Add it to the slots in the base a 45 degree angle the rotate into the slot on the tower. Add the rear wall, part B perpendicular to part A. Add part F on the opposite side, followed by E, D, and the rear wall C. That finishes the outer walls of the house. Make sure to follow this sequence, the parts are a tight fit and this way is the easiest to get them in. Now add the roof, starting with R1, then R2, and R3. R4 goes on top, add it with the text facing down. The building is done!

To finish the rounding of the tower, add 3, 2, and 1 to both sides in the slot. Now on to the top of the tower. Add the first platform, P1 by gluing it to the top. Add the railing (note that the railings of P1 and P2 are different. Slide on the four M pieces. Next comes P2 and the railing. Slide on one piece L with the text facing down. We will now assemble the lens. The easiest way is to now add glue inside the eight slots of piece L. Make sure there is no glue leaking on top. Slide on the second L piece with the text facing up, followed by inserting the lens pieces with the concave part facing out. Push down on the lens pieces and pull up the second L piece so the stay in the slot on the bottom and are flush with piece L on top. Add glue on top of the lenses and piece L, slide on T1 and push L against the bottom of L1. Glue on T2 and T3, text facing down. Glue the emblem on top and your lighthouse is done. Congratulations!

