

**Utility Storage Shed Specifications
Clairborne at Lexington Farms**

LOCATION: Rear of House

- Not less than 10' from any rear or side property line and inside plane of each end (side) of house extended to rear line (See Attached Diagram #1)

SIZE LIMITS:

- Not less than 64 square feet
- Not larger than 144 square feet
- Not longer than 14' on a side
(See Attached Diagram #2)

HEIGHT:

- Maximum 10'6" height to ridge
- "A" frame roof design only

ROOF MATERIAL:

- Asphalt Shingles to match roof of home

SIDING:

- Vinyl siding to match home

COLOR:

- All siding and trim to match home...no exceptions
- Door color to match siding color

LANDSCAPE:

- All landscape must match house (shrubs) and be located on all blank sides. A minimum of 3 shrubs per side and at least 2'6" in height.

GENERAL:

- Only one shed per lot
- Frame construction - no metal sheds (aluminum, steel, etc.)
- Door of shed to face rear of house
- Max number - two windows 2/0x2/0 in size
- Shed to set on 4"x12"x2" concrete "patio blocks" or full concrete pad

All sheds require approval of architectural committee prior to installation

CLAIRBORNE SHED DETAIL

DIAGRAM #2

ROOF TO MATCH HOUSE

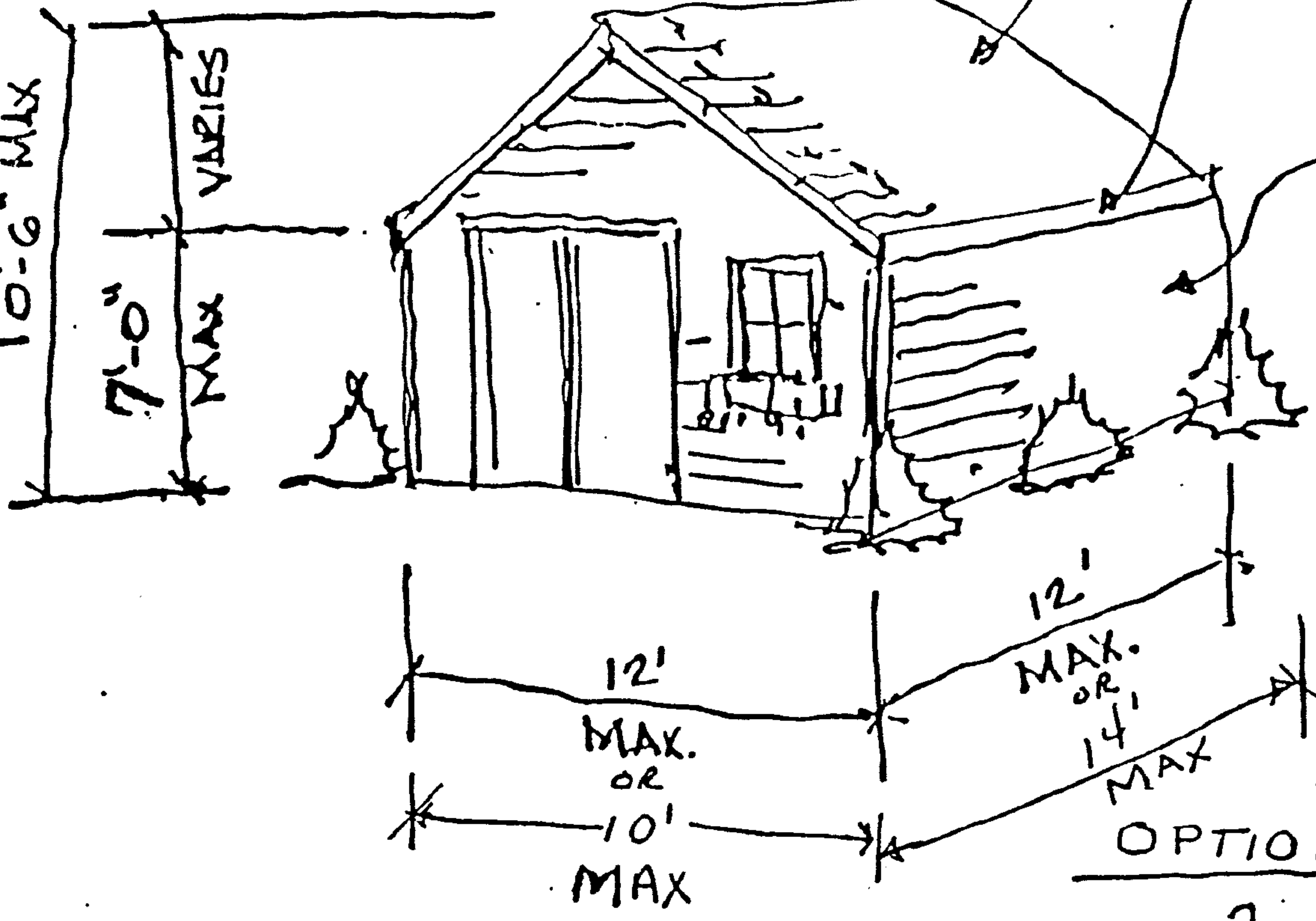
TRIM TO MATCH HOUSE

SIDING TYPE & COLOR TO MATCH HOUSE

LANDSCAPING
3 EVERGREENS ON EACH BLA SIDE MIN. 2'-6" HIGH

OPTIONAL WINDOWS

2 WINDOWS MAX
SIZE 2' x 2' MAX



CLAIRBORNE SHED LOCATION

DIAGRAM # 1

