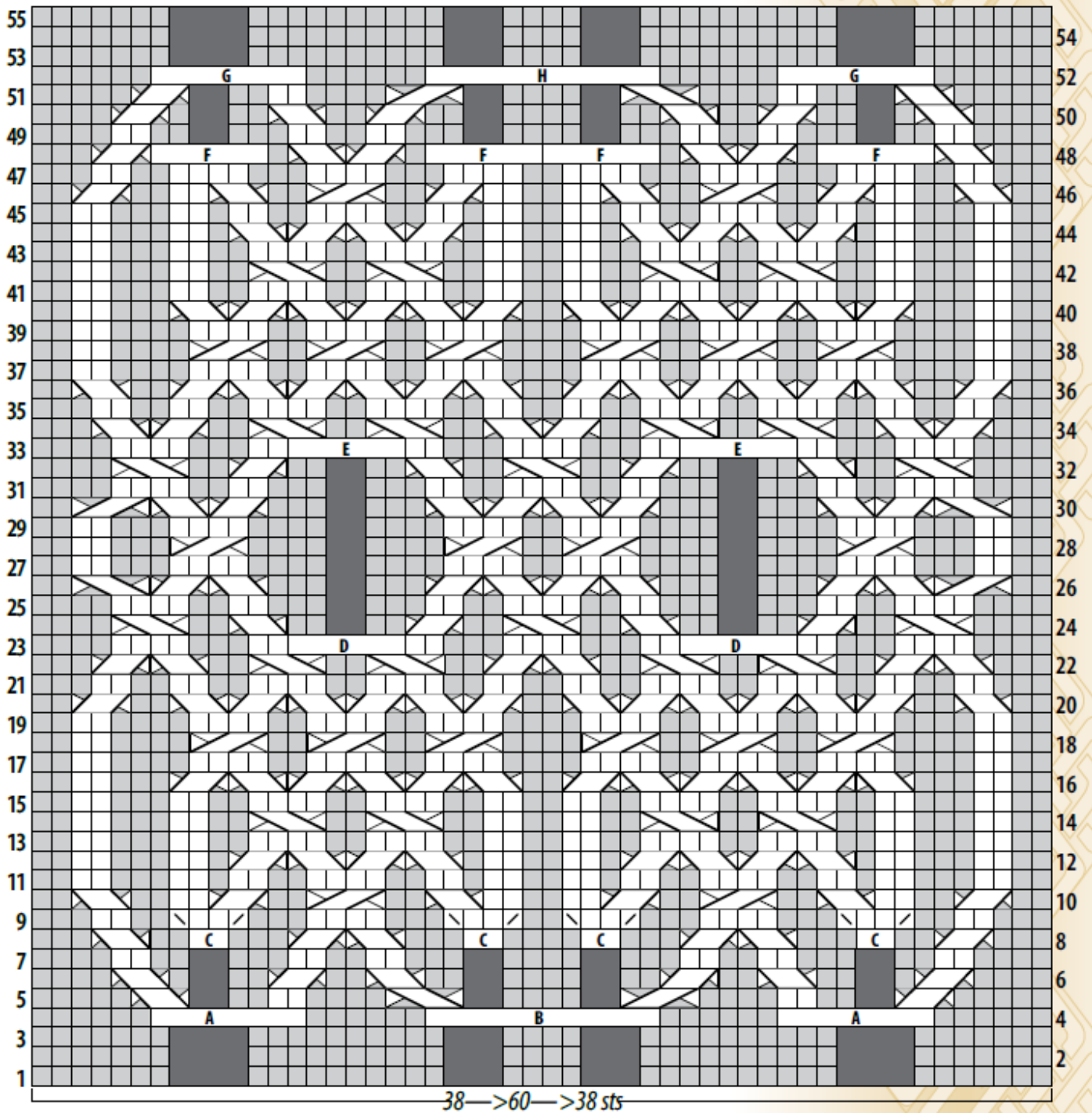


# Betty Salpekar – pages 24 & 25 – Block 20

**Chart A**



**2/1 RPC (on RS)** Sl 1 to cn, hold to back, k2; p1 from cn.

**(on WS)** Sl 2 to cn, hold to back, k1; p2 from cn.

**2/1 LPC (on RS)** Sl 2 to cn, hold to front, p1; k2 from cn.

**(on WS)** Sl 1 to cn, hold to front, p2; k1 from cn.

**2/2 RC** Sl 2 to cn, hold to back, k2; k2 from cn.

**2/2 LC** Sl 2 to cn, hold to front, k2; k2 from cn.

**2/2 RPC (on RS or WS)** Sl 2 to cn, hold to back, k2; p2 from cn.

**2/2 LPC (on RS or WS)** Sl 2 to cn, hold to front, p2; k2 from cn.

**2/1 RPC (on RS)** Sl 1 to cn, hold to back, k2; p1 from cn.

**(on WS)** Sl 2 to cn, hold to back, k1; p2 from cn.

**2/1 LPC (on RS)** Sl 2 to cn, hold to front, p1; k2 from cn.

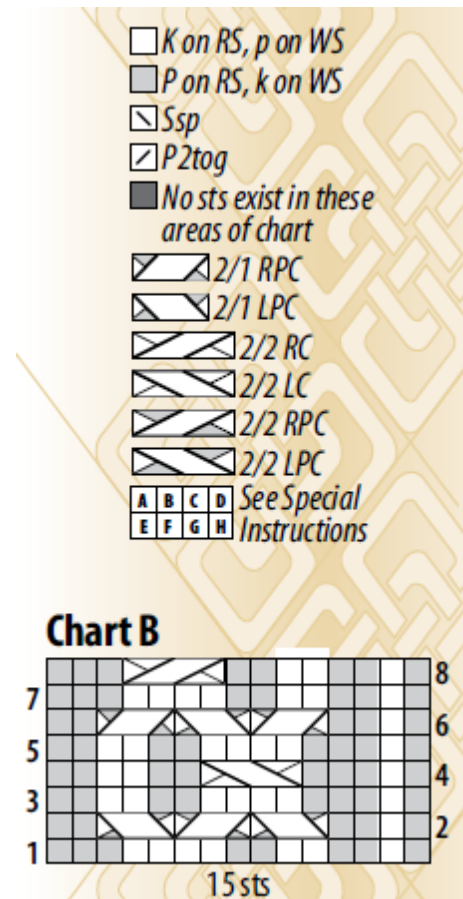
**(on WS)** Sl 1 to cn, hold to front, p2; k1 from cn.

**2/2 RC** Sl 2 to cn, hold to back, k2; k2 from cn.

**2/2 LC** Sl 2 to cn, hold to front, k2; k2 from cn.

**2/2 RPC (on RS or WS)** Sl 2 to cn, hold to back, k2; p2 from cn.

**2/2 LPC (on RS or WS)** Sl 2 to cn, hold to front, p2; k2 from cn.



## Special Instructions (SI)

**A** With separate yarn and dpn, invisibly cast on 3 sts. [P 1 row, k 1 row] twice. Cut yarn. Place cast-on sts (removing waste yarn), on another dpn. Place 3 sts of either dpn (with knit side facing) on LH needle, then with RH needle, k2tog, ssk, p2, sl 1, place 3 sts from 2nd dpn on LH needle (twisting needle so the knit side is facing), sl 1 from RH needle to LH needle, k2tog, ssk.

**B** Work as for SI-A, except work 6 rows in St st instead of 4 and p4 instead of p2 between ssk and sl 1.

**C** Insert LH needle from front to back under 2nd strand down between st just worked and first st on LH needle and work into strand as foll: k into back and front of st, yo, k into front—4 sts; turn, p1, sl 2, p1, turn; k4.

**D** P next 2 sts onto a dpn and hold to RS of work, then with RH needle, k into front and back of next 2 sts on LH needle, p next 2 sts onto a 2nd dpn. Bring dpn to RS of work and using a separate 10" strand of yarn, graft sts on dpns tog using St st graft.

**E** Work as for SI-A, with these changes: Work 2 rows St st, instead of 4. When placing sts on LH needle, place them with purl side facing and make sure that 3-st cord falls to RS of work. Then with RH needle, ssp, p2tog, k2, place 3 sts from 2nd dpn on LH needle (making sure cord is not twisted), ssp, p2tog.

**F** P into front and back of next st, [sl next 2 sts to a dpn] twice. With a separate strand, graft sts on dpns tog, then p into front and back of next st on LH needle. (After square is finished, run tail from grafting through back of p sts to close hole.)

**G** Sl next 2 sts to dpn and leave in front of work, p into front and back of next 2 sts. With a separate strand, [p 1 row, k1 row, p 1 row] over 2 sts on dpn. Sl next 2 sts from LH needle to a 2nd dpn. Graft sts on dpns tog.

**H** Sl next 2 sts to dpn and leave in front of work, [p into front and back of next st, p1] twice. With a separate strand, [k 1 row, p1 row] twice over 2 sts on dpn. Complete as for SI-G.



**Chart A**

