

AFGHAN BORDER

Cast on 16 sts. *Work rows 1–14 of Afghan Border Chart 30 times, then work rows 1–28 of Afghan Corner Chart, work rows 1–14 of Afghan Border Chart 24 times, rows 1–28 of Afghan Corner Chart; rep from* once more. Place sts on hold. Sew on border. Graft open sts to cast-on row.

AFGHAN BORDER CHART

OVER 16 STS

Row 1 and all RS rows (except 13) (RS) K16. **2 and all WS rows** K4, p12. **13** 6/6 RC, k4. **14** Rep row 2. Rep rows 1–14 for Afghan Border Chart.

AFGHAN CORNER CHART

OVER 16 STS

Rows 1 and 3 (RS) K16. **2, 4** K4, p12. **5, 7, 9** K12, W&T. **6, 8, 10** P12. **11** K12, HW, k3. **12, 14** K4, p12. **13** 6/6 RC, k4. **15–22** Rep rows 5–12. **23, 25** K16. **24, 26, 28** K4, p12. **27** 6/6 RC, k4.

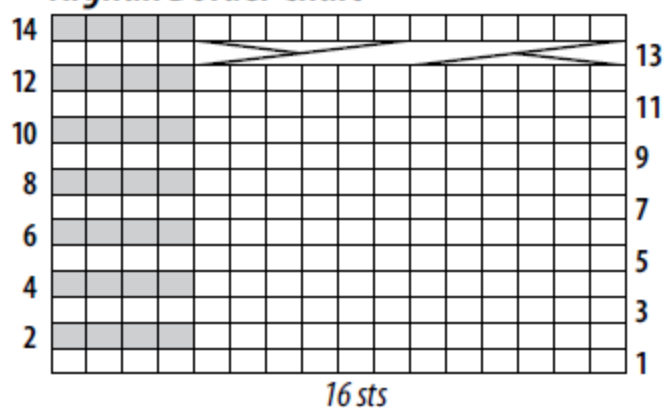
IN OTHER WORDS

6/6 RC Sl 6 to cn, hold to back, k6; k6 from cn.

WRAP ST & TURN (W&T) With yarn in back, sl 1 to RH needle, bring yarn to front between needles, sl st back to LH needle, turn work.

HIDE WRAPS (HW) K 3 wraps tog with st on LH needle.

Afghan Border Chart



Afghan Corner Chart

