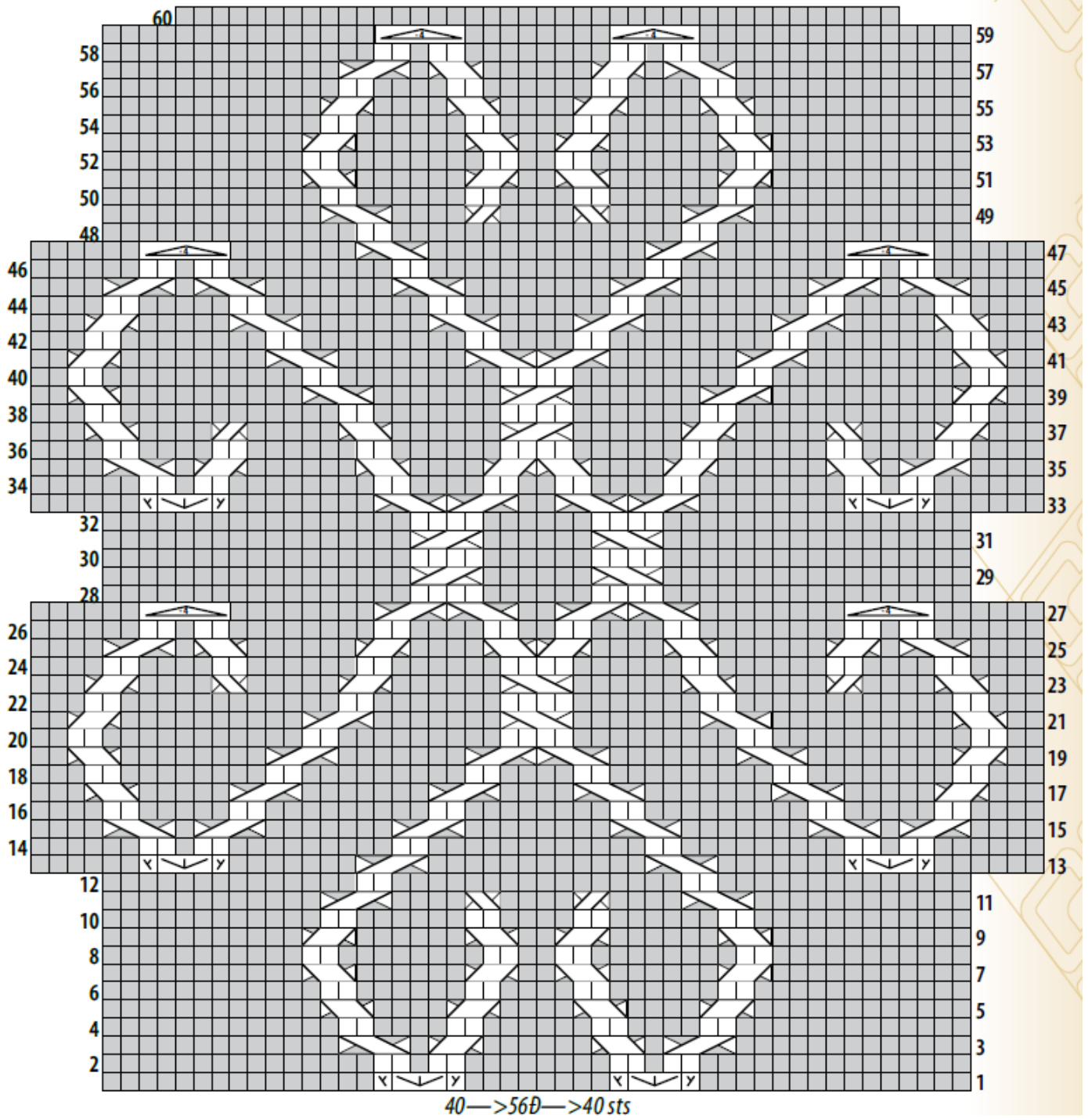
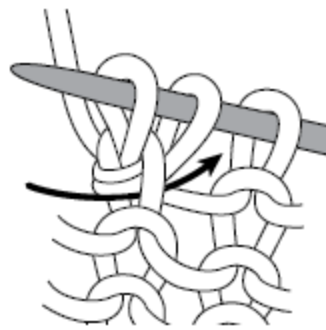


Dagmars Berztiss - Pages 48 & 49 - #11



- K on RS, p on WS*
- P on RS, k on WS*
- M1 left-slanting (M1L)*
- M1 right-slanting (M1R)*
- Inc 2*
- Dec 4*
- 1/1 RC (on RS and WS)*
- 1/1 LC (on RS and WS)*
- 2/1 RPC*
- 2/1 LPC*
- 2/2 RC*
- 2/2 LC*
- 2/2 RPC*
- 2/2 LPC*



**INC 2** K into back and front of st, then insert LH needle behind the vertical strand that runs between 2 sts just made (see illustration) and k strand tbl.

**DEC 4** With yarn in front, sl 3, \*pass 2nd st on RH needle over first (center) st, sl center st back to LH needle and pass 2nd st over it\*, sl center st back to RH needle; rep from \* to \* once more, p center st.

**1/1 RC (ON A RS ROW)** K 2nd st on LH needle, then k first st, drop both sts off needle.

**(ON A WS ROW)** P 2nd st on LH needle, then p first st, drop both sts off needle.

**1/1 LC (ON A RS ROW)** With RH needle behind work, k 2nd st through back loop (tbl), then k in front of first st, drop both sts off needle. **(ON A WS ROW)** With RH needle behind work, p 2nd st tbl, then p in front of first st, drop both sts off needle.

**2/1 RPC** Sl 1 to cn, hold to back, k2; p1 from cn.

**2/1 LPC** Sl 2 to cn, hold to front, p1; k2 from cn.

**2/2 RC** Sl 2 to cn, hold to back, k2; k2 from cn.

**2/2 LC** Sl 2 to cn, hold to front, k2; k2 from cn.

**2/2 RPC** Sl 2 to cn, hold to back, k2; p2 from cn.

**2/2 LPC** Sl 2 to cn, hold to front, p2; k2 from cn.