

## Susan Rainey – Pages 50 & 51, Block 19

### Note

Square is worked first, then mini sweater is worked and sewn to square.

### Square

With size 4mm (US 6) needles, cast on 57 sts. Work 3 ridges, inc 4 sts evenly along last (WS) row—61 sts. **Beg center of square pat: Row 1** (RS) K3, \*p1, k1; rep from\* to last 4 sts, p1, k3. **2 and 3** Rep row 1. **4** (WS) K3, p1, k1, p to last 5 sts, k1, p1, k3. **5** K3, p1, k to last 4 sts, p1, k3. Rep rows 4 and 5 until piece measures 11" from beg, end with pat row 4. Work rows 1–3 once. Work 3 ridges, dec 4 sts evenly across first row—57 sts. Bind off.

### Mini Sweater

#### Body

With size 3.5mm (US 4) needles, cast on 39 sts. Work 5 rows in k1, p1 rib. **Next row** (WS) Purl, inc 4 sts evenly across—43 sts. Change to size 3.75mm (US 5) needles. **Beg Charts A, B and C: Row 1** (RS) Work Chart A over 5 sts, Chart B over 9 sts, Chart C over 15 sts, Chart B over 9 sts, Chart A over 5 sts. Cont in chart pats as established until piece measures 5" from beg, end with a WS row.

#### Shape armholes

Dec 1 st each side every RS row 3 times—37 sts. Work even until armhole measures 2¾, end with chart row 4.

#### Shape neck

**Next row** (RS) Work 13 sts, join 2nd ball of yarn and bind off center 11 sts, work to

end. Working both sides at same time, bind off from each neck edge 2 sts twice—9 sts each side. Work 3 rows in St st. Bind off. Fold St st portion of each shoulder to WS and tack down.

### Right Sleeve

With size 3.5mm (US 4) needles, cast on 11 sts. Work 5 rows in k1, p1 rib. **Next row** (WS) Purl, inc 1 st—12 sts. Change to size 3.75mm (US 5) needles. **Beg Charts A and B: Row 1** (RS) Work Chart A over 7 sts, work first 5 sts of Chart B. Cont in chart pats as established, inc 1 st at beg of RS rows (working incs into Chart A) every 4th row 4 times—16 sts. Work even until piece measures 3¾ from beg, end with a WS row.

#### Shape cap

Dec 1 st at beg of every RS row and end of every WS row until 3 sts rem. Bind off.

### Left Sleeve

Work to correspond to right sleeve, reversing pats and shaping. Work chart pats as foll: **Beg Charts A and B: Row 1** (RS) Work last 5 sts of Chart B, work Chart A over 7 sts. Work incs at end of RS rows. Work sleeve cap decs at end of RS rows and beg of WS rows.

### Finishing

Block pieces. Set in sleeves.

#### Neckband

With size 3.5mm (US 4) needles, pick up and k15 sts along neck edge. Work 3 rows in k1, p1 rib. Bind off purlwise.

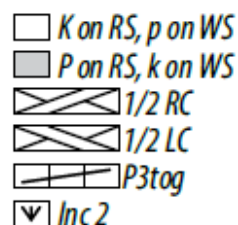
Sl st sweater to square, using photo as guide. Leave neck and cuff edges open. ◡

## IN OTHER WORDS

**1/2 RC** Sl 2 to cn, hold to back, k1; k2 from cn.

**1/2 LC** Sl 1 to cn, hold to front, k2; k1 from cn.

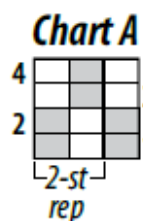
**INC 2** [K1, yo, k1] in a st.



### CHART A

OVER AN ODD # OF STS

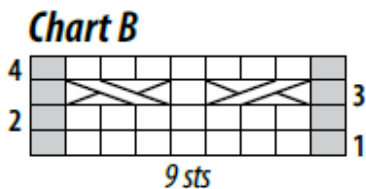
**Row 1** (RS) P1, \*k1, p1; rep from\*. **2** \*K1, p1; rep from\*, end k1. **3** Rep row 2. **4** Rep row 1. Rep rows 1–4 for Chart A.



### CHART B

OVER 9 STS

**Row 1** (RS) P1, k7, p1. **2 and 4** K1, p7, k1. **3** P1, 1/2 RC, k1, 1/2 LC, p1. Rep rows 1–4 for Chart B.



### CHART C

OVER A MULTIPLE OF 4 STS PLUS 3

**Rows 1 and 3** (RS) Purl. **2** \*P3tog, inc 2; rep from\*, end p3tog. **4** \*Inc 2, p3tog; rep from\*, end inc 2 in last st. Rep rows 1–4 for Chart C.

