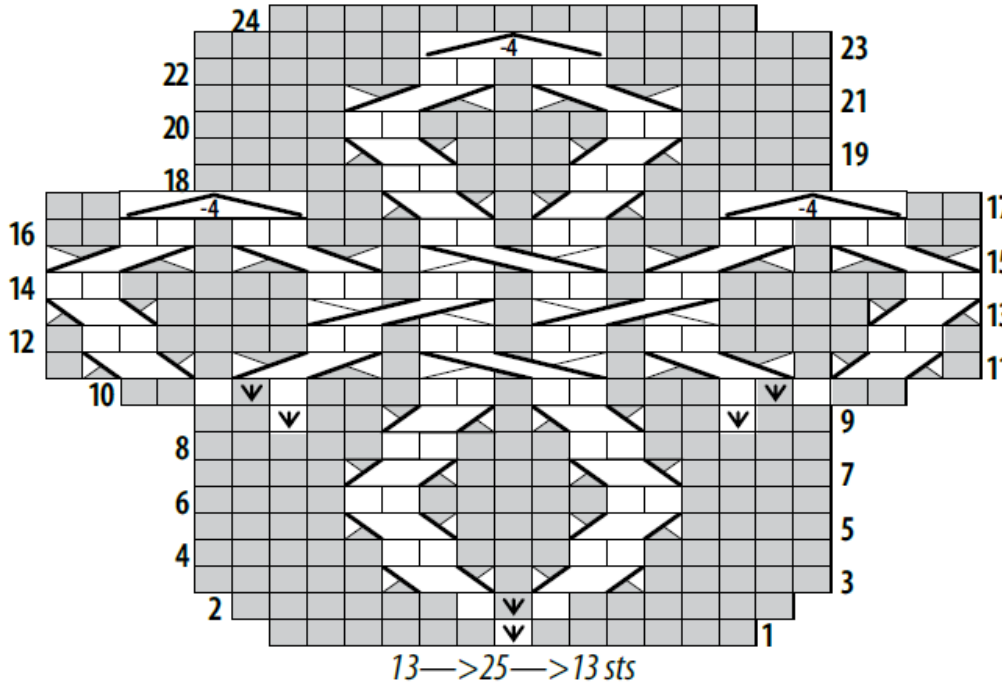
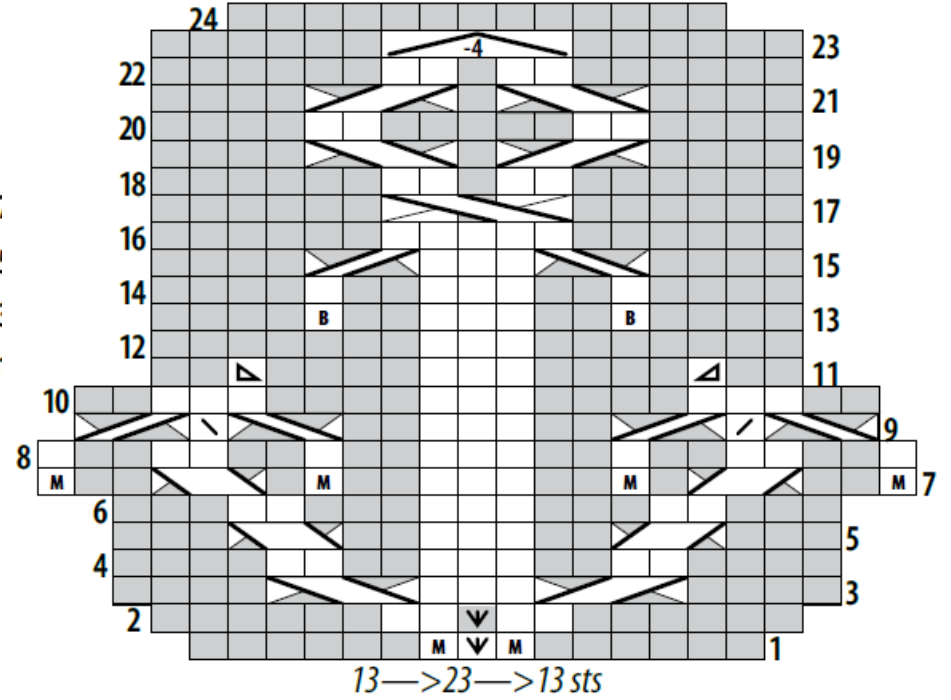


Vicki Sever - Pages 12 & 13 #5

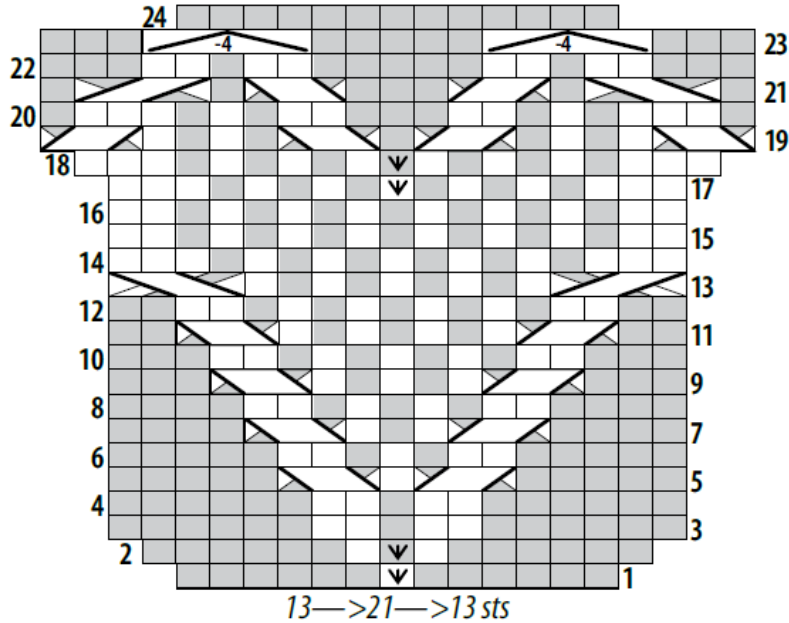
**Chart A**



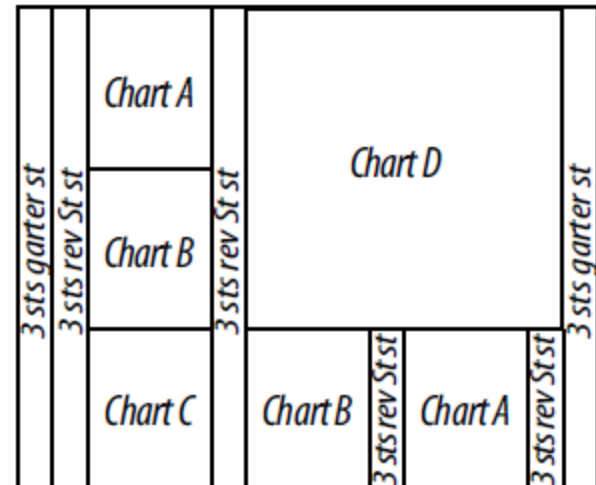
**Chart B**



**Chart C**



**Pat Arrangement**



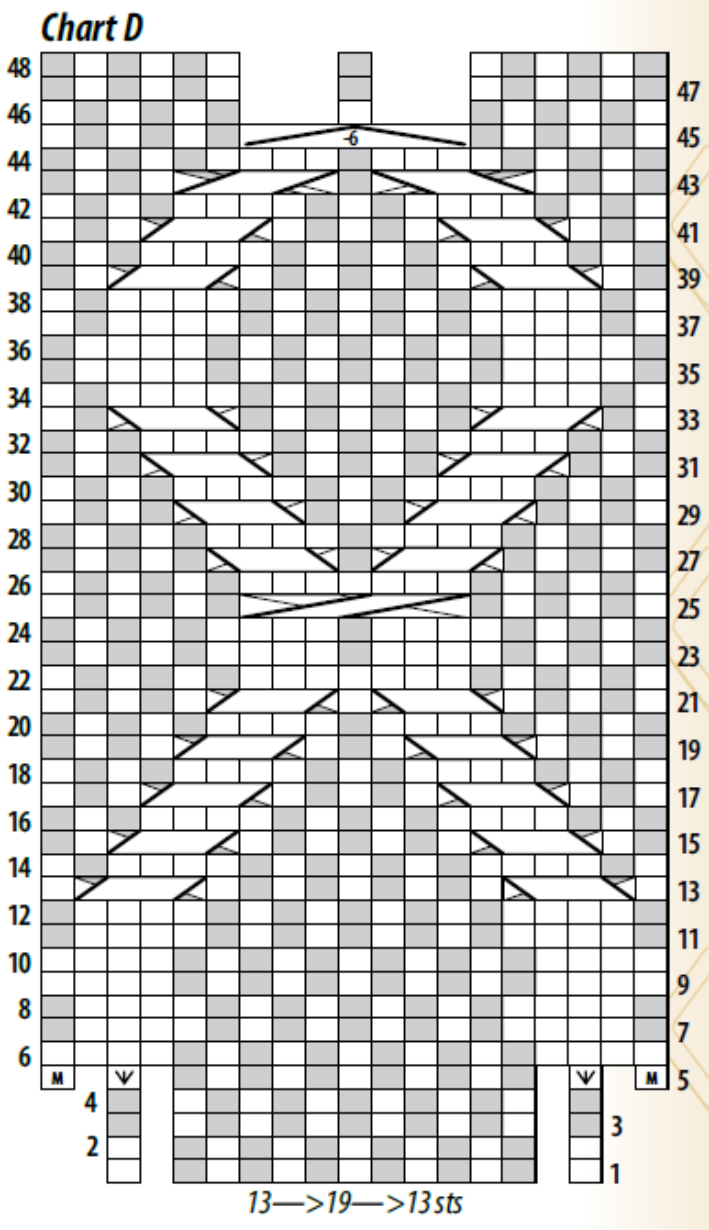
Cast on 57 sts, work 6 rows garter, last row is a wrong side, Knit 1 row  
 Next row (RS) k3, p to last 3, k3  
 Next row (WS) Knit  
 Begin with rows 1 of chart A, B and C

**MAKE BOBBLE (MB)** [(K1, p1) twice, k1] into a st, sl 2nd, 3rd, 4th, and 5th st, one at a time, over first st.

**INC 2 (ON RS)** K into back and front of a st, then insert LH needle into the vertical strand that runs between the 2 sts just made and k into back of this strand (see illustration, left). **INC 2 (ON WS)** [P1, yo, p1] into a st.

**DEC 4** Sl 3 knitwise, one at a time, to RH needle, \*pass 2nd st on RH needle over first (center) st; sl center st back to LH needle, pass 2nd st on LH needle over it\*, sl center st back to RH needle, work from \* to \* once more, p center st.

**DEC 6** Sl 4 knitwise, one at a time, to RH needle, \*pass 2nd st on RH needle over first (center) st; sl center st back to LH needle, pass 2nd st on LH needle over it\*, sl center st back to RH needle\*\*, work from \* to \*\* once more, then from \* to \* once, k center st.



**INC 2**

- K on RS, p on WS
- P on RS, k on WS
- ▧ K2tog
- ▨ Ssk
- ▩ SK2P
- K3tog
- Ⓜ Make 1 (M1)
- Ⓟ Make Bobble (MB)
- ▽ Inc 2 on RS
- ▽ Inc 2 on WS
- ▧ 1/2 RPC
- ▨ 1/2 LPC
- ▩ 2/1 RPC
- 2/1 LPC
- ▧ 2/2 RPC
- ▨ 2/2 LPC
- ▩ 2/2 KPRC
- 2/2 PKLC
- ▧ 3/1 RC
- ▨ 3/1 LC
- ▩ 3/1 RPC
- 3/1 LPC
- ▧ 3/2 KPRC
- ▨ 3/2 PKLC
- ▩ 2/1/2 RPC
- 2/1/2 LPC
- ▧ 3/1/3 RC
- ▨ -4 Dec 4
- ▩ -6 Dec 6