

Asset

Owner:

PSR:

Upstream MH:

Downstream MH:

	USMH	DSMH
Rim to Invert:	<input type="text"/>	<input type="text"/>
Rim to Grade:	<input type="text"/>	<input type="text"/>

Pipe Geometry:

Material:

Lining Method:

Coating Method:

Year Constructed:

Pipe Use:

Total Length:

Project

Project:

Work Order:

Customer:

PO Number:

Additional Info:

Inspection

Media Date/Time:

Surveyed By:

Reviewed By:

Camera Direction:

Purpose:

Technology:

Pre-Cleaning:

Date Cleaned:

Flow Control:

Length Surveyed:

Weather:

Location

Address:

Drainage Area:

Latitude:

Longitude:

Elevation:

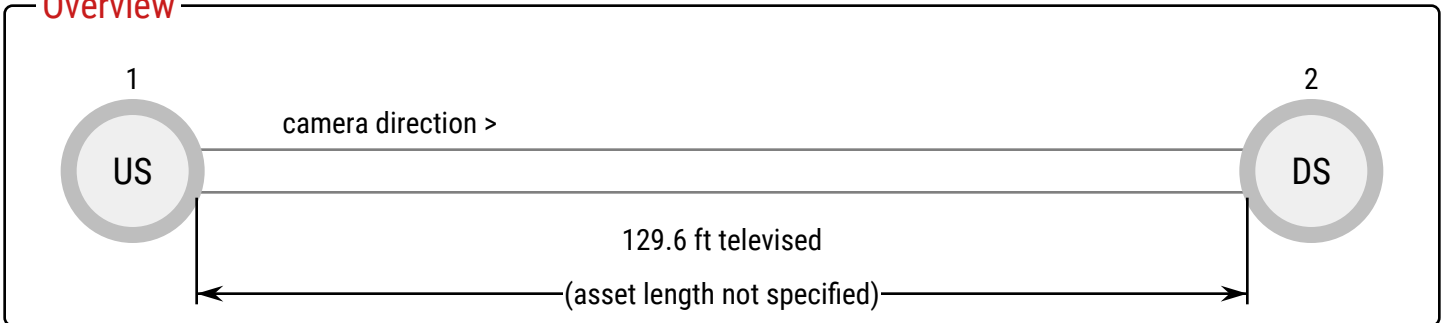
GPS Accuracy:

Location Code:

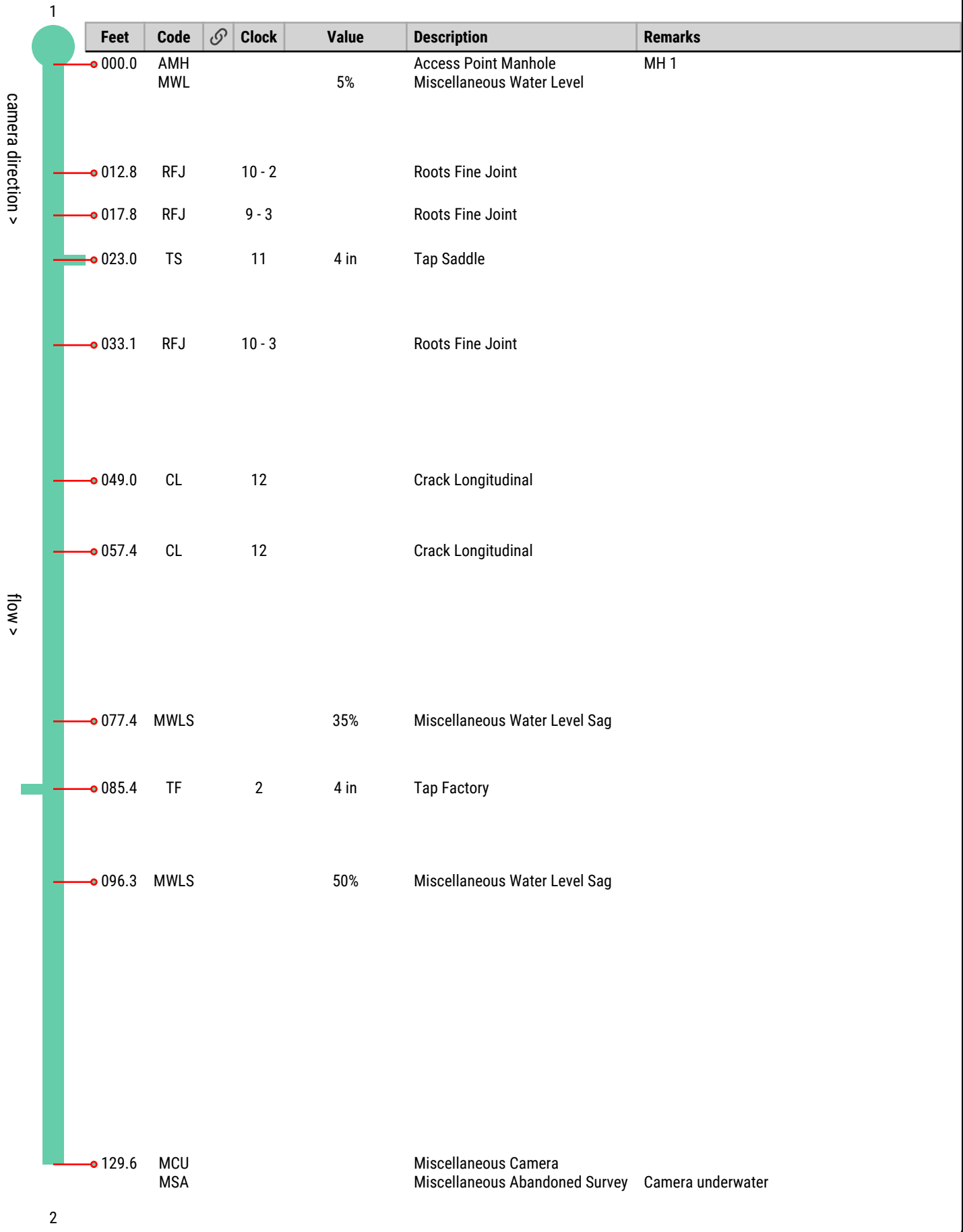
Ratings

	Structural	O & M	Overall
Quick:	<input type="text" value="3222"/>	<input type="text" value="4113"/>	<input type="text" value="4132"/>
$\sum_{i=1}^5 SG_i$ Pipe Rating:	<input type="text" value="10"/>	<input type="text" value="7"/>	<input type="text" value="17"/>
Rating Index:	<input type="text" value="2.5"/>	<input type="text" value="1.8"/>	<input type="text" value="2.1"/>
Consequence of Failure:	<input type="text"/>		

Overview



Observations



Snapshots



Access Point Manhole at 000.0 ft | MH 1



Miscellaneous Water Level at 000.0 ft



Roots Fine Joint at 012.8 ft, 10 - 2 o'clock



Roots Fine Joint at 017.8 ft, 9 - 3 o'clock



Tap Saddle at 023.0 ft, 11 o'clock



Roots Fine Joint at 033.1 ft, 10 - 3 o'clock



Crack Longitudinal at 049.0 ft, 12 o'clock



Crack Longitudinal at 057.4 ft, 12 o'clock

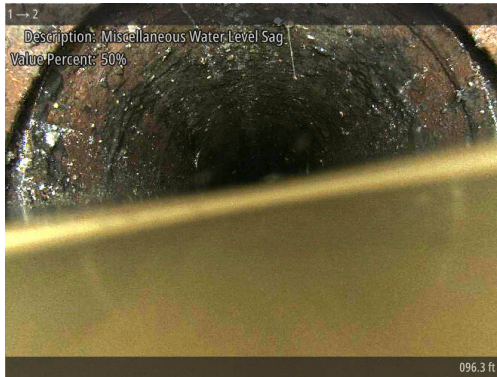
Snapshots



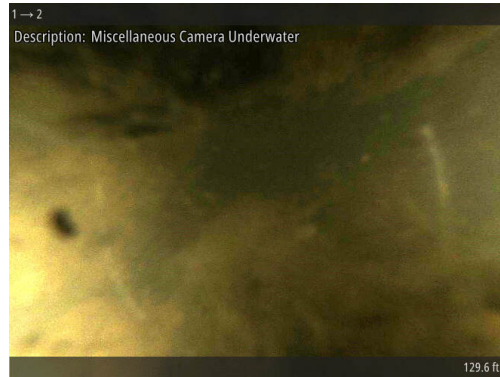
Miscellaneous Water Level Sag at 077.4 ft



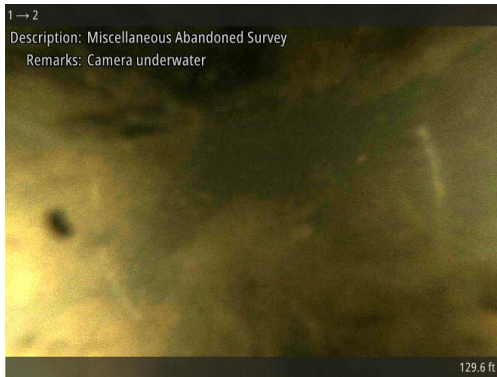
Tap Factory at 085.4 ft, 2 o'clock



Miscellaneous Water Level Sag at 096.3 ft



Miscellaneous Camera Underwater at 129.6 ft



Miscellaneous Abandoned Survey at 129.6 ft |
Camera underwater