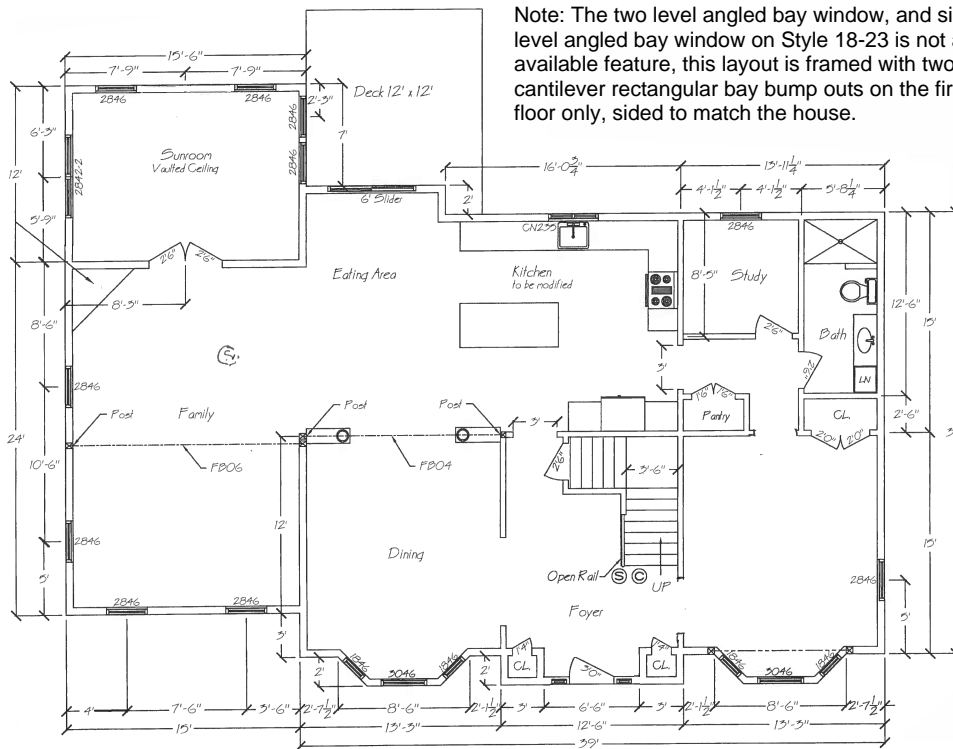


HOUSE # 18-23

3,400 SQ FT



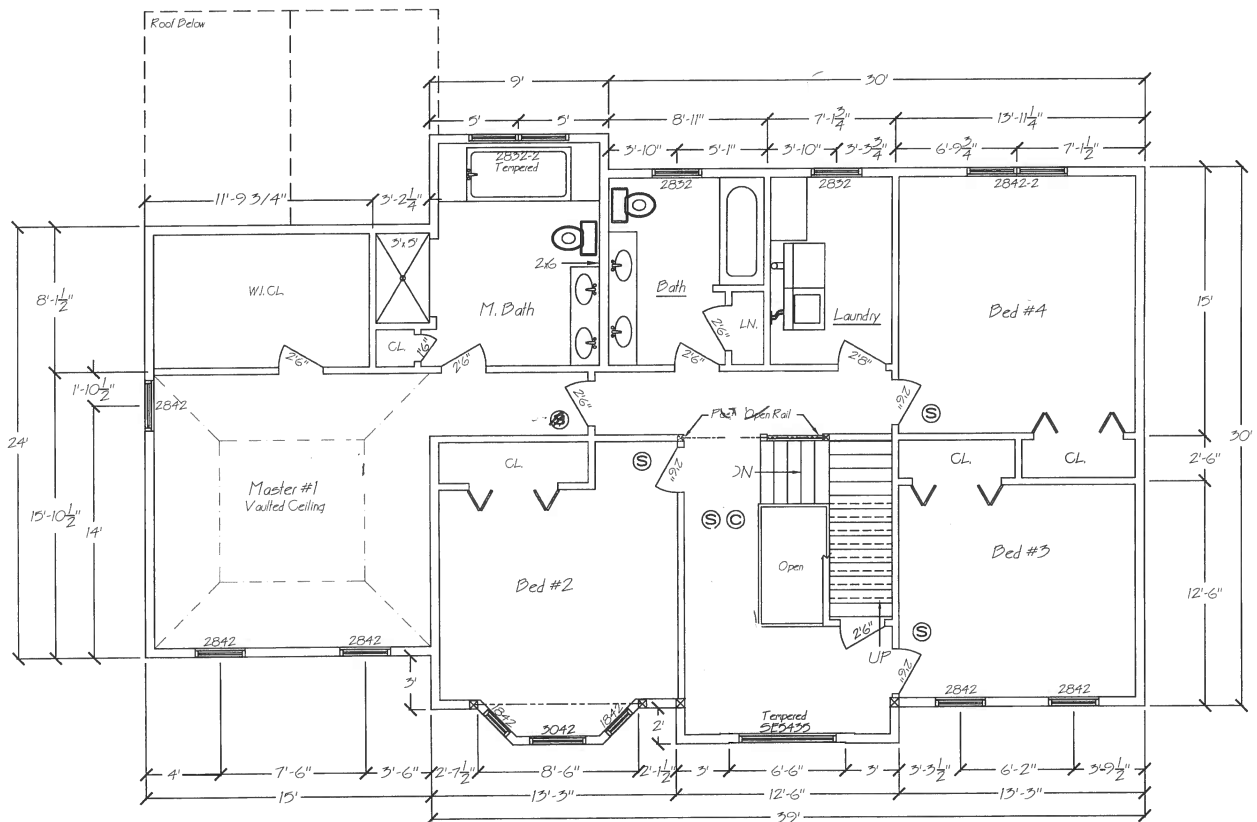
Note: The two level angled bay window, and single level angled bay window on Style 18-23 is not an available feature, this layout is framed with two cantilever rectangular bay bump outs on the first floor only, sided to match the house.



*The floor plans are for marketing purposes only. The builder reserves the right to make any changes without notice.

HOUSE # 18-23

3,400 SQ FT



Note: The two level angled bay window, and single level angled bay window on Style 18-23 is not an available feature, this layout is framed with two cantilever rectangular bay bump outs on the first floor only, sided to match the house.

