

FRIDAY MARCH 20, 2026

**Lust Farms**  
*red angus*

AT THE RANCH | CYPRESS COUNTY, AB | 1 PM



**DLM|S**  
Direct Livestock Marketing Systems

8<sup>TH</sup> ANNUAL SALE

2 Year Old **RED ANGUS** Bull Sale

FEATURING A SELECT GROUP OF YEARLINGS

# 2 YEAR OLD *RED ANGUS* BULL SALE

## FEATURING A SELECT GROUP OF YEARLING BULLS

**FRIDAY, MARCH 20, 2026 | SALE AT 1:00 PM**  
**AT THE RANCH, CYPRESS COUNTY, ALBERTA**

*Join us for LUNCH prior to the sale!*

Welcome to our 8th Annual Bull sale on the farm. We'd like to begin by expressing our sincere gratitude. Thank you for coming out, looking and bidding on our bulls. Your confidence in our program is appreciated.

Our bull development program begins the day they are born! Our calves receive **no creep feed**, and are raised by their mother grazing crested wheat grass and native pastures until weaning the first part of October.

At weaning, the calves receive a balanced high roughage TMR of hay/silage/bull developer ration/mineral. The bulls are then summered on grass as yearlings until early fall, when they receive a similar balanced high roughage TMR ration until sale time.

We believe in developing bulls with longevity in mind and as two year olds they are ready to go out and breed a full compliment of cows right out of the gate!

The bulls will be sorted and penned for viewing sale day. Join us for a live auction video sale hosted by DLMS. For **online bidding**, sign up with DLMS early to give time for bidder approval. Contact one of the sale day numbers to **bid over the phone**. And, for **Sight Unseen Purchases**, please give Lust Farms, Perlich, or Castlerock a call.

We have a great selection of sound, athletic bulls that are built to last. Whether your focus is growth, calving ease, or long term replacement value, this offering delivers balanced real world genetics that will strengthen your program.



Neal, Sheila, Ethan & Eric Lust

11405 Range Road 42  
Cypress County, AB T1B 0K6

Home (403) 527-0545

Neal's cell (403) 504-9821

Sheila's cell (403) 952-7222

**Catalogue and videos online at [www.lustfarms.ca](http://www.lustfarms.ca)**

### REPEAT CUSTOMER PROGRAM

Receive a sale credit for your next purchase!

Coupon is calculated after five bulls are purchased and based on 5% of the average purchase price.



### DIRECTIONS TO THE RANCH

From Medicine Hat, travel East on Trans Canada Highway #1 to Range Road 40  
Turn right on Range Road 40 and travel 3.5 miles to Township Road 114  
Turn right on Township Road 114 and travel 2 miles to Range Road 42  
Turn right onto Range Road 42 into our yard

**FIND US ON GOOGLE MAPS BY SEARCHING "LUST FARMS"**



# SALE CONTACTS

Lust Farms  
red angus

## LUST FARMS:

Neal Lust (403) 504-9821  
Sheila Lust (403) 952-7222



## CASTLEROCK MARKETING:

Shane Castle (306) 741-7485  
Mark Forsyth (306) 784-7844



## SALE STAFF:

Bob Perlich (403) 382-7800  
Darcy Moorhead (403) 635-0308  
Scott Munsch (403) 548-4978

## CAN'T MAKE THE SALE?

**Watch, Bid & Buy Online**

**To view & bid** visit [www.dlms.ca](http://www.dlms.ca), log-in with your username and password or sign-up for your free user account.

**BIDDERS** - click BUYER APPROVAL tab, select the sale you are interested in bidding at and click sign up.

**For more information call:**

**Mark Shologan 780-699-5082 or Purebred Team 780-991-3025**

**DLMS**  
[www.dlms.ca](http://www.dlms.ca)  
Direct Livestock Marketing Systems



## WELCOME FROM CASTLEROCK

Lust Farms is bringing forward a set of bulls like never before, the genetic needle keeps moving forward in their quest to fine tune the herd. Carefully and cautiously the genetic blue print is analyzed to enhance the predictability and advancement of the cattle. A new, exciting sire group for this year is the Monsoon group and they exemplify the direction to keep the balance in the breeding.

As always the bulls are developed in a modest tradition with the emphasis placed on exercise and longevity for you the buyer. This set of bulls offers next level phenotype with all the basics, and most importantly, ensuring the "typical" Angus cow comes through on the other side as well, as she is the queen of the pasture!

You will also notice three yearling bulls offered in this year's sale. The herd has transitioned to an earlier calving regime allowing for the transition to yearling bulls being offered while maintaining the Two Year Old bull program. Also on offer are a few "ET" bulls born through embryo packages purchased and embryo transplant utilized to enlarge the productive, desirable cow families that we can never have enough of.

Stop by Lust Farms prior to sale day to go through on a guided tour of the herd and the offering to ensure your needs are looked after in the search for your newest genetics for your herd.

If we can be of assistance in regards to the sale, feel welcome to give us a call or text to discuss the offering.

See you sale day!  
Shane Castle

## WELCOME TO THE LUST FARMS BULL SALE!

The Perlich family and staff are honoured to conduct the Lust Farms 8<sup>th</sup> Annual bull sale at their ranch. The Lust Family is truly devoted to their Red Angus cattle operation and have produced an outstanding set of Bulls, showcasing their overwhelming commitment to the Angus breed.

This family has been ranching since 1944 and their bulls are raised and conditioned with you, the producer, in mind. Their dedication, passion and diligence are evident in this year's lineup of two-year-olds and specially selected yearling bulls. They are ready to go to work right out of the gate.

Bid with confidence knowing that the quality genetics and longevity of these bulls will pay for years to come.

Respectfully,  
Management and Staff, Perlich Bros Auction Market

## CALVING EASE LEVELS

We are often asked which bull will work on heifers so we have implemented a scale based on the bull's BW, his physical characteristics and his dam's past calving history. This is only a guideline and you must take into account your herd and the size of your heifers at calving.

- 1 Recommended for mature cows only, not recommended for heifers
- 2 Recommended for use on cows, 2nd calvers or large framed heifers
- 3 Recommended for heifers, should be easy calving with minimal assistance required
- 4 Recommended as a sleep easy heifer bull





BW	75
205	704
CE	5.0
BW	-1.0
WW	50
YW	85
MCE	6.0
MILK	32

1

RED LFA **CONFIDENCE 11N**

EOL 11N | JAN 14 2025 | Reg# 2449434

RED COCKBURN CONFIDENCE 3010

RED YCR FANTASY 2380L

RED RREDS COPPER G929  
RED COCKBURN CORA 1066  
RED WILBAR CRACKERJACK 73F  
RED YCR FANTASY 1447B

- **YEARLING** - Heifer bull with big performance! Very correct and smooth patterned bull
  - In dam purchase from Yarrow Creek dispersal bred to the \$30,000 Confidence 3010 bull
- WEANING INDEX 107**      Calving Ease Level 4

BW 100 ET

205 727

CE -8.0

BW 3.9

WW 53

YW 85

MCE -2.0

MILK 25



2

RED SHAG RAGE 115

RED BCC RENEE 44F

RED ARO MR 906  
RED SHAG ANASCO 8111

RED TER-RON HOT SHOT 10B  
RED BCC RENEE 60T

RED LFA **RAGE 18N**

LFA 18N | FEB 11 2025 | Reg# 2426280

- **YEARLING** - ET Bull with a stacked pedigree in this Shag Rage son! Paternal Brother was Reserve Grand Champion Red Angus Bull at Agribition in 2025
  - Renee 44F is a prolific donor cow, mother of Brylor OTM Resolution
- WEANING INDEX 100**      Calving Ease Level 1

**YEARLINGS**



BW 88  
205 682  
CE 3.0  
BW 2.3  
WW 54  
YW 94  
MCE 8.0  
MILK 23



3

RED LFA **NORRIS 23N**

LFA 23N | FEB 17 2025 | Reg# 2417174

**RED SIX MILE MONSOON 332K**

RED W SUNRISE TYPHOON 604H  
RED SIX MILE MS PATHY 610C

**RED LFA IONA 147J**

RED SIX MILE BADGER 529G  
RED LFA IONA 703F

- **YEARLING** - Eye catching Monsoon son sure to add lots of length and style to his progeny
  - His dam is a long bodied Badger daughter with a great udder
- WEANING INDEX 102**      Calving Ease Level 2

***FROM THE DESK OF DR. DAYMAN,***

Bull selection is the primary driver of calf crop genetics, making it essential to choose a herd sire aligned with your production goals. Lust Farms maintains a robust health program to ensure their bulls are ready for work.

The breeding herd receives comprehensive preventative care, including 5-way viral (Bovishield Gold FP5 VL5) and 8-way clostridial (Covexin Plus) vaccinations, which safeguard both the cow herd and enhance calf immunity.

Calves are administered a 5-way viral vaccine with Mannheimia hemolytica (Bovishield Gold One Shot) and an 8-way clostridial vaccine with tetanus (Covexin Plus) at branding. Bulls selected for the program receive additional footrot (Fusogard), viral, and clostridial boosters at weaning.

This health protocol complements Lust Farms' practical nutrition strategy, supporting structural soundness and longevity. Combined with careful selection for genetics, conformation, and disposition, Neal & Sheila offer an outstanding lineup of bulls.

Sincerely,

Dr. Krista Dayman  
(403) 878-4545

**Badlands**  
VETERINARY  
SERVICES



**YEARLINGS**





BW 85

205 643

CE 5.0

BW 0.9

WW 54

YW 87

MCE 7.0

MILK 23

4

## RED LFA **INFLAME 12M**

LFA 12M | FEB 4 2024 | Reg# 2372851

RED LWNBRG INFRARED 47H

RED LWNBRG ELECTRIC 4D  
RED LWNBRG CROSS OVER 150D

RED LFA CHERUB 427C

RED SIX MILE HAMPTON 612A  
RED LFA CHERUB 326A

- Why mess with a good thing? We've mated 427C to Infrared for 3 years now and the results are always the same. 720+ pound weaning weights, eye appealing bull calves!
- Last year's bull was a sale highlight to Ivan Schlaht and there's another one in this year's yearling pen!
- If you're looking for consistency and proven genetics, give 12M a hard look. **WEANING INDEX 100** Calving Ease Level 2

38L - FUEL BROTHER

BW 85 ET

205 685

CE -9.0

BW 4.5

WW 53

YW 84

MCE -1.5

MILK 31



- ET Bull backed by the great Renee 44F cow
- One of our favorites we have enjoyed watching mature from birth through yearling and now as a 2 Year Old
- Super quiet on picture day, loved posing for the camera!

**WEANING INDEX 100**

Calving Ease Level 1

5

## RED LFA **RIDDLER 20M**

LFA 20M | FEB 12 2024 | Reg# 2381369

RED TER-RON RIDDLER 57F

RED U-2 RENOWN 193C  
RED KENRAY BARONESS 13C

RED BCC RENEE 44F

RED TER-RON HOT SHOT 10B  
RED BCC RENEE 60T

**2 YEAR OLDS**



6

RED LFA **SELKIRK 16M**

LFA 16M | FEB 8 2024 | Reg# 2372853

RED TOWAW SELKIRK 406J

RED HAMCO KINGMAN 465F  
RED TOWAW MONIQUE 410E

RED LFA CHERUB 734F

RED SIX MILE BRANDIN IRON 462C  
RED LFA CHERUB 434C

BW	205d	CE	BW	WW	YW	MCE	MILK
90	643	-2.0	3.3	49	88	3.0	22

- Strong, sound footed bull
- Dam is a Brandin Iron daughter who brings in a big calf every year
- Lots of maternal strength in this Cherub cow family

WEANING INDEX 104

Calving Ease Level 1



7

RED LFA **TITAN 23M**

LFA 23M | FEB 12 2024 | Reg# 2372860

RED SIX MILE BADGER 529G

RED HALL'S BARRY 040C  
RED HALL'S MISS LARK 504C

RED LFA FOXYLADY 288A

RED SIX MILE HAVOC 296Y  
RED PIRO FOXYLADY 979W

BW	205d	CE	BW	WW	YW	MCE	MILK
100	724	-8.0	5.5	57	99	2.0	22

- A high performing bull out of the oldest cow on the ranch who's currently 13 years old and as structurally sound as they come
- One of the heavier bulls at both weaning & yearling

WEANING INDEX 112

Calving Ease Level 1

8

RED LFA **SELKIRK 31M**

LFA 31M | FEB 15 2024 | Reg# 2372879

RED TOWAW SELKIRK 406J

RED HAMCO KINGMAN 465F  
RED TOWAW MONIQUE 410E

RED LAURON BLACKBIRD 184E

RED KBJ MAUI 904C  
RED LAURON BLACKBIRD 94A

BW	205d	CE	BW	WW	YW	MCE	MILK
94	705	-5.0	3.8	58	99	2.0	26

- Top 8% in WW & YW EPDs
- Smooth made cow bull that'll add pay weight to your steers

WEANING INDEX 109

Calving Ease Level 1

9

RED LFA **INFLAME 17M**

LFA 17M | FEB 10 2024 | Reg# 2372854

RED LWNBRG INFRARED 47H

RED LWNBRG ELECTRIC 4D  
RED LWNBRG CROSS OVER 150D

RED U2 ENVIOUS 15G

RED HOWE HESSTON 212C  
RED U-2 ENVIOUS 147X

BW	205d	CE	BW	WW	YW	MCE	MILK
86	651	5.0	1.2	54	89	8.0	21

- The Infrared sons all bring consistent birth weights and above average performance
- Great foot under this bull
- 15G was purchased at the U2 dispersal and her dam was one of the highlight cows who garnered extra attention that day

WEANING INDEX 101

Calving Ease Level 2



2 YEAR OLDS



10

RED LFA **INFLAME 21M**

LFA 21M | FEB 12 2024 | Reg# 2372858

RED LWNBRG INFRARED 47H

RED LWNBRG ELECTRIC 4D  
RED LWNBRG CROSS OVER 150D

RED LFA FOXYLADY 257K

RED SIX MILE BADGER 529G  
RED LFA FOXYLADY 644E

BW	205d	CE	BW	WW	YW	MCE	MILK
83	678	0.0	3.6	63	106	6.0	21

- Big framed bull that's performed well from birth to sale time
- Ranked #2 at weaning for his contemporary group
- Dark cherry red Infrared son

WEANING INDEX 111

Calving Ease Level 2



11

RED LFA **AVIATOR 38M**

EOL 38M | FEB 18 2024 | Reg# 2373734

RED RAINBOW PILOT 31J

RED U2 HEADSTRONG 273G  
RED RAINBOW LARKABA 47G

RED LFA GENIE 263K

RED SIX MILE BADGER 529G  
RED LAURON GENIE 117E

BW	205d	CE	BW	WW	YW	MCE	MILK
72	608	6.0	0.1	48	86	6.0	25

- Heifer bull! Moderate framed calving ease bull that has a nice pattern to him
- Dam is a Genie cow whose mother (117E) entered our flush program in 2025
- Proven maternal pedigree on both sides

WEANING INDEX 96

Calving Ease Level 3



12

RED LFA **INFLAME 44M**

LFA 44M | FEB 20 2024 | Reg# 2373297

RED LWNBRG INFRARED 47H

RED LWNBRG ELECTRIC 4D  
RED LWNBRG CROSS OVER 150D

RED LFA INDIGO 222K

RED SIX MILE BADGER 529G  
RED LFA INDIGO 509D

BW	205d	CE	BW	WW	YW	MCE	MILK
88	663	1.0	3.3	60	102	5.0	23

- A big stout Infrared son with some stature to him
- A real eye catching bull who stands out in the pen

WEANING INDEX 102

Calving Ease Level 1



2 YEAR OLDS





13

## RED LFA **FRANCHISE 35M**

LFA 35M | FEB 16 2024 | Reg# 2381357

- ET Franchise bull
- Long bodied and smooth shouldered
- Pedigree is backed by the Reba 49D cow family
- This bull has phenotype and eye appeal and will sire just that!

**WEANING INDEX 99**

Calving Ease Level 1

14

## RED LFA **WIZARD 45M**

LFA 45M | FEB 20 2024 | Reg# 2373298

**RED JEWEL MERLIN 121K**

RED JEWEL MERLIN 133H  
RED JEWEL CHRISTINA 12G

**RED LFA BAMBI 203K**

RED LAURON FONZIE 109F  
RED LFA BAMBI 975H

BW	205d	CE	BW	WW	YW	MCE	MILK
75	606	9.0	0.1	45	81	8.0	21

- Moderate framed heifer bull who ranks in the top 9% for CE EPD
- Very similar to Lot 15 in type and style

**WEANING INDEX 99**

Calving Ease Level 4



**RED BRYLOR OTM FRANCHISE 149F**

RED 9 MILE FRANCHISE 6305  
RED BRYLOR OTHC REBA 49D

**RED J.J. MISS DESIGN 2U**

RED K-C MR "E" 92N  
RED RIVERDALE ANN 571N

BW	205d	CE	BW	WW	YW	MCE	MILK
90 ET	687	-2.5	3.2	50	89	-3.0	26

15

## RED LFA **WIZARD 49M**

LFA 49M | FEB 22 2024 | Reg# 2373302

**RED JEWEL MERLIN 121K**

RED JEWEL MERLIN 133H  
RED JEWEL CHRISTINA 12G

**RED LFA GAMMA 271K**

RED SIX MILE BADGER 529G  
RED GOAD GAMMA 237'19

BW	205d	CE	BW	WW	YW	MCE	MILK
73	662	3.0	1.9	57	97	6.0	21

- Moderate BW bull out of a first calf heifer
- Attractive Birth to Weaning spread

**WEANING INDEX 105**

Calving Ease Level 3



**2 YEAR OLDS**



16

RED LFA **TORRENT 50M**

LFA 50M | FEB 23 2024 | Reg# 2373303

RED SIX MILE MONSOON 332K

RED W SUNRISE TYPHOON 604H

RED SIX MILE MS PATHY 610C

RED LFA FANCY 157J

RED SIX MILE UPPER CUT 209C

RED LFA FANCY 673E

BW	205d	CE	BW	WW	YW	MCE	MILK
83	668	2.0	2.5	52	87	8.0	23

- The Monsoon bloodlines continue to impress us with their moderate birth weights and ability to grow
- Good footed bull with great structure under him

WEANING INDEX 104

Calving Ease Level 2



17

RED LFA **WIZARD 58M**

LFA 58M | FEB 27 2024 | Reg# 2373310

RED JEWEL MERLIN 121K

RED JEWEL MERLIN 133H

RED JEWEL CHRISTINA 12G

RED LFA CHERUB 259K

RED LAURON FIRECRACKER 58F

RED LFA CHERUB 427C

BW	205d	CE	BW	WW	YW	MCE	MILK
88	705	4.5	3.7	60	102	5.5	25

- One of the framier and heaviest Merlin bulls in the offering
- Should make some attractive females

WEANING INDEX 116

Calving Ease Level 2

**Joe McLean - Beef Consultant**

126E Canal Garden, Strathmore, AB

phone: 1 (833) 210-8100 ext227

mobile: 1 (403) 393-3302

**2 YEAR OLDS**





18

BW 87

205 672

CE 1.0

BW 2.9

WW 53

YW 96

MCE 3.0

MILK 20

## RED LFA **TITAN 53M**

LFA 53M | FEB 25 2024 | Reg# 2373306

RED SIX MILE BADGER 529G

RED LFA FANCY 735F

RED HALL'S BARRY 040C  
RED HALL'S MISS LARK 504C

RED SIX MILE BRANDIN IRON 462C  
RED LFA FANCY 176Y

- This Badger son has had **HERD BULL** written all over him since birth. Loads of eye appeal combined with a great disposition
- 53M will leave you with a great set of steers and a pen of replacement heifers that'll have the neighbors looking twice

**WEANING INDEX 105**

Calving Ease Level 2

BW 87

205 731

CE 3.0

BW 2.7

WW 55

YW 94

MCE 7.0

MILK 26



19

RED SIX MILE MONSOON 332K

RED LFA MARIA 159J

RED W SUNRISE TYPHOON 604H  
RED SIX MILE MS PATHY 610C

RED MAC REDEMPTION 106D  
RED GOAD MARIA 113'14

RED LFA **TORRENT 65M**

LFA 65M | MAR 3 2024 | Reg# 2373315

- Big time performance cow bull with a desirable 87 pound BW
- Level topped and dark all around, Lot 19 is structurally correct and stands on a nice dark hoof

**WEANING INDEX 115**

Calving Ease Level 2

**2 YEAR OLDS**



**20****RED LFA TORRENT 64M**

LFA 64M | MAR 3 2024 | Reg# 2373314

- **HERD BULL PROSPECT**
- Elite calving ease option out of Monsoon and an eye catching Redemption daughter!
- Moderate framed, sleep all night heifer bull with extra growth and style

**WEANING INDEX 91**

Calving Ease Level 4

**RED SIX MILE MONSOON 332K****RED LFA INDIGO 115J**

BW	205d	CE	BW	WW	YW	MCE	MILK
70	583	9.0	0.0	38	69	10.0	22

RED W SUNRISE TYPHOON 604H  
RED SIX MILE MS PATHY 610CRED MAC REDEMPTION 106D  
RED LFA INDIGO 313A**21****RED LFA TITAN 67M**

LFA 67M | MAR 5 2024 | Reg# 2373316

**RED SIX MILE BADGER 529G****RED LFA INDIGO 624E**RED HALL'S BARRY 040C  
RED HALL'S MISS LARK 504C  
RED LAURON BEDROCK 30B  
RED LFA INDIGO 475C

BW	205d	CE	BW	WW	YW	MCE	MILK
95	728	-3.0	4.3	55	99	3.0	25

- Performance cow bull with a traditional Angus look to him
- Will add style and pounds to his progeny

**WEANING INDEX 113**

Calving Ease Level 1

**22****RED LFA AVIATOR 69M**

LFA 69M | MAR 9 2024 | Reg# 2373317

**RED RAINBOW PILOT 31J****RED LFA DELIGHT 948H**RED U2 HEADSTRONG 273G  
RED RAINBOW LARKABA 47GRED MAC REDEMPTION 106D  
RED LFA DELIGHT 461C

BW	205d	CE	BW	WW	YW	MCE	MILK
78	707	7.0	-0.4	49	85	5.0	26

- Here's a Pilot son with a ton of middle and length
- Lots of performance combined with a sleep easy calving recommendation

**WEANING INDEX 112**

Calving Ease Level 4

**2 YEAR OLDS**





23

## RED LFA **FALCON 74M**

LFA 74M | MAR 12 2024 | Reg# 2373321

- Moderate framed bull that is really put together right!
- Dam is an ELITE Upper Cut daughter who hits it out of the park every year

**WEANING INDEX 104**

Calving Ease Level 1

RED LFA FALCON 714F

RED LFA CHERUB 815G

RED LAZY MC GUNNER 137D  
RED LFA LAKME 320A

RED SIX MILE UPPER CUT 209C  
RED LFA CHERUB 434C

BW	205d	CE	BW	WW	YW	MCE	MILK
99	684	-5.0	4.7	48	81	3.0	22

24

## RED LFA **TITAN 70M**

LFA 70M | MAR 10 2024 | Reg# 2373318

RED SIX MILE BADGER 529G

RED HALL'S BARRY 040C  
RED HALL'S MISS LARK 504C

RED MF C55 LASSIE 86F

RED DKF RAZOR 55C  
RED BAR-E-L LASSIE 247W

BW	205d	CE	BW	WW	YW	MCE	MILK
92	658	-3.0	3.6	60	104	4.0	21

- Badger son with great feet
- Dam originates from Red Round Up Sale
- Outcross genetics with an outstanding EPD profile

**WEANING INDEX 101**

Calving Ease Level 1

25

## RED LFA **AVIATOR 72M**

LFA 72M | MAR 11 2024 | Reg# 2373319

RED RAINBOW PILOT 31J

RED U2 HEADSTRONG 273G  
RED RAINBOW LARKABA 47G

RED LFA DELILA 296A

RED SIX MILE INFINITI 245Y  
RED LFA NORMA 39U

BW	205d	CE	BW	WW	YW	MCE	MILK
80	688	4.0	0.8	55	93	3.0	26

- Lots of capacity and added frame in this Pilot son
- Longevity in his 11 Year old Dam
- Maternal brother was high seller in 2024 to Triangle S Cattle

**WEANING INDEX 109**

Calving Ease Level 2

**2 YEAR OLDS**



26

RED LFA **TITAN 73M**

EOL 73M | MAR 11 2024 | Reg# 2373728

RED SIX MILE BADGER 529G

RED HALL'S BARRY 040C  
RED HALL'S MISS LARK 504C

RED LFA LILLIAN 904H

RED MAC REDEMPTION 106D  
RED LFA LILLIAN 425C

BW	205d	CE	BW	WW	YW	MCE	MILK
85	621	0.0	3.3	42	80	4.0	21

- Well rounded bull that has some extra stretch
- Traditional Angus herd bull look

WEANING INDEX 96

Calving Ease Level 2

27

RED LFA **AVIATOR 75M**

LFA 75M | MAR 14 2024 | Reg# 2373323

RED RAINBOW PILOT 31J

RED U2 HEADSTRONG 273G  
RED RAINBOW LARKABA 47G

RED C.D. PRECISION 52A

RED BMB INDEED 256Y  
RED C.D. PRECISION M 39'11

BW	205d	CE	BW	WW	YW	MCE	MILK
92	693	-1.0	2.4	47	80	3.0	28

- Bigger framed Pilot son with a lot of length
- 11 year old dam who has a couple of daughters working in the herd

WEANING INDEX 107

Calving Ease Level 1



28

RED LFA **ALFONZO 87M**

LFA 87M | MAR 27 2024 | Reg# 2373338

- One of two Fonzie sons in the sale, proven CE in these genetics
- Great Heifer Bull prospect out of an Upper Cut dam
- Hairy!

WEANING INDEX 108

Calving Ease Level 4

RED LAURON FONZIE 109F

RED JEWEL TRADIN RIGHT 108D  
RED LAURON MISSY 81Y

RED LFA BAMBI 119J

RED SIX MILE UPPER CUT 209C  
RED LFA BAMBI 628E

BW	205d	CE	BW	WW	YW	MCE	MILK
72	678	11.0	-1.7	40	66	12.0	19

2 YEAR OLDS



29

RED LFA **TITAN 86M**

LFA 86M | MAR 23 2024 | Reg# 2373334

RED SIX MILE BADGER 529G

RED HALL'S BARRY 040C  
RED HALL'S MISS LARK 504C

RED LFA MELTE 138J

RED LFA FALCON 714F  
RED LFA MELTE 442C

BW	205d	CE	BW	WW	YW	MCE	MILK
84	659	-2.0	3.3	48	85	5.0	21

- Nicely proportioned Badger son
- Dam is a Falcon daughter who weans off a big calf every year

WEANING INDEX 102

Calving Ease Level 2



30

RED LFA **TORRENT 88M**

LFA 88M | MAR 28 2024 | Reg# 2373335

RED SIX MILE MONSOON 332K

RED W SUNRISE TYPHOON 604H  
RED SIX MILE MS PATHY 610C

RED LFA MISS 127J

RED SIX MILE BADGER 529G  
RED RACK MISS 1F

BW	205d	CE	BW	WW	YW	MCE	MILK
92	681	-3.0	4.8	57	99	5.0	20

- Another dark red Monsoon son
- Stands square on his legs
- Keep all the females, Badger daughters have perfect udders

WEANING INDEX 105

Calving Ease Level 1



31

RED LFA **FALCON 80M**

LFA 80M | MAR 16 2024 | Reg# 2373329

RED LFA FALCON 714F

RED LAZY MC GUNNER 137D  
RED LFA LAKME 320A

RED LFA FOXYLADY 945H

RED LAURON BEDROCK 30B  
RED LFA FOXYLADY 644E

BW	205d	CE	BW	WW	YW	MCE	MILK
88	671	1.0	2.3	42	74	6.0	24

- Smooth shouldered cow bull who should be easy calving
- Dark red coloring
- Dam traces back to 288A, a matriarch still working hard in our herd at 13 years of age

WEANING INDEX 104

Calving Ease Level 1

32

RED LFA **TITAN 96M**

LFA 96M | APR 14 2024 | Reg# 2373343

RED SIX MILE BADGER 529G

RED HALL'S BARRY 040C  
RED HALL'S MISS LARK 504C

RED LFA DELILA 515D

RED LAURON BEDROCK 30B  
RED LFA DELILA 370B

BW	205d	CE	BW	WW	YW	MCE	MILK
93	678	-2.0	3.6	49	90	3.0	23

- Chunky moderate framed Badger son
- Nicely put together, easy fleshing

WEANING INDEX 104

Calving Ease Level 1

2 YEAR OLDS





33

## RED LFA **TORRENT 93M**

LFA 93M | APR 6 2024 | Reg# 2373340

- Deep rugged bull with a ton of middle and great fleshing ability
- Tons of performance; Indexed #1 of 47 bulls at weaning
- One of the most correct made bulls in the offering

**WEANING INDEX 120**

Calving Ease Level 1

34

## RED LFA **ALFONZO 95M**

LFA 95M | APR 8 2024 | Reg# 2373342

**RED LAURON FONZIE 109F**

RED JEWEL TRADIN RIGHT 108D  
RED LAURON MISSY 81Y

**RED LFA LAKOTA 923H**

RED RSL ICE MAN 260D  
RED U2 LAKOTA 125F

BW	205d	CE	BW	WW	YW	MCE	MILK
80	619	10.0	-1.2	32	55	11.0	17

- Calving Ease Bull on both sides of the pedigree
- Dam is specifically bred to produce heifer bulls for us and she doesn't miss; 4 calves average 72 pounds

**WEANING INDEX 96**

Calving Ease Level 4

## RED SIX MILE MONSOON 332K

RED W SUNRISE TYPHOON 604H  
RED SIX MILE MS PATHY 610C

## RED LFA GAMMA 102J

RED LAURON FONZIE 109F  
RED GOAD GAMMA 237'19

BW	205d	CE	BW	WW	YW	MCE	MILK
93	765	0.0	3.4	61	101	6.0	22



**2 YEAR OLDS**



# REFERENCE SIRES



**RED SIX MILE BADGER 529G**

**REG# 2099368 TATTOO SIXM 529G**  
RED HALL'S BARRY 040C X RED HALL'S MISS LARK 504C



**RED LWNBRG INFRARED 47H**

**REG# 2150012 TATTOO TED 47H**  
RED LWNBRG ELECTRIC 4D X RED LWNBRG CROSS OVER 150D



**RED LAURON FONZIE 109F**

**REG# 2030534 TATTOO TAH 109F**  
RED JEWEL TRADIN RIGHT 108D X RED LAURON MISSY 81Y



**RED LFA FALCON 714F**

**REG# 2052363 TATTOO LFA 714F**  
RED LAZY MC GUNNER 137D X RED LFA LAKME 320A



**RED SIX MILE MONSOON 332K**

**REG# 2274804 TATTOO SIXM 332K**  
RED W SUNRISE TYPHOON 604H X RED SIX MILE MS PATHY 610C



**RED JEWEL MERLIN 121K**

**REG# 2290654 TATTOO JSM 121K**  
RED JEWEL MERLIN 133H X RED JEWEL CHRISTINA 12G



**RED RAINBOW PILOT 31J**

**REG# 2238760 TATTOO DWBN 31J**  
RED U2 HEADSTRONG 273G X RED RAINBOW LARKABA 47G



**RED TOWAW SELKIRK 406J**

**REG# 2229486 TATTOO WDV 406J**  
RED HAMCO KINGMAN 465F X RED TOWAW MONIQUE 410E

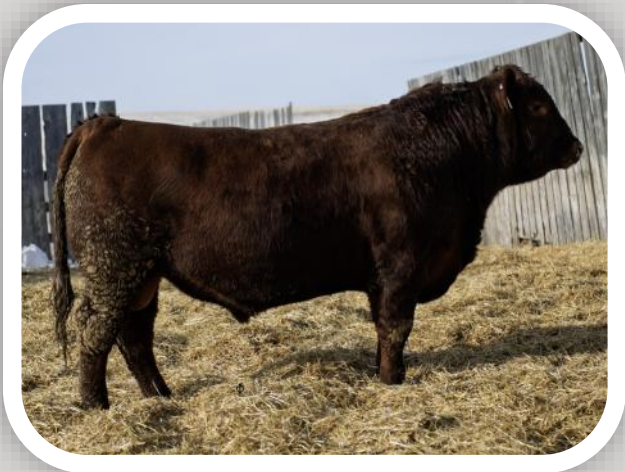


## WE WOULD LIKE TO EXTEND THANKS TO OUR 2025 BUYERS

David, Wilf & Sylvia Jans - Medicine Hat, AB  
Erwin Schlenker Farms - Medicine Hat, AB  
Ketchmark Ranch - Brooks, AB  
R&V White Ranches - Jenner, AB  
Triangle S Cattle - Cypress County, AB  
B-E Ranch - Kimberley, BC  
Tom Kotke - Lethbridge, AB  
Bar DS Ranch Ltd. - Richmond, SK  
Viken Read Ranching - Medicine Hat, AB  
Border Ridge Farms - Hilda, AB  
BT Grazing - Hilda, AB  
Marg Degen - Medicine Hat, AB  
Graeme Dennis - Medicine Hat, AB

Elkwater Farming Co. - Irvine, AB  
FC Farms - Medicine Hat, AB  
Peter Froland - Hughenden, AB  
Tom Graham - Webb, SK  
Henry Klassen - Burdett, AB  
Lazy M Bar Ranch - Byemore, AB  
Bradley Proud - Foremost, AB  
Ivan Schlaht - Bindloss, AB  
Gary Schlenker - Medicine Hat, AB  
Doug West - Lomond, AB  
Kelly Kalo - Brooks, AB  
Jay Penner - Claresholm, AB  
Jay Smith - Champion, AB

## 2025 SALE HIGHLIGHTS



**RED LFA UPSHOT 44L**  
Henry Klassen



**RED LFA INFRARED 73L**  
BT Grazing



**RED LFA BADGER 59L**  
Tom Kotke



**RED LFA UPSHOT 55L**  
Gary Schlenker



**RED LFA INFRARED 38L**  
Ivan Schlaht

CURRENT WEIGHTS AND SCROTAL MEASUREMENTS WILL BE AVAILABLE SALE DAY



## GLOSSARY OF CATALOGUE INFORMATION

**BW...**Actual Weight at Birth    **205d...**205 Day Adjusted Weight

**AngusONE Breed Averages for 2024 Calves**

**WEANING INDEX...**Weaning Weight as a % of the average WW of the contemporary group

CE	BW	WW	YW	MCE	MILK
2.4	1.3	43	74	5.4	25

## TERMS AND CONDITIONS

### TERMS

The terms of this sale are cash or cheque payable in Canadian funds. Settlement is to be made with the clerks present immediately following the auction. The right of property shall not pass until settlement is made in full. Each animal will be sold to the highest bidder. Disputes will be settled by the auctioneer & their decision will be final.

### INSURANCE

Each animal becomes the risk of the purchaser as soon as it's sold. Therefore we recommend you insure your purchases.

### BREEDERS GUARANTEE

All animals are sold as guaranteed breeders as outlined in the CAA bylaws. We reserve the right to draw semen on any bull at our expense and your convenience. All bulls will be semen tested prior to delivery. No guarantee is given that a bull's semen will freeze. Nor does the guarantee apply to animals that are injured, sick, or uncared for. Under no circumstances shall the seller be responsible for more than the purchase price of the animal in question.

### ACCIDENTS

Even though every precaution will be taken to protect the safety of everyone attending Lust Farms, no one acting on the behalf of Lust Farms nor the owners assume any responsibility in any matter of liability, legal or otherwise in the event of loss of property or injury. All persons attend at their own risk.

### DELIVERY

Deliveries to **Canadian Destinations** will begin after the sale at our earliest convenience. Lust Farms offers free delivery within 300km of Medicine Hat, AB. Costs associated with deliveries beyond that are the responsibility of the buyer. **International Purchases** are sold FOB Lust Farms. We will assist to complete testing and arrange for shipping. But, all costs incurred to import/export as well as freight shall be the responsibility of the buyer. Please call for details.

### CAA REGISTRATION

A certificate of registration will be transferred once settlement is made in full.

### ANNOUNCEMENTS

All announcements made from the auction block will take precedence over any printed material.



**WATCH FOR OUR SELECT GROUP OF OPEN REPLACEMENT HEIFERS TO SELL AT PERLICH BROS IN LATE APRIL**



**Lust Farms**  
*red angus*

11405 Range Road 42  
Cypress County, AB  
T1B 0K6

8<sup>TH</sup> ANNUAL

**Lust Farms**  
*red angus*

*Red Angus* Bull Sale

FRIDAY MARCH 20, 2026 | 1 PM

AT THE RANCH | CYPRESS COUNTY, AB

