

fin stabilizers

ALL SPEED STABILIZATION FOR YACHTS 50FT (15M) – 164FT (50M)

The premium choice

Humphree equipment is designed and manufactured to deliver world-class quality and reliability. Customer support and spare parts are available wherever and whenever needed, through our Head Office in Sweden or via our expanding network of local representatives around the world.



**ultra
silent**

www.humphree.com

FOR YOUR CLOSEST HUMPHREE REPRESENTATIVE

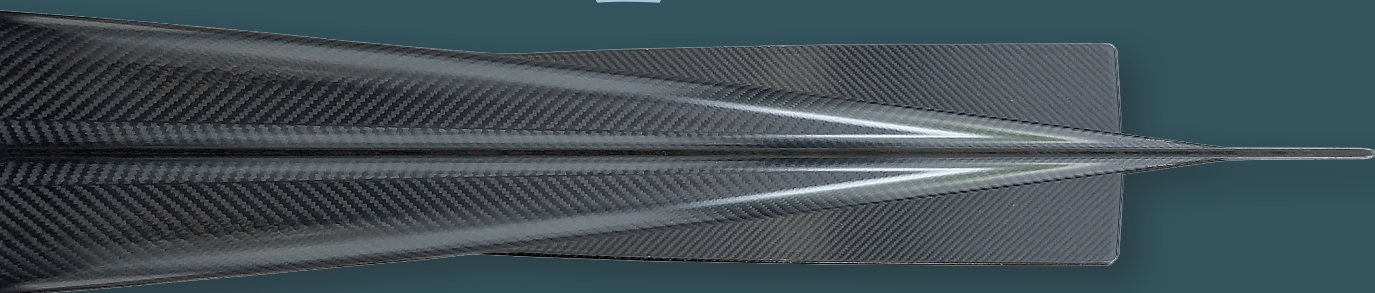
Humphree AB • Grimboåsen 16 • 417 49 Göteborg SWEDEN
+46 31 744 35 77 • humphree@humphree.com

HUMPHREE®

Trim and stabilization systems

all speed

24DC electric fin stabilizers



The NEW state-of-the-art 24V DC fin stabilizers deliver a game changing package and offer a number of benefits compared to what has been available on the market previously. With 24V DC, the system is operated without keeping a genset engine running. The full electric system provides soft start- & soft stop-function which minimize noise. The main engine alternators will charge the batteries powering the system while underway, and, while at

anchor, the system can operate for an extended time on battery power alone. Less noise, less fuel, less wear. The system provides full stabilization from zero all the way up to top speed. On top of all, the system can be fully integrated with our interceptors, meaning that roll, pitch and yaw motions are all controlled by one system. The Coordinated Turn feature provides greater comfort during turns by coordinating fin and rudder movement.

Suitable yacht size 50ft (15m) – 164ft (50m)
Humphree fins comes in five different sizes:
0.60m² 0.80m² 1.00m² 1.30m² 1.50m²
Twin or Quad installation

features and benefits

- **The NEW Ultra Silent Electric fin servo actuator**

At Humphree, we are constantly striving to refine our products with the aim to deliver the best systems in the world. We are proud to have launched our new Ultra Silent Actuator version in 2022, which means that we have managed to lower the volume - from very low to a whisper!

- **Zero emission mode, stabilize without a running engine**

As this system is 100% powered by 24V DC, the system will be operated without a genset running at zero speed. Running directly off your battery bank.

- **A smart, safe and easy installation**

By using 24V DC power it means that no large and heavy AC power box has to be installed and no hydraulic hoses or pumps are needed. Once the actuators are in place, simply connect to the DC power. All communication cables are delivered in the package with plug and play watertight connectors. The system also require a minimum of maintenance.

- **Underwater replacable fin, designed for safety**

In the event of a fin strike, the fin is engineered to break away while maintaining the integrity of the hull structure. Furthermore, the unique flange mount design allows for a new fin to be installed underwater without the need to haul the boat. For a shipyard, the design also means that a fin can be removed or installed in just 10 minutes! Great when fins needs to be removed when boat is on land.

- **Instant start and Conductive cooling**

Humphree stabilizers do not require any preparation or spool up time to get started. Simply push the button and the stabilization starts immediately! With the Unique flange mount design we are able to utilize conductive water cooling meaning that there is no need for any external cooling system.

- **Eliminate anchor walking**

The unique ability to rotate the fins 360° has many benefits. Our "Bow anchor mode" means that the fins rotate 180° when anchored at the bow. Instead of "swimming" against the anchor creating so called anchor walk, our fins will swim away from the anchor, keeping the anchor line tensioned. This means a much more stable platform when at anchor, resulting in minimal sway, greater comfort and safety.



customizable

solid, cutable upper edge

The new Humphree fin design has an optimised hydro-dynamic profile for low drag. The upper edge is made solid, another unique Humphree innovation.

The common need to cut the fin to avoid touching the hull is now very easy as no lamination is required. Simply cut the thin solid part of the fin to required shape and it is ready to be installed.

It is further possible to reach a better tolerance of the modification compared to the traditional cutting/fiber-glass work.

unique
FEATURE



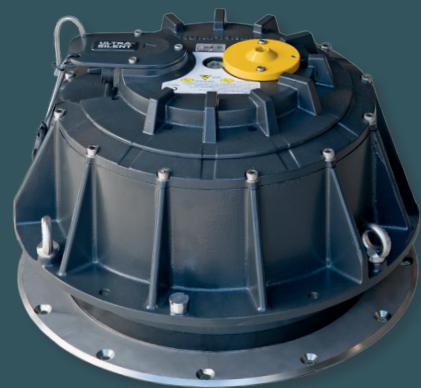
servo actuators

low built-in height and low weight

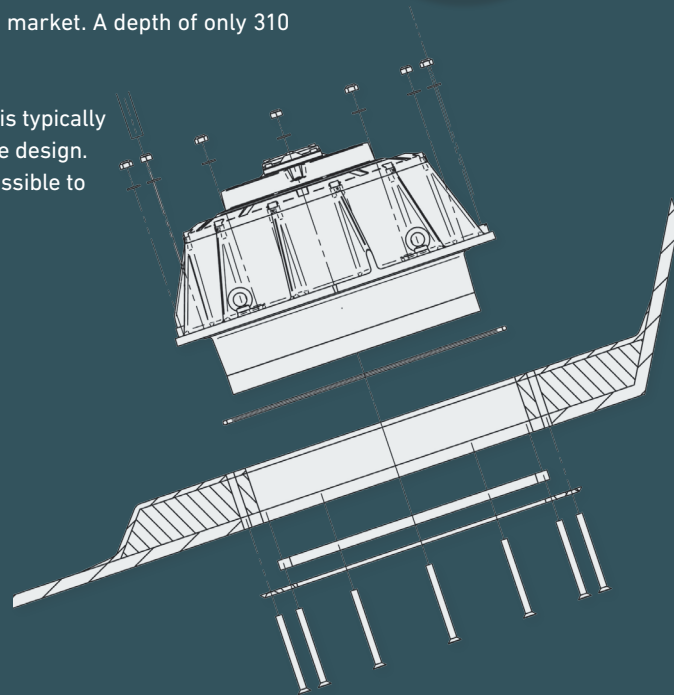
The new sturdy patented servo actuators are extremely compact and with the 24V power, no space-consuming hydraulic pumps or AC power modules are required. This also means an easier installation. The space requirement inside the vessel is less than the most compact hydraulic fin stabilizer systems on the market. A depth of only 310 mm from exterior mounting flange.

Also, compared to the competition, the Humphree system is typically 25-50% lighter as a result of the 24V power and the unique design. The servo units have an integrated manual tiller so it is possible to rotate the fin, if for example the power supply is lost.

ultra
silent



Servo unit for the largest fins. SU563.



Servo unit SU553

TWIN OR QUAD?

For large yachts, our QUAD function makes it just as easy to install FOUR fin stabilizers on one yacht. All Humphree features are retained. Even the low drag.



QUAD FIN INSTALLATION

Mangusta 130 retrofitted with
Humphree Quad 1.0m² fins

why not choose a complete solution?

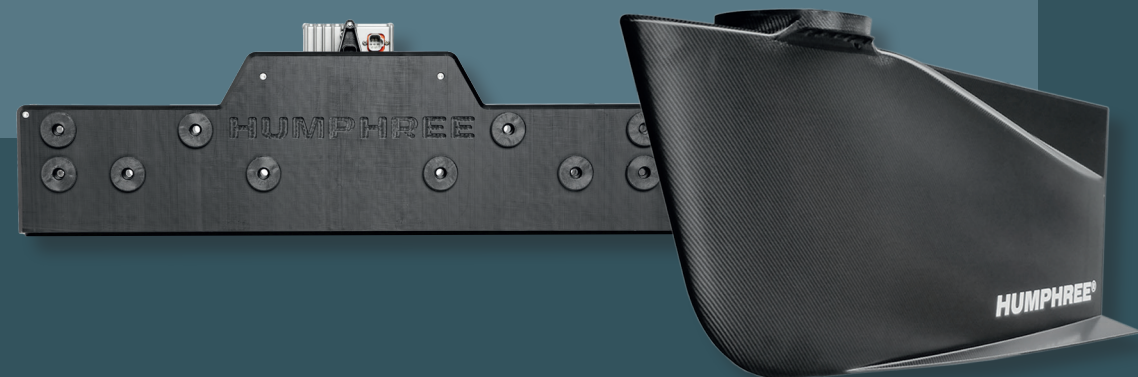
FINS AND INTERCEPTORS INTEGRATED AS A PACKAGE

When choosing a Humphree Fin Stabilizing system, the premium Humphree function package **PROFESSIONAL PLUS** is included as standard. By adding our ultra fast interceptors on your boat, you can fully enjoy all the full Humphree benefits.

Humphree interceptor trim tabs will add an automatic trim of the boat for lower fuel consumption, better performance, improved visibility and will also provide pitch stabilization to the boat.

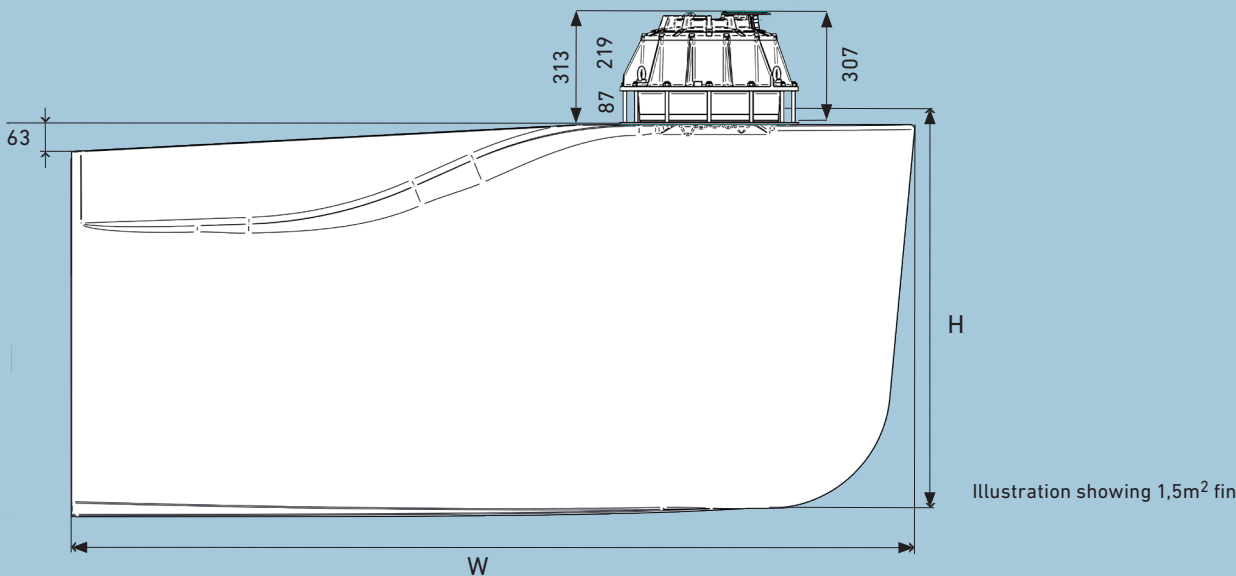
The complete solution from one supplier that made Humphree win the prestigious DAME award in 2015.

HUMPHREE FUNCTION:	Fins only	Fins + Interceptor
Auto Trim Control - Auto adjustment of boat trim	NO	YES
Auto List Control - Keeps boat even keel	YES	YES
Coordinated Turn Control	YES	YES
Optimized Coordinated Turn Control with Interceptor	NO	YES
Stabilization Zero Speed	YES	YES
Stabilization underway - Roll	YES	YES
Stabilization underway - Pitch	NO	YES



Fin Data

Fin Size:	0.6m ²	W 1142 mm	H 597mm	Weight: 18kg	Max speed: 40 knots
	0.8m ²	W 1490 mm	H 587mm	Weight: 20kg	Max speed: 40 knots
	1.0m ²	W 1491 mm	H 729mm	Weight: 25kg	Max speed: 40 knots
	1.3m ²	W 1890 mm	H 762 mm	Weight: 52kg	Max speed: 36 knots
	1.5m ²	W 1890 mm	H 882mm	Weight: 55kg	Max speed: 33 knots
Material:	Carbon and GRP		Installation: Twin or Quad		



Servo Data SU553

Materials inside hull:	Aluminium housing
Materials outside hull:	Stainless steel (Duplex)
Motor:	Brushless Servo motor
Power supply:	24-32V DC
Weight:	101kg
Max peak power consumption:	5kW
Fin rotational speed:	Up to 90°/s
Communication:	HCS5 Integrated
Possible rotation:	360°

Servo Data SU563

Materials inside hull:	Aluminium housing
Materials outside hull:	Stainless steel (Duplex)
Motor:	Brushless Servo motor
Power supply:	24-32V DC
Weight:	103kg
Max peak power consumption:	8kW
Fin rotational speed:	Up to 90°/s
Communication:	HCS5 Integrated
Possible rotation:	360

Power consumption - Zero speed, average

	Max. average consumption	Typical average consumption (Moderate waves)
0,6m2 FIN SU553	(Each): 43 A RMS (24V)	~ 25 A RMS (24V)
0,8m2 FIN SU553	(Each): 58 A RMS (24V)	~ 35 A RMS (24V)
1,0m2 FIN SU553	(Each): 71 A RMS (24V)	~ 42 A RMS (24V)
1,3m2 FIN SU553	(Each): 90 A RMS (24V)	~ 65 A RMS (24V)
1,5m2 FIN SU553	(Each): 105 A RMS (24V)	~ 80 A RMS (24V)