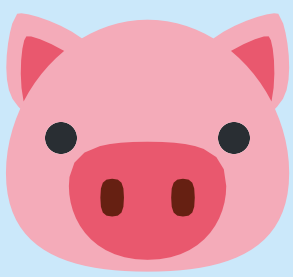


# Phonological Processes



Phonology is a pattern of sound errors which change as children develop. Children typically stop using these patterns by the following ages:

3  
years



**Devoicing**  
'pick' for 'pig'

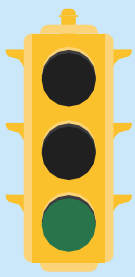


**Assimilation**  
'bub' for 'bus'



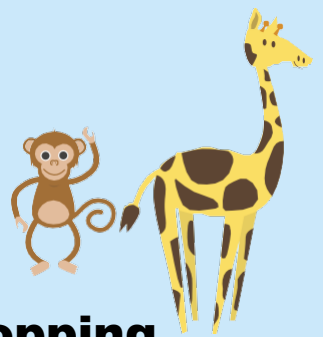
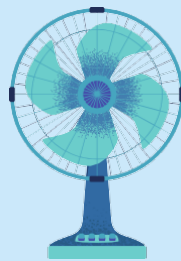
**Final Consonant Deletion**  
'cu' for 'cup'

3.5  
years



**Fronting**

'dow' for 'go' or 'sue' for 'shoe'



**Stopping**

'pan' for 'fan' or 'do' for 'zoo'

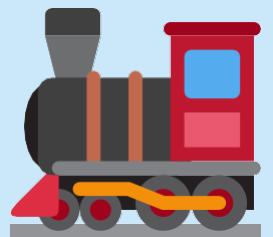
4  
years



**Weak Syllable Deletion**  
'nana' for 'banana'

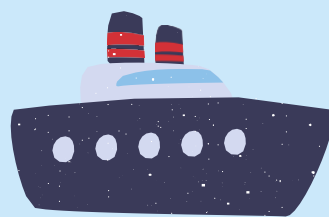


**Cluster Reduction**  
'fog' for 'frog'



**Deaffrication**  
'tutu' for 'choo choo'

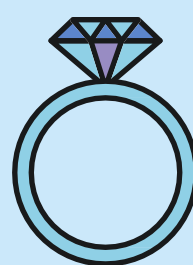
4.5  
years



**Stopping of affricates**

'tease' for 'cheese' or 'tip' for 'ship'

5  
years



**Gliding**

'white' for 'light' or 'wing' for 'ring'

6  
years



**Fricative Simplification**

'fum' for 'thumb'

