

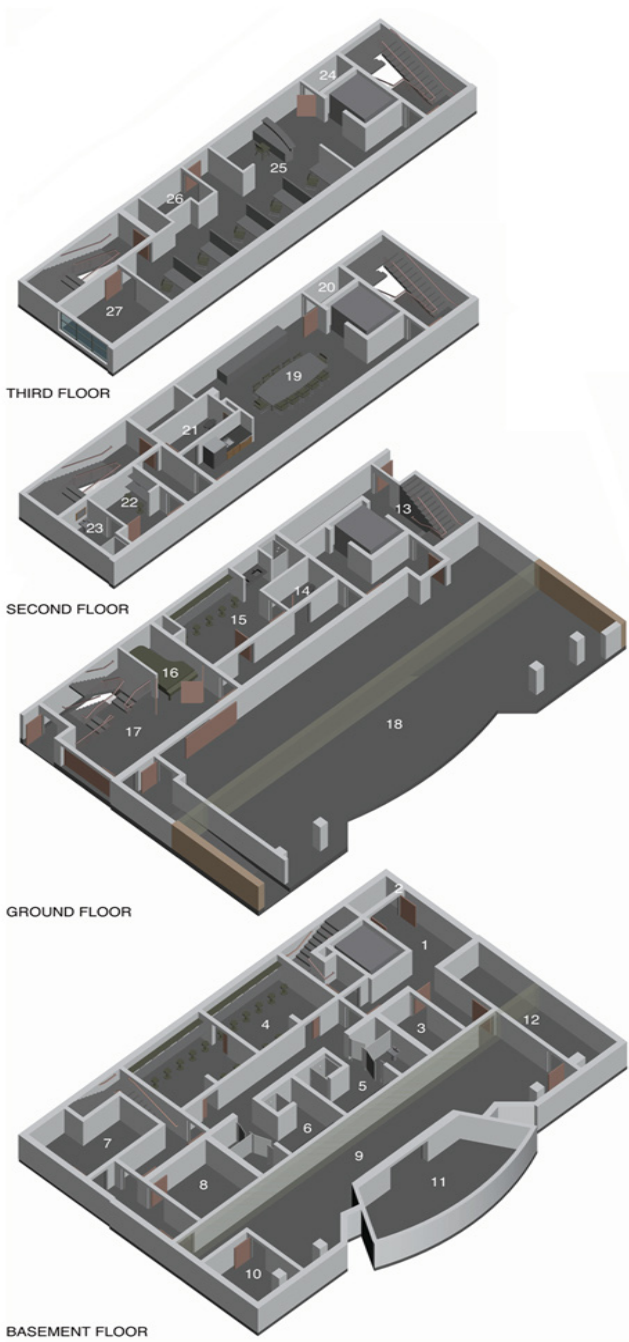
lyric theatre stuart, florida

The historic theater, built in 1925 is listed on the National Register of Historic Places and was designed as a silent movie house. The original stage tower was reduced in height after being damaged by a hurricane, and the lobby and audience chamber have undergone a series of minor improvements to better serve the needs of live performance.

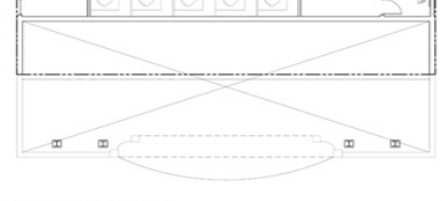
Following the long awaited acquisition of a small 30 foot wide parcel to the North of the building, the Lyric requested a design that would create a new larger stage tower, increasing the height and doubling the footprint, while integrating the existing walls of the historic stage house, and providing a back of house support space addition that would compliment the original architecture. A new multi-level addition is proposed with a new basement to provide change rooms and storage spaces, which are arranged to tie into what will be a reclaimed and improved orchestra pit. The orchestra level back-of-house includes a generous receiving area, storage, chorus change room and an elevator to link all levels, and star change room, green room/conference room, offices, storage and mechanical area make up the three upper levels.

Project Information

Area:	12,300 sq. ft.
Scope:	Renovations and Additions
Services:	Programming through Construction Documents
Completion Date:	August 2003
Client:	Lyric Theatre
Contact:	John Loesser 772.201.5847
Architect of Record:	Zeidler Partnership Inc (Michael Nelson - Director)
Contractor:	N/A
Delivery Method:	N/A
Construction:	\$1.1 Million estimated

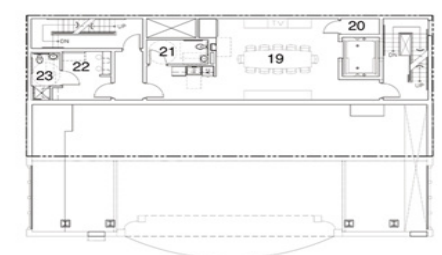


- 24 WORK AREA
- 25 STORAGE
- 26 RESTROOM
- 27 DIRECTOR'S OFFICE



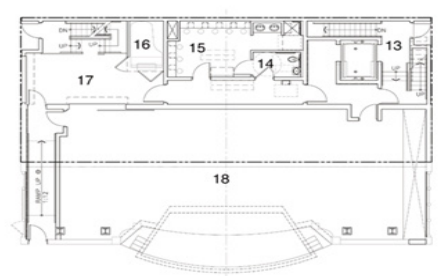
THIRD FLOOR PLAN

- 19 GREEN ROOM
- 20 STORAGE
- 21 RESTROOM
- 22 STAR ROOM
- 23 RESTROOM



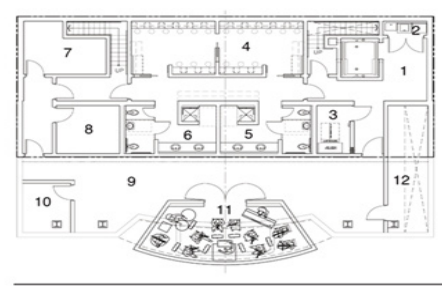
SECOND FLOOR PLAN

- 13 LOBBY
- 14 RESTROOM
- 15 6-8 PERSON DRESSING
- 16 PIANO STORAGE
- 17 RECEIVING
- 18 STAGE



GROUND FLOOR PLAN

- 1 ELEVATOR LOBBY
- 2 LAUNDRY
- 3 ELEVATOR MACHINE
- 4 CHORUS CHANGING
- 5 RESTROOM
- 6 RESTROOM
- 7 VIS. CONDUCTOR
- 8 TECH OFFICE
- 9 STORAGE
- 10 MAINTENANCE
- 11 ORCHESTRA PIT
- 12 COUNTERWEIGHT STO



BASEMENT FLOOR PLAN

