



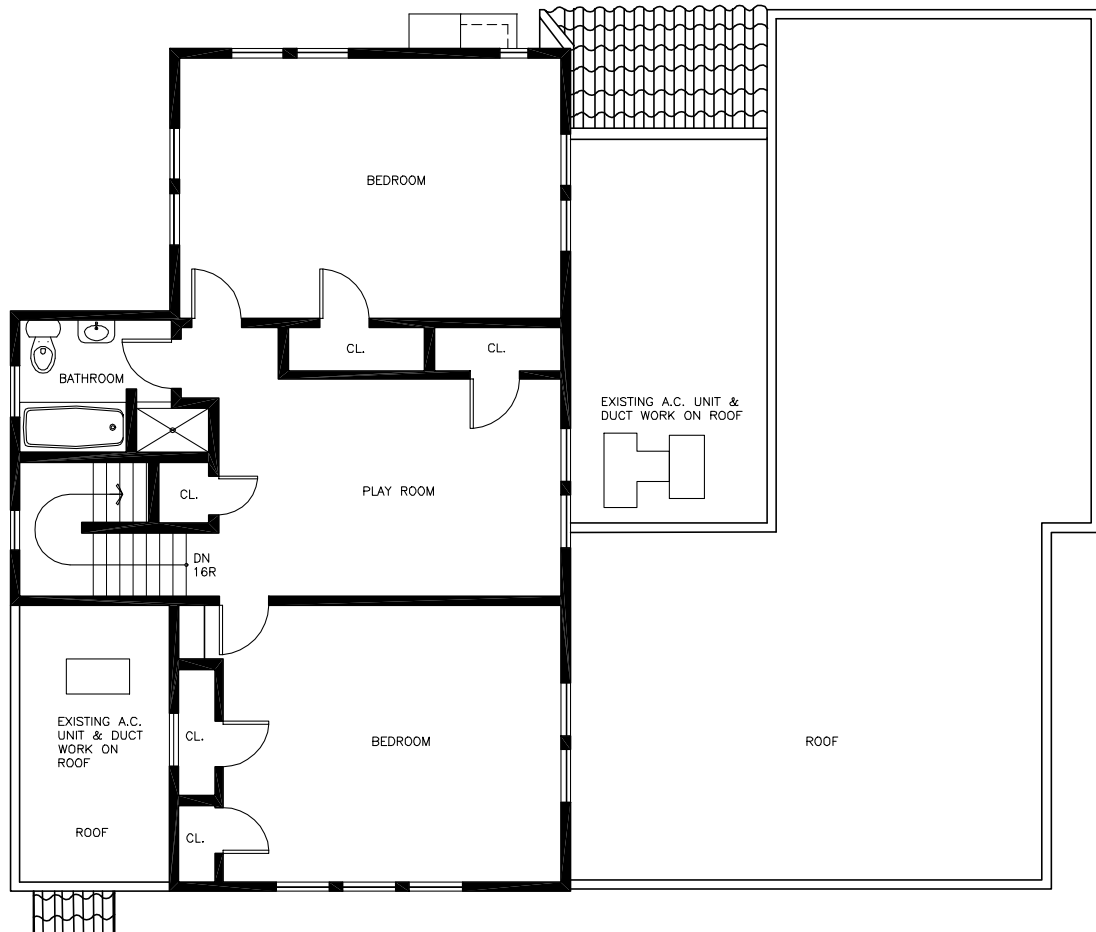
champion residence

west palm beach, florida

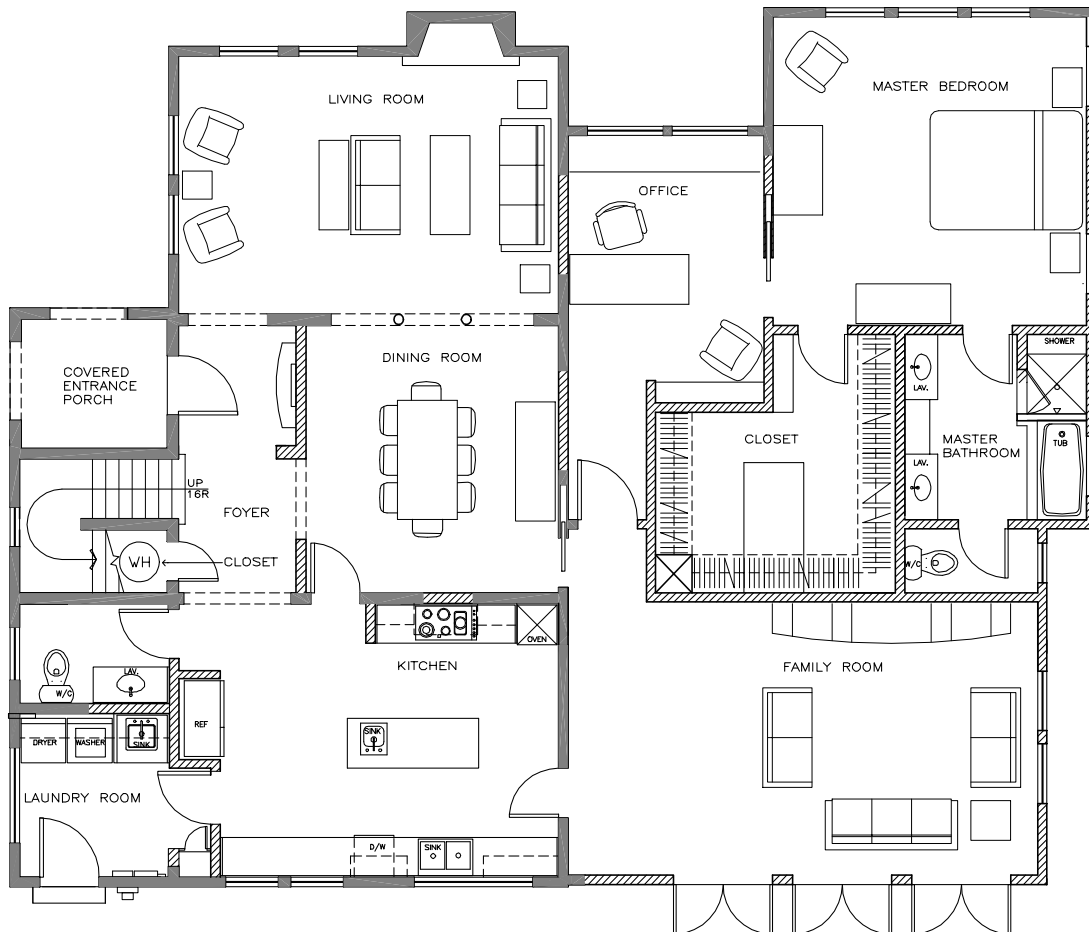
project involved the creation of a large Master Suite with an Office and Family Room within a former enclosed screened in area and reconfiguration of a second floor to accommodate the needs of a new family with 3 young children. We worked closely with the West Palm Beach Historic Commission to ensure all renovations were acceptable and complimentary to the historic 1920's structure. A detached garage was converted to a home office suite.

Project Information

Area:	2,600 sq. ft.
Scope:	New Construction and Renovations Complete
Services:	Architectural Services
Completion Date:	2002
Client:	Greg Champion
Architect of Record:	Zeidler Partnership Inc (Michael Nelson - Director)
Contractor:	N/A
Delivery Method:	CM at Risk
Construction Cost	N/A



Second Floor



First Floor