



seminole theatre

homestead, florida

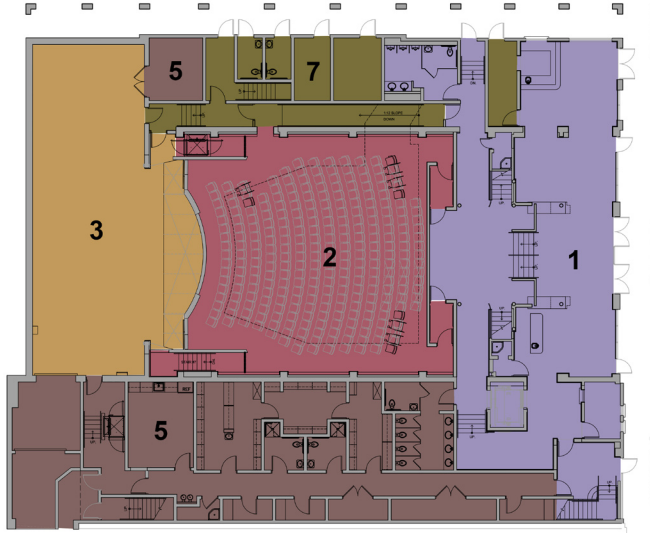
The Seminole Theatre in downtown Homestead was originally built in 1921 and served as the area's premier entertainment venue for years. Ravaged by fire it was rebuilt in the Art Deco style in 1940 and in 1993 suffered significant roof and other damage from Hurricane Andrew.

In the late 1990's the original wooden roof structure was replaced with a steel and concrete assembly and a series of subsequent additions including a stage tower shell prepared the way for it to present not only movies but a wide variety of live music, dance and theatrical performances. Stalled by the downturn in the economy the project languished with the additions structure only in place and the lobby / auditorium largely unchanged until designel was recently retained to analyze the project's previous direction, redesign as practical within the confines of the original / additions envelope and insure its operational functionality. We have reorganized the planning to radically increase the amount of programmable income producing (function, education) areas. The redesigned ground level lobby also now provides for 2,414 contiguous square feet of area where the previous design split the space into small virtually unusable pockets of area. Other improvements include widening the proscenium from 24' to 35' to enable a broader range of productions and rethinking the whole approach to the mechanical system design providing energy efficient under seat air supply in the hall and eliminating an entire level of mechanical area in one of the additions converting that area to function/ education space with fantastic views out over the City's main downtown park / main boulevard.

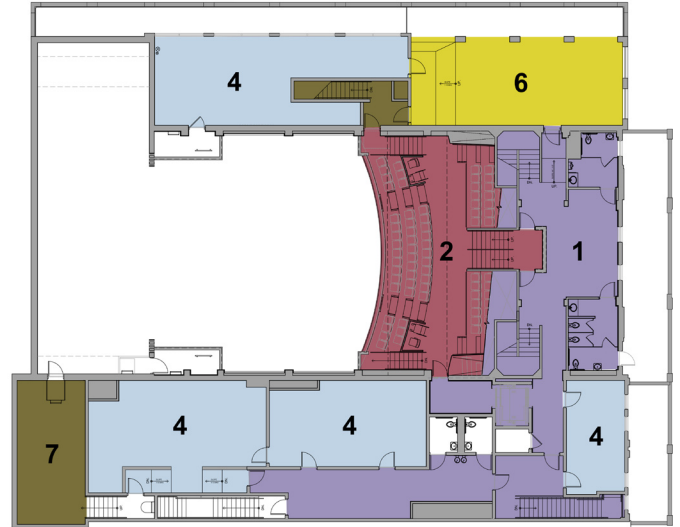
Project Information

Area:	22,795 sq. ft.
Scope:	Renovations
Services:	Complete Architectural Services
Completion Date:	November 2015
Client:	City of Homestead
Contact:	Rick Ammirato 305.224.4401
Architect of Record:	Designel, LLC. (Michael Nelson - Partner)
Contractor:	MCM
Delivery Method:	CM at Risk
Construction Cost	\$5 Million

- 1. LOBBY / FRONT OF HOUSE
- 2. AUDITORIUM
- 3. STAGE
- 4. MULTI-PURPOSE / FUNCTION / REHEARSAL SPACE
- 5. PERFORMER / BACK OF HOUSE SUPPORT
- 6. COVERED EXTERIOR FUNCTION SPACE
- 7. BUILDING SUPPORT / CIRCULATION



First Floor Plan



Second Floor Plan

