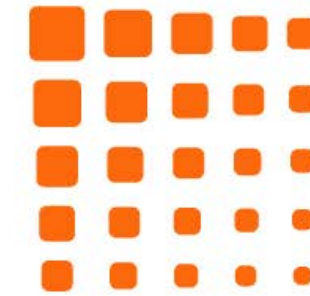


**radiant tiles**

---

Melbourne Warehouse & Gallery:  
1/10, Network Drive, Truganina VIC 3029

[www.radianttiles.com.au](http://www.radianttiles.com.au) | +61 421 401 969



**radiant tiles**

**SPRING '22 CATALOGUE**

GVT &  
PGVT TILES

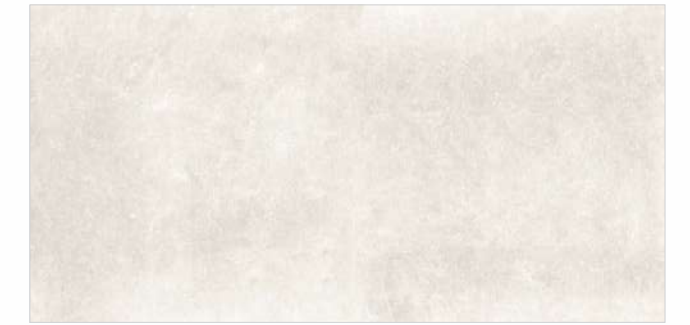
600x1200mm  
195x1200mm | 600x600mm



**Wall**  
 3024  
 CRV 3026  
 \_Size : 600x1200mm

**Floor**  
 3025  
 \_Size : 600x1200mm

**Glazed Vitrified Tiles**



3025

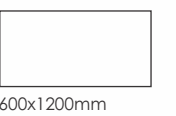


CRV 3026



3024

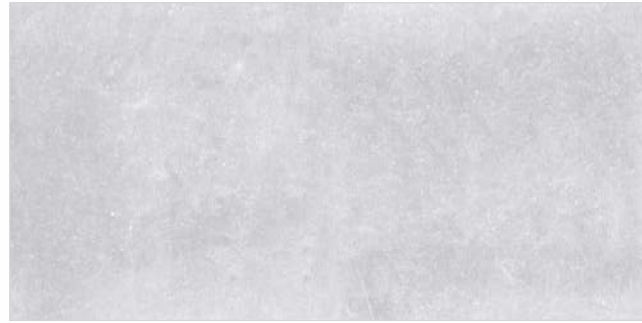
**THICKNESS:** 9 mm  
**SURFACE:** Matt



600x1200mm



3019



3022



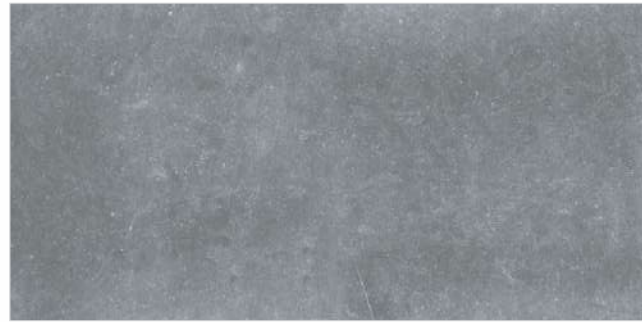
CRV 3020



CRV 3023



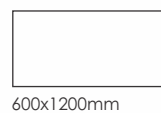
3018



3021

Glazed Vitrified Tiles

THICKNESS: 9 mm  
SURFACE: Matt



CRV 3034



CRV 3037



CRV 3035



CRV 3038



CRV 3033



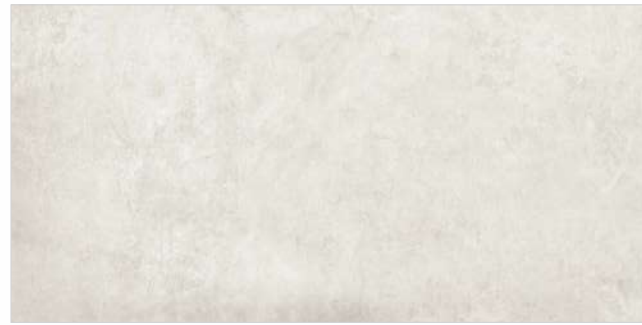
CRV 3036



Glazed Vitrified Tiles

THICKNESS: 9 mm  
SURFACE: Matt





CRV 3028



CRV 3031



CRV 3029



CRV 3032



CRV 3027

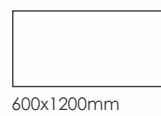


CRV 3030



Glazed Vitrified Tiles

THICKNESS: 9 mm  
SURFACE: Matt



600x1200mm



Wall  
CRV 3031, CRV 3032  
\_Size : 600x1200mm

Floor  
8044  
\_Size : 600x600mm

THICKNESS: 9 mm  
SURFACE: Matt



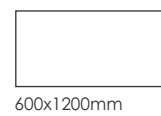
600x1200mm



**Wall**  
CRV 3039  
\_Size : 600x1200mm

**Floor**  
CRV 3040  
\_Size : 600x1200mm

**THICKNESS: 9 mm**  
**SURFACE: Matt**



600x1200mm



CRV 3040



CRV 3043



CRV 3041



CRV 3044



CRV 3039



CRV 3042



**Glazed Vitrified Tiles**

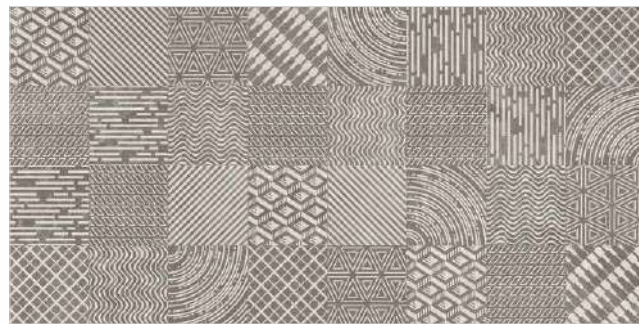
**THICKNESS: 9 mm**  
**SURFACE: Matt**



600x1200mm



CRV 3049



CRV 3050



CRV 3048

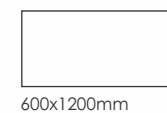


**Wall**  
 CRV 3049  
 CRV 3050  
 \_Size : 600x1200mm

**Floor**  
 CRV 3048  
 \_Size : 600x1200mm

**Glazed Vitrified Tiles**

**THICKNESS:** 9 mm  
**SURFACE:** Matt



600x1200mm



CRV 3046



3052



CRV 3047



CRV 3053



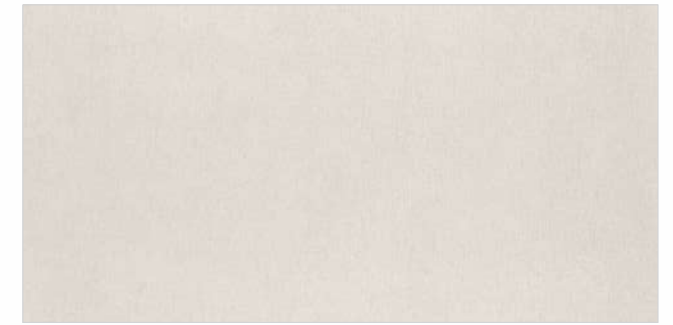
CRV 3045



3051



CRV 3055



CRV 3058



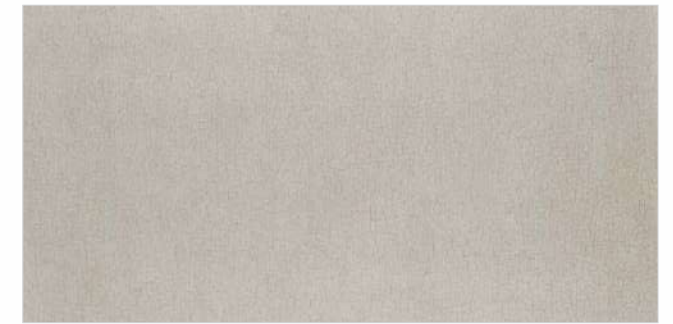
CRV 3056



CRV 3059



CRV 3054

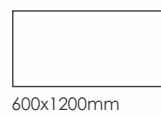


CRV 3057



Glazed Vitrified Tiles

THICKNESS: 9 mm  
SURFACE: Matt



600x1200mm

Glazed Vitrified Tiles

THICKNESS: 9 mm  
SURFACE: Matt



600x1200mm



Wall  
3001  
**Glazed Vitrified Tiles**  
\_Size : 600x1200mm

Floor  
3002  
\_Size : 600x1200mm

**Glazed Vitrified Tiles**



3001



3002

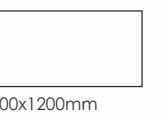


3003



3004

**THICKNESS : 9 mm**  
**SURFACE : Matt**







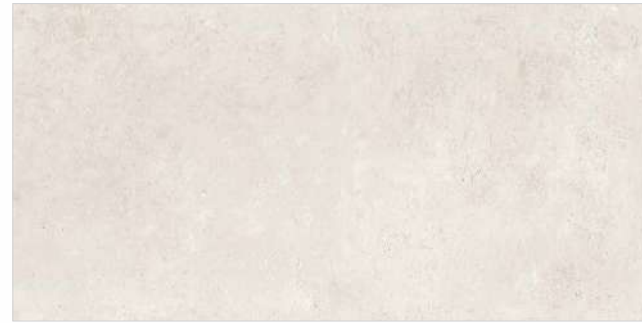
3008



3012



3009



3013



3010



3014



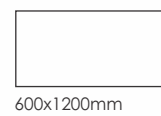
3011



3015

**Glazed Vitrified Tiles**

**THICKNESS:** 9 mm  
**SURFACE:** Matt



600x1200mm



3016



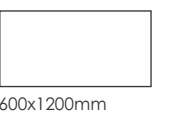
3017



**Wall**  
3009  
\_Size : 600x1200mm

**Floor**  
8008  
\_Size : 600x600mm

**THICKNESS:** 9 mm  
**SURFACE:** Matt



600x1200mm



Wall

3006

\_Size : 600x1200mm

Floor

3005

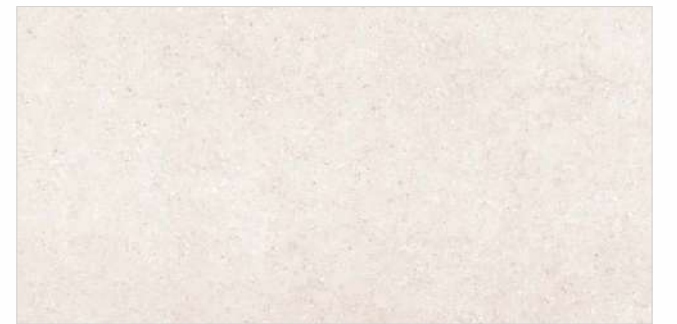
\_Size : 600x1200mm



Glazed Vitrified Tiles



3005



3006



3007

THICKNESS: 9 mm

SURFACE: Matt



600x1200mm



Terraco Ash



Terraco Natural



Terraco Crema

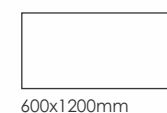
**Floor**

Terraco Crema  
\_Size : 600x1200mm

Glazed Vitrified Tiles



THICKNESS: 9 mm  
SURFACE: Matt





Floor  
Loft Gris  
\_Size : 600x1200mm

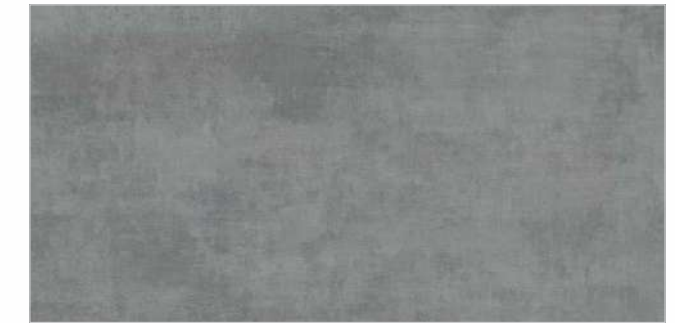
Glazed Vitrified Tiles



THICKNESS: 9 mm  
SURFACE: Matt



600x1200mm



Loft Gris



Loft Crema



Loft Coffee



Concrete Brown



Concrete Natural



Concrete Nero

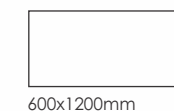
**Wall**  
Concrete Natural + Nero  
\_Size : 600x1200mm

**Floor**  
Concrete Nero  
\_Size : 600x1200mm

Glazed Vitrified Tiles



**THICKNESS:** 9 mm  
**SURFACE:** Matt



600x1200mm



1061



1063



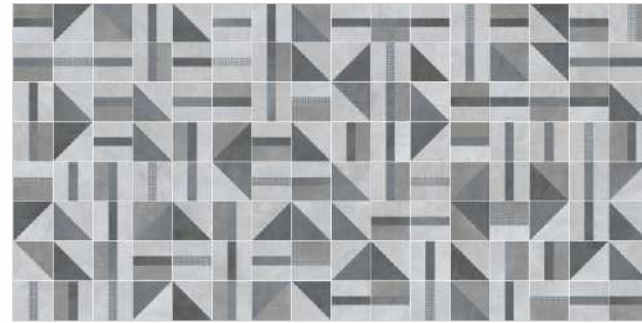
1069



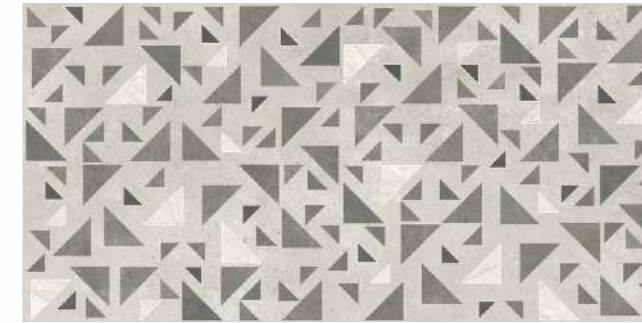
1071



1060 DECOR



1062 DECOR



1068 DECOR



1070 DECOR



1060



1062



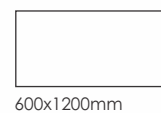
1068



1070

Glazed Vitrified Tiles

THICKNESS: 9 mm  
SURFACE: Glossy



600x1200mm

Glazed Vitrified Tiles

THICKNESS: 9 mm  
SURFACE: Glossy



600x1200mm



1067



1066 DECOR



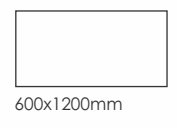
1066

**Wall**  
1067 + 1066  
1066 DECOR  
\_Size : 600x1200mm

**Floor**  
1066  
\_Size : 600x1200mm

**Glazed Vitrified Tiles**

**THICKNESS:** 9 mm  
**SURFACE:** Glossy





**Wall**

1048  
1048 DECOR  
\_Size : 600x1200mm

**Floor**

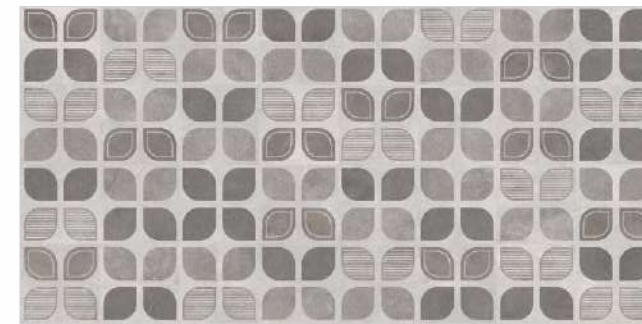
1049  
\_Size : 600x1200mm



1049



1047



1048 DECOR



1046 DECOR



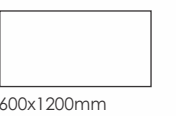
1048



1046

**Glazed Vitrified Tiles**

**THICKNESS:** 9 mm  
**SURFACE:** Glossy



600x1200mm





1040



1040 DECOR



1041



1072

**Wall**

1040

1040 DECOR

\_Size : 600x1200mm

**Floor**

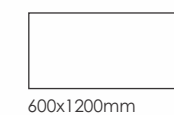
1040

\_Size : 600x1200mm

**Glazed Vitrified Tiles**

**THICKNESS:** 9 mm

**SURFACE:** Glossy



600x1200mm



**Wall**  
 1040  
 1040 DECOR  
 \_Size : 600x1200mm

**Floor**  
 1040  
 \_Size : 600x1200mm

**Glazed Vitrified Tiles**



1000



1039

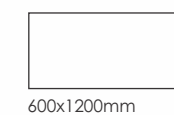


Carrara Vento



Modern Statuario

**THICKNESS:** 9 mm  
**SURFACE:** Glossy



600x1200mm



1045



1053



1056



1043



1044



1052



1057



1042



1051



1055



1059



1065



1050



1054



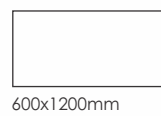
1058



1064

Glazed Vitrified Tiles

THICKNESS: 9 mm  
SURFACE: Glossy



600x1200mm

Glazed Vitrified Tiles

THICKNESS: 9 mm  
SURFACE: Glossy



600x1200mm



**Wall**

1005

\_Size : 600x1200mm

**Floor**

1006

\_Size : 600x1200mm

**Glazed Vitrified Tiles**



1003



1004



1005



1006

**THICKNESS:** 9 mm  
**SURFACE:** Glossy



600x1200mm



Florence White



Ice Dinova



Florence Light Beige



Crema Dinova



Grey Sparkle



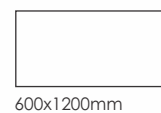
1001



1002

Glazed Vitrified Tiles

THICKNESS: 9 mm  
SURFACE: Glossy



600x1200mm



1007



1011



1008



1012



1009



1013



1010



1014

Glazed Vitrified Tiles

THICKNESS: 9 mm  
SURFACE: Glossy



600x1200mm



1015



1016



1017



1018

**Wall**

1018

\_Size : 600x1200mm

**Floor**

1017

\_Size : 600x1200mm

**Glazed Vitrified Tiles**

**THICKNESS:** 9 mm

**SURFACE:** Glossy



600x1200mm



1019



1021



1020



1022



1023



1033



1024



1034



1031



1035



1032



1036



**Wall**

1019 + 1020

\_Size : 600x1200mm

**Floor**

1020

\_Size : 600x1200mm

**THICKNESS:** 9 mm

**SURFACE:** Glossy



600x1200mm

**Glazed Vitrified Tiles**

**THICKNESS:** 9 mm

**SURFACE:** Glossy



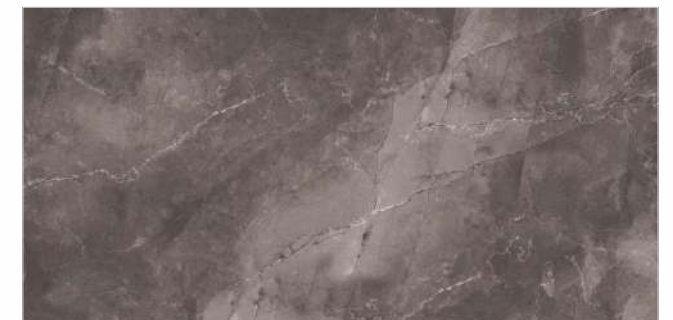
600x1200mm



Pulpis Beige



Pulpis Gris



Pulpis Nero

**Floor**

Pulpis Beige

\_Size : 600x1200mm

Glazed Vitrified Tiles



THICKNESS : 9 mm

SURFACE : Glossy



600x1200mm





Wall

2011

\_Size : 600x1200mm

Floor

???

\_Size : 600x1200mm

THICKNESS : 9 mm

SURFACE : Glossy



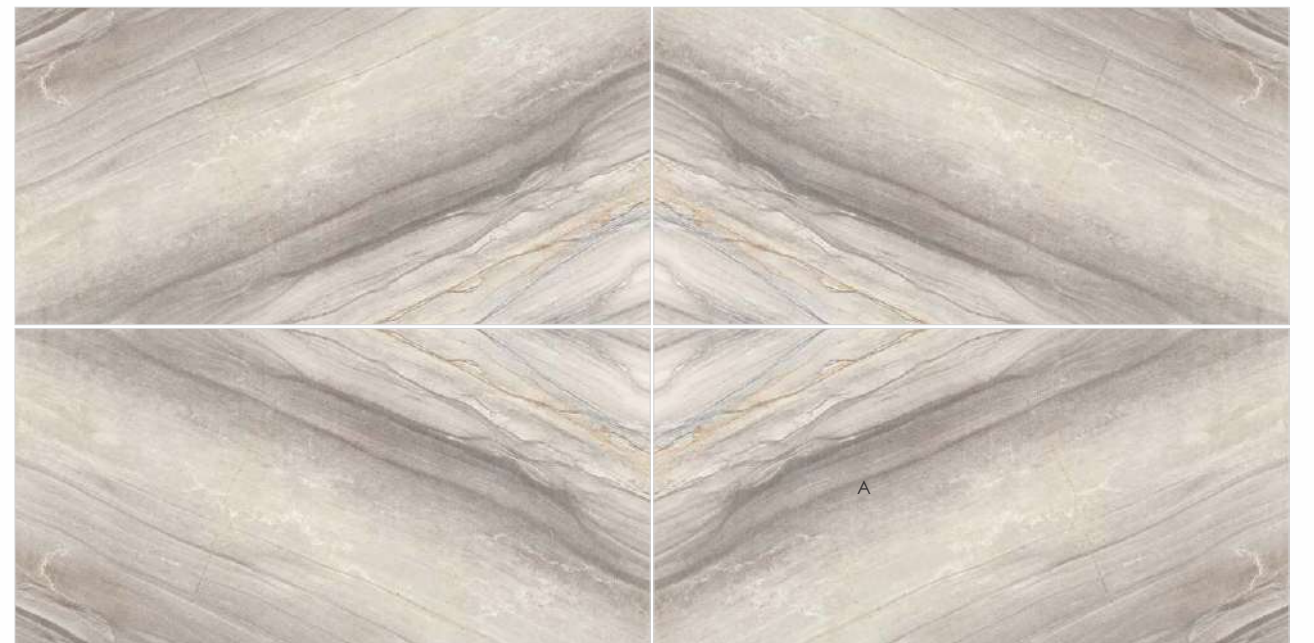
600x1200mm



2001 Bookmatch

B

A



2002 Bookmatch

B

A

Glazed Vitrified Tiles - Bookmatch

THICKNESS : 9 mm

SURFACE : Glossy



600x1200mm



2006 Bookmatch

B

A



2008 Bookmatch

A

B



2007 Bookmatch

A

B



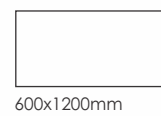
2009 Bookmatch

A

B

Glazed Vitrified Tiles - Bookmatch

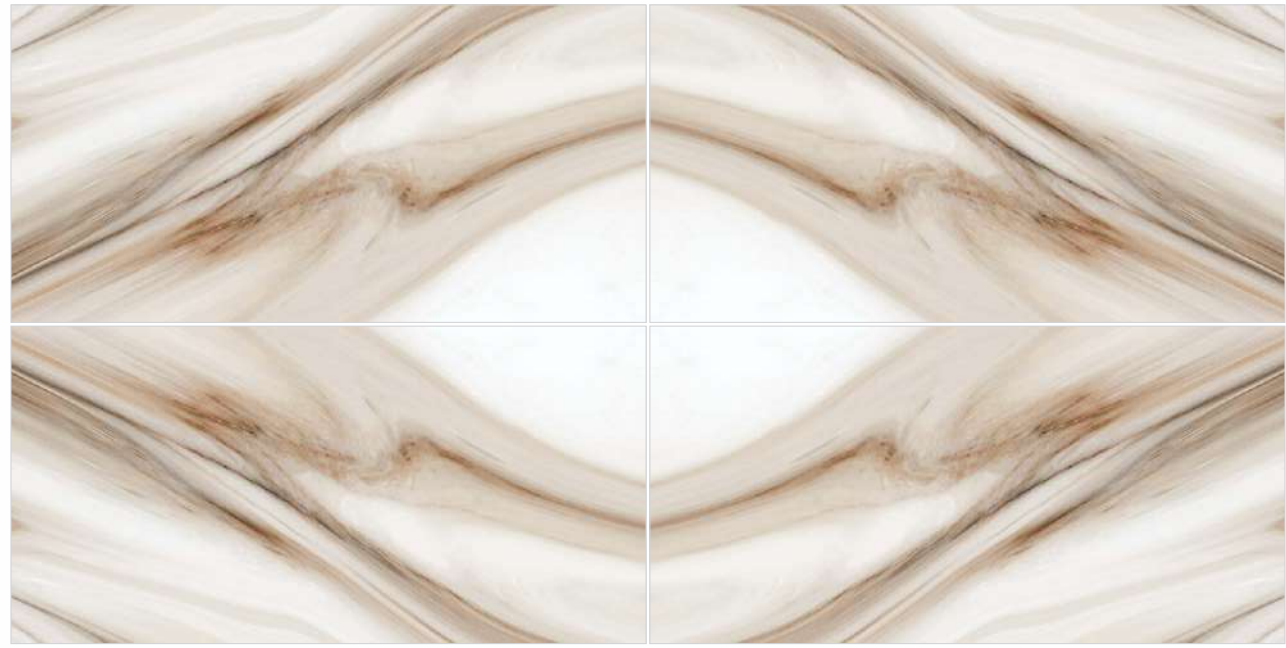
THICKNESS: 9 mm  
SURFACE: Glossy



Glazed Vitrified Tiles - Bookmatch

THICKNESS: 9 mm  
SURFACE: Glossy





2010 Bookmatch

A

B



2011 Bookmatch

A

B



Floor

2010

\_Size : 600x1200mm

THICKNESS: 9 mm

SURFACE: Glossy



600x1200mm



2012 Bookmatch

B

A

Glazed Vitrified Tiles - Bookmatch

THICKNESS: 9 mm

SURFACE: Glossy



600x1200mm



CRV Alder Bay 



CRV Alder Hazel 

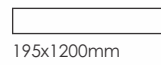


CRV Alder Olive 



Glazed Vitrified Tiles - Wooden Plank

THICKNESS: 9 mm  
SURFACE: Matt



195x1200mm

Floor

CRV Alder Hazel  
\_Size : 195x1200mm

THICKNESS: 9 mm  
SURFACE: Matt



CRV Bruciato Amber 



CRV Bruciato Bay 



CRV Bruciato Hazel 



CRV Curly Amber 



CRV Curly Olive 

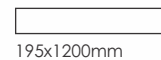


CRV Deep Teak 

Glazed Vitrified Tiles - Wooden Plank

THICKNESS: 9 mm

SURFACE: Matt



195x1200mm



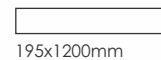
Wall

CRV Curly Amber

\_Size : 195x1200mm

THICKNESS: 9 mm

SURFACE: Matt



195x1200mm



**Floor**

CRV Knotty Pine  
 \_Size : 195x1200mm

**THICKNESS:** 9 mm  
**SURFACE:** Matt



CRV Pearl Wash



CRV Misty Wash



CRV Shine Curl



CRV Knotty Pine



CRV Shared Amber



CRV Antique Slape



**Glazed Vitrified Tiles - Wooden Plank**

**THICKNESS:** 9 mm  
**SURFACE:** Matt





**Floor**  
 Santo Olive  
 \_Size : 195x1200mm

**THICKNESS:** 9 mm  
**SURFACE:** Matt



195x1200mm

**Glazed Vitrified Tiles - Wooden Plank**

**THICKNESS:** 9 mm  
**SURFACE:** Matt



195x1200mm



Santo Amber



Santo Olive



True Walnut



Country Wood Beige COLOR BODY



Country Wood Coffee COLOR BODY



Art Wood Natural COLOR BODY



Ironwood Beige COLOR BODY



Ironwood Brown COLOR BODY



Ironwood Verde COLOR BODY

Glazed Vitrified Tiles  
- Colorbody Wooden Plank



THICKNESS: 9 mm  
SURFACE: Matt



195x1200mm



Floor  
Art Wood Natural  
\_Size : 195x1200mm

THICKNESS: 9 mm  
SURFACE: Matt



195x1200mm





Kingwood Beige



Kingwood Brown



Bark Wood



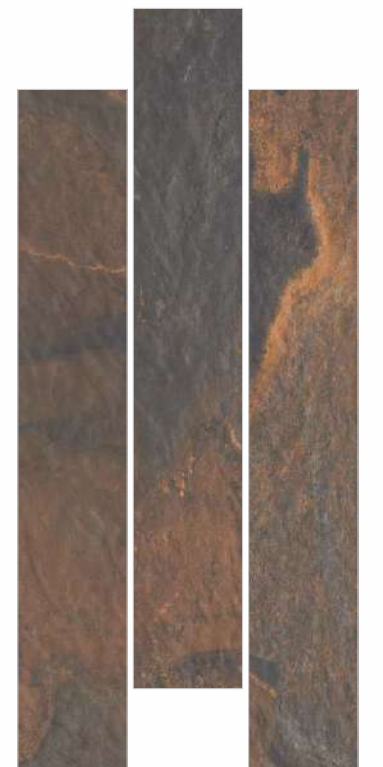
**Floor**

Kingwood Beige  
\_Size : 195x1200mm

**THICKNESS:** 9 mm  
**SURFACE:** Matt



195x1200mm



Slate Nero



**Glazed Vitrified Tiles**  
**- Colorbody Plank**



**THICKNESS:** 9 mm  
**SURFACE:** Matt



195x1200mm



8006



8007



8005



Wall

8005

\_Size : 600x600mm

Floor

8006

\_Size : 600x600mm

THICKNESS : 9 mm

SURFACE : Matt



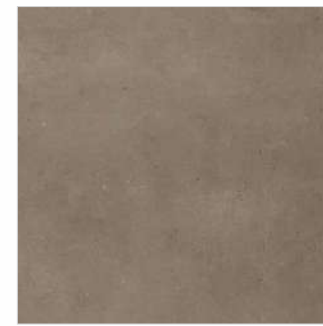
8015



8002



8004



8014



8001



8003



8009



8011



8008

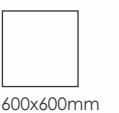


8010

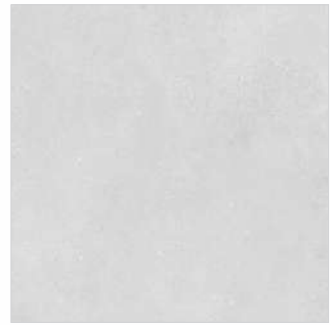
Glazed Vitrified Tiles

THICKNESS : 9 mm

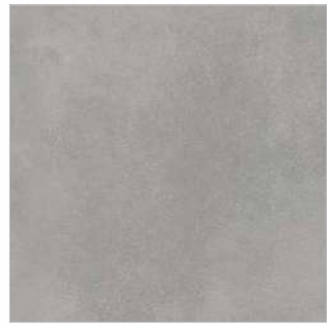
SURFACE : Matt



600x600mm



8019



8021



8017



8018



8020



8016



8022



8025



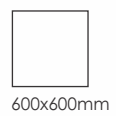
8023



8024

**Glazed Vitrified Tiles**

**THICKNESS:** 9 mm  
**SURFACE:** Matt



600x600mm



8027



8026



**Wall**  
8027  
\_Size : 600x600mm

**Floor**  
8026  
\_Size : 600x600mm

**THICKNESS:** 9 mm  
**SURFACE:** Matt



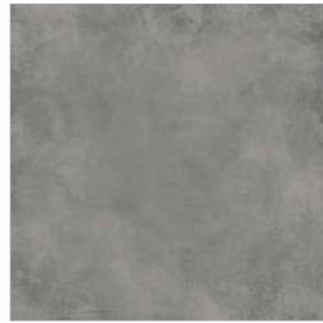
8029



8031



8028



8030



8033



8035



8032

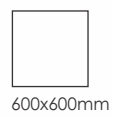


8034



**Glazed Vitrified Tiles**

**THICKNESS:** 9 mm  
**SURFACE:** Matt



**Wall**  
8029  
\_Size : 600x600mm

**Floor**  
8028  
\_Size : 600x600mm

**THICKNESS:** 9 mm  
**SURFACE:** Matt



6040



6007



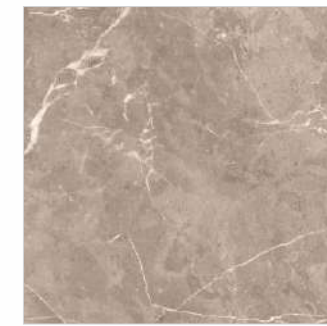
6008



6018



6020



6017



6019



6036



6032



6035



6031



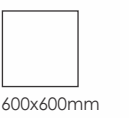
Wall  
6007  
\_Size : 600x600mm

Floor  
6008  
\_Size : 600x600mm

THICKNESS: 9 mm  
SURFACE: Glossy

Glazed Vitrified Tiles

THICKNESS: 9 mm  
SURFACE: Glossy



600x600mm



6024



6023



Wall

6023

\_Size : 600x600mm

Floor

6024

\_Size : 600x600mm

THICKNESS: 9 mm

SURFACE: Glossy



6045



6049



6044



6048



6067



6055



6061



6066



6054

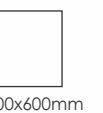


6060

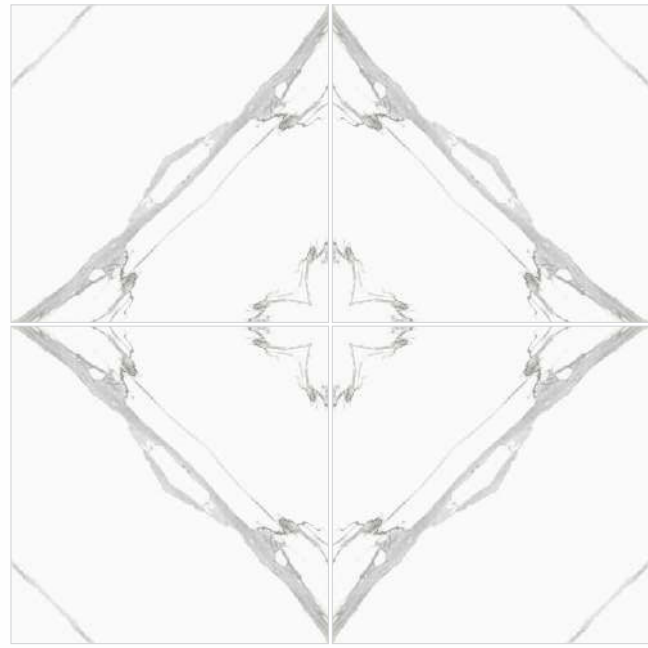
Glazed Vitrified Tiles

THICKNESS: 9 mm

SURFACE: Glossy

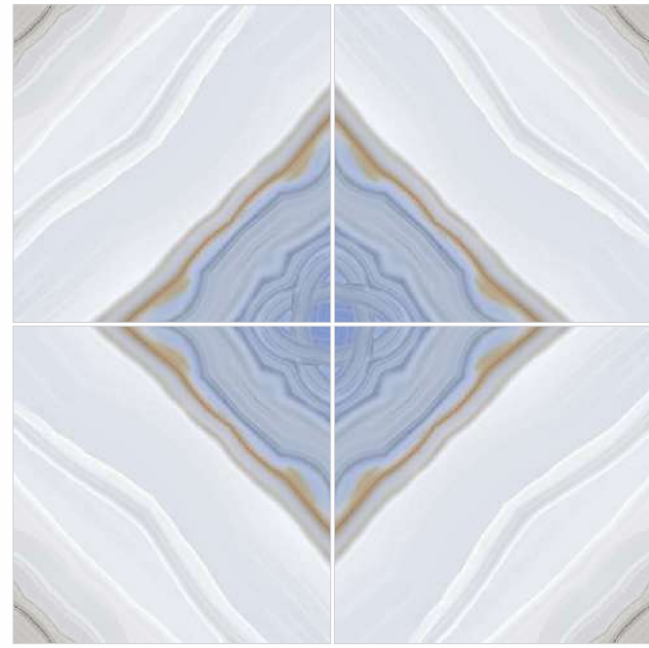


600x600mm



7005

Bookmatch



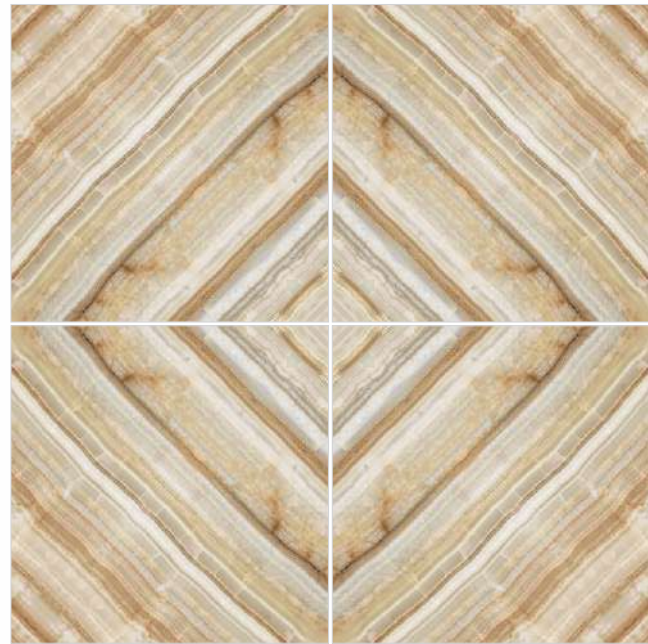
7001

Bookmatch



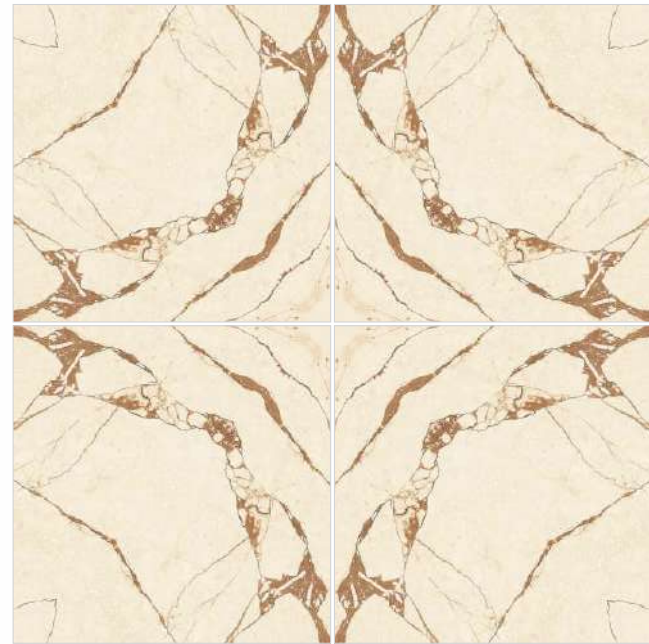
7002

Bookmatch



7003

Bookmatch

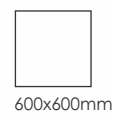


7004

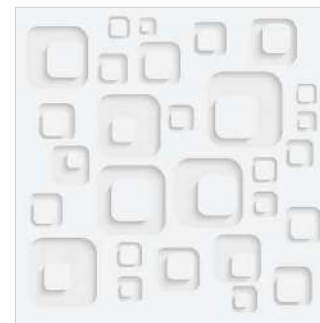
Bookmatch

Glazed Vitrified Tiles - Bookmatch

THICKNESS: 9 mm  
SURFACE: Glossy



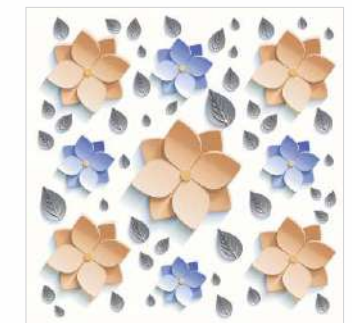
600x600mm



6070 3D



6072 3D



6071 3D



6068 3D



6069 3D

Glazed Vitrified Tiles - Bookmatch & 3D Series

THICKNESS: 9 mm  
SURFACE: Glossy



600x600mm

## Stain Test

AS PER ISO 13006:2018 Gr. Bla			R VALUE RAMP TEST
PRODUCT NAME	CATEGORY	CLASS	CLASS**
SCS	GLOSSY	CLASS-5	NO CLASS
SCS	SATIN MATT	CLASS-3	R 9
GVT	MATT	CLASS-4	NO CLASS
PGVT	GLOSSY	CLASS-4	NO CLASS
DRY GRANULA	GLOSSY	CLASS-5	NO CLASS
DRY GRANULA	SATIN MATT	CLASS-4	R 9
SSS	SATIN MATT	CLASS-4	NO CLASS
SSS	GLOSSY	CLASS-3	NO CLASS
COPOS / GRANOS	POLISH	CLASS-3	NO CLASS
COPOS / GRANOS	MATT	CLASS-4	R 9
ROCK DECK	R9	CLASS-4	R 9
ROCK DECK	R10	CLASS-3	R 10
ROCK DECK	R11	CLASS-3	R 11
<b>Class-5 Cleaning Agent:</b>	Water / Hot Water		
<b>Class-4 Cleaning Agent:</b>	Colin/Thinner/Weak cleaning agent (a commercial agent), not containing abrasive, with a pH of 6,5 to 7,5.		
<b>Class-3 Cleaning Agent:</b>	Red Harpic/Strong cleaning agent (a commercial cleaning agent), containing abrasive, with a pH of 9 to 10.		

\* Immediate cleaning action is the best way

\* chemicals reference are for first suggestion for any details contact company personnel

# do not use these chemicals without considering expert suggestions

\*\* The group classification give the parameter for determine the sliding resistance: the group R 9 is less anti-slip, the group R 13 as the maximum effectiveness anti-slipA

## Technical Specification

CHARACTERISTIC	STANDARD AS PER ISO13006:2018/EN14411 Gr.Bla	STANDARD AS PER IS15622:2017 Gr.Bla	MEAN VALUE	TEST METHOD
<b>Regulatory Properties</b>				
Deviation in length and width	± 0.30 % (±1.00mm)	± 0.10 %	± 0.10 %	ISO 10545-2 & IS 13630-1
Deviation in thickness	± 5.00 % (±0.50mm)	± 5.00 %	± 4.00 %	ISO 10545-2 & IS 13630-1
Straightness in side	± 0.30 % (±0.80mm)	± 0.10 %	± 0.10 %	ISO 10545-2 & IS 13630-1
Rectangularity	± 0.30 % (±1.50mm)	± 0.10%	± 0.10 %	ISO 10545-2 & IS 13630-1
Surface flatness central curvature	± 0.40 % (±1.80mm)	± 0.50 %	± 0.20 %	ISO 10545-2 & IS 13630-1
Surface flatness edge curvature	± 0.40 % (±1.80mm)	± 0.50 %	± 0.20 %	ISO 10545-2 & IS 13630-1
Surface flatness warpage	± 0.40 % (±1.80mm)	± 0.50 %	± 0.10 %	ISO 10545-2 & IS 13630-1
Surface quality	> 95% defects free	> 95% defects free	> 95% defects free	ISO 10545-2 & IS 13630-1
Small color difference	ΔE < 0.75	N.A.	ΔE < 0.30	ISO 10545-16
Glossiness (with nano polished)	as per mfg.	as per mfg.	> 90°	Glossmeter 60°
Glossiness (without polished)	as per mfg.	as per mfg.	3° < GLOSS < 7°	Glossmeter 60°
Glossiness (satin)	as per mfg.	as per mfg.	7° < GLOSS < 18°	Glossmeter 60°
<b>Structural Properties</b>				
Water absorption	≤ 0.50 %	≤ 0.080 %	≤ 0.060 %	ISO 10545-3 & IS 13630-2
Bulk density	as per mfg.	Min. 2.20 g/cc	> 2.28 gm/cc	ISO 10545-3 & IS 13630-2
<b>Massive Mechanical Properties</b>				
Modulus of rupture	Min. 35 N/mm <sup>2</sup>	Min. 35 N/mm <sup>2</sup>	Min. 40 N/mm <sup>2</sup>	ISO 10545-4 & IS 13630-6
Breaking strength thickness <7.5	Min. 700.0 N	Min. 700.0 N	Min. 1000.0 N	ISO 10545-4 & IS 13630-6
Breaking strength thickness ≥7.5	Min. 1300.0 N	Min. 1100.0 N	Min. 1800.0 N	ISO 10545-4 & IS 13630-6
<b>Surface Mechanical Properties</b>				
MOH'S hardness #	as per mfg.	Min. 5	PGVT - Min. 4 / GVT - Min. 6	EN 101 & IS 13630-13
Surface abrasion resistance-Glossy #	as per mfg.	Min. Class II	Min. Class 2 / Min. Class II	ISO 10545-7 & IS 13630-11
Surface abrasion resistance-Matt #	as per mfg.	Min. Class II	Min. Class 4 / Min. Class IV	ISO 10545-7 & IS 13630-11
<b>Thermal Hydrometric Properties</b>				
Moisture expansion	Max. 0.06% (0.6mm/m)	Max. 0.02mm/m	Max. 0.02mm/m	ISO 10545-10 & IS 13630-3
Thermal expansion(COE) at 100°C	as per mfg.	Max. 6.0 x 10 <sup>-6</sup>	Max. 6.0 x 10 <sup>-6</sup>	ISO 10545-8 & IS 13630-4
Thermal shock resistance	Min. 10 Cycle	Min. 10 Cycle	Min. 10 Cycle	ISO 10545-9 & IS 13630-5
Crazing resistance at 7.5 Bar	as per mfg.	Min. 4 Cycle	Min. 6 Cycle	ISO 10545-11 & IS 13630-9
Impact resistance(COR)	Min. 0.55	Min. 0.55	Min. 0.55	ISO 10545-5 & IS 13630-14
Frost resistance	as per mfg.	as per mfg.	Frost Proof	ISO 10545-12 & IS 13630-10
<b>Chemical Properties</b>				
Resistance to staining glazed	Min. Class 3	Min. Class I	Min. Class 4/Min. Class I	ISO 10545-14 & IS 13630-8
Resistance to household chemicals & swimming pool salts glazed	Min. Class GB	Min. Class AA	Min. Class GA/Min. Class AA	ISO 10545-13 & IS 13630-8
Resistance to low concentrate acid and alkalis glazed	as per mfg.	as per mfg.	Min. Class GLB***/Min. Class A***	ISO 10545-13 & IS 13630-8
Resistance to high concentrate acid and alkalis glazed	as per mfg.	as per mfg.	Min. Class GHB***/Min. Class A***	ISO 10545-13 & IS 13630-8
<b>Safety Properties</b>				
Skid resistance(DCOF-DRY)	as per mfg.	as per mfg.	Polished <0.30   Satin/Matt >0.40	ANSI/NFSI B101.3-2012
Slip resistance(DCOF) ( R value )##	as per mfg.	as per mfg.	R9 to R13	DIN 51130
Determination of lead & cadmium release for glazed tiles	as per mfg.	N.A.	Dose not yield Pb & Cd	ISO 10545-15
Fire resistance	as per mfg.	as per mfg.	Fire Proof	N.A.

\* For Matt & Satin Finished

\*\* With nano technology (Polished Vitrified tiles) Depending on Application area (low or high intensity of traffic)

\*\*\* Except Hydrofluoric Acid & it's compound

# Glaze tiles Intended for use on floor

## As per customer requirement