



# HOSPITAL PRODUCTS



Imaging

Patient Room

Fall Prevention

Operating Room

Specialty Seating

Labor & Delivery

Emergency Room

Mattress & Bed Systems



844-260-9090

[www.hypnosmed.com](http://www.hypnosmed.com)

# OR & ER STRETCHER PAD & IMAGING TABLE PAD CONFIGURATIONS

CALL TO ORDER - 844-260-9090



**MODEL 5003**  
Shown - One Section 3"  
\*\*See Options Below

**MODEL 5023-GU**  
Shown - Two Section 3"  
\*\*See Options Below

**MODEL 5033-GU**  
Shown - Three Section 3"  
\*\*See Options Below

**GEL-FLEX™ OVERLAY**

**MODEL BC1000**

## CHOOSE A CONFIGURATION

OR & ER stretcher & imaging table pads for every configuration and manufacturer.

INCLUDING:

AMSCO® • MAQUET® • MIDMARK®  
SHAMPAIGNE® • SIEMENS®  
SKYTRON® • GE® • PHILLIPS®

### THICKNESS OPTIONS



### ONE SECTION

MODEL
5001 (1")
5002 (2")
5003 (3")
5004 (4")

### TWO SECTION

MODEL	MODEL	MODEL	MODEL	MODEL
5021 (1")	5021-GU(1")	5021-GUF(1")	5021-GUBF(1")	
5022 (2")	5022-GU(2")	5022-GUF(2")	5022-GUBF(2")	
5023 (3")	5023-GU(3")	5023-GUF(3")	5023-GUBF(3")	
5024 (4")	5024-GU(4")	5024-GUF(4")	5024-GUBF(4")	

### THREE SECTION

MODEL	MODEL	MODEL	MODEL
5031 (1")	5031-GU(1")	5031-GUF(1")	5031-GUBF(1")
5032 (2")	5032-GU(2")	5032-GUF(2")	5032-GUBF(2")
5033 (3")	5033-GU(3")	5033-GUF(3")	5033-GUBF(3")
5034 (4")	5034-GU(4")	5034-GUF(4")	5034-GUBF(4")

### OR & ER STRETCHER & IMAGING TABLE CONFIGURATION CHART

SECTIONS:	1 • 2 • 3 • 4
THICKNESS:	1" • 2" • 3" • 4"
STOCK SIZES:	ALL MANUFACTURERS AND CONFIGURATIONS
CUSTOM SIZES:	CUSTOM SIZES AVAILABLE, PLEASE SEE ORDER FORM
CUT-OUTS:	PERINEAL CUT OUTS - CAN BE CUSTOMIZED GU (STANDARD CUT OUT BODY SECTION), GUF (CUT OUT FOOT SECTION), GUBF (CUT OUT BODY AND FOOT SECTION)
CORE OPTIONS:	FOAM (F) • VISCOTEC™ (VT) • SOFT-FLO™ GEL (SFG) • GEL-FLEX™ (GF) • GEL-FLEX™ CHANNEL (GFC)
	HONEYCOMB (SCHC) • SOFT-CUBE™ GEL (SCG) • GEL/FOAM - VISCO GEL/SWIRL (VGS) • VISCO GEL/BEADS (VGB) • AIR (GRZ)
COVER OPTIONS:	MEDICAL GRADE VINYL • CONDUCTIVE UL® • NON-CONDUCTIVE • VYVEX-I™ • VYVEX-II™ • VYVEX-III™ • NON-SKID
CORNER OPTIONS:	SQUARE • ROUND • CUT-OFF

Amasco® is a registered trademark of American Sterilizer Company. Maquet® is a registered trademark of Maquet GmbH. Midmark® is a registered trademark of Midmark Corporation. Shampagne® is a registered trademark of Calpine USA, Inc. Siemens® is a registered trademark of Siemens AG. Skytron® is a registered trademark of Skytron LLC. GE® is a registered trademark of General Electric Company. Philips® is a registered trademark of Koninklijke Philips Electronics N.V.

# CORE, COVER, CORNER & CLOSURE OPTIONS

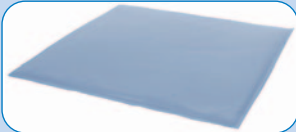
CALL TO ORDER - 844-260-9090

## CHOOSE A CORE



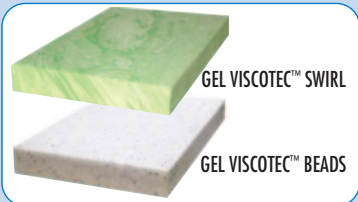
### GEL-FLEX™

Flexible semi-solid Gel excellent for long surgical procedures. Provides superior pressure redistribution, available in .25", .50", .625", 1"



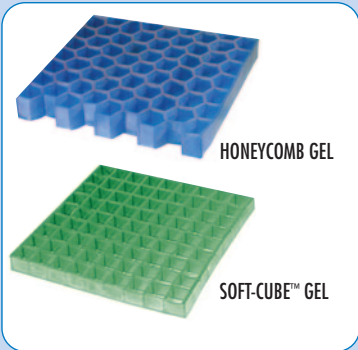
### SOFT-FLO™ GEL

Aqueous Gel forms to encapsulate the bony prominences. Provides excellent pressure redistribution



### GEL IMPREGNATED FOAM

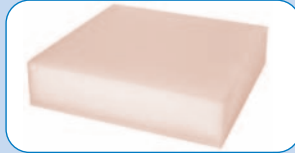
Foam impregnated with gel provides excellent pressure redistribution. Encapsulates bony prominences



### GEOMETRIC GEL

Hollow columns of solid gel in geometric shapes create pressure redistributing cells that deliver proper support. Special Soft-Cube™ heel gel for maximum protection against the incidence of heel ulcers

Customizable OR, ER, Stretcher & Imaging Table pads for your application.



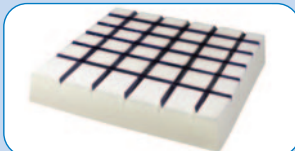
### PPF™ - PRESSURIZED POLYMER FOAM

PPF™ is a polyurethane foam which greatly reduces the sag factor (deflection) enhancing the product's life & extending the uncompromising pressure redistributing qualities of our foam



### VISCOTEC™ MEMORY FOAM

Heat sensitive visco elastic memory foam provides superior comfort and pressure redistribution qualities

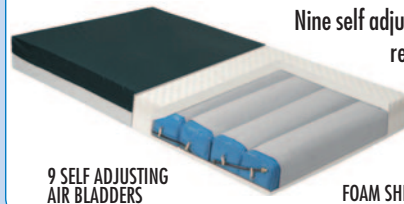


### GEL-FLEX™ CHANNEL

Combination of PPF™ foam and Gel-Flex™ provides excellent comfort and support for bariatric patients

## GRZ™ NON-POWERED AIR

### VYVEX-I COVER



### GRZ™ NON-POWERED SELF ADJUSTING AIR

Nine self adjusting air bladders encapsulated in a high resiliency foam shell. 25" minimum width by any length, 4.95" height. Converts to powered system with optional pump

OPTIONAL PUMP  
MODEL 4610



## CHOOSE A COVER - CONDUCTIVE UL® OR NON-CONDUCTIVE

### MEDICAL GRADE VINYL

Offered in a range of colors, medical grade vinyl covers are fluid proof, anti-microbial and hypo-allergenic

### NON-CONDUCTIVE VINYL

Non-conductive infection control covers are available in navy and black leatherette. Fluid-proof, anti-microbial and hypo-allergenic

### CONDUCTIVE UL®

For surgical applications, covers are fluid-proof, anti-microbial & hypo-allergenic. Available in Vyvex-III™ stretch & vinyl

### VYVEX I™

Nylon PVC-backed fabric, fluid proof, low shear, low friction, anti-microbial, stain resistant & washable

### VYVEX II™

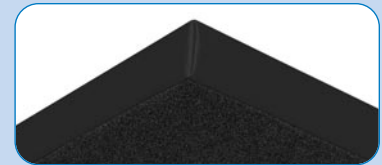
Nylon Butyl-backed fabric, fluid proof, low shear, low friction, anti-microbial, stain resistant and washable

### VYVEX III™

4-way stretch urethane coated, fluid proof, low shear, low friction, anti-microbial, stain resistant and washable

### NON-SKID BOTTOM

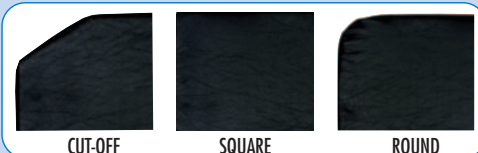
Durable non-skid pebbled bottom cover material can be added to help prevent accidental falls due to sliding or shifting during transfers



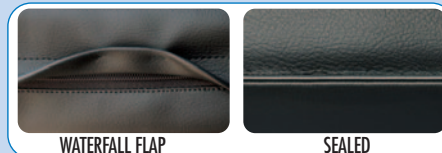
ALL COVERS ARE ANTI-MICROBIAL AND MEET CALIFORNIA TECHNICAL BULLETIN #117 FOR FIRE RETARDANCY

## CHOOSE CORNER, CLOSURE & OPTIONS

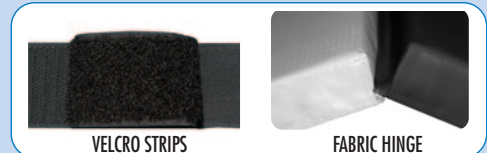
### CORNER STYLES



### CLOSURE STYLES



### OPTIONS





# HEAD & NECK POSITIONERS

CALL TO ORDER - 844-260-9090



## ADULT / PEDIATRIC / NEONATAL HORSESHOE

DESC: Gel-Flex™ Durable, wipes clean, anti-bacterial, non-allergenic  
 USE: Support, elevation, pressure redistribution and proper alignment of the head and neck. Easy access for tubes

BC-1016	2" x 3" ID x 8" OD	Adult
BC-1016B	3" x 3" ID x 8" OD	Bariatric
BC-1019	1.25" x 2.25" ID x 5.50" OD	Ped
BC-1048	0.75" x 1.50" ID x 3.50" OD	Neo



## ADULT / PEDIATRIC / NEONATAL DONUT

DESC: Gel-Flex™ Durable, wipes clean, anti-bacterial, non-allergenic  
 USE: Support, elevation, pressure redistribution and proper alignment of the head and neck

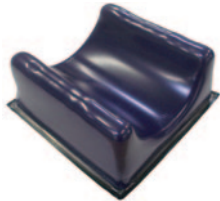
BC-1005	2" x 3" ID x 8" OD	Adult
BC-1005B	3" x 3" ID x 8" OD	Bariatric
BC-1018	1.25" x 2.25" ID x 5.50" OD	Ped
BC-1047	0.75" x 1.50" ID x 3.50" OD	Neo



## RICHARD TYPE HEAD REST

DESC: Gel-Flex™ Durable, wipes clean, anti-bacterial, non-allergenic  
 USE: Support, elevation, pressure redistribution and proper alignment of the head and neck

BC-1036	3" x 9" x 8"
BC-1036-0	4.25" x 9" x 8" "T"



## CONTOURED HEAD REST

DESC: Gel-Flex™ Durable, wipes clean, anti-bacterial, non-allergenic  
 USE: Support, elevation, pressure redistribution and proper alignment of the head and neck

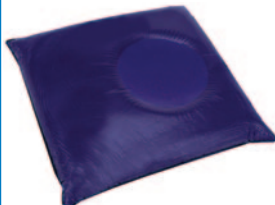
BC-1100	7" x 7" x 3.75"
---------	-----------------



## PRONE SUPINE HEAD REST

DESC: Gel-Flex™ Durable, wipes clean, anti-bacterial, non-allergenic  
 USE: Support, elevation, pressure redistribution and proper alignment of the head and neck

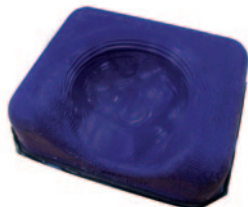
BC-1037	6" x 9" x 11" Cutout for Aen tubes
---------	------------------------------------



## SUPINE & LATERAL HEAD PAD WITH DISH

DESC: Gel-Flex™ Durable, wipes clean, anti-bacterial, non-allergenic  
 USE: Support, elevation, pressure redistribution and proper alignment of the head and neck

BC-1044	2" x 9" x 10" (Supine adult)
BC-1042	1" x 9" x 10" (Lateral adult)
BC-1055	2" x 6" x 7" (Supine pediatric)
BC-1056	1" x 6" x 7" (Lateral pediatric)
BC-1057	2" x 4" x 5" (Supine neo-natal)
BC-1058	1" x 4" x 5" (Lateral neo-natal)



## OPHTHALMIC HEAD REST

DESC: Gel-Flex™ Durable, wipes clean, anti-bacterial, non-allergenic  
 USE: Support, elevation, pressure redistribution and proper alignment of the head and neck for ophthalmic procedures

BC-1114	12" x 10" x 3.875"
---------	--------------------



## ADULT HEAD CRADLE

DESC: PPF™ Blue Foam  
 USE: Support, elevation, pressure redistribution and proper alignment of the head and neck. Designed for use in lateral supine or prone position

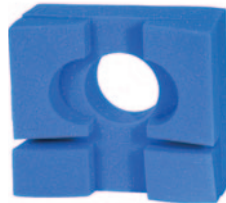
BC-11210	8" x 9" x 4"
----------	--------------



## PEDIATRIC HEAD CRADLE

DESC: PPF™ Blue Foam  
 USE: Support, elevation, pressure redistribution and proper alignment of the head and neck. Designed for use in lateral supine or prone position

BC-11213	6" x 7" x 3.5"
----------	----------------



## SLOTTED HEAD CRADLE

DESC: PPF™ Blue Foam  
 USE: Support, elevation, pressure redistribution and proper alignment of the head and neck. Designed to accommodate an endotracheal tube

BC-11212	8" x 8.5" x 4"
----------	----------------



## ADULT & PEDIATRIC RING POSITIONERS

DESC: PPF™ Blue Foam  
 USE: Support, elevation, pressure redistribution and proper alignment of the head and neck

BC-11202	1.5" x 7"
BC-11201	1.75" x 9"



## ADULT & PEDIATRIC RING POSITIONERS

DESC: PPF™ Foam, Black conductive vinyl, flame retardant, water resistant seams, cleans easily  
 USE: Support, elevation, pressure redistribution and proper alignment of the head and neck

BC-IR-10C-4ID	2" x 10" x 4" ID
BC-IR-9C-4ID	2" x 9" x 4" ID



## ADULT & PEDIATRIC RING POSITIONERS

DESC: Charcoal foam, uncovered  
 USE: Support, elevation, pressure redistribution and proper alignment of the head and neck

BC-IR-10-4ID-NC	2" x 10" x 4" ID
BC-IR-9-4ID-NC	2" x 9" x 4" ID



## ADULT & PEDIATRIC RING POSITIONERS

DESC: PPF™ Foam, Black conductive vinyl, flame retardant, water resistant seams, cleans easily  
 USE: Support, elevation, pressure redistribution and proper alignment of the head and neck

BC-IR-10C-6ID	2" x 10" x 6" ID
---------------	------------------

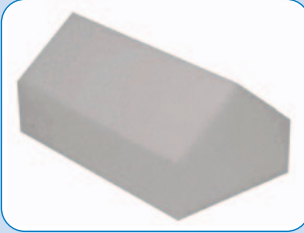
# BODY POSITIONERS

CALL TO ORDER - 844-260-9090

## FOAM BODY POSITIONERS

Cover: Grey Chemsafe™ Vinyl, Leatherette (See Color Chart)

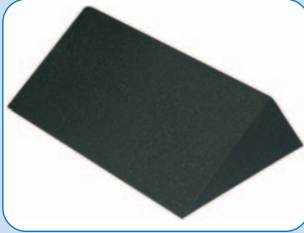
Core: High Density Urethane foam.



### KNEE ELEVATOR

Shown with grey vinyl cover

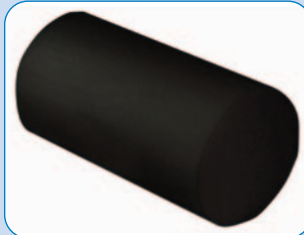
KW-100	17L" x 10H" x 8W"
--------	-------------------



### BODY ALIGNER

Shown with black vinyl cover

BA-100-CHAR	23W" x 8H" x 9.5D"
BA-100-V	23W" x 8H" x 9.5D"



### POSITIONING BOLSTER ROLL

Shown with black vinyl cover

PBR-106V	10" x 6"
PBR-175V	17" x 5"
PBR-206V	20" x 6"
PBR-246V	24" x 6"

## BED WEDGES

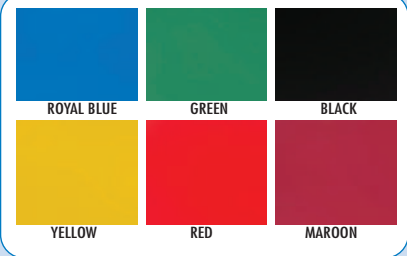
Shown with royal blue vinyl cover

Cover: Grey Chemsafe™ vinyl, Non-Conductive or Leatherette (See Color Chart), Conductive UL® Material or Uncovered  
Core: High Density PPF™ Polyurethane Foam

BW-475V	24"D x 26"W x 7.5"H
BW-410V	24"D x 26"W x 10"H
BW-412V	24"D x 26"W x 12"H

Custom sizes available

## VINYL COLORS



Optional Non-skid Bottom available on all Body Positioners & Bed Wedges

## GEL-FLEX™ BODY POSITIONERS

DESC: Gel-Flex™, durable, wipes clean, anti-bacterial non-allergenic

USE: Pressure redistribution, Positioning



### PEDIATRIC CHEST ROLL

BC-1222	12" x 2" x 2"
BC-1233	12" x 3" x 3"
BC-0022	10" x 2" x 2"
BC-0033	10" x 3" x 3"
BC-0822	8" x 2" x 2"
BC-0833	8" x 3" x 3"
BC-0622	6" x 2" x 2"
BC-0633	6" x 3" x 3"
BC-0422	4" x 2" x 2"
BC-0433	4" x 3" x 3"

### CHEST POSITIONER LEFT & RIGHT

BC-1045S	3" x 8" x 23/28"
----------	------------------

### CHEST POSITIONER LEFT

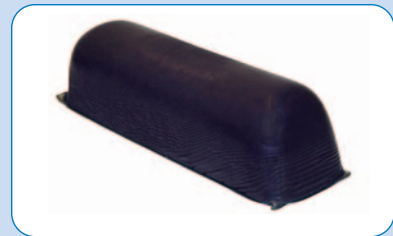
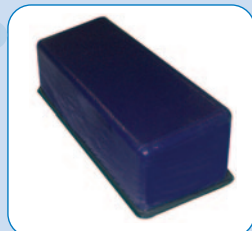
BC-1045L	3" x 8" x 23/28"
----------	------------------

### CHEST POSITIONER RIGHT

BC-1045R	3" x 8" x 23/28"
----------	------------------

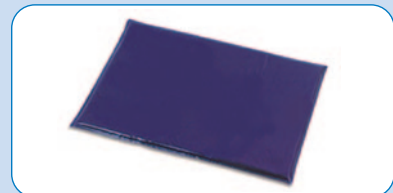
### ADULT CONTOURED CHEST ROLL

BC-1111	20" x 6.25" x 5"
BC-1112	16" x 6.25" x 5"
BC-1113	12" x 6.25" x 5"



### ADULT ROUND CHEST ROLL

BC-1030	12" x 4" x 4"
BC-1031	12" x 6" x 6"
BC-1032	16" x 4" x 4"
BC-1033	16" x 6" x 6"
BC-1034	20" x 4" x 4"
BC-1035	20" x 6" x 6"



### GRADUATED THORACIC POSITIONER

BC-1061	14" x 9" x 2.5"
---------	-----------------

# ANKLE, KNEE, LEG, STIRRUP & SPECIALTY POSITIONERS

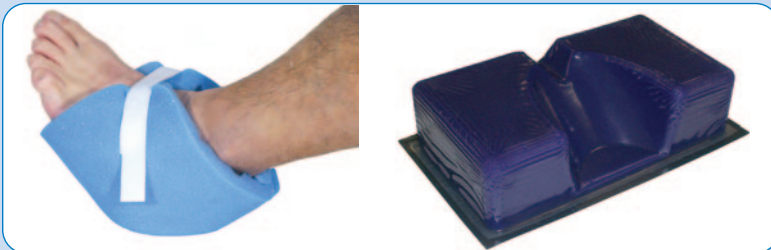
CALL TO ORDER - 844-260-9090

## ABDUCTION PILLOWS

DESC: PPF™ Blue Foam, velcro straps

USE: Provides abduction of legs following hip surgery

BC-11323	12" x 18"	Small
BC-11322	17" x 22.5" H	Medium
BC-11321	18" x 25" H	Large



### HEEL PROTECTORS

DESC: PPF™ Blue Foam, Velcro straps

USE: Heel protection

BC-11306	8" x 7"	Pair/Folded
----------	---------	-------------

### HEEL CUP

DESC: Gel-Flex™ Durable, wipes clean, anti-bacterial, non-allergenic

USE: Maximum pressure redistribution by removing pressure from heels

BC-1046	1.75" x 3.25" x 6"
---------	--------------------

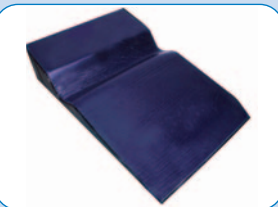


BC-1068	1.5" x 6" x 4.5"	Ped
BC-1069	1.5" x 8" x 4.5"	Ped
BC-1071	2.5" x 6" x 4.5"	Ped
BC-1075	1.5" x 12" x 4.5"	Adult
BC-1076	2" x 4.5" x 12"	Adult
BC-1039	1.5" x 12" x 16"	Adult
BC-1029	2.5" x 5" x 14"	Adult

### SANDBAGS - ADULT AND PEDIATRIC

DESC: Gel-Flex™ Durable, wipes clean, anti-bacterial, non-allergenic

USE: Optimizes position and accessibility for surgical procedures



### LATERAL POSITIONER

DESC: Gel-Flex™ Durable, wipes clean, anti-bacterial, non-allergenic

USE: Optimizes position and accessibility for surgical procedures

BC-1066	.50" x 20" x 28"
---------	------------------



### ANDREWS FRAME KNEE PAD

DESC: Gel-Flex™ Durable, wipes clean, anti-bacterial, non-allergenic

USE: Prevents pressure and shearing during surgical procedures

BC-1060	1" x 16" x 22"
---------	----------------

### KNEE CRUTCH PAD

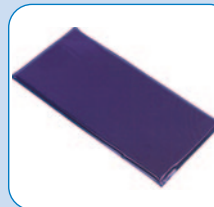
DESC: Gel-Flex™ Durable, wipes clean, anti-bacterial, non-allergenic

USE: Patients in lithotomy position, urology or gynecology procedures

BC-1025	.375" x 9" x 11"	Small
BC-1009	.375" x 11" x 17"	Medium
BC-1008	.50" x 20" x 20"	Large
BC-1038	.50" x 11" x 27"	Extra large

### BARIATRIC KNEE CRUTCH

BC-1052	1" x 9" x 11"	Small
BC-1053	1" x 11" x 17"	Medium
BC-1054	1" x 20" x 20"	Large



### WILSON FRAME PAD

DESC: Gel-Flex™ Durable, wipes clean, anti-bacterial, non-allergenic

USE: Prevents pressure and shearing during surgical procedures

BC-1043	.50" x 10" x 29"
BC-1043S	.50" x 10" x 29" Set



### BARIATRIC LAP BELT PAD

DESC: Gel-Flex™ Durable, wipes clean, anti-bacterial, non-allergenic

USE: Lateral and seating during surgical/medical procedures

BC-1050	.25" x 6" x 36"	Medium
BC-1051	.25" x 7" x 48"	Large



### ANKLE STRAP STIRRUP PAD

DESC: Gel-Flex™ Durable, wipes clean, anti-bacterial, non-allergenic. Comes in pairs.

USE: Patients in lithotomy position, urology or gynecology procedures

BC-1082	.375" x 1.875" x 12.5"	Small
BC-1083	.375" x 1.875" x 17.375"	Large



### CANDY CANE STIRRUP PAD

DESC: Gel-Flex™ Durable, wipes clean, anti-bacterial, non-allergenic

USE: Patients in lithotomy position, urology or gynecology procedures

BC-1027	2" I.D. X 25" Tube
---------	--------------------



# ARM & ELBOW POSITIONERS

CALL TO ORDER - 844-260-9090

## ARMBOARD

DESC: PPF™ Foam, black non-conductive vinyl cover

USE: Supportive padding during procedures

OPT: Thickness: 2", 3", 4"

Core: PPF™ Foam

Core: PPF™ Foam, Viscotec™ Memory Foam & Gel-Flex™

Core: PPF™ Foam, Soft-Flo™ & Viscotec™ Memory Foam

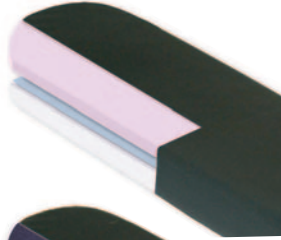
Core: PPF™ Foam & Viscotec™ Memory Foam

Cover: Black conductive vinyl, Vyvex-I™, Vyvex-II™, Vyvex-III™

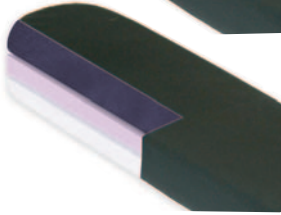
Please specify cover, thickness or core options when ordering

BCAB-624	6" x 24" (2", 3", 4")
BCAB-626	6" x 26" (2", 3", 4")

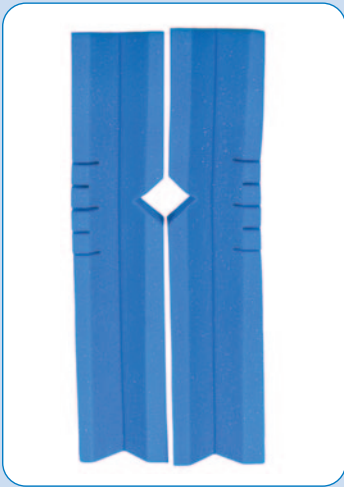
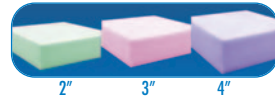
CUTAWAY  
VISCOTEC™  
SOFT-FLO™  
PPF™



CUTAWAY  
GEL-FLEX™  
VISCOTEC™  
PPF™



OPTIONAL CORE THICKNESS



### ARM CRADLE

DESC: PPF™ Blue Foam

USE: Supportive padding during surgery  
Contoured design keeps the arm in place while the notches allow the device to bend with the patient's arm

BC-1331	5" x 23" x 3"
---------	---------------



### CONTOURED ARMBOARD

DESC: Gel-Flex™ Durable, wipes clean, anti-bacterial, non-allergenic

USE: Positioning & pressure relief during surgical procedures

BC-1084	2.25" x 5.75" x 20" Medium
BC-1088	2.25" x 5.75" x 16" Small

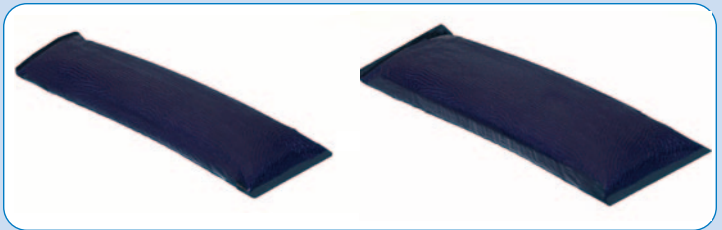


### CONVOLUTED ARM PAD

DESC: Convoluted, PPF™ Blue Foam

USE: Supports and provides protection

BCPF-220	18" x 9" x 2"
BCPF-221	20" x 6" x 2"
BCPF-900	24" x 10" x 2"



### ARMBOARDS

DESC: Gel-Flex™ Durable, wipes clean, anti-bacterial, non-allergenic

USE: Positioning & pressure relief during surgical procedures

BC-1017	.25" x 4" x 15" Small
BC-1118	.25" x 5" x 20" Medium
BC-1006	.25" x 5" x 25" Large

### BARIATRIC ARMBOARDS

DESC: Gel-Flex™ Durable, wipes clean, anti-bacterial, non-allergenic

USE: Positioning & pressure redistribution for surgical procedures

BC-1007	.375" x 6" x 26"- XLarge
BC-1049	.375" x 6" x 15"- XLarge Short



### ELBOW PAD

DESC: Gel-Flex™ Durable, wipes clean, anti-bacterial, non-allergenic

USE: Positioning & pressure distribution for surgical procedures

BC-7710	3.25"OD x 1.50" x .75"
---------	------------------------



### SQUARE ULNAR PAD

DESC: Gel-Flex™ Durable, wipes clean, anti-bacterial, non-allergenic

USE: Provides protection of the ulnar nerve & elbow

BC-1020	3.75" x 11" x 17" Square
---------	--------------------------



### OVAL ULNAR PAD

DESC: Gel-Flex™ Durable, wipes clean, anti-bacterial, non-allergenic

USE: Provides protection of the ulnar nerve & elbow

BC-1021	3.75" x 6" x 18" Oval
---------	-----------------------



### ELBOW PAD PROTECTOR

DESC: PPF™ Blue Foam, velcro straps, non-sterile, radiolucent

USE: Provides protection of the ulnar nerve & elbow

BC-1301	6" x 15.5" x .5" Pair
---------	-----------------------

# HOSPITAL & PATIENT ROOM SUPPORT SURFACES

CALL TO ORDER - 844-260-9090

## LABOR & DELIVERY, PEDIATRIC

### L & D MATTRESS



DESC: PPF™ Polyurethane high density foam with choice of anti-microbial cover  
(See Color Chart - Pg. 3)  
USE: Birthing Bed

BC-BIR	SPECIFY BRAND NAME & MODEL #	CUSTOM SIZES AVAILABLE
--------	------------------------------	------------------------

## HOSPITAL, INSTITUTION, PRISON & DRUG REHAB



### INSTITUTIONAL MATTRESS

DESC: PPF™ Polyurethane high density foam, Medical Grade Vinyl, Sealed seams, Inverted lock-stitch closure. Standard cover grey Chemsafe™ vinyl.  
USE: For Long Term and Acute Care Facilities, Psychiatric, Institutional & Prison

BC-PSY-3680	36" x 80" x 6"	CUSTOM SIZES AVAILABLE
-------------	----------------	------------------------

## SPECIALTY SEATING, DIALYSIS, CHEMO, DENTAL



### BASSINET MATTRESS

DESC: Fire-retardant PPF™ high-compression polyurethane foam, covered in Grey Chemsafe™ Vinyl, Sealed seams  
OPT: Thickness - 1", 2", Cover - Vinyl, Vyvex-I™, Nylon

BC-BASS	SPECIFY SIZE	CUSTOM SIZES AVAILABLE
---------	--------------	------------------------



### WARMER MATTRESS

DESC: PPF™ Polyurethane foam with choice of Grey Chemsafe™ Vinyl or Vyvex-I™ Nylon cover, Sealed seams  
USE: Neo-natal warming mattress

BC-WARM	SPECIFY SIZE	CUSTOM SIZES AVAILABLE
---------	--------------	------------------------



### PEDIATRIC CRIB MATTRESS

DESC: Fire-retardant high-compression PPF™ polyurethane foam, covered in Grey Chemsafe™ Vinyl, Sealed seams  
USE: Hospital and in Home  
OPT: Thickness - 1", 2", 3", Cover - Vinyl, Vyvex-I™ Nylon

BC-PED	26" x 50" x 4"	CUSTOM SIZES AVAILABLE
--------	----------------	------------------------



### GERI GEL RECLINER OVERLAY

DESC: PPF™ Polyurethane foam, Gel, Vyvex-III™ cover  
Non-skid bottom, Supports 250 lbs  
USE: Dialysis & Chemo recliner overlay

6200NS	18" x 70" x 1.75"
--------	-------------------



### GERI GEL BARIATRIC RECLINER OVERLAY

DESC: Gel-Flex™ Channel, Vyvex-III™ Cover / Non-skid bottom  
Supports 800 lbs  
USE: Bariatric recliner overlay

BCGG-6000-BAR	29" x 70" x 4"	CUSTOM SIZES
---------------	----------------	--------------



### COMFORT SUPREME DENTAL CHAIR OVERLAY

DESC: MEDFLEX VPF™, ViscoTec™ Memory foam, Vyvex-III™ Cover / Non-skid bottom,  
USE: Comfort & Pressure redistribution for dental procedures

6600	Navy	64" x 22" - 14" x 3"
6600B	Black	64" x 22" - 14" x 3"
6600R	Rose	64" x 22" - 14" x 3"
6600T	Teal	64" x 22" - 14" x 3"



### GERI CHAIR ALTERNATING PAD & AC/DC PUMP

DESC: Alternating Air Bladders, Vyvex-III™ cover  
USE: Geriatric Recliner comfort & pressure redistribution  
\*Chair not included

9700GR	21" x 70" x 3.5"
--------	------------------



# PRESSURE REDISTRIBUTION POWERED & NON-POWERED MATTRESS & BED SYSTEMS

CALL TO ORDER - 844-260-9090



**POWER-PRO™**  
Alternating Pressure  
with Low Air Loss Mattress System

Model 9500

Model 9500	36" x 80" x 9"	PDAC E0277
------------	----------------	------------

- For the prevention & treatment of stages I - IV pressure ulcers
- Supports 650 lbs.
- Bariatric Models to support up to 1,000 lbs.
- 18 - 9" deep ventilated bladders
- Available widths 36", 42" & 48"
- Vyvex III™ Urethane coated multi-stretch Low shear, fluid proof top cover
- Cover is anti-microbial and fire retardant

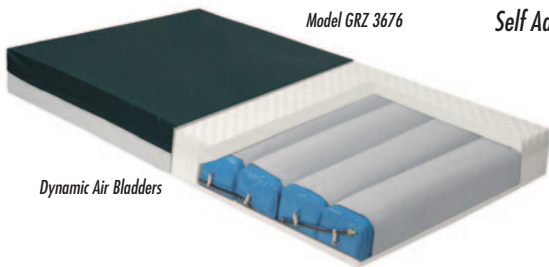


**POWER-TURN™**  
Lateral Rotation Mattress System

Model 9800

Model 9800	36" x 80" x 9"	PDAC E0277
------------	----------------	------------

- For the prevention & treatment of stages I - IV pressure ulcers
- Full Turn, Left Turn, Right Turn, 25° Small Turn & 40° Big Turn
- Supports 650 lbs.
- Bariatric Models to support up to 1,000 lbs.
- 18 - 9" deep ventilated bladders
- Available widths 36", 42" & 48"
- Vyvex III™ Urethane coated multi-stretch Low shear, fluid proof top cover
- Cover is anti-microbial and fire retardant



Model GRZ 3676

**GRZ™**  
Self Adjusting Air Mattress

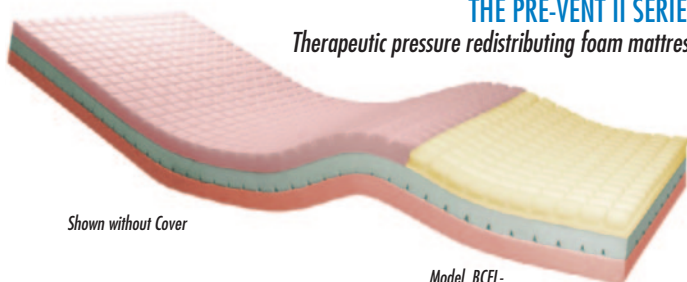
Dynamic Air Bladders



Optional Pump  
Model 4610

Model GRZ 3676	36" x 76" x 7"	PDAC E0277
----------------	----------------	------------

- For the prevention & treatment of stages I - IV pressure ulcers
- Supports 550 lbs.
- Bariatric Models to support up to 1,000 lbs.
- 9 Individual Dynamic Self Adjusting Air bladders
- High Resilience Foam Shell
- Available widths 36", 42", 48", 54", 60"
- Available lengths 76", 80", 84"
- Vyvex I™ Low shear nylon, fluid proof top cover
- Cover is anti-microbial and fire retardant
- Optional Alternating Pressure Pump



**THE PRE-VENT II SERIES®**  
Therapeutic pressure redistributing foam mattresses

Shown without Cover

Model BCEL-

BCEL	Specify Size
------	--------------

- For the prevention & treatment of stages I - II pressure ulcers
- Standard 6" supports 350 lbs.
- Bariatric Models to support up to 1,000 lbs.
- Tri-Laminate Design
- Available widths 36", 39", 42", 48" & 54"
- Available lengths 76", 80", 84"
- Heel Wrap™ PPF™ foam for the prevention of heel ulcers
- Vyvex II™ Low shear nylon, fluid proof top cover
- Foams & cover materials are anti-microbial and fire retardant

# FALL PREVENTION & PATIENT SAFETY PRODUCTS

CALL TO ORDER - 844-260-9090



## SIDE RAIL BUMPER PAD ENVELOPE STYLE

**DESC:** Fire-retardant high-compression PPF™ polyurethane foam, covered in anti microbial vinyl. Protects top rail

**USE:** Protection from injury due to banging or slipping through a bed rail

BCM-211-ENV	11" x 70" x 1"
BCM-211-2-ENV	11" x 70" x 2"
BCM-215-ENV	15" x 60" x 1"
BCM-215-2-ENV	15" x 60" x 2"
BCM-216-ENV	11" x 30" x 2"



## SIDE RAIL BUMPER PAD WITH SEE THROUGH WINDOW

**DESC:** Fire-retardant high-compression PPF™ polyurethane foam, covered in anti microbial vinyl

**USE:** Protection from injury due to banging or slipping through a bed rail

BCM-211-W	11" x 70" x 1"
BCM-211-2-W	11" x 70" x 2"
BCM-215-W	15" x 60" x 1"
BCM-215-2-W	15" x 60" x 2"
BCM-216-W	11" x 30" x 2"



## DEFENDER EDGE FALL MAT

**DESC:** Fire-retardant closed cell foam, Grey Chemsafe™ vinyl cover / non-skid bottom.

**USE:** Fall Protection, edge allow wheelchair access

BCEDG-2566	25" x 66" x 1.5"
BCEDG-3072	30" x 72" x 1.5"



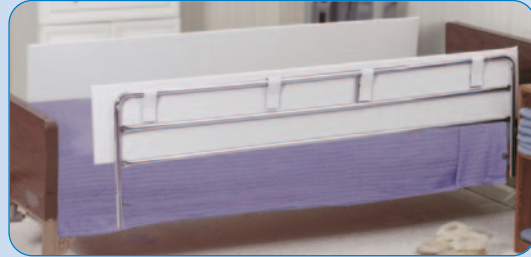
## FALL MAT

**DESC:** Fire-retardant high-compression PPF™ polyurethane foam, medical grade vinyl cover

Available in 2", 3" & 4" in a bi-fold, tri-fold or non-fold design. Non skid bottom

**USE:** Fall Protection

BCFM-2460	24" x 60" x 2"
BCFM-2472	24" x 72" x 2"
BCFM-3072	30" x 72" x 2"
BCFM-3672	36" x 72" x 2"



## SIDE RAIL BUMPER PAD WITH VELCRO STRAPS

**DESC:** Fire-retardant high-compression PPF™ polyurethane foam, covered in anti microbial vinyl

**USE:** Protection from injury due to banging or slipping through a bed rail

BCM-211	11" x 70" x 1"
BCM-211-2	11" x 70" x 2"
BCM-215	15" x 60" x 1"
BCM-215-2	15" x 60" x 2"
BCM-216	11" x 30" x 2"



## NO-GAP SIDE GUARD

**DESC:** Fire-retardant high-compression PPF™ polyurethane foam covered in anti microbial vinyl

**USE:** Protect patients from accidental slippage through gaps between the mattress and side rail

BCNG-72	72" x 2" x 8"
BCNG-36	36" x 2" x 8"



## MATTRESS EXTENDER

**DESC:** Fire-retardant high-compression PPF™ polyurethane foam covered in anti microbial vinyl

**USE:** Used to extend mattress for the needs of a taller patient. Can be customized to fit any bed

BCME-126	6" x 36" x 6"
----------	---------------



## WEDGE GUARD

**DESC:** Fire-retardant high-compression PPF™ polyurethane foam, covered in anti microbial vinyl

**USE:** Side rail gap protector & patient positioner  
Patients are safe from falls and accidental slippage through gaps

BWG-36	HALF RAIL 36"
BWG-70	FULL RAIL 70"

## CHOOSE COLORS



Grey  
(Standard)



Navy  
(Optional)



Green  
(Optional)



Blue  
(Optional)



Tan  
(Optional)

# CUSTOM MEDICAL CART, EQUIPMENT COVERS & PILLOWS

CALL TO ORDER - 844-260-9090



Shown with optional routing pocket

Shown with optional clear front flaps

Customized cart covers for all purposes & equipment manufacturers

Utility Carts  
Crash Carts  
Linen Carts  
Medical Carts  
Case Carts  
Isolation Carts

Guard Rail Carts  
Multi-Shelf Carts  
Emergency Carts  
Anesthesia Carts  
Narcotics Cabinets  
Specialty Carts

Medical Surgical Carts  
Wire Shelf Utility Carts  
Multi-Purpose Carts  
Medical Laptop Carts  
Healthcare Carts  
and More...

Optional: Custom imprint your cart cover upon request. Custom imprint can be silk screened or embroidered.

## HOSPITAL PATIENT PILLOWS

DESC: Hypo-allergenic, high lofted, fire retardant fiber fill. Available covers: vinyl, breathable vinyl, navy nylon and poly-cotton. The nylon and vinyl covers are anti-microbial, and meet California Technical Bulletin #117 for fire-retardancy.



2026V	20" x 24"	Fire Retardant with Anti-Microbial Vinyl Cover
2026B	20" x 24"	Fire Retardant with Breathable Anti-Microbial Vinyl Cover
2026N	20" x 24"	Fire Retardant with Anti-Microbial Nylon Cover

## CHOOSE CLOSURE



VELCRO - STANDARD



ZIPPER - OPTIONAL

## CHOOSE OPTIONS

### ROUTING POCKET

Specify Left Side, Right Side or Front Center



## CHOOSE 400 DENIER NYLON COLOR



## CHOOSE CART COVER FABRIC

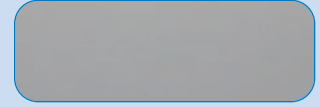
### BALLISTIC NYLON

1000 Denier - Heavy Duty. Available in Royal



### VINYL

See Vinyl Color Chart below



### 400 DENIER NYLON

Available in a large variety of colors. See chart



## CHOOSE VINYL COLORS

