



# CAPSA HEALTHCARE MEDICAL CARTS



CAPSAHEALTHCARE

Avalo® Series Medical Carts  
I-Series Medical Carts

Elevating performance,

# every day.

The best quality healthcare depends on easy access to the right instruments and supplies. Capsa Healthcare puts everything clinicians need at their fingertips with a complete line of fully configurable medical carts designed to promote orderly storage and organization where it matters most.



# Avalo® Series Medical Carts

## Emergency Carts

**The Avalo Series Emergency Cart** defines a new standard of organization and function with a host of features that provide reliable performance and promote improved workflow in emergency departments. The unique breakaway locking handle offers optimal

security and the simple access essential to every emergency response. Stable maneuverability is built-in to every cart and a full line of accessories enhance user efficiency and support code team performance.



*Quick-Access lock offers the security you require and ensures quick access to code cart supplies*

## Pediatric Crash Cart

**The Avalo Series Pediatric Crash Cart** is designed for use with the proven clinical methodology for treating life-threatening emergencies in pediatric patients. When seconds matter, the color coded drawers enable doctors and clinicians to quickly identify critical supplies when responding to pediatric emergencies.

Contents are secured with a breakaway locking handle, yet a simple and swift motion can quickly break the tamper-evident seal giving access to all drawers and emergency supplies.



*Removable drawer trays promote orderly storage and organization of emergency supplies*

# Avalo® Series Medical Carts

## Isolation Carts

**The Avalo Series Isolation Cart** provides innovative features that promote long-term, reliable function and value. Large-volume seamless drawer trays are supported by a unique guide system that ensures consistent performance year after year. Drawers open fully allowing easy access to contents in the rear of the drawer, and stay closed when the cart is in motion.



*Spread Caster Position provides stability control by moving the wheels out toward the corners of the cart frame*

## Treatment Carts

**The Avalo Series Treatment Cart** offers large capacity and flexible organization of treatment supplies in 3", 6", and 10" seamless drawers that feature a unique integrated divider system.

The Avalo Treatment Cart offers a complete choice of accessories including a large-volume waste container and lid, drawer dividers, and innovative organizer options.



## I.V. Therapy Carts

**The Avalo Series I.V. Therapy Cart** promotes the organization of supplies for use in I.V. preparation. Keep everything in its place with an array of optional drawer divider systems and storage bins.

A sturdy work surface offers ample room to efficiently prepare I.V. solutions. Expand your work area with a sizable slide-out work surface, positionable on either the right or left side of the cart.



*Integral Drawer Dividers offer the flexibility to organize and re-arrange drawer contents*



# Avalo® Series Medical Carts

## Procedure Carts

**The Avalo Series Procedure Cart** offers a wide selection of organization accessories, large capacity, and a choice of models in 4-drawer, 5-drawer, or custom configurations. The Avalo Procedure Cart is adaptable to many different healthcare applications including trauma, airway, dressing, cast, or general supply cart. Ensure security with a choice of three (3) proven lock systems including an advanced keyless entry with auto-relock.



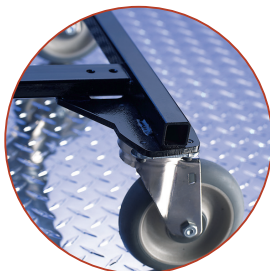
*Seamless Drawer Trays are durable and prevent issues associated with pop rivets or sharp edges found in metal drawers*



## Medical/Surgical Carts

**The Avalo Series Med/Surg Cart** meets the demanding requirements of an ever-changing hospital environment. Every Med/Surg Cart accommodates the latest technology solutions and monitoring equipment to ensure efficient and streamlined workflow.

Select from an array of drawer divider and tray solutions that offer complete flexibility for organizing supplies in each drawer.



*Precision welded all-steel frame is virtually indestructible*





# Avalo® Series Medical Carts

## AC Anesthesia Self-Locking

The **Avalo Series AC Anesthesia Cart** offers the latest design and technology to meet the unique requirements of anesthesia storage, organization and security.

Flexible drawer configurations combined with optional drawer dividers and trays promote orderly storage.

An innovative keyless access and automatic relocking system provides secure and safe storage of anesthesia medications. Add another layer of security with an optional ID Badge card reader, or optical bar code scanner and cart user audit.



**Model ACM**  
In Standard Height



**Model ACS**  
In Compact Height



*Keyless Access with Automatic Relocking and optional security upgrades*

# Avalo® Series Medical Carts

## Standard Anesthesia

The **Avalo Series Standard Anesthesia Cart** is designed with a synergy of function and technology to meet the unique needs of your anesthesia department. The Avalo Anesthesia cart is available in a selection of height options, drawer depths and storage configurations to facilitate workflow.

Flexible divider systems, removable drawer trays, and an array of organization accessories promote orderly storage and organization. A choice of (3) three innovative locking systems ensure that anesthesia medications and supplies are kept secure.



**Drawer Dividers**



**Removable Drawer Trays**



**Drawer Flex Dividers**



## Critical Care Carts

The **Avalo Series Critical Care Cart** is built to promote efficient workflow and task management in critical care environments.

Designed for durability and flexibility, the Avalo Critical Care Cart can be configured to meet your facility requirements. The durable frame and spread caster position ensure stability, while making the cart easy to move and control. A choice of lock systems and full complement of accessory options permit customization to accommodate a variety of monitors, storage units and the security of critical care supplies.



**10 Year Limited Warranty on every Avalo Series Medical Cart**



# Avalo® Series Medical Carts

## Medical Cart Drawer Configurations

### Drawer Configuration\*

### Standard Height

### Intermediate Height

### Compact Height

### Cart Specifications

Applies to model types:

Emergency Anesthesia



	Surf. Height	Depth	Width
<b>Standard Height:</b>	43.0" 110 cm	24" 61 cm	31" 79 cm
<b>Intermediate Height:</b>	39.5" 100 cm	24" 61 cm	31" 79 cm
<b>Compact Height:</b>	36.0" 91 cm	24" 61 cm	31" 79 cm

Applies to model types:

Procedure Treatment  
Critical Care  
I.V. Therapy  
Med/Surg



### Drawer Specifications

Applies to model type:

Isolation



Height	Depth	Width
3" 7 cm	17.5" 45 cm	21.5" 55 cm
6" 16 cm	17.5" 45 cm	21.5" 55 cm
10" 25 cm	17.5" 45 cm	21.5" 55 cm

\*Standard drawer configurations shown, alternative drawer configurations available. Consult with your Capsa Representative for standard cart handle configurations.

Specifications, availability & components are subject to change without notice.

## AC Anesthesia Cart Models

Drawers can be configured to best meet your unique requirements.



### AC Anesthesia Cart Dimensions

<b>Base Width:</b>	ACS:	25.5"	65cm
	ACM:	37.75"	96cm
<b>Base Depth:</b>	ACS:	24"	61cm
	ACM:	24"	61cm
<b>Work Surface Height:</b>	Compact:	39.5"	100cm
	Standard:	43"	110cm





# Avalo® Series Security Features

## Lock System Options

### Lock System Choices

#### AutoLock™

Automatically secures a motionless unlocked medical cart with a user-defined relock time delay from 1-99 minutes. AutoLock permits up to 5,000 individual user codes to further enhance cart access tracking and security. SLA battery operated.

*AutoLock security upgrades available.*



#### Keyless Access with Manual Relocking

Simply enter a 4-digit access code, push down the lock lever and the cart is ready for access. To secure the medical cart, simply push in the lock lever. Clear visual indication of lock status is apparent from a distance.



#### Key Access with Manual Relocking

Featuring the Best® Core Removable Lock System, this basic yet proven lock system provides your medical cart advanced security and the flexibility to change keys simply and easily.



#### Breakaway Lock

Avalo Emergency Cart's unique breakaway locking handle is standard on every model, offers the security you require and ensures quick access to code cart supplies



### AutoLock™ Security Upgrades

#### Keyless Narcotics Storage



*The optional keyless narcotics storage feature greatly augments security to further optimize control and accountability*

*Available for Avalo AC Cart only*

#### Proximity Access



*An advanced proximity card reader can be selected as an additional security access requirement*

#### Standard Host Software



*Using Standard Host Software authorized users can add, change or delete an access code for specific users*

# Avalo® Series Medical Carts

## Options & Accessories



Divided Drawer Tray



Drawer Dividers



Sharps/Glove Holder



Storage Container



Cardiac Board



I.V. Pole



Drawer Tag Holder



Oxygen Tank Holder



Accessory Bridge



Bulk Storage Bins



Tilt Bin Organizers



Tracking Caster



Clear Top Mat



Storage Module



Internal Lock Box



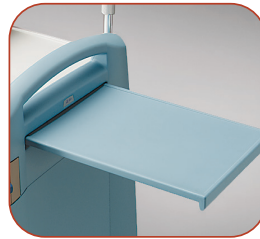
Plug Outlet Strip  
*UL1363A Rated*



Defibrillator Shelf



Waste Container



Writing Surface



Computer Arm

# I-Series Medical Carts

## Fixed Drawer & ISO Storage Tray Flexibility

With over 50 years of cart design innovation and healthcare storage experience, Capsa Healthcare applied its expertise in organization and function to the line of I-Series Medical and Storage Carts.

The maximum flexibility of the I-Series platform is evidenced by a wide array of cart models that



*I-Series carts can accommodate a variety of ISO trays and baskets.*

permit you to configure and accessorize the cart to your exact requirements. This provides your facility a single cart platform that can improve your workflow and storage across multiple applications including:

- Emergency Cart
- Anesthesia Cart
- Procedure Cart
- Treatment Cart
- Isolation Cart
- Med/Surg Cart
- Cast Cart
- Airway Cart
- Supply Cart
- ISO Module Trays & Storage

All I-Series carts are constructed of lightweight aluminum panels, sturdy internal frame, and premium drawer slides to ensure long-term value and durability.



**I-Series Emergency Cart with accessories**



**I-Series Anesthesia Cart with accessories**

# I-Series Medical Carts

## Features & Options

This comprehensive set of standard features is anything but ordinary.

- A** Easy-to-clean seamless removable cart top with raised lip to retain spills
- B** Full complement of optional accessories including cart handle and extended work surface
- C** Choice of three (3) lock systems including keyless access with auto-relock
- D** Cart identification / application labels
- E** Standard drawers or drawer frames for use with ISO 60/40 storage trays (dividers sold separately)
- F** Premium self-closing drawer slides ensure long-term reliability
- G** Lightweight and durable aluminum cabinet surrounding a sturdy integrated frame
- H** Full-width drawer handles
- I** Antimicrobial surfaces inhibit the spread of infectious materials
- J** Integrated bumpers to protect facility walls and equipment
- K** Premium 5" double ball bearing casters with brake and steering caster standard

### Additional product features include:

- Choice of (4) cart model platforms ranging from 34.5" to 43.5" in height to meet all department storage requirements
- Standard or custom drawer configurations, with cart storage packages from three (3) to seven (7) drawers
- Standard drawers or drawer frames for use with ISO 60/40 storage trays
- Simplified cart configuration and added savings through your choice of convenient accessory bundles
- Choice of (6) six colors
- 10 Year Limited Warranty



### Cart Specifications

	Surface Height	Depth	Width
<b>Mini</b>	34.5" / 87.6 cm	24.5" / 62.2 cm	31.5" / 80 cm
<b>Compact</b>	37.5" / 95.2 cm	24.5" / 62.2 cm	31.5" / 80 cm
<b>Intermediate</b>	40.5" / 102.9 cm	24.5" / 62.2 cm	31.5" / 80 cm
<b>Standard</b>	43.5" / 110.5 cm	24.5" / 62.2 cm	31.5" / 80 cm

### Drawer Specifications

	Int. Height	Int. Depth	Int. Width
<b>3"</b>	3" / 7.5 cm	17.25" / 43.8 cm	24" / 61 cm
<b>6"</b>	6.25" / 15.9 cm	17.25" / 43.8 cm	24" / 61 cm
<b>9"</b>	9.6" / 24.4 cm	17.25" / 43.8 cm	24" / 61 cm

Specifications, availability & components are subject to change without notice.

# I-Series Medical Carts

## Configure Your I-Series Cart in Just 4 Steps

### STEP 1: Select your model & drawer package (see page 12)

Choose from four (4) model platforms:



Standard Intermediate Compact Mini

Choose from five (5) standard drawer packages

- 3-drawers to 7-drawers per cart
- Standard or ISO Module tray design
- Custom drawer configurations available

### STEP 2: Select your lock system

Keyless With Auto-Relock



*The optional EMS™ system offers unparalleled security in a proven lock system designed specifically for healthcare carts. This technology upgrade elevates your facility security and protects cart contents with one of the most advanced cart lock systems available.*

- Keyless access with auto-relock
- Permits 250 unique users and supervisors, programmable via keypad or PC
- Optional LockView Software provides the platform for secondary security via proximity card and the ability to audit and manage EMS via a PC

Key Lock



*I-Series standard lock system features a Core Removable Lock.*

Quick Access Lock



*Unique breakaway locking handle offers the security you require and ensures quick access to code cart supplies.*

### STEP 3: Select your color and drawer I.D. label

Choose from our palette of six (6) decorator colors

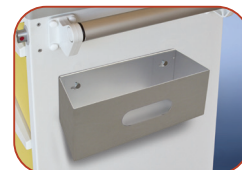


Choose from a selection of drawer ID labels:

- Emergency
- Anesthesia
- Med/Surg
- Treatment
- Isolation
- Procedure

### STEP 4: Select your accessories (see page 13)

Further customize your cart with optional accessories or accessory packages to get the precise storage and organization scheme you require for the application.



# I-Series Medical Carts

## Standard Models & Drawer Packages

Every I-Series Medical Cart model provides a platform of standard features that ensures you get the exact cart size and storage configuration required.

- Cart storage packages from three (3) to seven (7) drawers
- Standard drawers or drawer frames for use with ISO 60/40 storage trays
- Wide selection of workflow, organization, and convenience accessories

### Standard

Maximum capacity, storage room and organization



Shown in Blue

### Intermediate

Exceptional storage in a common cart size



Shown in Green

### Compact

For applications requiring less capacity and smaller size



Shown in White

### Mini

Small cart size but big on storage



Shown in Yellow



**7 Drawer**  
(5) - 3" (7.6cm)  
(1) - 6" (15.9cm)  
(1) - 9" (24.4cm)



**6 Drawer**  
(4) - 3" (7.6cm)  
(1) - 6" (15.9cm)  
(1) - 9" (24.4cm)



**6 Drawer**  
(4) - 3" (7.6cm)  
(2) - 6" (15.9cm)  
(0) - 9" (24.4cm)



**7 Drawer**  
(7) - 3" (7.6cm)  
(0) - 6" (15.9cm)  
(0) - 9" (24.4cm)



**6 Drawer**  
(3) - 3" (7.6cm)  
(2) - 6" (15.9cm)  
(1) - 9" (24.4cm)



**5 Drawer**  
(2) - 3" (7.6cm)  
(2) - 6" (15.9cm)  
(1) - 9" (24.4cm)



**5 Drawer**  
(3) - 3" (7.6cm)  
(1) - 6" (15.9cm)  
(1) - 9" (24.4cm)



**6 Drawer**  
(5) - 3" (7.6cm)  
(1) - 6" (15.9cm)  
(0) - 9" (24.4cm)



**5 Drawer**  
(1) - 3" (7.6cm)  
(3) - 6" (15.9cm)  
(1) - 9" (24.4cm)



**5 Drawer**  
(3) - 3" (7.6cm)  
(0) - 6" (15.9cm)  
(2) - 9" (24.4cm)



**4 Drawer**  
(1) - 3" (7.6cm)  
(2) - 6" (15.9cm)  
(1) - 9" (24.4cm)



**5 Drawer**  
(3) - 3" (7.6cm)  
(2) - 6" (15.9cm)  
(0) - 9" (24.4cm)



**4 Drawer**  
(1) - 3" (7.6cm)  
(0) - 6" (15.9cm)  
(3) - 9" (24.4cm)



**4 Drawer**  
(0) - 3" (7.6cm)  
(3) - 6" (15.9cm)  
(1) - 9" (24.4cm)



**4 Drawer**  
(0) - 3" (7.6cm)  
(4) - 6" (15.9cm)  
(0) - 9" (24.4cm)



**4 Drawer**  
(2) - 3" (7.6cm)  
(1) - 6" (15.9cm)  
(1) - 9" (24.4cm)



**4 Drawer**  
(0) - 3" (7.6cm)  
(2) - 6" (15.9cm)  
(2) - 9" (24.4cm)



**3 Drawer**  
(0) - 3" (7.6cm)  
(0) - 6" (15.9cm)  
(3) - 9" (24.4cm)



**3 Drawer**  
(0) - 3" (7.6cm)  
(1) - 6" (15.9cm)  
(2) - 9" (24.4cm)



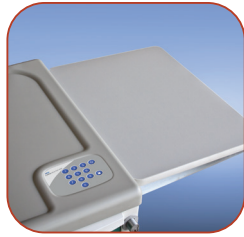
**3 Drawer**  
(0) - 3" (7.6cm)  
(2) - 6" (15.9cm)  
(1) - 9" (24.4cm)

# I-Series Medical Carts

## Accessories, Options & Lock Systems



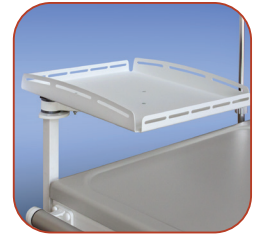
Oxygen Tank Bracket



Extended Work Surface



Waste Container w/ Lid



Defibrillator Shelf



Breaking Caster



Suction Pump Shelf



Cardiac Board



Sharps Container



Cart Handle



Catheter Storage



Accessory Bridge



Bridge Storage Bins



I.V. Pole



Laptop Arm



Plug Outlet Holder



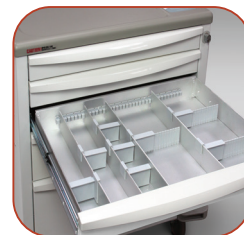
Glove Dispenser



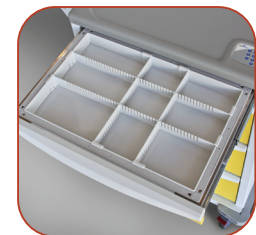
Cart I.D. Labels



Bridge Tilt Bins



Drawer Flex Divider System



ISO Trays (dividers sold separately)



# Additional Information

Contact Capsa Healthcare for more information about our wide selection of Avalo and I-Series Medical Carts that promote orderly storage and organization where it matters most. Adaptable to fit any application, Capsa's procedural and supply solutions are built to meet the unique needs of your facility.



## Website

Visit the Capsa website to learn more about Capsa's wide selection of procedural and supply solutions. The website provides in-depth information about product features, options and specifications that will give you the insight you need to find the right solution for your facility.

[www.CapsaHealthcare.com](http://www.CapsaHealthcare.com)



## Email

To request more information about Capsa products or to learn more about regional representation or distribution partners in your area, simply send us an email:

[Info@CapsaHealthcare.com](mailto:Info@CapsaHealthcare.com)



## Phone

If you have specific questions and wish to speak with someone directly, contact Capsa Healthcare and ask for Customer Service.

[800.437.6633](tel:800.437.6633)

Look for us on:



Certified ISO  
27001:2013



Certified ISO  
9001:2015



[CapsaHealthcare.com](http://CapsaHealthcare.com) | 800.437.6633

4253 NE 189th Avenue  
Portland, OR 97230