

NEW

A large, white, stylized graphic of a square frame with a thick border. The word "ALUNA" is written in a bold, white, sans-serif font across the middle of the frame. The word "BIFOLD" is written in a thinner, white, sans-serif font to the right of the frame.

ALUNA BIFOLD

Super slim aluminium bifolding doors from  **ALUNET**
SYSTEMS

1.1

W/M2K
TRIPLE
GLAZED

1.4

W/M2K
DOUBLE
GLAZED

107MM

MARKET
LEADING
SIGHTLINES

PAS24

COMPLIANT
2022

ENERGY
RATED

B



The ALUNA Bifold

The ALUNA bifold system offers a versatile, slimline system for single doors, French doors and bifolding doors and windows.

As an enhancement on the known and loved BF73 bifold system, the super slim profile sections of the ALUNA bifold system minimise the visible framework and maximise the glass area, with market-leading sightlines of just 107mm from frame to sash.

Achieving DER energy rating of B and a new PAS24:2022 certification, the bifolds are designed to the most up to date standards to be the best the market has to offer.

The ALUNA Bifold is part of a new collection of products brought to you by Alunet Systems, bringing their expertise and knowledge into a range of products, unbeaten on quality.

- ❑ Super slim sash
- ❑ Marketing-leading sightlines of just 107mm
- ❑ NEW sash extension
- ❑ NEW Optional clip in bead
- ❑ NEW Integrated Cill
- ❑ U-values as low as 1.1 triple glazed & 1.4 double glazed
- ❑ Energy Rated B (DER)
- ❑ PAS24: 2022 compliant



Sleek

Strong

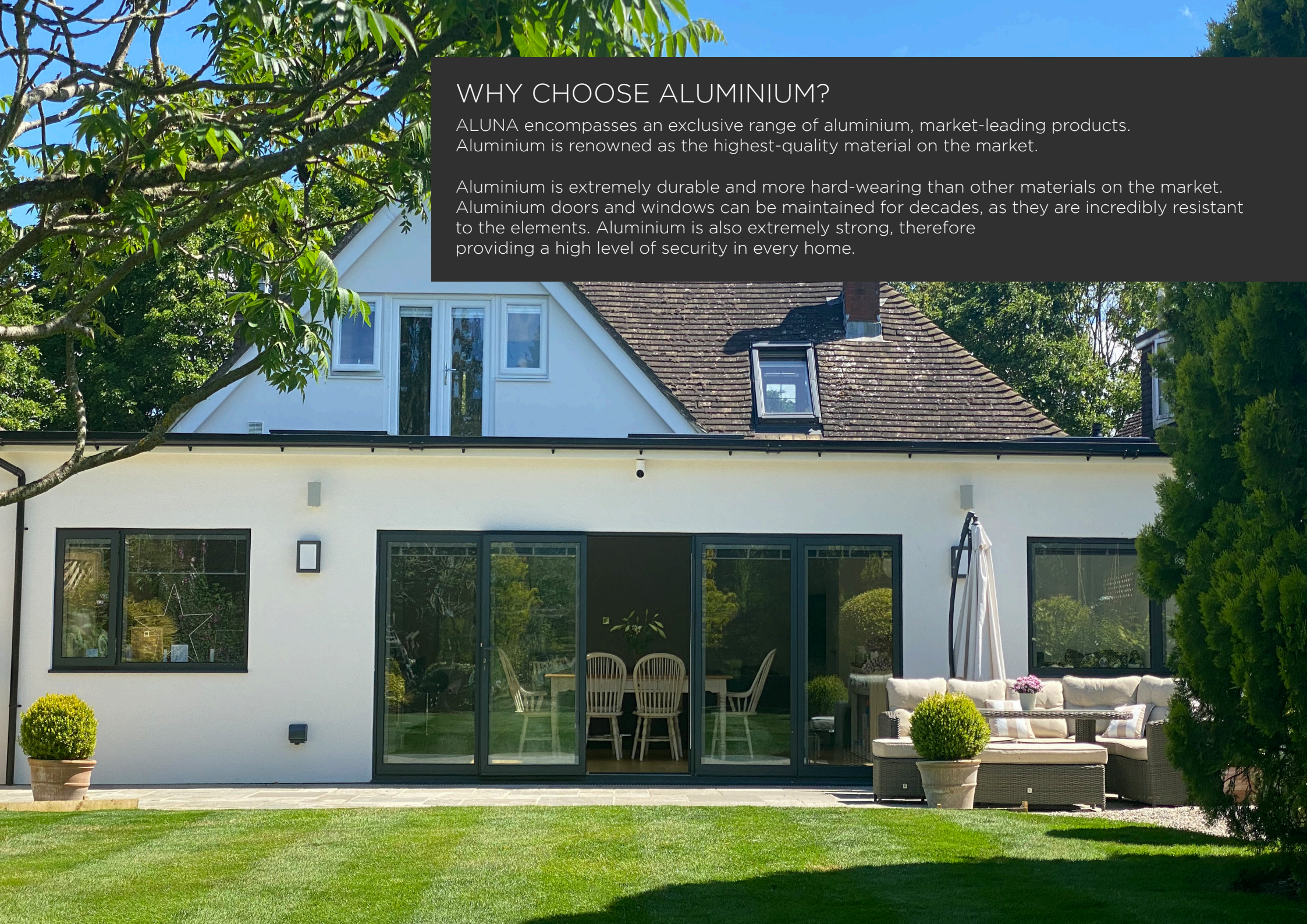
Secure

Bringing aluminium bifolding doors designed to a high specification to be thermally efficient, strong, safe and secure while looking great.

WHY CHOOSE ALUMINIUM?

ALUNA encompasses an exclusive range of aluminium, market-leading products. Aluminium is renowned as the highest-quality material on the market.

Aluminium is extremely durable and more hard-wearing than other materials on the market. Aluminium doors and windows can be maintained for decades, as they are incredibly resistant to the elements. Aluminium is also extremely strong, therefore providing a high level of security in every home.





ENERGY
RATED

B

PAS24
COMPLIANT
2022

107MM
MARKET
LEADING
SIGHTLINES

1.4
W/M2K
DOUBLE
GLAZED

1.1
W/M2K
TRIPLE
GLAZED

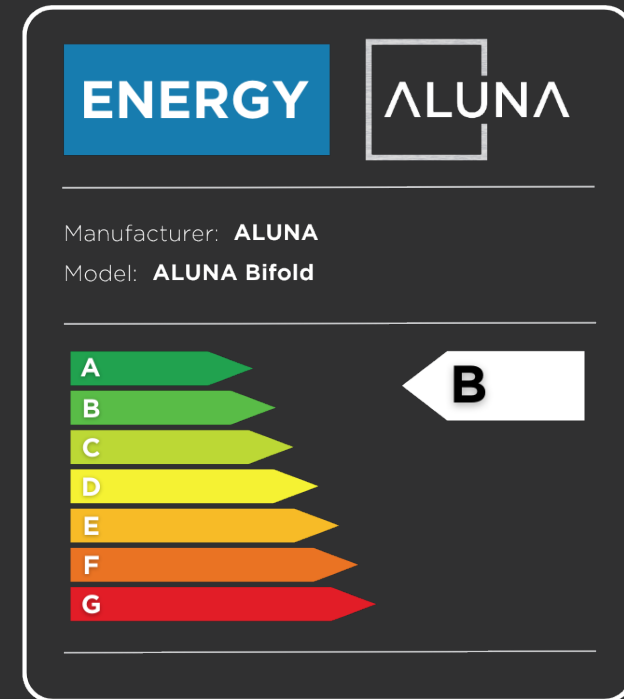
New & Improved System

The NEW ALUNA Bifold system boasts many new and improved features of the known and loved BF73 system.

NEW slimmer profile sections of the ALUNA Bifold boasts an even more streamlined appearance and achieves sightlines of just 107mm. Offering one of the largest sash sizes available, up to 1200mm wide and 3000mm high per pane. The ALUNA Bifold can also be manufactured with up to 7 leaves each way (14 in total).

Enjoy silky smooth opening and closing operation due to our engineering-grade hardware. Ideal to open up space to the outdoors and create a visually stunning addition to any property. The doors also provide improved thermal performance with U-values as low as 1.1 U/m²K, and high security compliant to PAS24:2022 standards.

The new sash extension is another improved feature to the ALUNA Bifold, offering ease of fabrication and speed. Less gaskets are also now used, enhancing the overall operation and user experience of the doors.



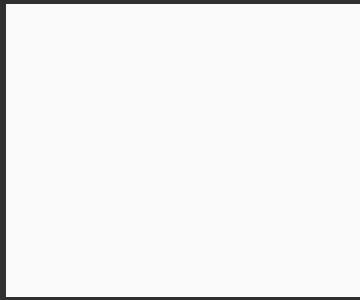
NEW CLIP IN BEAD

Our NEW clip in bead system is a great addition to the ALUNA Bifolds. Designed to be incredibly easy to install, the bead simply clicks into place, removing the need to wedge gask it and achieves even slimmer sightlines. The gasket also has a plastic back to it to prevent stretching, bring you an incredibly durable and easy to use bead.

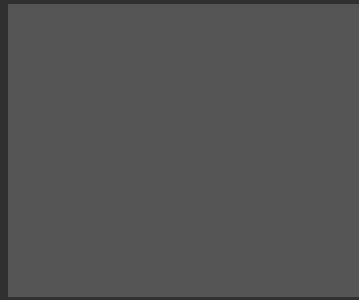
Colours

Our ALUNA Bifold products are available in any RAL colour upon request.

The standard colours that we have in stock are Grey 7016 (Matte), Black (Matte), White 9016 (Gloss), Grey 7016 (Matte) on White 9016 (Gloss) and Black 9005 (Matte) on White 9016 (Gloss).



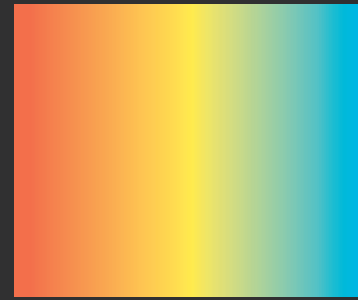
White
RAL9016



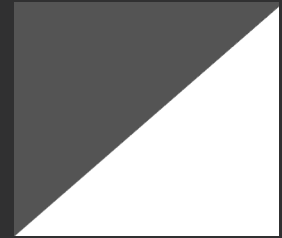
Anthracite Grey
RAL7016



Black
RAL9005



Bespoke RAL
Colour



Grey Out/
White In



Black Out/
White In

ALULOCK

LOCK, KEEP AND HANDLE

The ultimate security kit for ALUNA Bifolds.

ALULOCK security kit combines a euro profile cylinder as standard, with the option to upgrade to the Ultion 3-star barrel, with the Brisant Sweet Handle and an exclusively designed Duplex Double-Hook Lock, providing a solid 6-point locking system for additional security.

THE SWEET HANDLES

Safe, Stylish & Durable

The Ultion Sweet Handles are a popular upgrade due to their impressive durability as part of the ultimate security kit. These stunning handles are highly secure, able to stop gripping tools designed to snap off handles during break ins.

Carrying multiple coatings of brass and nickel to ensure robust performance, with a 10-year anti-corrosion guarantee for peace of mind.



Available in a range of colours including: black, white, grey, chrome, stainless steel, gold and rose gold.

STAINLESS STEEL HANDLE

316 Marine Grade Stainless Steel

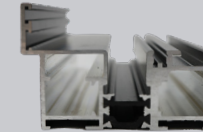
The stainless steel handle upgrade has been designed by experts for enhanced performance and durability creating one of the highest-quality door handles on the market.



The suited handle is made from 316 marine grade stainless steel, compared to the industry-standard of 304, giving it long-term resistance to corrosion.

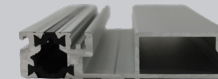
Thresholds

The ALUNA Bifold, French Door & Single Door can all be designed with the following threshold options:



Standard threshold

A 55mm threshold that acts as a full weather break.



Low threshold

A 20mm threshold for a seamless look.



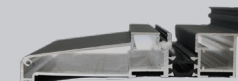
Low threshold with rebate

A 20mm rebate attached to a low threshold.



Low threshold with ramps

Ideal for homes that need additional accessibility.



NEW Integrated Cill

Provides full weather rating and maximises the overall sash height.

Universal aluminium cills

Compatible with most systems, directing water way from brickwork (available as 90mm, 150mm, 190mm & 230mm).

One system that does it all

Whether it's a single door, French door or bifolding door or window, they can all be fabricated from the same ALUNA Bifold system.

It's so versatile that it can cater for projects that call for shaped frames, fixed frames, sidelights, astragal bars, blinds in glass and can even be used as an entrance door with optional panel inserts.

All ALUNA Bifold products can be finished in several glazing options to suit any property including:

- Double & Triple Glazing
- Integral Blinds
- Heritage Look Astragal Bars & Transoms
- Solid Panel Inserts

All sashes with the bifolding system are available in 2 profile designs: Square and Textured Square*. Choose square for a classic look or textured square for a more contemporary alternative.

**textured square only available in 7016 anthracite grey*

Also new to the bifold system is our door restrictor, preventing the door from opening over 90 degrees. Easy to install, the arm can also be easily detached for full opening of the door.

Easy Installation

The ALUNA bifold system has been designed to be quick and easy to install. The system offers an optional adjustable jamb feature for maximum adjustability of +/- 4mm either side during installation and is easily adjustable with an allen key.

Floating Corner Post

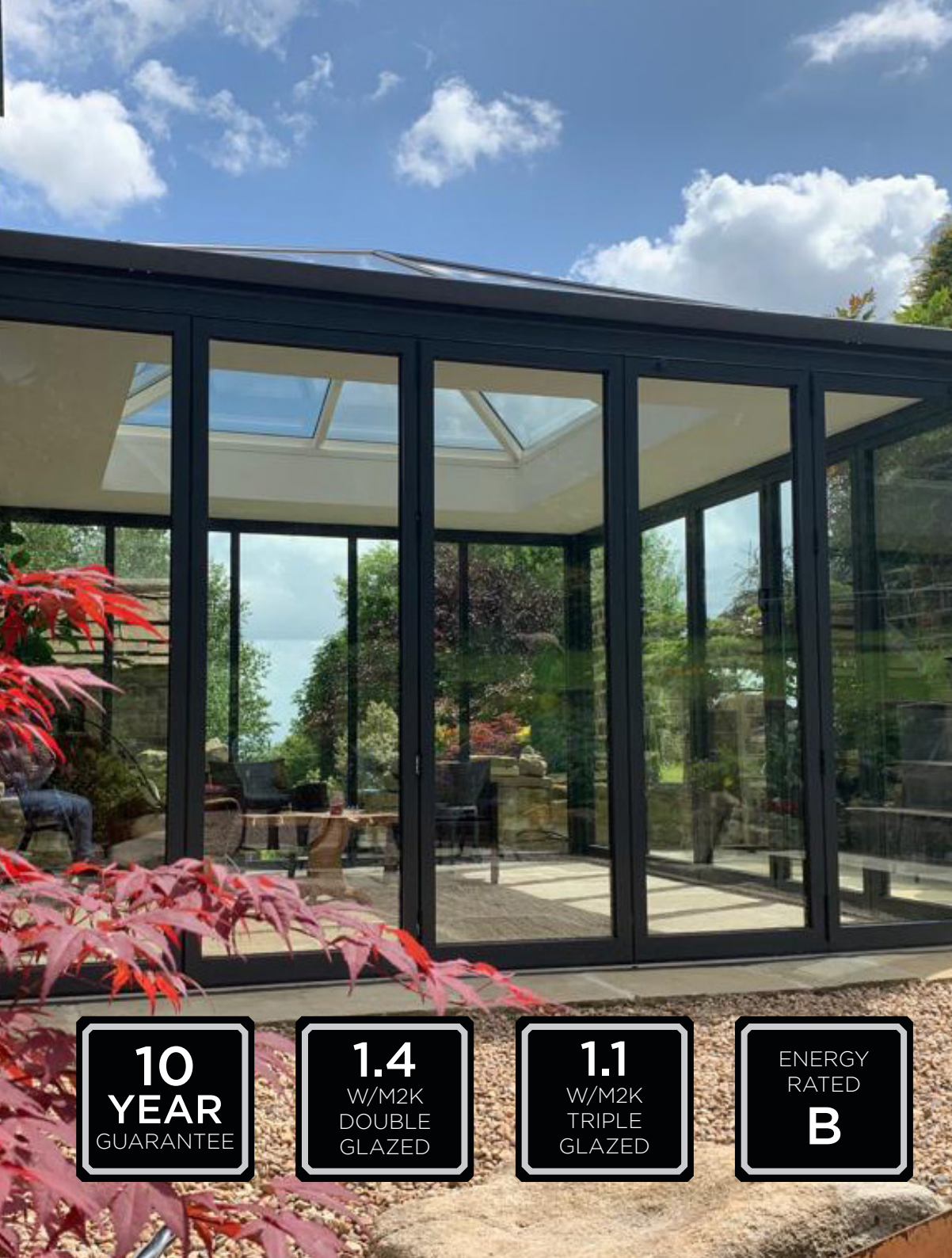
The floating corner post option enables right-angled BF73 bifolding doors, including the return, to open out fully, with the option of a fixed corner, for the ultimate wow factor! (Structural support needs to be in place.)

Weather Resistance

Excellent weather sealing is achieved using specially designed perimeter seals, with the option of weather piles for lower thresholds. Weather-tightness tested to British standards.

Low Maintenance

Our low-maintenance aluminium doors are strong, durable and highly corrosion-resistant. Unlike timber, they don't need painting or staining to keep them weather-proof, and they won't rust or corrode. They will also never rot, peel or flake.



TECHNICAL DETAILS AT A GLANCE

- ❑ Market-leading maximum sash sizes up to 1200mm x 3000mm.
- ❑ Maximum vision – minimal sight lines of only 107mm or 120mm.
- ❑ Maximum security- PAS24: 2022 certification.
- ❑ U Values as low as 1.1 with triple glazing and 1.4 with double glazing (U W/m2k).
- ❑ Maximum weather proofing – tested to BS6375 Part 1 : 2009.
- ❑ Single or dual colour. Factory powder coated to marine quality as per approved Qualicoat regulations.
- ❑ 120kg per door leaf providing for the openings.
- ❑ Engineering grade running rollers for a smooth and silky opening and closing operation.
- ❑ Trickle vents can be added.

10
YEAR
GUARANTEE

1.4
W/M2K
DOUBLE
GLAZED

1.1
W/M2K
TRIPLE
GLAZED

ENERGY
RATED
B

ALUNA BIFOLD

Brought to you by



T: 01924 350 110

info@alunetsystems.co.uk

www.alunetsystems.co.uk



Alunet Systems
Low Mill Lane, Havelock Street
Ravensthorpe Industrial Estate
Ravensthorpe
Dewsbury
WF13 3LN