

*Let's
Build A
Laser Kit*



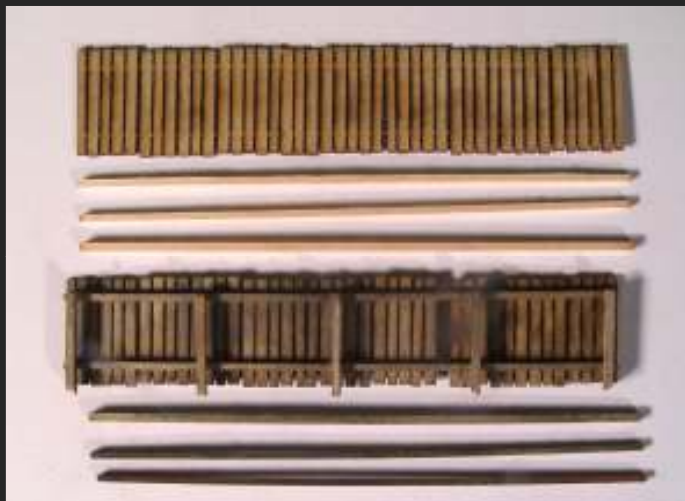
Working With Laser Kits:



- *Accurately fitting and scaled parts*
- *Simple Instructions*
- *Wood Construction*
- *"Scratchbuilt" look*
- *Easy Weathering*

- *Slow Drying Glue*
- *Must Paint Parts*

A great introduction to laser kits.



Signs



A large kit just has more pieces.



Pre-finished Walls

Bar Mills
OVERNIGHTERS



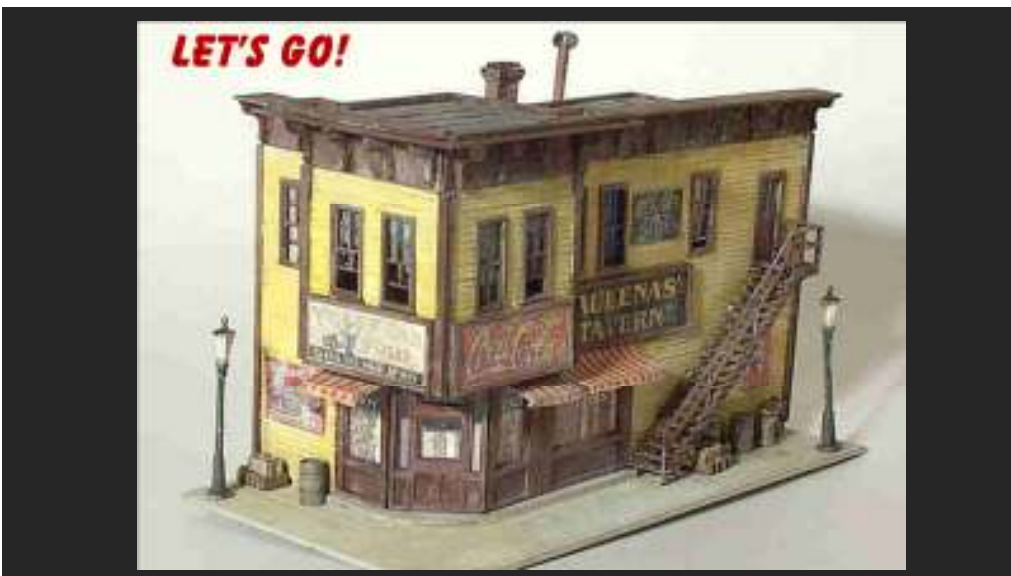
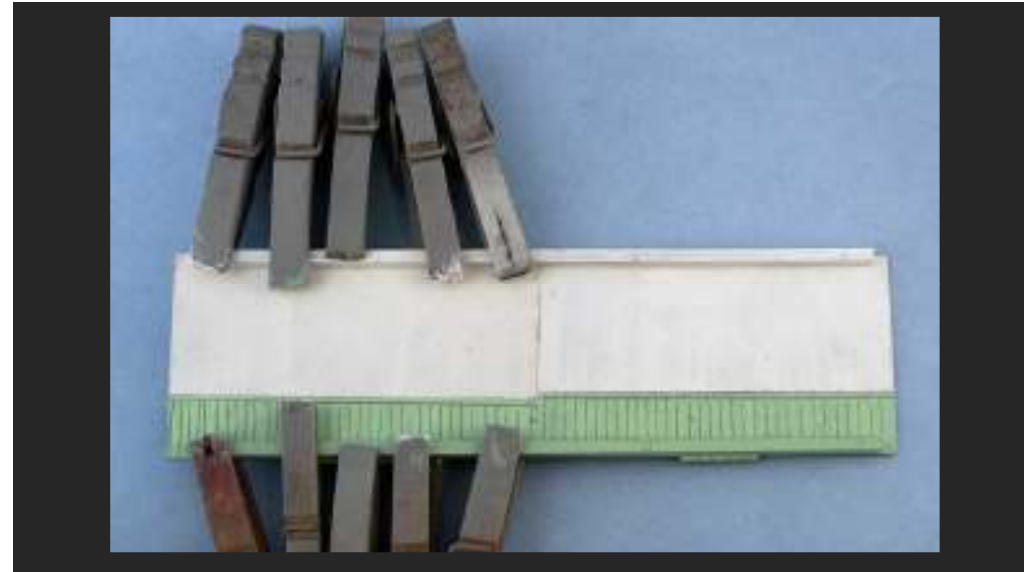
TOOLS



*Handy for
traveling*

GLUE

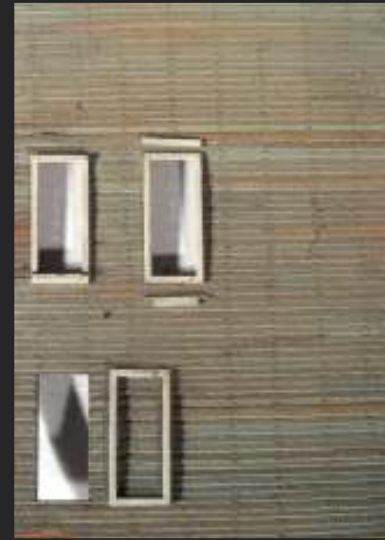




Drybrush



Windows



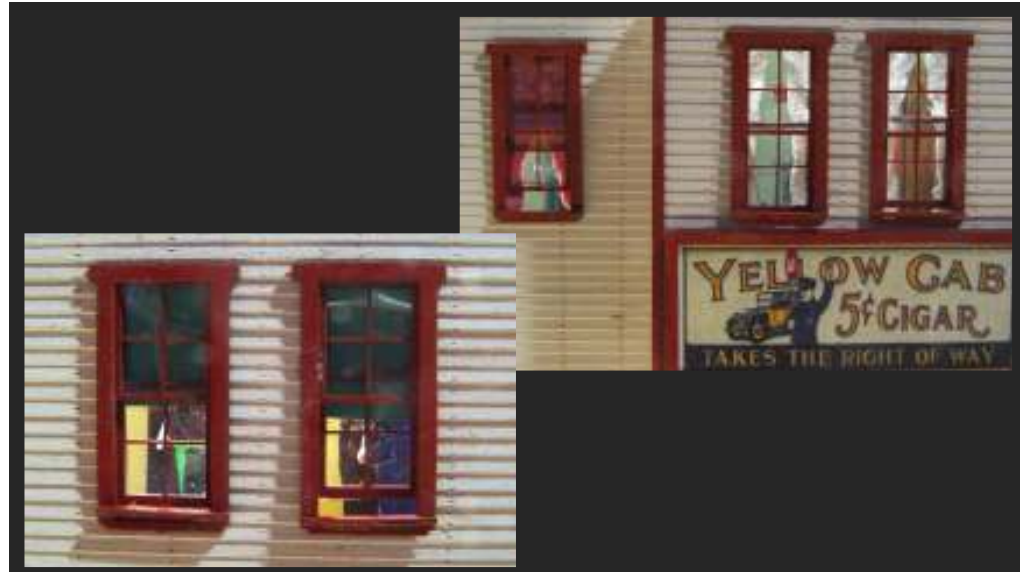
Freight Doors



Brace walls



Window Treatments



Add Corner Posts



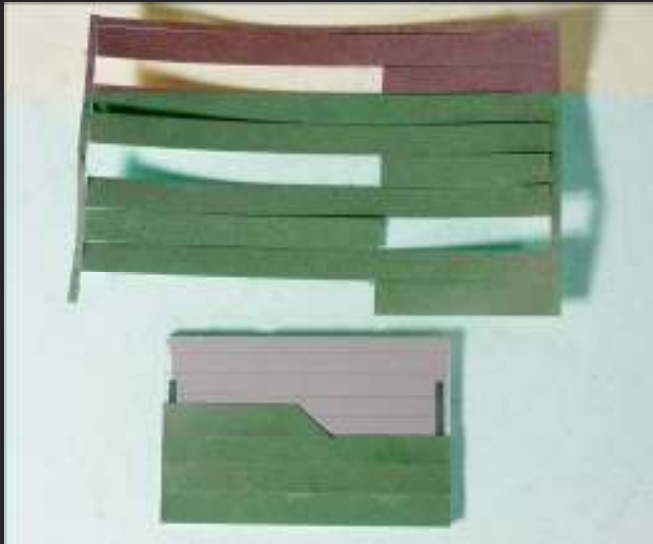


ROOFING

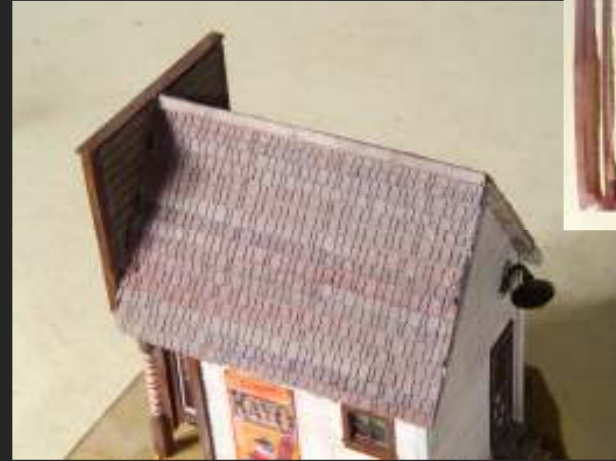


Tarpaper Roofs

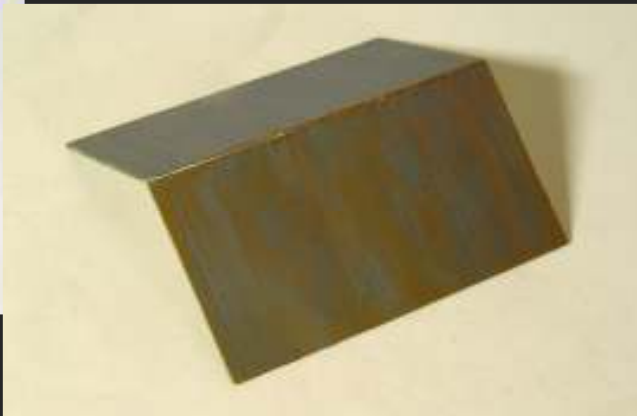




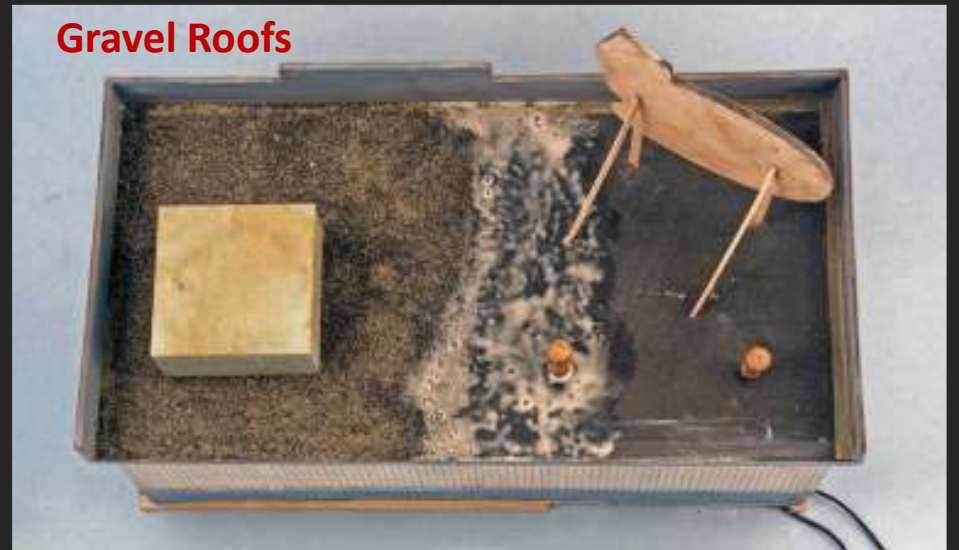
Shingle Roofs



Metal Roofs



Gravel Roofs





Clean & prime castings- paint in place.

Kitbashing



The 1-Kit





Jarisch Paper Box



Luna Park



Presentation by Michael Tylick, MMR

A Telegraph Hill Production
www.raildesignservices.com