

# The Paradise Collection CO-RESIDENCIAL

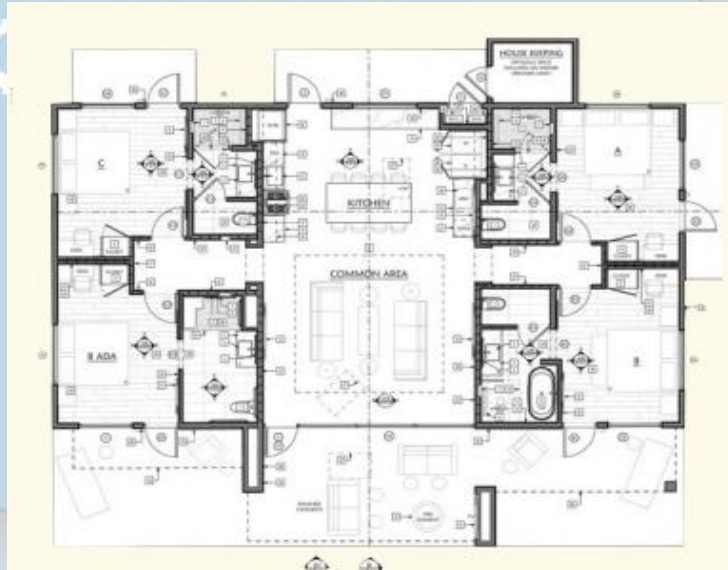
4BR/4BA

50 M2/540 FT2

*EL CIELO ACTIVE ADULT  
COMMUNITY*

**Price: 75,000.00 USD**

- Steel Stud & Drywall Walls
- Durarock exterior
- Insulation
- Insulated Truss Roofs
- Rain gutters
- Paradise Patio (4-in-1 Use)
- Patio Mist system
- Patio Bar
- Built-in BBQ
- Professionally Designed Carpentry
- Brick Dome Ceiling
- Decorative tile bathrooms
- All Electric
- Central HVAC/Heat or Mini Splits
- Jacuzzi
- On-demand Water heater
- Garage (2-car)
- Smart Mirrors
- Surround sound
- Alexa
- Smart TV
- Fire TV
- Video Doorbell
- Landscaping
- Two-person Sauna or Jacuzzi
- DSL Internet
- Reverse Osmosis Water Purifier



The Co-Residences are comprised of two suites and a common area:

**Suite (50M2)\***

- Bedroom
- Sitting/TV Room
- Bathroom
- Private Entrance

**Common Area (28M2)\***

- Kitchen
- Dining Room
- Living Room
- Patio

*\* Living, A/C Area*

**El Cielo Community Sales Office**  
**638-156-3533, [Paradisesandsmx@aol.com](mailto:Paradisesandsmx@aol.com)**  
**[www.elcielo.com](http://www.elcielo.com)**





## **EL CIELO COMMUNITY**

### **INTRODUCTION**

El Cielo Community is a 194-lot subdivision with all underground utilities and an onsite medical clinic. The development was started in 2008 at the beginning of the economic recession that stalled most development in the area. During the recession years and into the COVID pandemic, the developer continued to improve the subdivision with curbs and landscaping.

### **EL CIELO COMMUNITY**

El Cielo Community is being transformed into an active adult community focusing on Community, Lifestyle and Wellness. Active adult living features are affordable, comfortable homes; walk-to commercial, enjoyable amenities and green, open spaces.

### **AMENITIES**

Amenities to be added in the subdivision include swimming pools, a clubhouse/bar, walking trails and BBQ areas.

### **ROCKY POINT MEDICAL CENTER**

Rocky Medical Center provide 24/7 medical care and dental care, but also luxury spa services such as massage and esthetic skin care.

### **LOCATION**

El Cielo Community is located on the highway from the US-Mexico border approximately 2 miles before the entrance to Rocky Point. In real estate, the expression is location, location, location, the reality is experience, experience, experience! Lifestyle is more than location, it is how enjoyable the location is and being a part of a community that promotes physical and mental wellness



**El Cielo Community Sales Office**  
**638-156-3533, [Paradisesandsmx@aol.com](mailto:Paradisesandsmx@aol.com)**  
**[www.elcielo.com](http://www.elcielo.com)**