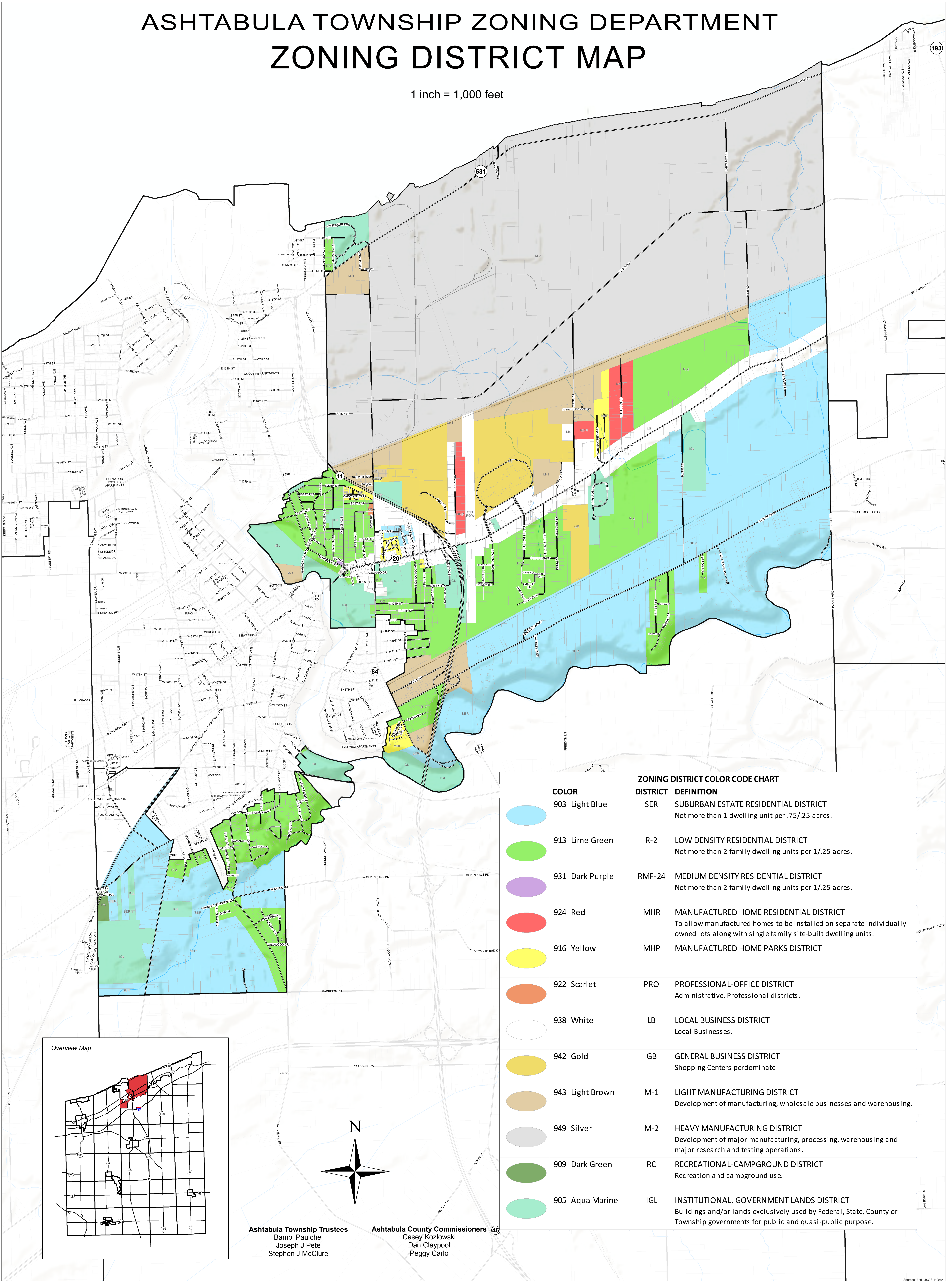
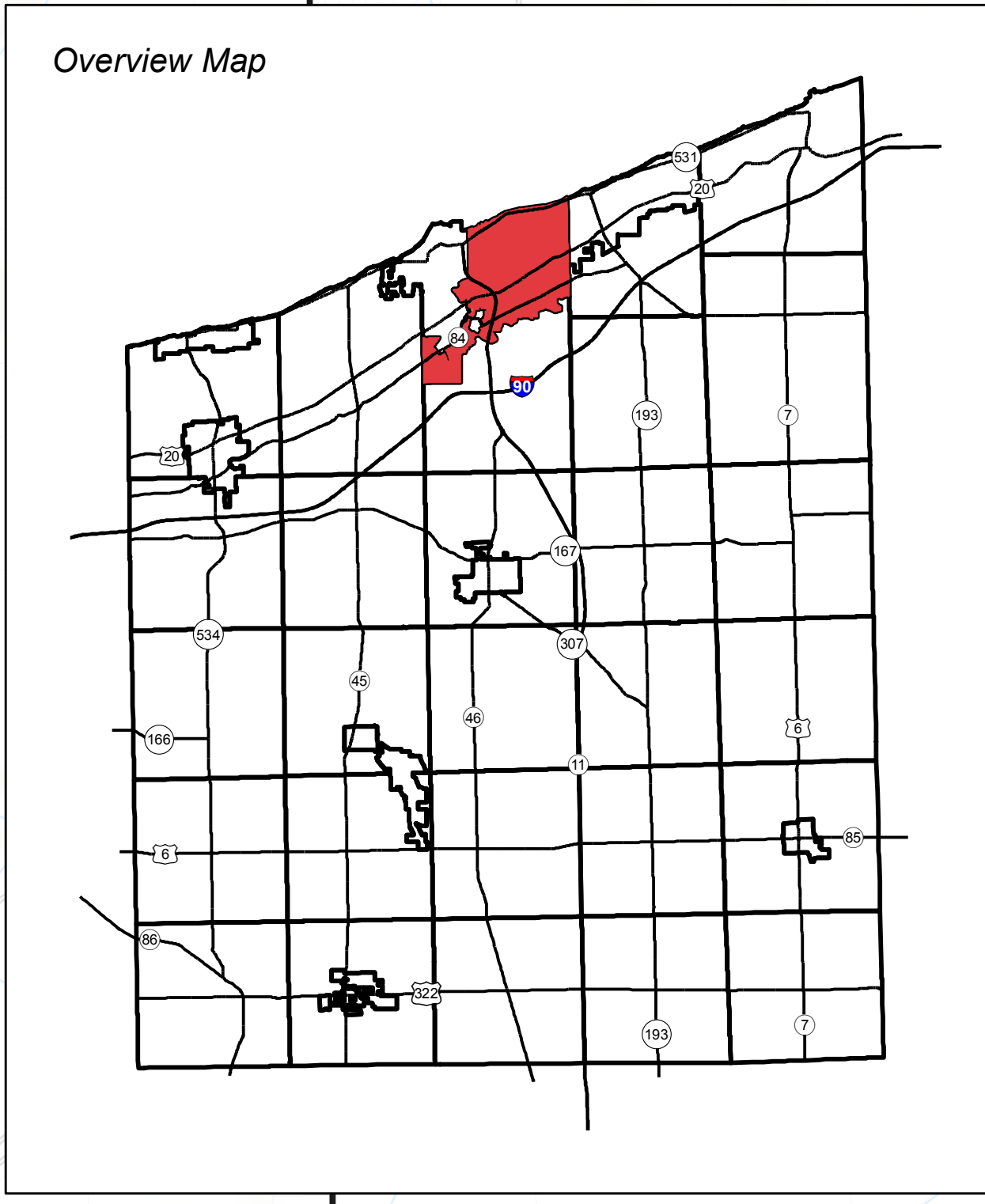


ASHTABULA TOWNSHIP ZONING DEPARTMENT ZONING DISTRICT MAP

1 inch = 1,000 feet



ZONING DISTRICT COLOR CODE CHART			
COLOR	DISTRICT	DEFINITION	
	903 Light Blue	SER	SUBURBAN ESTATE RESIDENTIAL DISTRICT Not more than 1 dwelling unit per .75/.25 acres.
	913 Lime Green	R-2	LOW DENSITY RESIDENTIAL DISTRICT Not more than 2 family dwelling units per 1/.25 acres.
	931 Dark Purple	RMF-24	MEDIUM DENSITY RESIDENTIAL DISTRICT Not more than 2 family dwelling units per 1/.25 acres.
	924 Red	MHR	MANUFACTURED HOME RESIDENTIAL DISTRICT To allow manufactured homes to be installed on separate individually owned lots along with single family site-built dwelling units.
	916 Yellow	MHP	MANUFACTURED HOME PARKS DISTRICT
	922 Scarlet	PRO	PROFESSIONAL-OFFICE DISTRICT Administrative, Professional districts.
	938 White	LB	LOCAL BUSINESS DISTRICT Local Businesses.
	942 Gold	GB	GENERAL BUSINESS DISTRICT Shopping Centers predominate
	943 Light Brown	M-1	LIGHT MANUFACTURING DISTRICT Development of manufacturing, wholesale businesses and warehousing.
	949 Silver	M-2	HEAVY MANUFACTURING DISTRICT Development of major manufacturing, processing, warehousing and major research and testing operations.
	909 Dark Green	RC	RECREATIONAL-CAMPGROUND DISTRICT Recreation and campground use.
	905 Aqua Marine	IGL	INSTITUTIONAL, GOVERNMENT LANDS DISTRICT Buildings and/or lands exclusively used by Federal, State, County or Township governments for public and quasi-public purpose.



Ashtabula Township Trustees
Bambi Paulchel
Joseph J Pete
Stephen J McClure

Ashtabula County Commissioners 46
Casey Kozlowski
Dan Claypool
Peggy Carlo

Source: Esri, USGS, NOAA