

WATCH

STARS FROM THE POPULAR NEW PARAMOUNT+ PREQUEL SERIES
“STAR TREK: STRANGE NEW WORLDS” AND “1883”
ARE FEATURED ON THE COVERS OF
WATCH MAGAZINE’S MAY/JUNE DIGITAL ISSUE, AVAILABLE NOW!



The *Watch* Cover Stars Are Anson Mount, Rebecca Romijn and Ethan Peck from “Star Trek: Strange New Worlds,” the New Series Set Prior to Captain Kirk’s Adventures on the U.S.S. Enterprise, as well as Isabel May from “1883,” the Prequel to “Yellowstone”

[Click HERE for *Watch* Digital Cover Issue of “Star Trek: Strange New Worlds” or Scan Below QR Code](#)



[Click HERE for *Watch* Digital Cover Issue of “1883” or Scan Below QR Code](#)

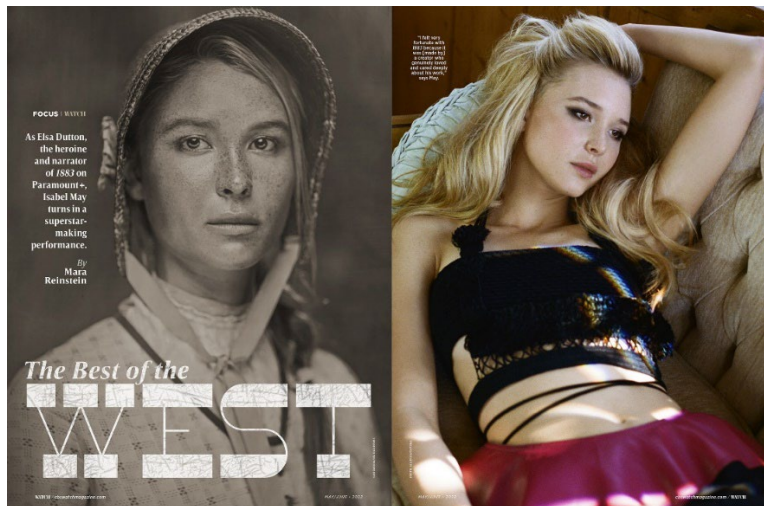
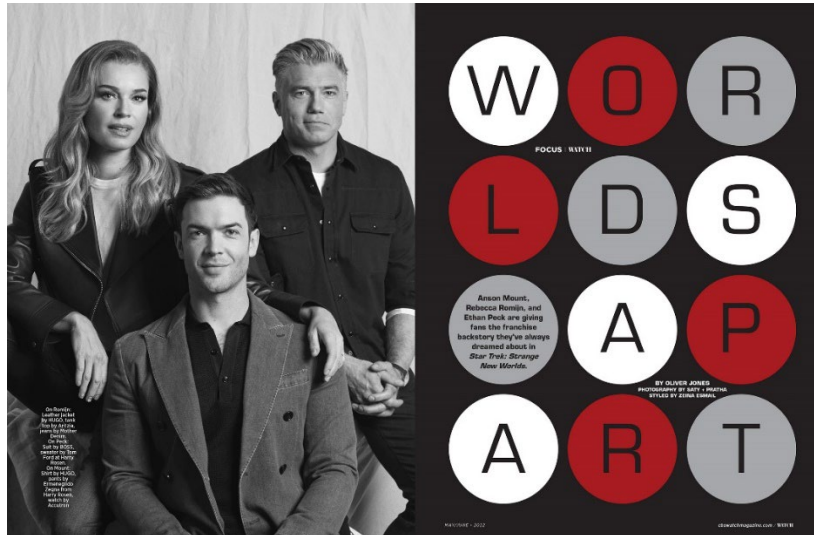


NEW YORK – May 26, 2022 – Paramount+ stars Anson Mount, Rebecca Romijn and Ethan Peck of STAR TREK: STRANGE NEW WORLDS and Isabel May of 1883 are featured on the covers of *Watch* magazine’s May/June digital issue, available now!

(More)

Watch!...2

Additionally, within this edition are features with EVIL star Katja Herbers, THE BOLD AND THE BEAUTIFUL's Katherine Kelly Lang, and THE YOUNG AND THE RESTLESS star Sean Dominic; intel on the hottest summer fashion trends; a guide to the best bingeable shows for the season and more.



(More)



SHINE | IRRESISTIBLE

Soap Dish

Katherine Kelly Lang, *The Bold and the Beautiful*'s Brooke since 1987, shares top-secret tips on how to avoid "cry-face."

FAVORITE FASHION DESTINATION: I love to travel to Italy to see the new fashions every year.

BEST STYLE INVESTMENT: Italian brand Benheart USA. My partner Dom Zolda and I opened the only U.S. location in Beverly Hills in 2019. The founder had a heart transplant 10 years ago and named his brand for the moment everything changed in his life: Ben Heart.

PLAYLIST: Right now I'm revisiting all the classic rock: the Rolling Stones, Fleetwood Mac, Pearl Jam.

SHOE OR BAG LOVER? Both, but I have more shoes than bags. Mostly Gucci and Benheart.

RULES ON MUST-HAVE STATEMENT ACCESSORIES: I go by how I feel. Sometimes I like simplicity; sometimes I layer it up!

STYLE SIGNATURE: Casual—jeans and T-shirts, free-flowing kaftans, or my workout clothes! Of course, I dress up when it's called for.

FAVORITE DESIGNER(S): Dolce & Gabbana; their designs are stunning and sexy. Gucci and Benheart, especially fitted leather jackets.

BEAUTY PRODUCT: Skinbetter Science creams. Intensive AlphaRet

Overnight Cream in 50 is my go-to. If I don't have that, I use Lancôme Absolue revitalizing and brightening soft cream.

EVERYDAY BAG: The Benheart "Given" bag in the marrone color. It's broken in so it has a vintage look and can be worn as a cross-body.

HAIR MVP: ShiKai hair conditioner—it's gentle on my hair and leaves it shiny.

SKIN CARE REGIMEN: I put on my creams in the morning and my creams at night. Both on a fresh, clean face. A once-a-month facial and micro-needling is a must.

TIP TO AVOID CRY-FACE: I have the best makeup team in the business on standby.

MOST FREQUENTED HOTSPOT: The barn with my horses.

SECRET VACATION SPOT: The big island of Hawaii.

TOP INDULGENCE: My children.

STYLE RULE: Be true to you. Wear what makes you feel comfortable and pretty. Just because something is in style doesn't mean it's for you.

THE BOLD AND THE BEAUTIFUL

also weekdays at 1:30 p.m. ET/12:30 p.m. PT on CBS and streams on Paramount+

WATCH / cbswatchmagazine.com

MAY/JUNE • 2022

HAIR: JESSICA LUTTREY

Watch!...4

About *Watch*

The official magazine of CBS since 2006, *Watch* offers a rare, glamorous window into the lives of television's biggest stars. With distinctive photography by top tier talents and first-class stories curated by industry veterans, *Watch* magazine has steadily become one of the most elegant, sophisticated publications today. This intriguing mix of entertainment, celebrity, culture, fashion and beauty features talent from CBS, Paramount+, SHOWTIME, The CW, CBS Media Ventures and CBS Studios.

The magazine's digital properties present readers with richer pathways to continue the journey beyond the velvet rope. Timely behind-the-scenes videos and photo galleries bring the reader closer to their favorite characters and their favorite shows.

Website: www.cbswatchmagazine.com

Facebook: facebook.com/CBSWatch/

Twitter: <https://twitter.com/CBSWatch>

Instagram: <https://www.instagram.com/CBSWatch>

Watch Press Contact:

Barbara Abseck

beabseck@cbs.com