

FEATURES

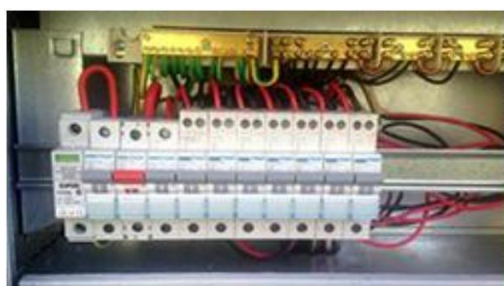
Full Data Analytics for Electrical Energy Consumption

- Supports IoT Centric Cloud Architecture with Web Graphical User Interface and Mobile Application
- For both Single and Three Phase Installations
- Wide Voltage Input - 100-440VAC Three Phase
- UL 94-V0 approved Polycarbonate IP2X DIN Enclosure
- Standard DIN package
- Six (6) Current Channel Inputs and Three (3) Voltage Channel Inputs
- Supports Current Transformers with 60A, 120A, 200A, 400A, 600A with standard protected 333mV output
- <1% (Voltage) and 0.85% +/- 0.15% of Full Scale CT Rating (Current and Watts) Power Quality Data Accuracy
- Data Communication Variants – WiFi and Cellular (Cat-1 and Cat-M1).
- Remote Firmware Update
- Measurement Category CAT III
- Product Life of 10 years
- Safety standard IEC 61010-1:2010 + AMD1:2016



DESCRIPTION

The Edge Energy Monitor real time energy monitor device is a DIN mounted unit which is installed into the switchboard of a Residential or SME Commercial facility. The product will transmit full Power Quality and Energy data to a Cloud Database which is then used to provide usage analytics and energy insights to Customers via a mobile app experience. Any additional enhancement on its software can be updated remotely.



EnergyMonitor Electrical Energy Monitoring and Control

Full Energy Cloud Data GUI also to Smart Phones

Models: EE-404-Series



Electrical Specifications	
Available Configurations	<i>Single Phase or Three Phase (Wye and Delta)</i>
Electrical Frequency	<i>50/60Hz</i>
Rated Voltage	<i>100-275 VAC Line – Neutral 1-Ph 173-440 VAC Line-Line, 3-Ph</i>
Rated Current	<i>60A, 120A, 200A 400A, 600A split core current transformers.</i>
Lightning Strike	<i>IEC61000-4-5 Class 1 500V</i>
Power Quality Data Accuracy	<i>Voltage < 1% Current/Watts 0.85% +/- 0.15% of Full Scale CT Rating</i>
Power Factor Accuracy	<i>± 1 degree</i>
Power Quality Measurements	<i>vTHD, iTHD, individual harmonics up to 15th order</i>
Measurement Interval	<i>1 – 150 second (configurable) @ 1sec data point Default 30 seconds.</i>
Energy Transmission	<i>5 second – 15-minute intervals (configurable) Default 60 seconds</i>
Communication Outage data logging	<i>10 days of 15-minute interval data stored if offline and uploaded to server once reconnected.</i>
Current Sense Channels	<i>1 – 6 channels; Single Phase and Three Phase.</i>
Operating Temperature Range	<i>-10 to 60 °C Ambient</i>
Data and Event Logging	
Power Quality Data	<i>Critical Parameters: Voltage per line, Current per channel, Power per channel, Power Factor per channel, THD per voltage and current channel Non-Critical Parameters (per minute instantaneous): Frequency per line, Harmonics per current & voltage channels (odd harmonics from 3rd to 15th)</i>
Event Logging	<i>Over Voltage: >253V Under Voltage: <216V Over Frequency: >52 Hz Under Frequency: <48 Hz Over Voltage THD: >5%</i>
Connectivity	
Communications Options	<i>WiFi and Cellular (CAT-1 and CAT-M1)</i>
Communications Architecture	<i>Periodic reporting to a central IoT Cloud server</i>
Systems Logs	<i>Fully configurable measurement interval with 10 days Communication Outage Data Retention</i>

EnergyMonitor Electrical Energy Monitoring and Control

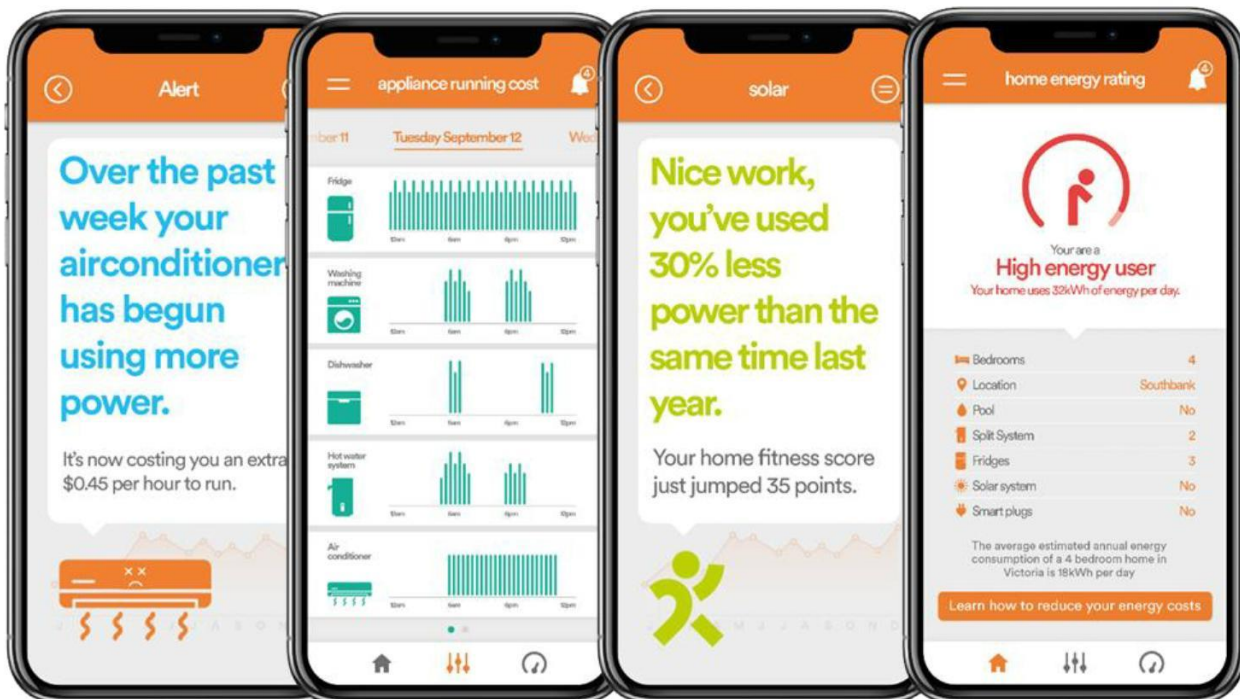
Full Energy Cloud Data GUI also to Smart Phones

Models: EE-404-Series



Mechanical and Environmental	
Dimensions	Two-pole, 35mm DIN package
Weight	100g
IP Rating	IP2X
Operating Temperature and Humidity	-10°C to 60°C, 0-95% RH non-condensing
Storage Temperature	-30°C to 80°C
Operating Altitude	1000m

GRAPHICAL USER INTERFACE



LED indicators for Cellular Variant

Device Status (4G Cat-1/LTE Cat-M1)					Power LED	Comms LED
					(Green)	(Amber)
Power to Hardware	Hardware Error	Modem Communication	Cellular Network Connection	Cloud Server Connection		
OFF	X	X	X	X	OFF	OFF
ON	CRITICAL ERROR*	X	X	X	OFF	OFF
ON	NONE	ERROR	X	X	ON	OFF
ON	NONE	CONNECTED	DISCONNECTED	X	ON	FAST BLINK (4Hz)
ON	NONE	CONNECTED	CONNECTED	DISCONNECTED	ON	PULSE (5 Sec)
ON	NONE	CONNECTED	CONNECTED	CONNECTED	ON	ON (SOLID)

LED indicators for WiFi Variant

Device Status (WIFI)					Power LED	Comms LED
					(Green)	(Amber)
Power to Hardware	Hardware Error	WiFi Chipset Communication	WiFi Network Connection	Cloud Server Connection		
OFF	X	X	X	X	OFF	OFF
ON	CRITICAL ERROR*	X	X	X	OFF	OFF
ON	NONE	ERROR	X	X	FAST BLINK (4Hz)	OFF
ON	NONE	CONNECTED	DISCONNECTED	X	ON	OFF
ON	NONE	CONNECTED	WPS Configuration	X	ON	SLOW BLINK (1Hz)
ON	NONE	CONNECTED	AP Configuration	X	ON	FAST BLINK (4Hz)
ON	NONE	CONNECTED	CONNECTED	DISCONNECTED	ON	PULSE (5 Sec)
ON	NONE	CONNECTED	CONNECTED	CONNECTED	ON	ON (SOLID)

ENERGY MONITOR PART NUMBERS – EE-404-XXX

Cellular

CAT-1: EE-404-001

CAT-M1: EE-404-009

WiFi

WiFi: EE-404-006

Contact

Magis Innovations Inc.

www.magisinnov.com

info@magisinnov.com