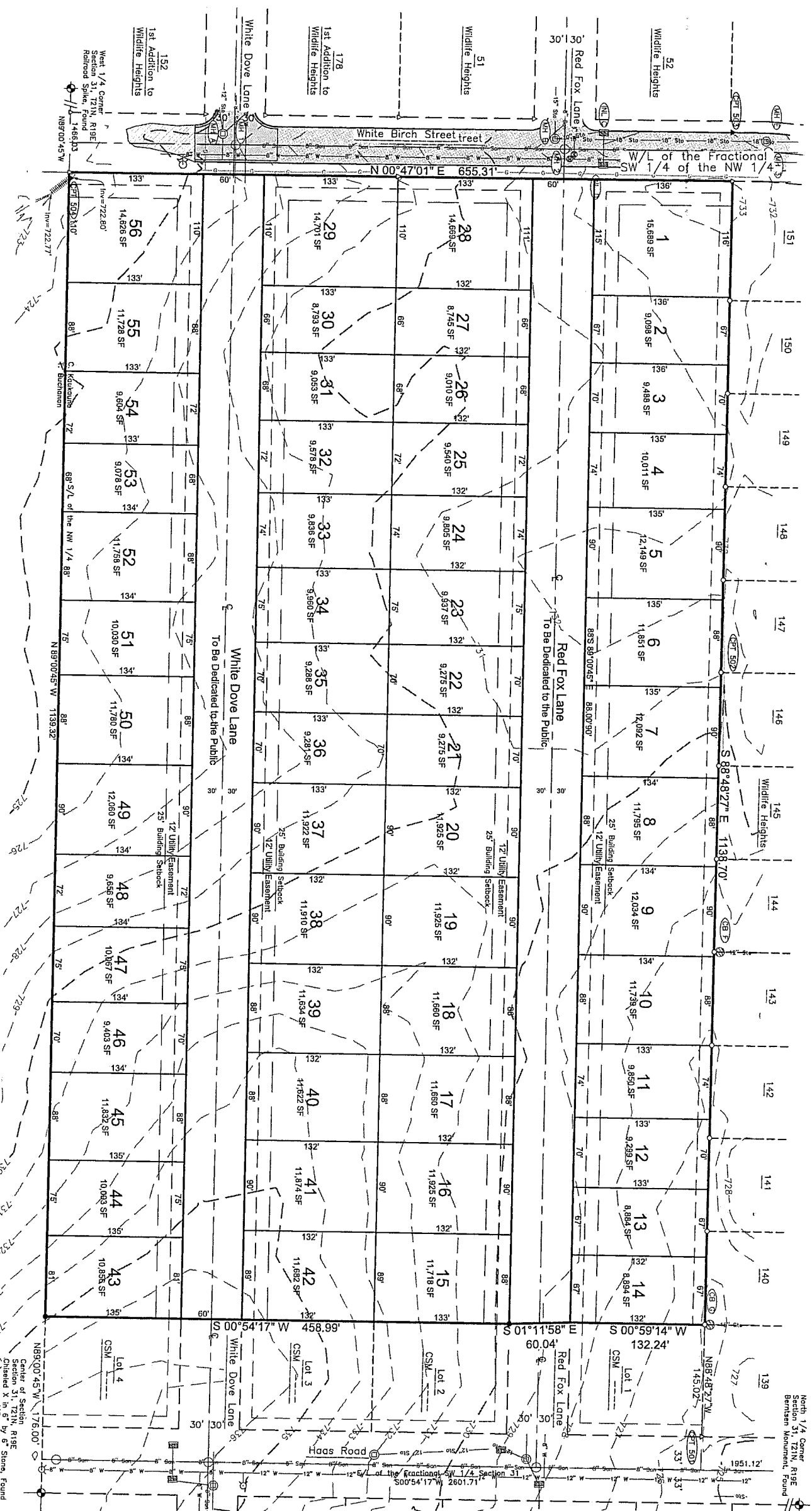


# Preliminary Plat of Blue Stem West

All of Lot 1 of Certified Survey Map \_\_\_\_\_ being located in part of the SE 1/4 of the NW 1/4 of Section 31, Township 21 North, Range 19 East, City of Kaukauna, Outagamie County, Wisconsin.

Preliminary Plat of



## LEGEND

- Sanitary Sewer (Pipe Size)
- Storm Sewer (Pipe Size)
- 12" Water Main
- 12" Gas Line
- Underpass Gas Line
- Curb
- Hydrant
- Water Valve
- Electric Meter
- Intermediate Contour - Elevation +729.9
- Electric Meter
- Past / Guard Post
- 12" Water Main
- 12" Gas Line
- Government Center
- Airport
- Concrete Pavement
- Gravel

**SUPPLEMENTARY DATA**

Total Area = 744,381 SF 17.0886 acres  
 RW Area = 136,728 SF 3.1390 acres  
 Net Area = 607,648 SF 13.9496 acres

Number of Lots = 56  
 Average lot size = 10,500 SF  
 Typical lot dimension = 60' x 132'  
 Lateral feet of street = 2,338 LF  
 Existing zoning = R18E  
 Proposed zoning = R18E  
 Approving Authorities  
 City of Kaukauna  
 Objecting Authorities  
 Department of Administration  
 Department of Public Works  
 Department of Public Safety  
 Department of Public Health

## SURVEYOR'S CERTIFICATE

I, James R. Schott, hereby certify that this Preliminary Plat is a correct representation of all existing land divisions and features, and that I have complied with the preliminary plat requirements for the City of Kaukauna.

James R. Schott, P.L.S. No. S2282

Date

Point Number	Northing	Easting	Description
500	557984.88	870465.37	CP7/HUB
501	558484.80	870366.61	CP7/RB10
502	558659.71	869905.68	CP7/RB6
503	558669.47	869087.51	CP7/MAG
504	558015.75	869313.40	CP7/MAG

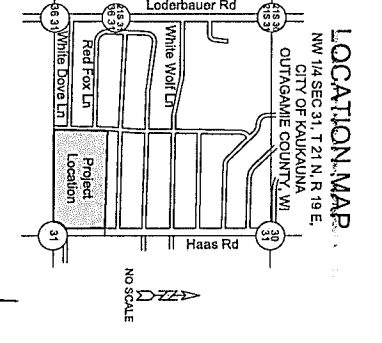
### Sanitary Structures

Structure #	Rim	Invert	Size	Material	Direction
1	725.55	715.06	8"	PVC	N
		715.06	12"	PVC	S
		715.06	8"	PVC	E
		715.06	8"	PVC	W
2	731.48	713.21	8"	PVC	N
		713.21	8"	PVC	S
		713.21	8"	PVC	E
		713.21	8"	PVC	W
3	731.86	712.44	8"	PVC	N
		712.44	8"	PVC	S

### Storm Structures

Structure #	Rim	Invert	Size	Material	Direction
A	725.81				

Bearings are referenced to the Eastline of the Northwest 1/4, Section 31, T21N, R19E, assumed to bear S04°54'17" W, based on the Outagamie County Coordinate System.



### Blue Stem Meadows West

City of Kaukauna, Outagamie County, WI  
 For: Dercks Builders & Masonry, Inc.

## PRELIMINARY PLAT

**DAVEL ENGINEERING & ENVIRONMENTAL, INC.**  
 Civil Engineers and Land Surveyors  
 1164 Provincio Terrace, Monasha, WI 54952  
 Ph: 920-991-1866 Fax: 920-441-0804  
 www.davelpro