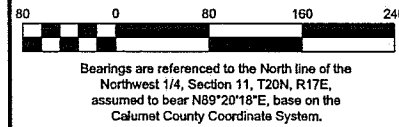
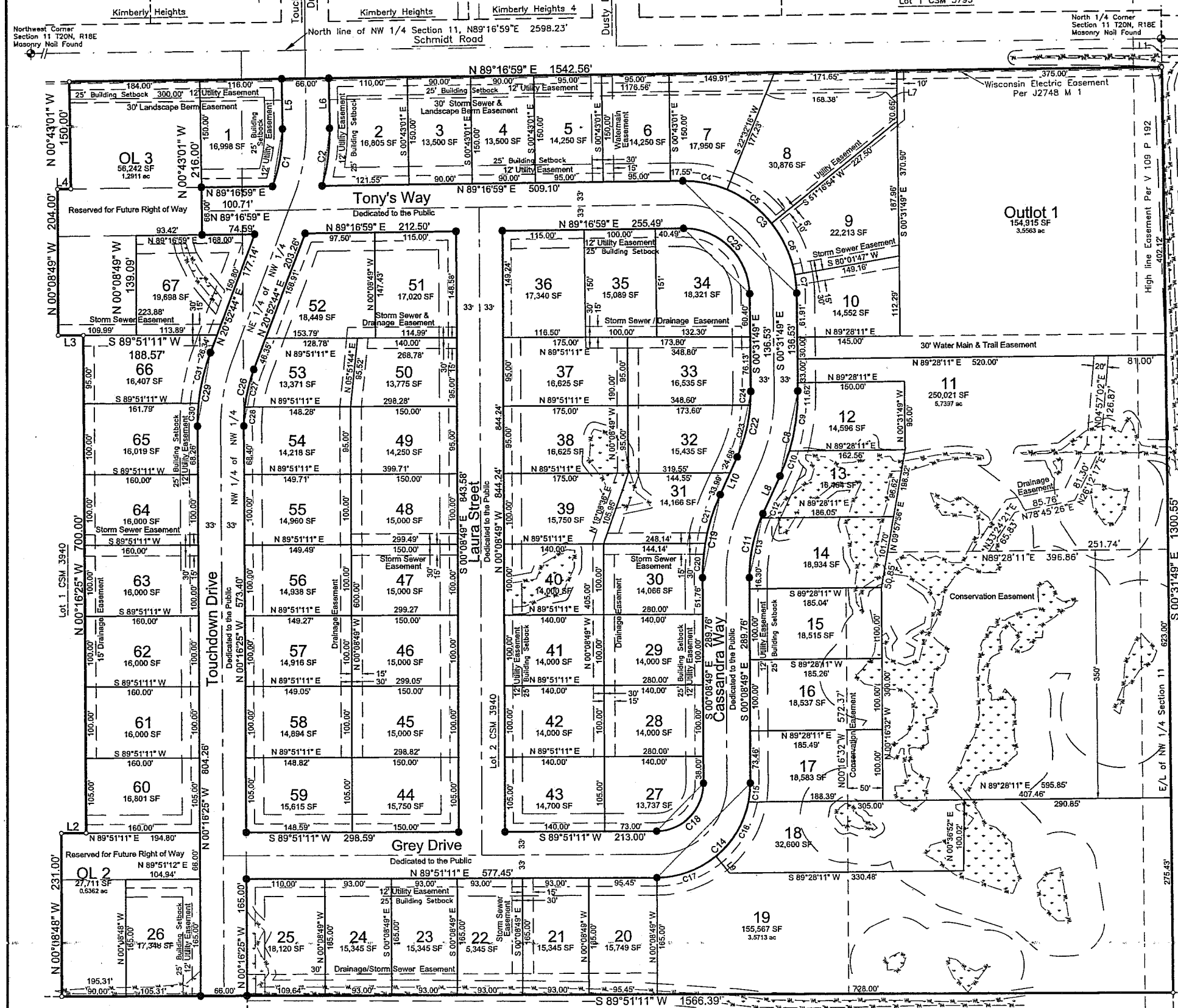


# Luniak Meadows

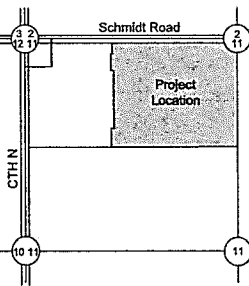
Lot 2 of Certified Survey Map 3940, being part of the Northwest 1/4 of the Northwest 1/4 and part of Northeast 1/4 of the Northwest 1/4 of Section 11, Township 20 North, Range 18 East, Village of Harrison, Calumet County, Wisconsin



Bearings are referenced to the North line of the Northwest 1/4, Section 11, T20N, R18E, assumed to bear N89°20'18"E, base on the Calumet County Coordinate System.



**LOCATION MAP**  
NW 1/4 SEC 11, T 20 N, R 18 E,  
Village of Harrison, Calumet County, WI



**LEGEND**

- 1/2" Rebar Found
- 1 1/2" x 18" Steel Rebar @ 4.30lbs/LF SET
- All Other Corners
- 2" x 18" Steel Rebar @ 1.50lbs/LF SET
- SF Lot Areas In Square Feet

**LINE TABLE**

Line	Bearing	Length
L1	S 00°31'49" E	40.00'
L2	N 88°51'11" E	34.00'
L3	N 89°51'11" E	35.31'
L4	N 89°16'59" E	18.78'
L5	N 00°43'01" W	69.99'
L6	N 00°43'01" W	69.99'
L7	S 45°09'00" E	22.86'
L8	N 24°20'35" E	58.67'
L9	S 39°23'16" E	30.64'
L10	S 24°20'35" W	58.67'

**CURVE TABLE**

Curve	Radius	Chord Direction	Chord Length	Arc Length	Central Angle	Tangent Bearing-in	Tangent Bearing-out
C1	217.00'	N 10°06'04" E	81.46'	81.84'	21°38'11"	N 20°55'10" E	N 00°43'01" W
C2	283.00'	N 07°29'40" E	80.84'	81.12'	16°25'22"	N 15°42'21" E	N 00°43'01" W
C3	158.00'	S 45°37'25" E	223.81'	248.70'	90°11'12"	N 89°16'59" E	S 00°31'49" E
C4	158.00'	N 79°05'23" W	83.69'	64.13'	23°15'17"	S 89°16'59" E	N 67°27'44" W
C5	158.00'	N 53°05'25" W	78.44'	78.20'	28°44'38"	N 67°27'44" W	N 38°43'06" W
C6	158.00'	N 24°20'40" W	78.45'	79.28'	28°44'53"	N 38°43'06" W	N 09°58'13" W
C7	158.00'	N 05°15'01" W	26.00'	26.03'	9°28'24"	N 09°58'13" W	N 00°31'49" E
C8	283.00'	S 11°54'23" W	121.89'	122.86'	24°52'24"	S 00°31'49" E	S 24°20'35" E
C9	283.00'	N 08°02'14" E	84.32'	84.63'	17°08'06"	N 00°31'49" E	N 16°36'15" E
C10	283.00'	N 20°28'26" E	38.19'	38.22'	7°44'19"	N 16°36'15" E	N 24°20'35" E
C11	217.00'	N 12°05'53" E	92.05'	92.79'	24°29'24"	S 00°31'49" E	S 24°20'35" E
C12	217.00'	S 23°27'35" W	6.89'	6.89'	1°46'00"	S 24°20'35" E	S 22°34'35" W
C13	217.00'	N 11°12'53" E	85.50'	86.06'	22°49'24"	N 22°34'35" E	N 00°08'49" W
C14	133.00'	N 44°51'11" E	188.09'	208.92'	90°00'00"	N 89°51'11" E	N 00°08'49" W
C15	133.00'	N 05°38'44" E	26.89'	26.74'	11°31'06"	N 11°22'17" E	N 00°08'49" W
C16	133.00'	N 30°59'30" E	89.32'	91.09'	39°14'27"	N 50°38'44" E	N 11°22'17" E
C17	133.00'	N 70°13'57" E	89.32'	91.09'	39°14'27"	N 89°51'11" E	N 50°38'44" E
C18	87.00'	N 44°51'00" E	94.75'	105.24'	89°59'57"	N 89°51'09" E	N 00°08'49" W
C19	283.00'	S 12°05'53" W	120.04'	120.96'	24°29'24"	S 24°20'35" E	S 00°08'49" E
C20	283.00'	S 04°45'38" W	48.42'	48.48'	9°46'53"	S 09°40'04" W	S 00°08'49" E
C21	283.00'	S 17°00'20" W	72.29'	72.48'	14°40'31"	S 24°20'35" E	S 09°40'04" W
C22	217.00'	S 11°54'23" W	93.47'	94.20'	24°52'24"	S 00°31'49" E	S 24°20'35" E
C23	217.00'	S 14°24'01" W	74.94'	75.31'	16°53'07"	S 04°27'28" W	S 24°20'35" E
C24	217.00'	S 01°57'49" W	18.89'	18.89'	4°59'17"	S 00°31'49" E	S 04°27'28" W
C25	92.00'	S 45°37'25" E	130.32'	144.81'	90°11'12"	N 89°16'59" E	S 00°31'49" E
C26	217.00'	N 10°18'10" E	79.66'	80.11'	21°09'10"	N 00°16'25" W	N 20°52'44" E
C27	217.00'	N 13°49'23" E	53.31'	53.49'	14°06'42"	N 06°46'02" E	N 20°52'44" E
C28	217.00'	N 03°14'49" E	26.65'	26.67'	7°02'28"	N 00°16'25" W	N 06°46'02" E
C29	283.00'	N 10°18'10" E	103.89'	104.48'	21°09'10"	N 00°16'25" W	N 20°52'44" E
C30	283.00'	N 02°56'48" E	31.80'	31.81'	6°26'27"	N 00°16'25" W	N 06°10'02" E
C31	283.00'	N 13°31'23" E	72.47'	72.67'	14°42'43"	N 06°10'02" E	N 20°52'44" E

There are no objections to this plat with respect to Secs. 236.15, 236.16, 236.20 and 236.21(1) and (2), Wis. Stats. as provided by s. 236.12, Wis. Stats.

Certified \_\_\_\_\_, 20\_\_

James R. Sehoff PLS 2692 Date \_\_\_\_\_

Department of Administration

File: 6614Final.dwg  
Date: 03/29/2022  
Drafted By: Jim  
Sheet: 1 of 2  
Revision Date: Mar 29, 2022



**DAVEL ENGINEERING & ENVIRONMENTAL, INC.**  
Civil Engineers and Land Surveyors  
1164 Provinta Terrace, Menasha, WI 54952  
Ph: 920-951-1886 Fax: 920-441-0804  
www.davelpro