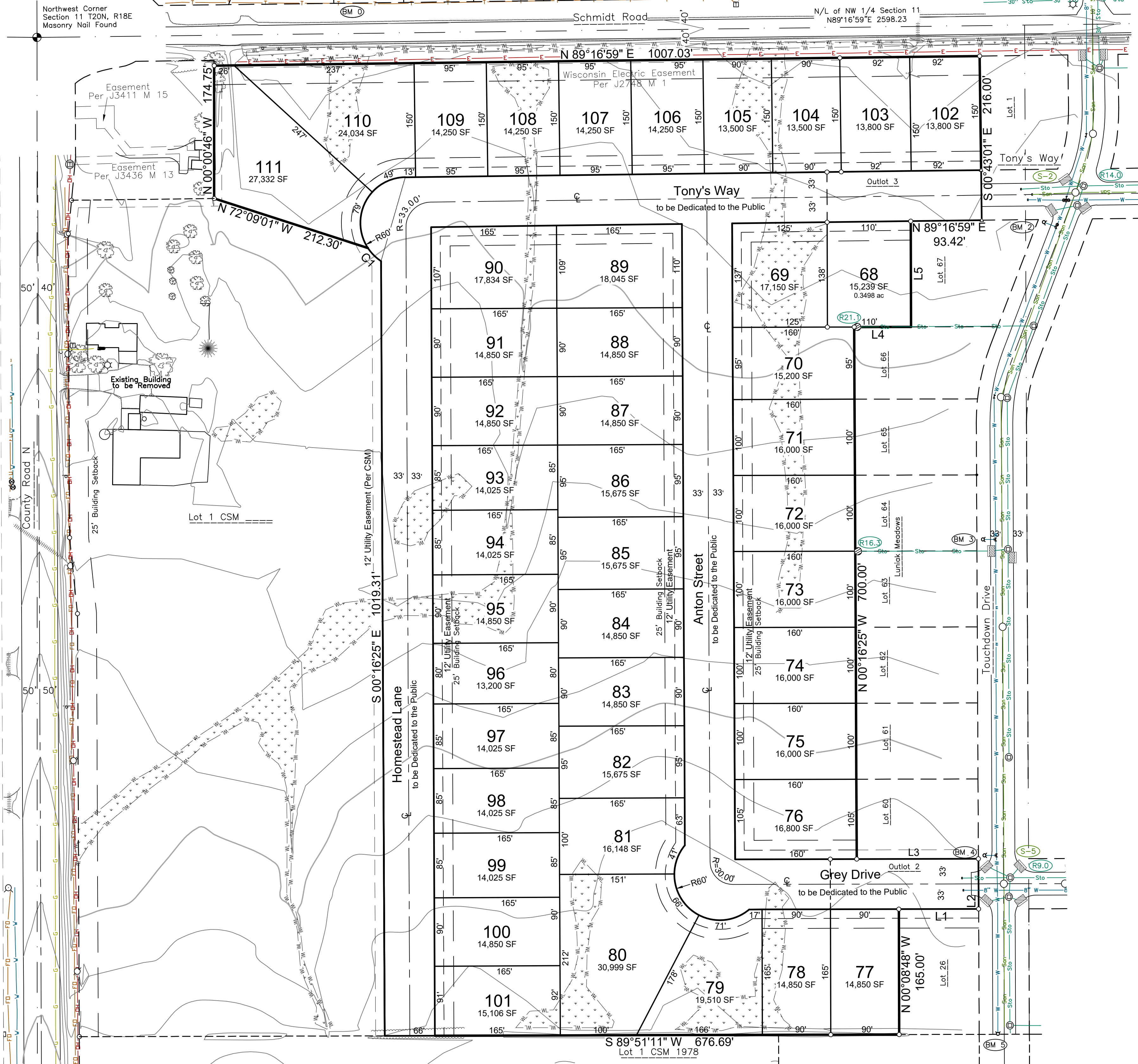


Preliminary Plat of

Luniak Meadows 2

Lot 2 of Certified Survey Map 3940, being part of the Northwest 1/4 of the Northwest 1/4 and part of Northeast 1/4 of the Northwest 1/4 of Section 11, Township 20 North, Range 18 East, Village of Harrison, Calumet County, Wisconsin



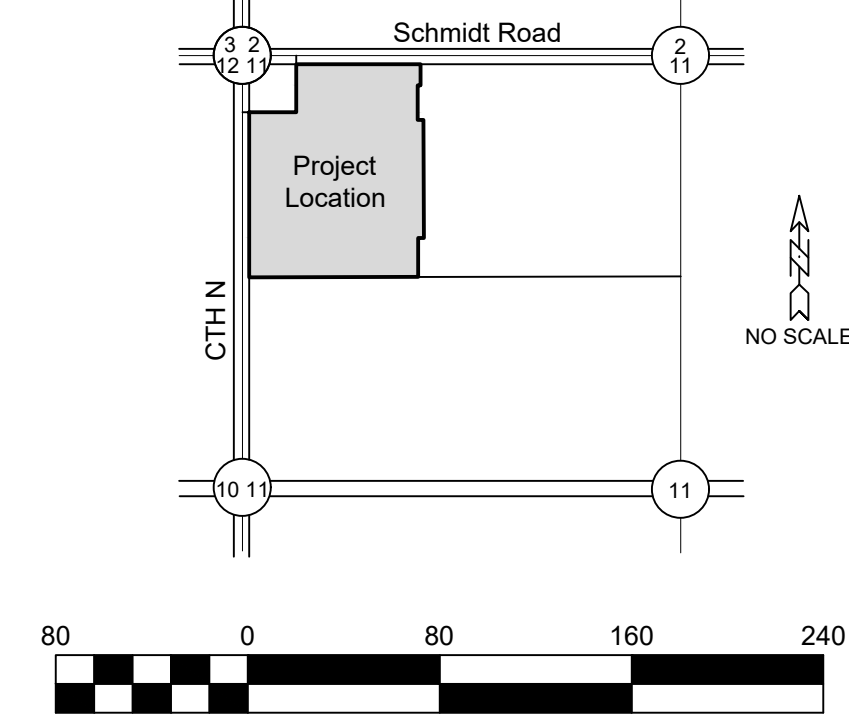
North 1/4 Corner Section 11 T20N, R18E Masonry Nail Found

BENCHMARKS (NAVD 88)

- BM 0 NGS PID DE729
Brass Disk in Concrete
Elev 791.73
- BM 1 Fire Hydrant, Tag Bolt
NW Corner of Schmidt Road and Touchdown Drive
Elev 793.88
- BM 2 Fire Hydrant, Tag Bolt
NE Cor. Lot 67
SW Int. of Tony's Way & Touchdown Drive
Elev 796.92
- BM 3 Fire Hydrant, Tag Bolt
Lot 64 West R/W Touchdown Drive
Elev 799.97
- BM 4 Fire Hydrant, Tag Bolt
SE Cor. Lot 60
NW Int. Grey Drive & Touchdown Drive
Elev 803.97
- BM 5 Fire Hydrant, Tag Bolt
Temp. Hydrant South R/W Touchdown Drive
Elev 805.44

LOCATION MAP

NW 1/4 SEC 11, T 20 N, R 18 E,
Village of Harrison, Calumet County, WI



Bearings are referenced to the North line of the Northwest 1/4 Section 11, T20N, R17E, assumed to bear N89°20'18"E, base on the Calumet County Coordinate System

SUPPLEMENTARY DATA

Total Area = 1,349,443 SF 30.9789 acres
 R/W Area = 206,279 SF 4.7356 acres
 Net Area = 1,143,164 SF 26.2434 acres
 Number of Lots = 43 lots
 Average lot size = 16,000 SF
 Typical lot dimension = 95' x 150'
 Lineal feet of street = 3,082 LF
 Existing zoning = General Agricultural (AG)
 Proposed zoning = Single-family (RS-1)
 Planned Development Overlay (PDO)

Approving Authorities
 Village of Harrison
 Objecting Authorities
 Department of Administration
 Calumet County

NOTES
 1. Utility and Drainage Easements will be shown on Final Plat

Sanitary Structures

| Structure # | Rim | Inv | Size | Material | Direction |
|-------------|--------|--------|--------|----------|-----------|
| MH 2 | 793.98 | 772.66 | 772.66 | PVC | N |
| | | | 772.66 | PVC | S |
| | | | 772.66 | PVC | E |
| | | | 772.66 | PVC | W |
| MH 5 | 801.77 | 775.36 | 775.36 | PVC | N |
| | | | 775.36 | PVC | S |

Storm Structures

| Structure # | Rim | Inv | Size | Material | Direction |
|-------------|--------|--------|--------|----------|-----------|
| MH 9 | 801.56 | 794.92 | 794.92 | HDPE | E |
| | | | 795.31 | HDPE | S |
| | | | 797.35 | HDPE | NE |
| | | | 797.35 | HDPE | NW |
| MH 14 | 793.71 | 786.46 | 786.46 | HDPE | E |
| | | | 786.89 | HDPE | W |
| | | | 788.47 | HDPE | S |
| CB 16.3 | 797.70 | 793.83 | 793.83 | HDPE | E |
| CB 21.1 | 795.02 | 790.32 | 790.32 | HDPE | E |

LEGEND

- OH Overhead Electric Lines
- San Sanitary Sewer
- Sto Storm Sewer
- E Underground Electric
- G Underground Gas Line
- W Underground Telephone
- T Trestle
- Index Contour
- Intermediate Contour
- Delineated Wetlands
- Sanitary MH / Tank / Base
- Clean Out / Curb Stop / Pull Box
- Storm Manhole
- Inlet
- Hydrant
- Utility Valve
- Utility Meter
- Water Main
- Light Pole / Signal
- Electric Pedestal
- Electric Transformer
- Air Conditioner
- CATV Pedestal
- Gas Regulator
- 1/2" Rebar Found
- 3/4" Rebar Found
- Government Corner
- Benchmark
- Asphalt Pavement
- Concrete Pavement
- Gravel
- Existing Building

LINE TABLE

| Line | Bearing | Length |
|------|---------------|---------|
| L1 | N 89°51'12" E | 104.94' |
| L2 | S 00°16'25" E | 66.00' |
| L3 | S 89°51'12" W | 160.00' |
| L4 | N 89°51'11" E | 74.69' |
| L5 | N 00°08'49" W | 139.09' |

SURVEYOR'S CERTIFICATE

I, James R. Sehloff, hereby certify that this Preliminary Plat is a correct representation of all existing land divisions and features, and that I have complied with the preliminary plat requirements for the Village of Harrison.

James R. Sehloff, P.L.S. No. S-2692 Date

DAVEL ENGINEERING & ENVIRONMENTAL, INC.
 Civil Engineers and Land Surveyors
 1164 Province Terrace, Menasha, WI 54952
 Ph: 920-991-1886 Fax: 920-441-0804
 www.davelpe.com

PRELIMINARY PLAT

Luniak Meadows 2
 Village of Harrison, Calumet County, WI
 For: Dercks DeWitt, LLC

| | |
|----------------|---------------|
| Date: | 03/12/2024 |
| Filename: | 6614Plat2.dwg |
| Author: | jim |
| Last Saved by: | jim |
| Page | 1 of 1 |