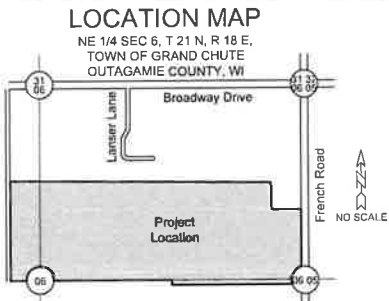


Mission Ridge North Subdivision

City of Appleton, Outagamie County, WI
For: DeWitt Development Partners, LLC



Sewer and Water shall be constructed in accordance with the City of Appleton Standard Specifications for Sewer and Water Construction and all Special Provisions of the City of Appleton.

Streets shall be constructed in accordance with the City of Appleton Standard Specifications for Highway and Structures Construction and all Special Provisions of the City of Appleton.

Contractor shall locate all buried facilities prior to excavating. This plan may not correctly or completely show all buried utilities.

The Contractor shall verify all staking and field conditions prior to constructing the work and immediately notify the Engineer of any discrepancies.

The Contractor shall comply with all conditions of the Erosion Control Plan and the Storm Water discharge Permit. All Erosion Control shall be done in accordance with the Plan and Wisconsin DNR Technical Standards.

The outside services are shown to stop at a point 5 feet outside the foundation wall. The Contractor shall be responsible for coordination of continuation of the services into the building to properly coincide with the interior plumbing plans, and compliance with all plumbing permits.

The Contractor is responsible for compliance with Department of Safety & Professional Services, Chapter SPS 382, for lateral construction and clearance locations.

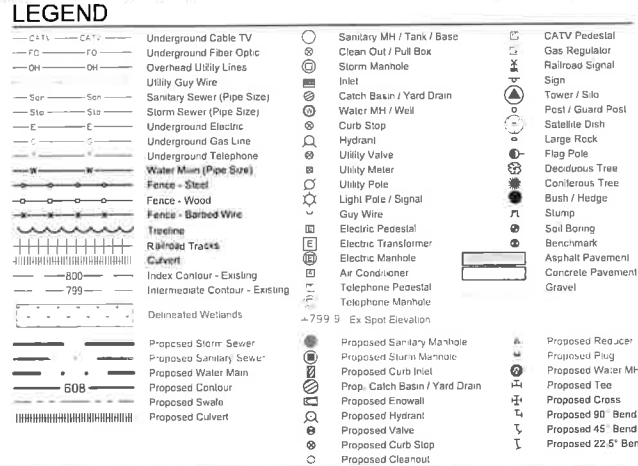
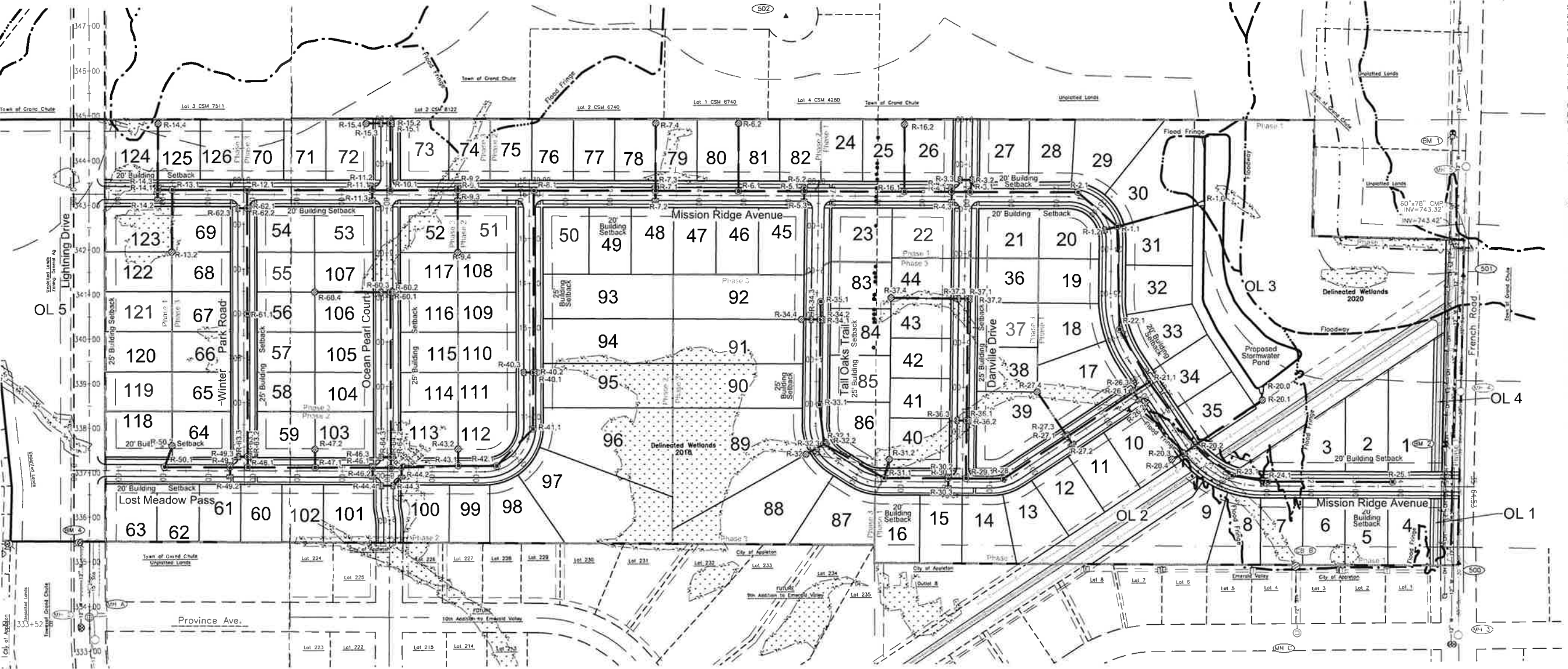
The contractor shall coordinate with provider for electric, gas, and telecommunication service connection and relocations.

Pipe lengths are measured to center of structure. Endwalls are included in pipe length.

Water Pipe shall be PVC C900 D(18), with minimum of 18 gauge, insulated (blue), single-conductor copper tracer wire, or equivalent, per SPS 382.40 (8)(k).

Sanitary Sewer Pipe Main shall be PVC SDR(35), with minimum of 18 gauge, insulated (green), single-conductor copper tracer wire, or equivalent, per SPS 382.50 (11)(h). Sanitary Sewer laterals shall be PVC Schedule 40.

Storm Sewer Pipe shall be PVC SDR(35), Reinforced Concrete Class III, or HDPE, AASHTO M 294, Type S with water tight joints, with minimum of 18 gauge, insulated (brown), single-conductor copper tracer wire, or equivalent, per SPS 382.36 (7)(d)10.a.



SHEET INDEX:

Sheet	Page
Improvement Plans	1.0
Topographic Survey	1.1
Drainage and Grading Plan	1.2
Erosion & Sediment Control Plan	1.3
Construction Details	2.1
Sewer & Water Details	2.2
Erosion & Sediment Control Details	2.3
Stormwater Pond Details	2.4
Plan & Profile: Mission Ridge Ave. - Sta 0+00 to 11+00	3.1
Plan & Profile: Mission Ridge Ave. - Sta 11+00 to 22+00	3.2
Plan & Profile: Mission Ridge Ave. - Sta 22+00 to 29+00	3.3
Plan & Profile: Mission Ridge Ave. - Sta 29+00 to 35+64.33	3.4
Plan & Profile: Long Meadow Pass - Sta 0+00 to 10+00	3.5
Plan & Profile: Long Meadow Pass - Sta 10+00 to 16+30.88	3.6
Plan & Profile: Tall Oaks Trail - Sta 0+00 to 7+00	3.7
Plan & Profile: Tall Oaks Trail - Sta 0+00 to 14+48.25	3.8
Plan & Profile: Winter Park Road - Sta 0+00 to 6+83.44	3.9
Plan & Profile: Ocean Pearl Court - Sta 0+00 to 9+51.10	3.10
Plan & Profile: Danville Drive - Sta 0+00 to 8+42.84	3.11

IMPROVEMENT PLANS



DAVEL ENGINEERING & ENVIRONMENTAL, INC.
Civil Engineers and Land Surveyors
1164 Province Terrace, Menasha, WI 54952
Ph: 920-991-1866 Fax: 920-441-0804
www.davel.pro

Project Number: 8615
May 27, 2025
Page 1.0

5/29/2025 10:04 AM J:\Projects\8615\8615.dwg Civil 3D\8615.dwg Printed by: Jennifer