

# STATE COOPERATIVE PROGRAMS-DIVISION OF MILK SAFETY REPORT

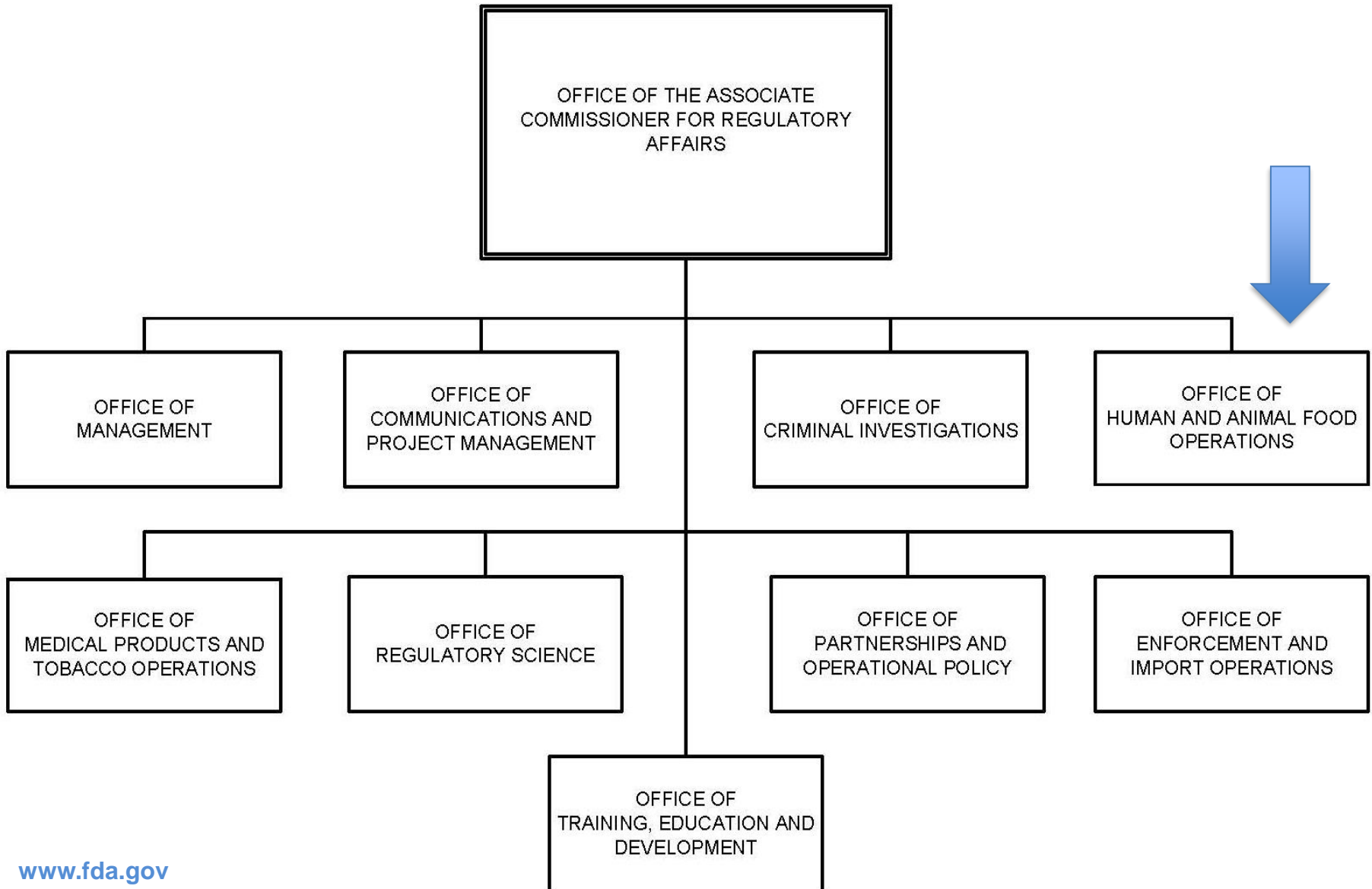
**TIM RODDY  
MILK SAFETY DIVISION  
BRANCH #2 DIRECTOR  
JULY 2022**

# PRESENTATION OBJECTIVES

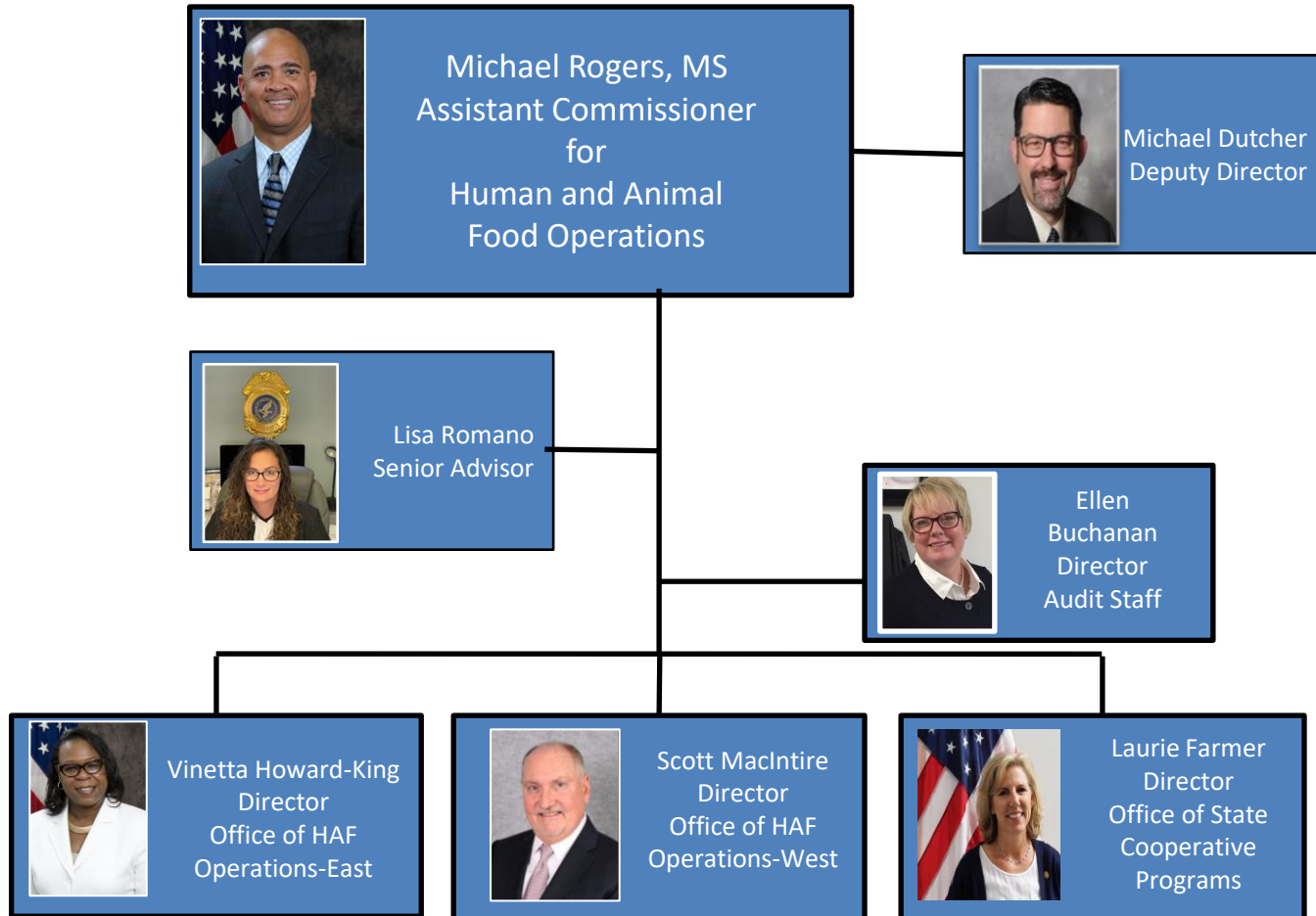
- ID key organizational contacts  
Hiring efforts and new  
Specialist faces you may be  
seeing.
- Program Priorities
- Training Plans
- FDA Funding Support.

# Office of Regulatory Affairs

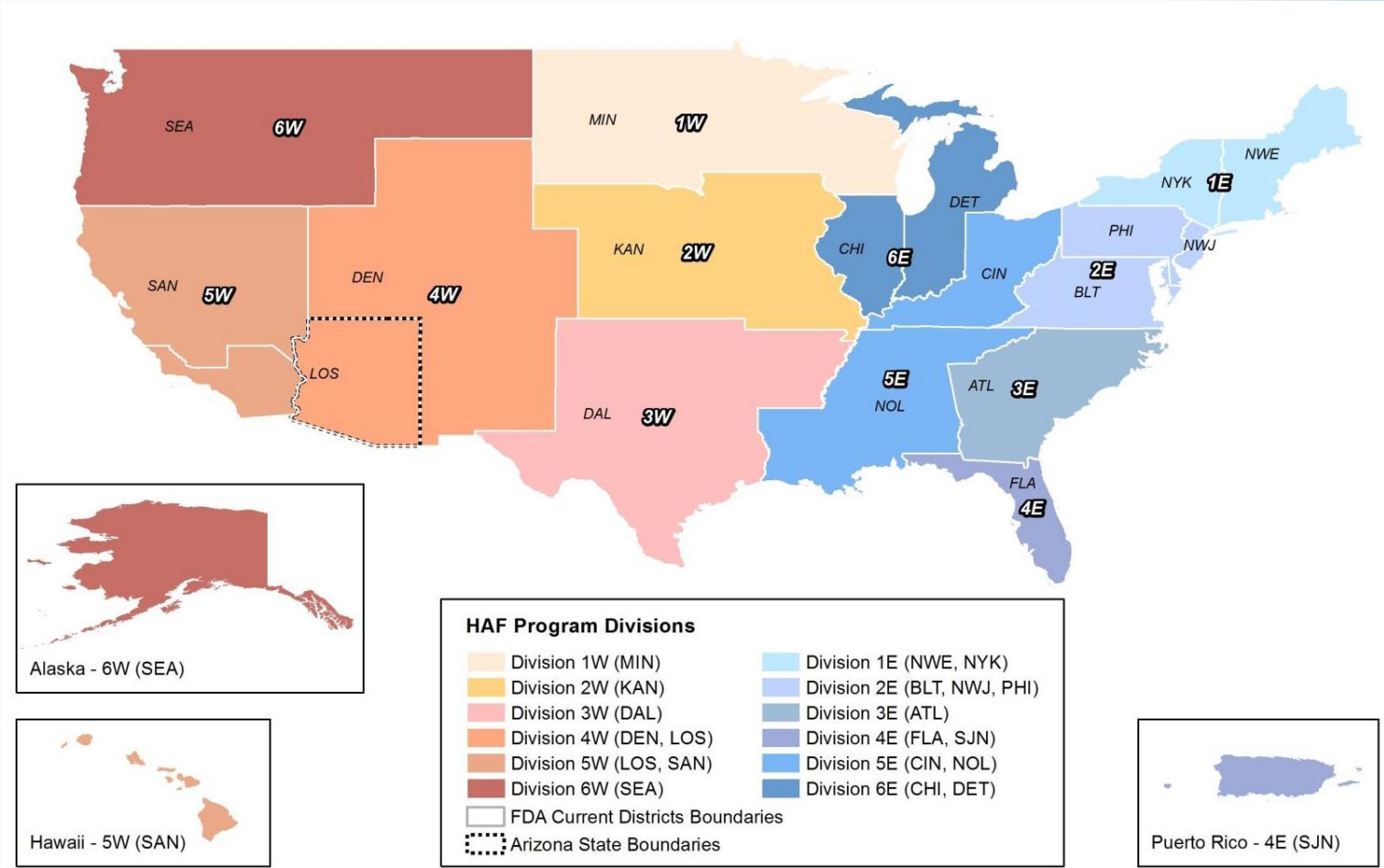
FDA



# Office of Human and Animal Food Operations



# Office of Human and Animal Food Operations





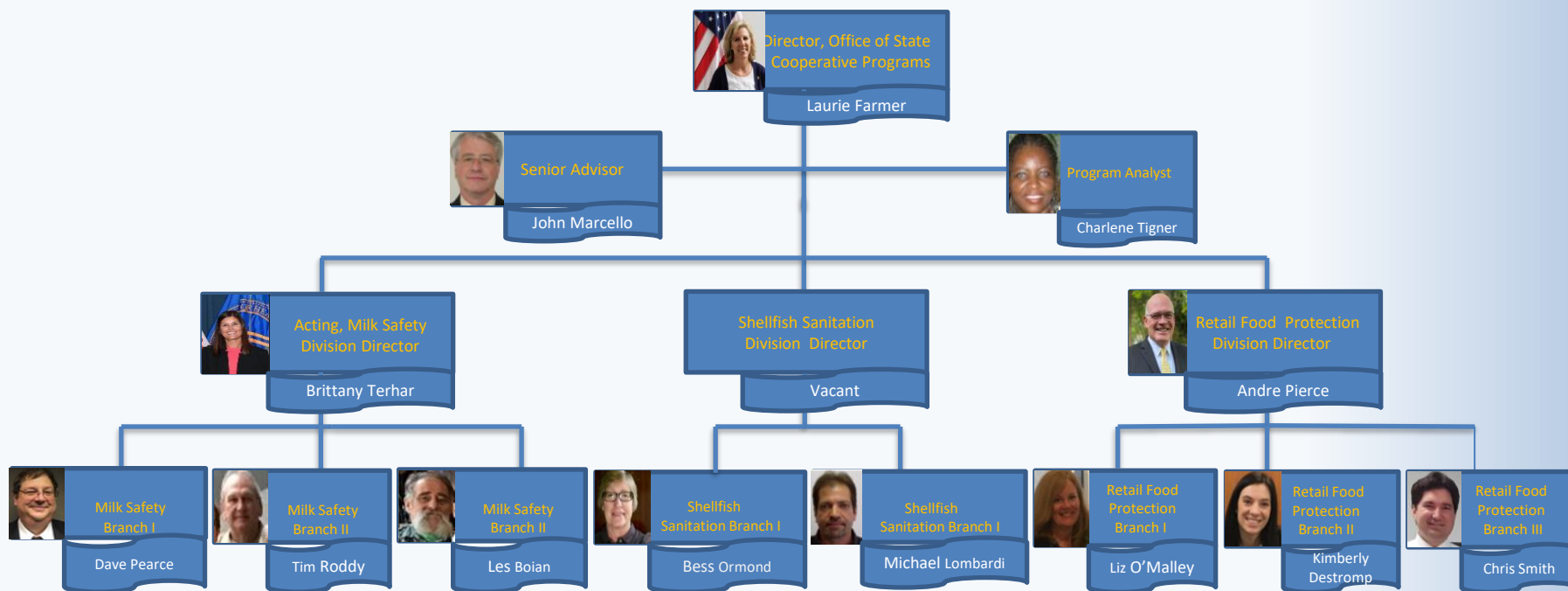
# FDA Contacts and Resources

## Human and Animal Foods (HAF)

- State Cooperative Programs: Specialists and Branch Directors
- Manufactured Foods inquiries: HAF Program Division Directors (non-grade A)
- State and local inquiries: State Liaison
- [www.FDA.gov/ORA](http://www.FDA.gov/ORA)
  - OHAFO Fact Sheet
  - Leadership Contact Information
  - Investigations Operations Manual



## Office of State Cooperative Programs



# Division of Milk Safety Program Scope

FDA



- All 50 States; Puerto Rico
- **Two** Foreign Party Auditing Firms



9.32 Million Dairy Cows



55,000 Firms

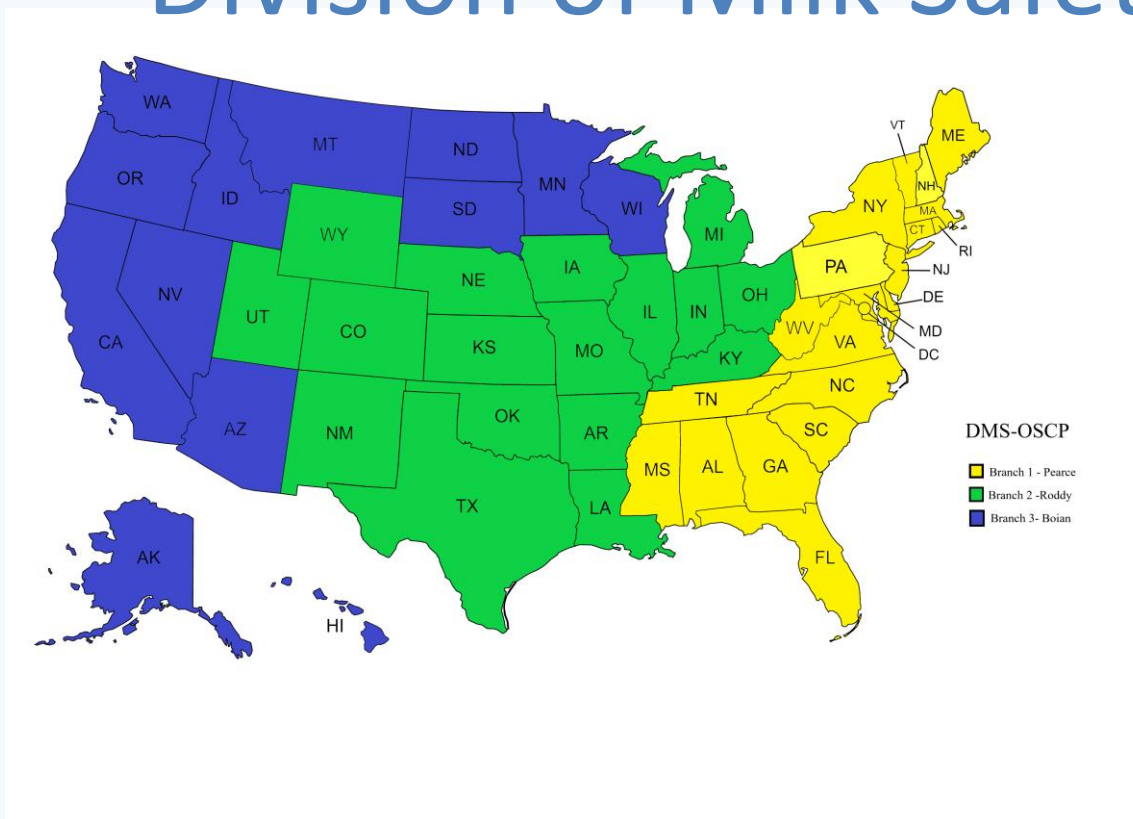


~20 Billion Gallons of Milk



~700 Dairy Food Processors

# Division of Milk Safety Staff



3 Milk Safety  
Branches  
Nationwide

18 Milk Specialists  
1 Program Support  
Specialist  
3 Branch Directors  
2 Vacant Milk  
Specialist  
1 Vacant Division  
Director

# THE NATIONAL MILK SAFETY TEAM



**FDA U.S. FOOD & DRUG  
ADMINISTRATION**

CENTER FOR FOOD SAFETY & APPLIED NUTRITION

Office of Food Safety



**Steering Committee Serves  
as Forum for FDA  
Components to Deliberate  
Issues Impacting FDA's Milk  
Safety Program**

**FDA U.S. FOOD & DRUG  
ADMINISTRATION**

OFFICE OF REGULATORY AFFAIRS

Office of State Cooperative Programs

**FDA U.S. FOOD & DRUG  
ADMINISTRATION**

OFFICE OF REGULATORY AFFAIRS

Office of Partnerships

**FDA U.S. FOOD & DRUG  
ADMINISTRATION**

OFFICE OF REGULATORY AFFAIRS

Office of Training, Education and  
Development

# Branches

Bran	Title	Name	States/Territories Located in Branch
<b>Milk Safety Branch 1</b>	Branch Director	David Pearce (7 MSs)	AL, CT, DE, FL, GA, MA, MD, ME, MS, NC, NH, NJ, NY, PA, PR, SC, TN, RI, VA, VT, WV
<b>Milk Safety Branch II</b>	Branch Director	Tim Roddy (7 MSs)	AR, CO, IA, IL, IN, KS, ,KY, MI, MO, NE, NM, LA, OH, OK, TX, UT, WY
<b>Milk Safety Branch III</b>	Branch Director	Les Boian (6 MSs)	AK, AZ, CA, HI, ID, MN, MT, ND, NV, OR, SD, WA, WI

# Current FTE Ceiling for OSCP Milk Safety Division

## 20 Milk Specialists

Branch I (Pearce) - 7 MSs

Branch II (Roddy) - 7 MSs

Branch III (Boian) - 6 MSs

## New Milk Specialists Branch 1

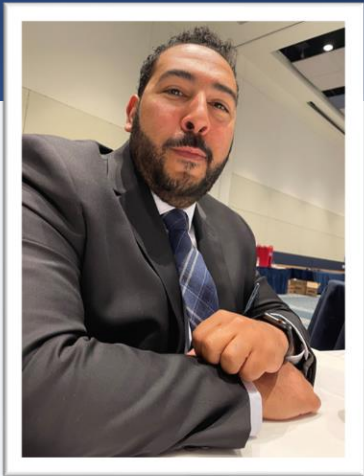


Barb Williams – MA, RI and VT

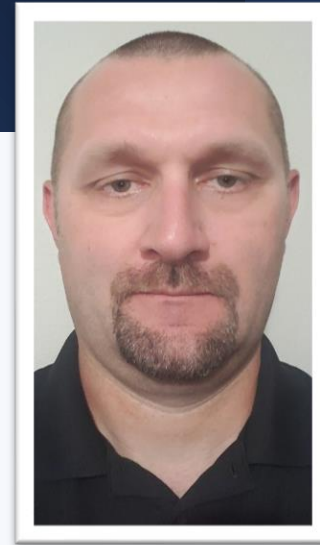


Lyndsay Perryman – CT, NH, ME

## New Milk Specialists Branch 1



Justin Holder – DE and PA



Zach Conlin – NC, SC, MS TN

## New Milk Specialists Branch 2



Sam Carter – Arkansas, Texas



Clint George – LA, NM, OK, UT

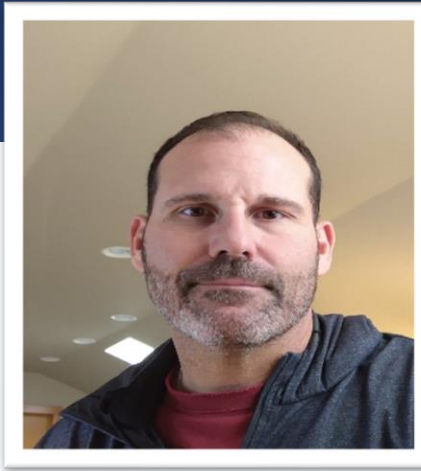


Anna Tucker – IA, MO

## New Milk Specialists Branch 3



Anna Vickrey – AZ, CA, HI



Rob Vezzetti – OR, NV



Franklin (Skip) Heisler – MN, ND, SD

# New Hires for Division



Currently Hiring One MS for CA(1)

[USAJOBS.GOV](https://www.usajobs.gov)

# Retirements

Don Goldsmith –  
January of 2020

Steve Himebaugh –  
October of 2021

# DMS Priorities

## State Rating Officer Certifications

- FDA criteria for planning future standardization of State officials:
- High priority (HP) is urgent need for a replacement SRO, and re-certification of past due SROs.

Priority (P) are SROs past due or coming due in 2022.

Current (C) are SROs that will be coming due in 2023 and later.

### Totals:

- Current Number of State Rating Officers (SROs): 132
- High Priority: 45
- Priority: 34
- Current: 53

# State Rating Officer Certifications

## Where are We from COVID

- Projected to be caught up by end of FY22.
- Division will be caught up everywhere but CA and DMS is refocusing resources to get that state on their timelines.

# State Program Evaluations

- FY2020 - 10 SPEs
- FY2021 - 15 SPEs
- FY22- 15 SPEs already completed
- FY22 - 7 SPEs additionally projected for an FY total of 22.

# State Program Evaluations after FY22 Projections

- DMS still trying to catch up on the timelines and has a strategy in place to do so.
- Should be caught up on all timelines for all States by Close of FY23.

# OTED Sponsored Training



- Independent Course Delivery (ICD) and Train-the-Trainer (TTT) programs
- OPTIONS: OTED Plan for Expanding Course Options Still have the States as Traditional Hosts (Replace Course in the Box)
- Training Needs Survey (Restructure)
- Tentatively Will have Five Courses Scheduled for FY2023. (1- Farm, 1-Plant, 2-HTST, and 1-PC Courses Planned)


# Tentative 2023 Training Virtual

Course ID	Course Name	Locations	Course Dates
<b>FD375</b>	Dairy Farm Sanitation & Inspections	Virtual	TBD
<b>FD371</b>	Milk Pasteurization Controls & Tests	Virtual (2)	TBD
<b>FD373</b>	State Milk Laboratory Evaluation Officer Workshop (LEO)	Virtual	TBD
<b>FD378</b>	PC for Grade A Dairy Plant Reg Course	Virtual	TBD
<b>FD374</b>	<b>Laboratory Examinations of Dairy Products</b>	<b>At Site</b>	TBD
<b>FD372</b>	Milk Plant Sanitation and Inspection	Virtual	TBD

# FD577 Special Problems Course(s)

- Tentative for December of 2022 and February for 2023.
- Virtual or face-to-face is in discussion and TBD before CA Portal Opening.

# Future Milk Seminars

- One Seminar per Year
  - East/West Concept
- 
- East – Fall after NCIMS Conference
  - West – Spring of the Even Numbered Years
  - Continue to Provide Funding Option Through Cooperative Agreement

# Future Milk Seminars

- Eastern Seminar confirmed to be held in the Fall of 2023 in Nashville, Tennessee. We are planning in coordination with the Eastern Seminar Group on a possible virtual training for SROs and Inspectors in the Fall of 2022.
- Western Seminar projected to be held in the Spring of 2024 in Texas?

# Cooperative Agreement (Grant) for Milk and Shellfish

Set to Expire by the End of 2024

Going Forward and a Look Back!

# Milk /Shellfish Cooperative Agreement 2017-2019

\$900,000 available per year - 25% admin fee =

\$675,000 per year



2017	Program	Amount Requested	Amount Awarded	Total Paid
	Milk Training	\$727,057.80	\$370,789.89	\$233,966.75
	Total Training	\$727,057.80	\$370,789.89	\$233,966.75
	Milk Equipment	\$5,584.00	\$3,702.00	\$3,608.92
	Total Equipment	\$5,584.00	\$3,702.00	\$3,608.92
	Total Milk	\$732,641.80	\$374,491.89	\$237,575.67
	Grand Total	\$732,641.80	\$374,491.89	<b>\$237,575.67</b>
2018	Program	Amount Requested	Amount Awarded	Total Paid
	Milk Training	\$562,174.43	\$468,537.14	\$303,127.51
	Total Training	\$562,174.43	\$468,537.14	\$303,127.51
	Milk Equipment	\$70,659.29	\$71,734.52	\$59,554.20
	Total Equipment	\$70,659.29	\$71,734.52	\$59,554.20
	Total Milk	\$632,833.72	\$540,271.66	\$362,681.71
	Grand Total	\$632,833.72	\$540,271.66	<b>\$362,681.71</b>
2019	Program	Amount Requested	Amount Awarded	Total Paid
	Milk Training	\$842,092.79	\$692,034.28	\$471,581.36
	Total Training	\$842,092.79	\$692,034.28	\$471,581.36
	Milk Equipment	\$193,240.64	\$193,240.64	\$177,105.58
	Total Equipment	\$193,240.64	\$193,240.64	\$177,105.58
	Total Milk	\$1,035,333.43	\$885,274.92	\$648,686.94
	Grand Total	\$1,035,333.43	\$885,274.92	<b>\$648,686.94</b>

## Milk /Shellfish Cooperative Agreement 2017-2019



<b>Final Totals</b>		<b>\$2,400,808.95</b>	<b>\$1,800,038.47</b>	<b>\$1,248,944.32</b>
<b>Total Available 2017-2019</b>		<b>\$2,025,000.00</b>		
<b>Total Paid (milk) 2017-2019</b>		<b>\$1,248,944.32</b>		
<b>Balance carried over</b>		<b>\$46,167.42</b>		

# Milk /Shellfish Cooperative Agreement 2020-2022

**\$3,000,000 available per year - 25% admin fee = \$2,250,000 per year**

	Program	Amount Requested	Amount Awarded	Total Paid
<b>2020</b>	Milk Training	\$1,239,513.27	\$1,211,375.27	\$187,024.22
	Total Training	\$1,239,513.27	\$1,211,375.27	\$187,024.22
	Milk Equipment	\$669,296.52	\$613,873.51	\$490,162.95
	Total Equipment	\$669,296.52	\$613,873.51	\$490,162.95
	Total Milk	\$1,908,809.79	\$1,825,248.78	\$677,187.17
	Grand Total	\$1,908,809.79	\$1,825,248.78	<b>\$677,187.17</b>

	Program	Amount Requested	Amount Awarded	Total Paid
<b>2021</b>	Milk Training	\$569,653.18	\$398,060.00	
	Total Training	\$569,653.18	\$398,060.00	\$0.00
	Milk Equipment	\$751,324.00	\$673,062.00	
	Total Equipment	\$751,324.00	\$673,062.00	\$0.00
	Total Milk	\$1,320,977.18	\$1,071,122.00	\$0.00
	Grand Total	\$1,320,977.18	\$1,071,122.00	<b>\$0.00</b>

# Milk /Shellfish Cooperative Agreement

## 2020-2022

	Program	Amount Requested	Amount Awarded	Total Paid
2022	Milk Training	\$763,687.36	\$619,457.00	
	Total Training	\$763,687.36	\$619,457.00	\$0.00
	Milk Equipment	\$815,517.73	\$804,489.86	
	Total Equipment	\$815,517.73	\$804,489.86	\$0.00
	Total Milk	\$1,579,205.09	\$1,423,946.86	\$0.00
	Grand Total	\$1,579,205.09	\$1,423,946.86	\$0.00

# CA Guidance

- Anything dairy related is being considered currently even if it is not 100% dedicated to Grade A.
- Still cannot fund such things as extended warranties, subscriptions, clothing, Agency Swag.
- [Belinda.Clifton@fda.hhs.gov](mailto:Belinda.Clifton@fda.hhs.gov) can be contacted or communicate back through your MS.

## **Milk /Shellfish Cooperative Agreement 2022- Current**

<b>2022 Award Budget</b>	<b>\$2,663,635</b>
<b>Funds available from prior years</b>	<b>\$3,957,594</b>
<b>Total Funds Available to Award</b>	<b>\$6,621,229</b>
<b>Minus 55 training grants awarded 12/9/21</b>	<b>\$893,446</b>
<b>Funds available for 2022 Equipment awards</b>	<b>\$5,727,783.00</b>
<b>Minus 48 Milk Equipment awards</b>	<b>\$804,489.86</b>
<b>Minus shellfish equipment awards</b>	<b>\$671,352.00</b>
<b>For both programs Total funds available for FY2023</b>	<b>\$4,251,942.00</b>

Carry over from FY22 is 4.25 for both programs

- For Grant year FY23 there is a likely to be a holdover of funds because of the carryover.
- The new Cooperative Agreement is scheduled to go back to a 3 yr agreement so we can adjust easier in future years. The next one should be from 2025-2028, the \$\$ amount per year is yet to be determined.

# DMS Contacts

- **Brittany D. Terhar**

Acting Director, Division of Milk Safety  
Office of State Cooperative Programs  
515-344-5552

[Brittany.Terhar@fda.hhs.gov](mailto:Brittany.Terhar@fda.hhs.gov)

- **David Pearce**

Director, Division of Milk Safety Branch I  
Office of State Cooperative Programs  
717-364-6606

[David.Pearce@FDA.HHS.GOV](mailto:David.Pearce@FDA.HHS.GOV)

- **Timothy S. Roddy**

Director Division Milk Safety Branch II  
Office of State Cooperative Programs  
(913) 752-2402

[Timothy.rodny@fda.hhs.gov](mailto:Timothy.rodny@fda.hhs.gov)

- **Lester Boian**

Director Division Milk Safety Branch III  
Office of State Cooperative Programs  
(509) 353-2136 x103

[Les.boian@fda.hhs.gov](mailto:Les.boian@fda.hhs.gov)

- <https://www.fda.gov/food/federalstate-food-programs/milk-safety-programs-contacts-fda-personnel>

# Questions