



Agricultural Marketing Service
U.S. DEPARTMENT OF AGRICULTURE



USDA AMS Dairy Program Update

National Association of Dairy Regulatory Officials

Burlington, VT

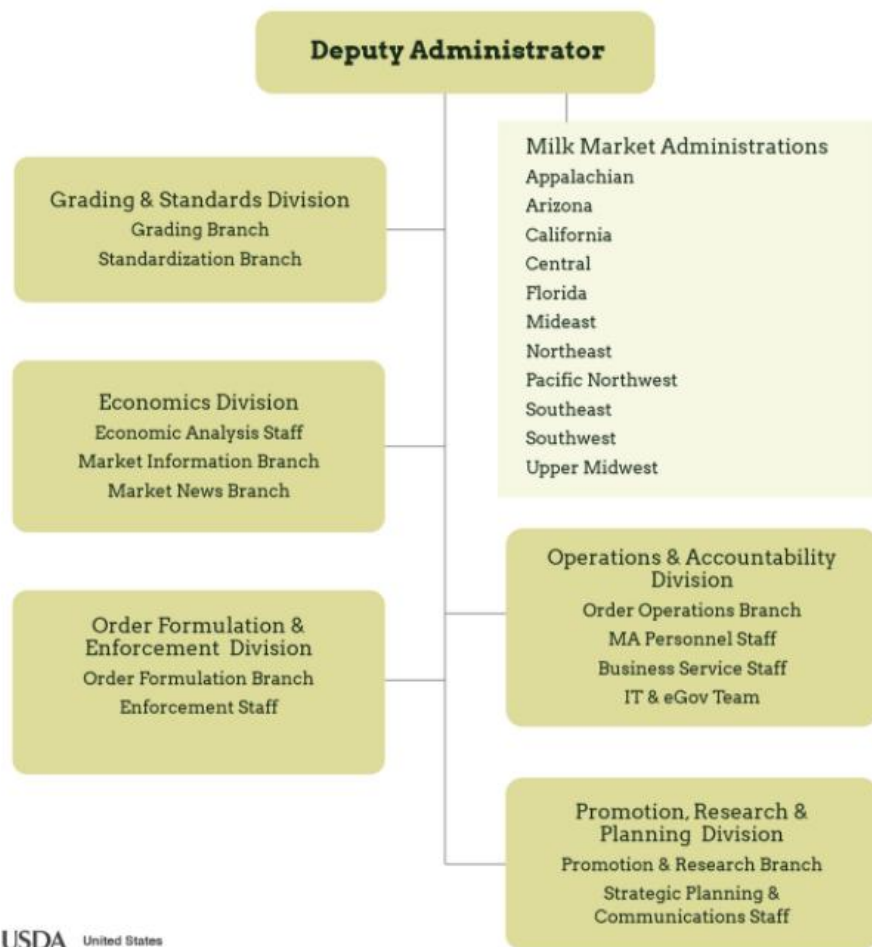
July 15, 2025

Chris Thompson, International Standards Director
USDA/AMS/Dairy Program





AMS Dairy Program



Federal Milk Marketing Orders (FMMO)

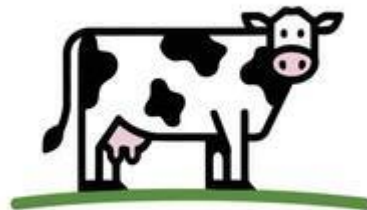
- On June 1, 2025, USDA implemented most of the changes to the uniform pricing formulas applicable in all 11 Federal milk marketing orders (FMMOs).
 - ✓ Result of a 49-day national hearing Aug. 23, 2023, to Jan. 30, 2024
 - ✓ Rulemaking process,
 - ✓ Producer referendum held in each FMMO.
- The amendments are in five price-formula areas
 - ✓ Skim milk composition factors,
 - ✓ Commodity product prices,
 - ✓ Class III and Class IV formula factors,
 - ✓ Base Class I skim milk, and
 - ✓ Class I and Class II differentials.
- June 2025 milk prices reflect the uniform pricing formula amendments with the exception of milk composition factors. Amendments to skim milk composition factors will be implemented December 1, 2025.



Dairy Program contact:
FMMOhearing@usda.gov

Dairy Market News

- Unbiased price data and market commentary
- Real time market insight
- Domestic & international market conditions
- Trends
- Identification of market patterns



Dairy Market News Contact: We want you!

Dairy Program contact, Director, Economics Division:
Lorie Cashman

Lorie.Cashman@usda.gov

USDA Agricultural Marketing Service
U.S. DEPARTMENT OF AGRICULTURE

DAIRY MARKET NEWS
WEEK OF JUNE 26 - JULY 4, 2025

WEEK OF JUNE 26 - JULY 4, 2025
VOLUME 75, REPORT 27

DAIRY MARKET NEWS AT A GLANCE

CME GROUP CASH MARKETS (7/3)

BUTTER: Grade AA closed at \$2.6050. The weekly average for Grade AA is \$2.5969 (+0.0091).

CHEESE: Barrels closed at \$1.7300 and 400 blocks at \$1.6850. The weekly average for barrels is \$1.7158 (+0.0753) and blocks \$1.7006 (+0.0536).

MONDAY DRY MILK: Grade A closed at \$1.2500. The weekly average for Grade A is \$1.2594 (+0.0074).

DRY WHEY: Extra grade dry whey closed at \$0.6075. The weekly average for dry whey is \$0.6009 (+0.0061).

BUTTER HIGHLIGHTS: Domestic butter demand is steady in the East and West regions. Domestic butter demand is lighter in the Central region. Demand from international buyers is strong. Although cream volatilities are tightening in some parts of the country, butter manufacturers throughout the country indicate receiving ample amounts of cream for better manufacturing needs. Butter production schedules vary from steady to lighter for the holiday week. Bulk butter overages range from 7 cents below to 5 cents above market across all regions.

CHEESE HIGHLIGHTS: Block and barrel prices are trending upward in the CME this week. Contractual Class III milk load commitments to cheese manufacturers are being met. Cheese production schedules are mostly steady. Seller's report domestic as steady or lighter with shorter holiday week at hand. Export demand is stronger. High summer temperatures in the Central region are contributing to lighter milk output, and some cheesemakers say they are turning to the spot market to secure sufficient volumes to run full production schedules. Class III milk prices range from \$8 to \$1 under, as of reporting. Cheese production is steady to lighter in the Central region. Milk handlers indicate Class III milk demand from cheese manufacturers is strong. However, increasing temperatures in the West region are generally decreasing farm level milk output, which is tightening spot milk availability in much of the region. Cheese production schedules are steady for the most part. Some manufacturers report that spot milk availability is not plentiful enough to run full capacity production schedules.

schedules.

FLUID MILK HIGHLIGHTS: Milk production is lighter for much of the nation. Many subdivisions indicate higher temperatures are playing a part in decreasing milk output. Some lighter manufacturing schedules this holiday week are lessening the impact of declining milk production. Some handlers note 2025 milk production is up on a year-over-year basis heading into July. Some manufacturers are purchasing additional spot volumes to fill gaps. Class I demand is seasonally lighter. Class II, III, and IV demands are mixed for the holiday week. Demand for condensed skim milk is steady. Condensed skim milk loads are somewhat more available. Cream multiples for all Classes range 1.15-1.32 in the East, 1.08-1.23 in the Midwest, and 1.04-1.20 in the West.

DRY PRODUCTS HIGHLIGHTS: Low-moisture heat-treated dry milk (NDM) prices moved lower in the West and at the top of the range and steady price series in the Central and East regions. Contacts report lighter interest from domestic and international purchasers. High heat NDM prices increased at the bottom of the range in the Central and East regions but moved lower at the bottom of the range in the West. High heat NDM production remains light, and inventories are tight in the Central and East regions. Dry buttermilk prices are unchanged in the Central and East regions, but the range moved slightly lower in the West. Demand for dry buttermilk softened ahead of July 4th in the Central and East, but contacts in the West reported steady demand. Dry whole milk prices are down slightly. In all regions the dry whey price ranges moved higher this week. Contacts in the Central and East regions say domestic demand for dry whey is strengthening. Dry whey inventories are tight but are more available in the West than in the Midwest. Prices for whey protein concentrate 34% moved lower at the bottom of the range this week, and increasing production. The lactose prior range moved higher. Contacts say domestic demand is solid, but spot inventories are tight. Acid and renet casein prices moved lower this week.

CONTINUED ON PAGE 1A

TABLE OF CONTENTS

Product Highlights (CME DMM) at a Glance	1	Dry Whey/NDM 14% Lactose/Protein	11	May Ag Prices	11
Weekly CME Cash Trading Market	2	U.S. Dairy Cow Weighted Class Milk Prices	12	DMM Monthly Averages	12
Class III Milk	3	International Dry Market News	13	Dairy Supply	13
Weekly Dry Milk	4	Dry Whey	14	Dairy Demand Report (Daily)	14
Weekly Dry Milk Dry Buttermilk	5	May Dairy Products	15	Dairy Market News Contact	15

DAIRY MARKET NEWS PRICE SUMMARY FOR JUNE 26 - JULY 4, 2025

PRICE \$/LB & CHANGES FROM PREVIOUS PUBLISHED PRICES

Commodity	Range	Monthly	Commodity	Range	Monthly	Commodity	Range	Monthly
Central Low/Mid Heat	1.2500 - 1.3000	1.2400 - 1.2600	Central East	1.1800 - 1.2000		Central West	0.3750 - 0.5200	0.4200 - 0.4400
Change	N.C.	-0.0200 -0.0100 -0.0100	Change	N.C.	N.C.	Change	0.0050 0.0200 0.0200	N.C.
Central High Heat	1.3500 - 1.4100		West	1.1800 - 1.2700	1.2000 - 1.2500	WPC 34%		
Change	0.0100	N.C.	Change	-0.0050 -0.0100	N.C.	0.0100	Central West	1.4000 - 1.5000 - 1.6000
West Low/Mid Heat	1.2000 - 1.3000	1.2100 - 1.2600	DRY WHEY			CASEIN	1.4000 - 1.5000 - 1.6000	
Change	0.0100 -0.0100 -0.0200 -0.0200		Central	0.4000 - 0.5000 - 0.5500 - 0.5700		Bestest	3.4000 - 3.7500	
West High Heat	1.3200 - 1.3900		Change	0.0200 0.0100 0.0200	N.C.	Acid	3.3000 - 4.1000	
Change	-0.0110	N.C.	West	0.5100 - 0.5900 - 0.5800 - 0.5900		Change	0.0000 -0.2100	
DRY WHOLE MILK			Northwest	0.6100 - 0.7000		ANIMAL FEED WHEY		
National	Change -0.0200 -0.0200		Change	0.0100 0.0100		Central	0.3400 - 0.3700	
						Change	0.0100 0.0200	

DAIRY MARKET NEWS PRICE SUMMARY FOR JUNE 22 - JULY 4, 2025

PRICE \$/LB & CHANGES FROM PREVIOUS PUBLISHED PRICES

Commodity	Range	Commodity	Range	Commodity	Range
Europe	2725 - 2900	Europe	4950 - 5225	W. Europe	6500 - 6975
Change	-25 -25	Change	25	Change	75
Oceania	2700 - 2825	Oceania	3750 - 4050	Oceania	7300 - 7600
Change	-75 -25	Change	-225 -100	Change	-775
S. America	3200 - 3900	S. America	4100 - 4800	BUTTERHOL	42000 - 10525
Change	N.C.	Change	-100	W. Europe	6500 - 6975
DRY WHEY		CHEESEBAR CHEESE		Change	N.C.
W. Europe	9275 - 10400	Change	-4025 -150		
Change	225 -25				



Commodity Procurement

- **Approved Vendors**
- **Each dairy product has a Commodity Requirements Document (CRD) that outlines:**
 - Product standards
 - Production requirements (DBG or IMS Grade A approved facility)
 - Age and Temperature Requirements
 - Composition Requirements
 - Microbial Requirements
 - Physical (Flavor, odor, color)
- **Current revisions to the Pepper Jack Cheese... other products?**
- **CRD's are created for new products and updated to align with current commercial practice, market conditions, packaging changes, truckload configuration, etc.**

Dairy Program contact: Allison Reynolds
allison.reynolds@usda.gov

New Vendor



Current Vendors



Dairy CRD's



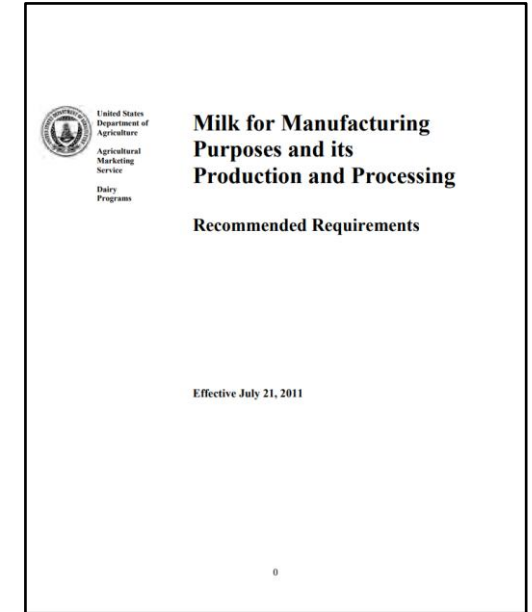
FY 2025 Commodity Procurement Dairy Product Purchases

<i>Product</i>	<i>Value (\$)</i>	<i>LB Purchased</i>
<i>Butter</i>	\$809,678.16	266,760
<i>Evaporated Milk</i>	\$183,653.11	185,895
<i>Fresh Fluid Milk</i>	\$11,742,660.35	27,794,799
<i>Instant Nonfat Dry Milk</i>	\$7,301,303.18	2,096,640
<i>Cheddar Cheese</i>	\$113,844,048.86	54,823,080
<i>Mozzarella Cheese</i>	\$101,724,532.91	51,014,103
<i>Pepper Jack Cheese</i>	\$90,970.48	38,800
<i>Processed Cheese</i>	\$44,868,791.76	21,938,400
<i>Ultra-Heat Temperature Milk</i>	\$20,417,508.27	40,063,107
<i>Yogurt</i>	\$5,613,135.77	3,464,394
Totals	\$306,596,282.85	201,685,977.38

Milk for Manufacturing Purposes

- Published in 1963 to promote uniformity
- Referenced when discussing overall U.S. dairy regulatory system
 - Last modified in 2011
 - Public health and animal health items for review
- **Special** thanks to the NADRO Committee!

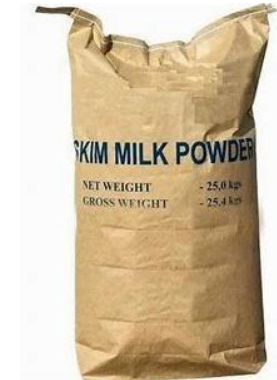
Karie Williams (PA) Lead	Amanda Johnson (MN)
Lynn Godfrey (ID)	Audra Phillips (AL)
David Hakes (Industry – DFA)	Allison Reynolds (USDA)
Sean Hejjja (VA)	Tyson Villarreal (WI)



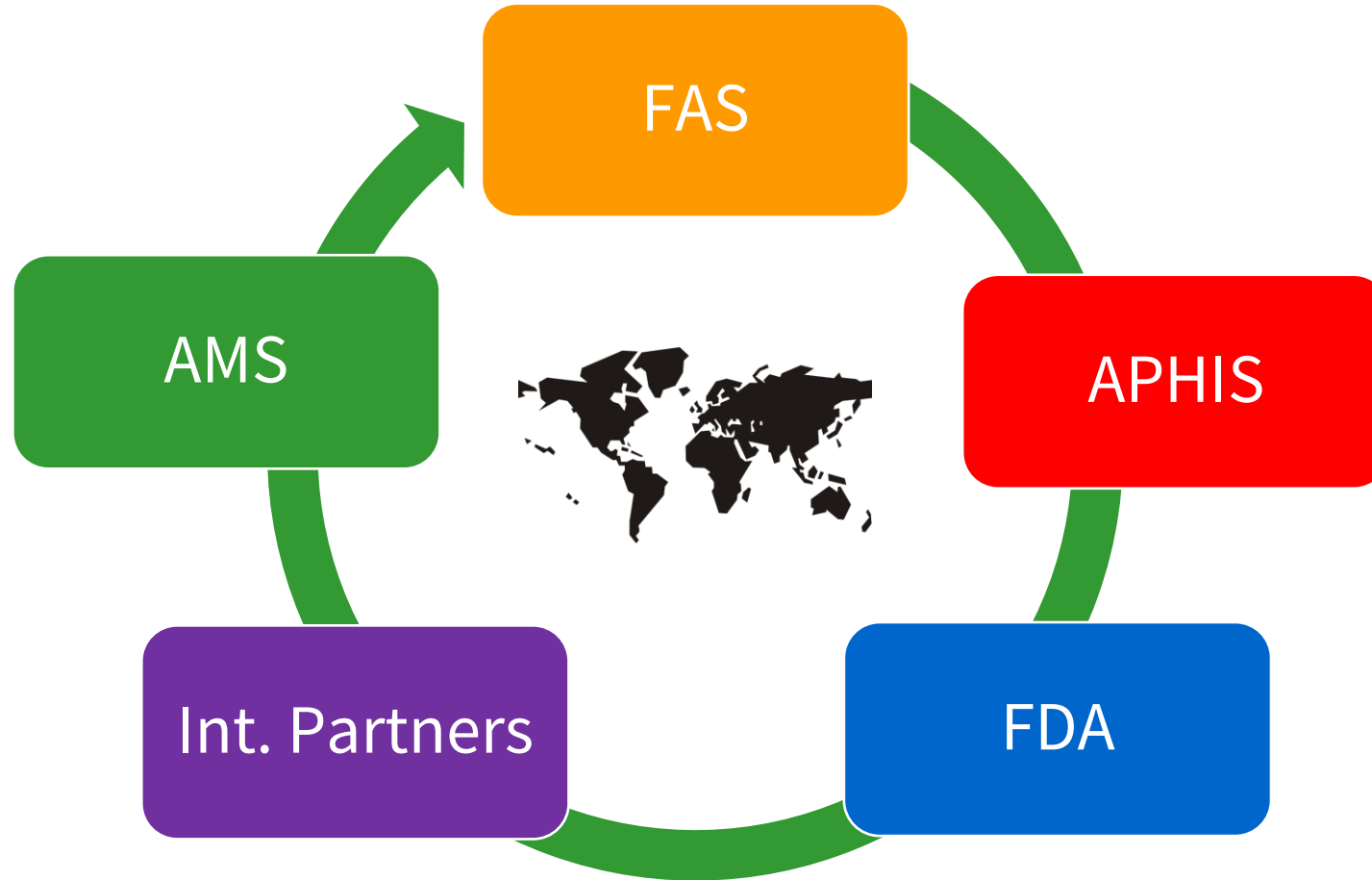


Dairy Grading Branch

- Salmonella sampling program
 - FDA and USDA MOU 225-75-4002 Exchange of Information and Coordination of Activities
- Butterfat test record reviews
- Remote butter grading pilot
- Plant Survey Manual Update



Dairy Program contact: National Field Office
dairynfo@usda.gov



Dairy Exports in 2024

Export value: \$~8.2 billion



Country	Value \$ 1,000 USD
Mexico	2,469
Canada	1,176
China	584
Japan	395
Korea, South	385
Philippines	364
Indonesia	247
Australia	173
Dominican Republic	135
Colombia	129



Tips and Best Practices

Attention to detail:

- Date of Departure – EU/GB, Vietnam, Korea (egg), Morocco, Turkey certificate must be dated on or before departure



Facility Numbers



Weights

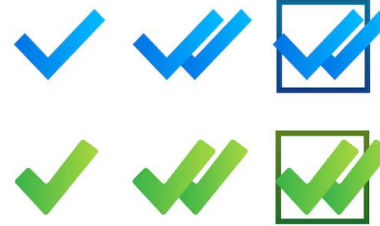


Managing your plant registration



Package labeling match facility numbers on certificate – EU/GB have “registration marks”

DOUBLE CHECK



Know before you go!



Lot numbers



Container/Seal Numbers



Making addresses on labels and certificates match with registration information



Check Country Labeling Requirements (FAS Reports)

Facilities Must Be on Appropriate List(s)

FDA Administered Specific Lists for Dairy Exports:

- [Chile](#)
- [China](#)
- [European Union](#)
- [United Kingdom](#)

Reminder: Must Be



Other Lists:

- Interstate Milk Shippers (IMS) list
- Dairy Plants Approved and Surveyed for USDA Grading Service
- Unique country lists e.g. S. Korea, Brazil, etc.



2024 ~63,000 Certificates

>120+ Countries Accept “General Sanitary” Certificate

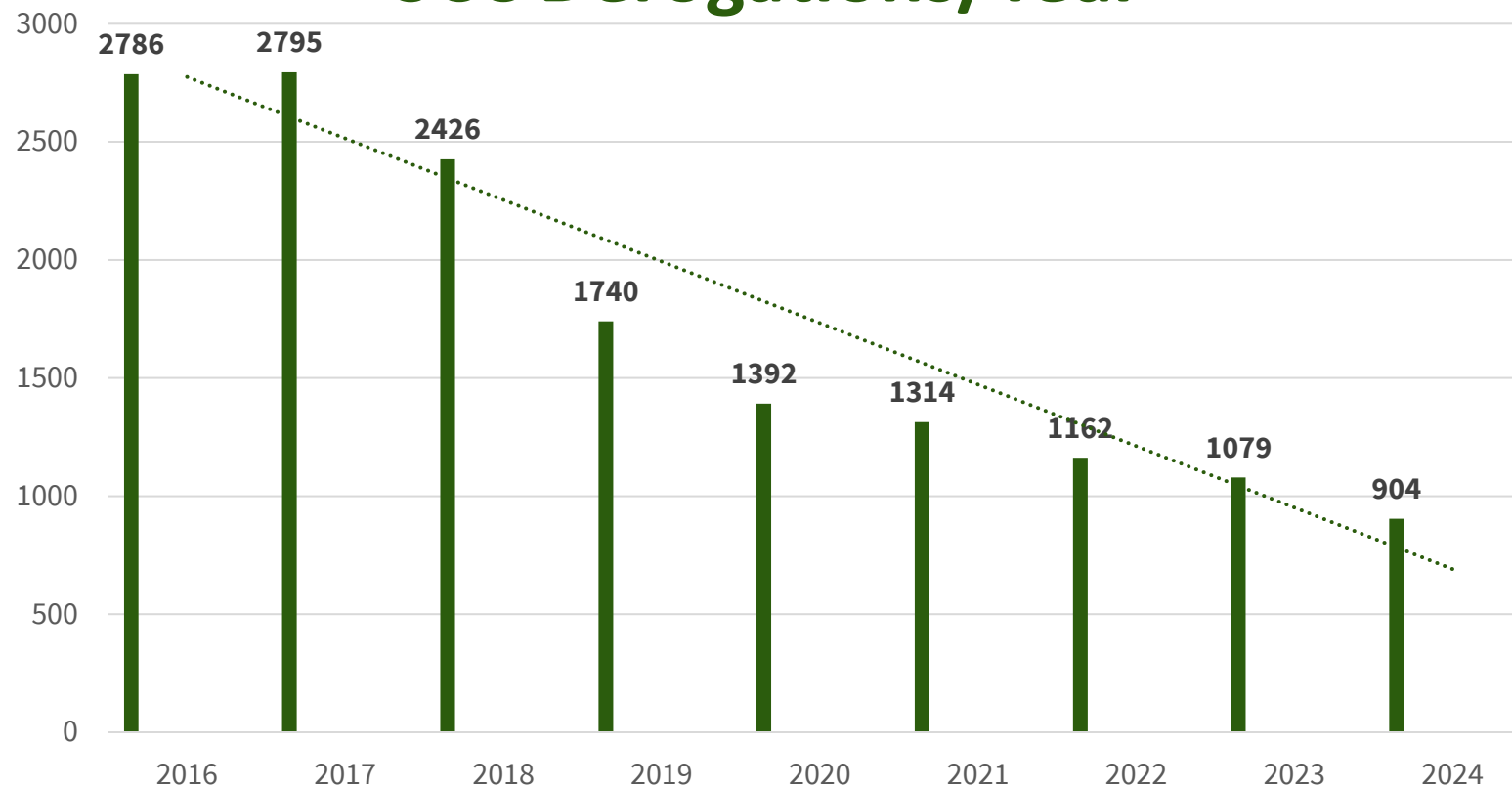
Importers with Unique Export Certificates

Algeria	Peru
Argentina	S. Korea
Brazil	Taiwan
Chile ¹	Tunisia
China ¹	Turkey ²
Cuba	United Kingdom ^{1,2}
European Union ^{1,2}	Uruguay
Morocco	

¹ Additional “listing” requirements

² Additional “market access” requirements

SCC Derogations/Year

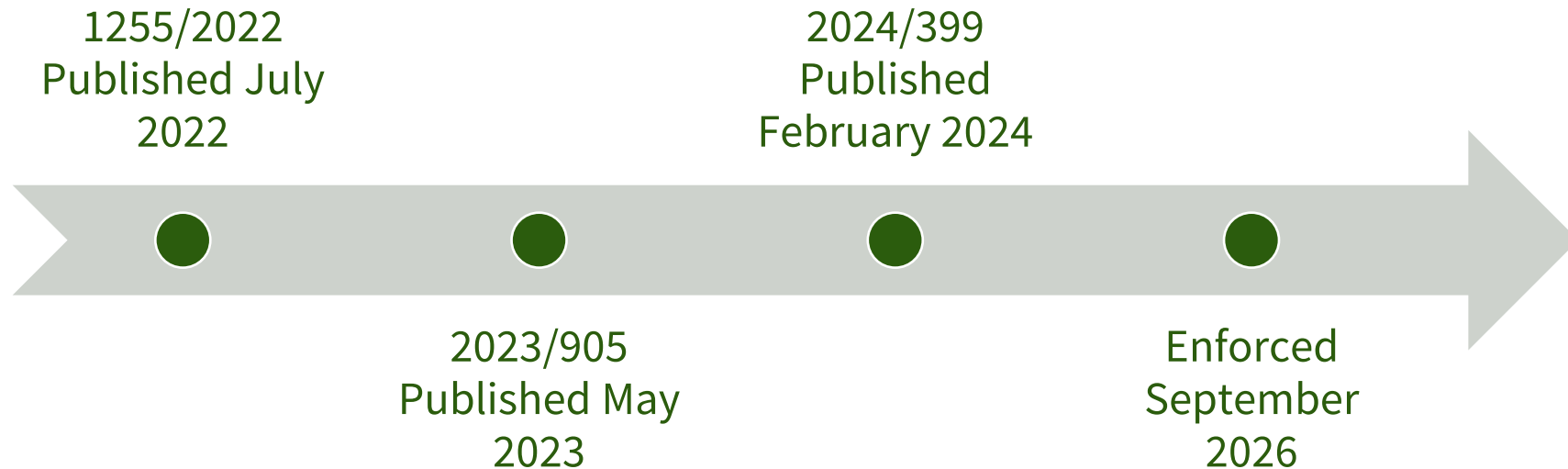


Questions: dairyauditservices@usda.gov



European Union (EU) Regulations Relating to Antimicrobial Resistance (AMR)

- Designates antimicrobials/groups of antimicrobials as critical for humans, prohibits use in animals
- Cannot be used in vet medicines in the EU, impacts imports of animal products



**AMS DAIRY PROGRAM
DAIRY GRADING BRANCH**

**European Union (EU) Export
Verification Program (EVP)
(EU-EVP)**

Eligibility for USDA AMS Dairy Export Certificates
to the EU

Dairy Grading and Standardization Division

Current Version
TBD

Previous Versions
01/05/2021
07/01/2022
10/25/2023
03/26/2024

European Union Export Verification Program

Applicable to EU and EU aligned countries, Great Britain and Turkey

Exporters and their product suppliers must participate in the AMS Dairy Program Dairy Grading Branch EU Export Verification Program





Costa Rica



Brazil



United Kingdom



Ecuador



Saudi Arabia



Indonesia



U.S. Technical Advisory Group (TAG) to ISO Technical Committee 34 / Subcommittee 5 (TC34/SC5) – Milk and Milk Products

- Key activities of the TAG
 - Actively participate in the development of internationally harmonized analytical standards that are ultimately endorsed by Codex as the “correct” method.
 - Be aware and comment on ISO-IDF analytical standards in helping to establish the U.S. consensus position at various stages of development
 - Contribute to ISO-IDF meetings for ISO TC34/SC5
 - Identify opportunities for new standards, including harmonizing existing standards



U.S. POSITION





Who should get involved?

- Subject matter experts in the product marketing and trade
- Subject matter experts in the analytical analysis
- Experts from dairy product companies, professional associations, government agencies, academia and testing laboratories (quality assurance)
- Experts have a direct impact on standard development and content



Dairy Program contact: Wendy Warren
Wendy.warren@usda.gov



Agricultural Marketing Service
U.S. DEPARTMENT OF AGRICULTURE

Thank you!

Chris Thompson
International Standards Director
USDA/AMS/Dairy Program
1400 Independence Ave. , SW
Washington, DC 20250

Phone: 202.720.9382

Email: Christopher.D.Thompson@usda.gov

