

# Timber Towers





# Timber Towers



## Single Deck Unit 1

Product Dimensions  
3411mm (L) 1018mm (W) 1845mm (H)

Minimum Surface Area: 23.52m<sup>2</sup>  
6878mm (L) 4018mm (W)

Free Fall Height: 900mm



## Single Deck Unit 3

Product Dimensions  
3620mm (L) 2147mm (W) 3201mm (H)

Minimum Surface Area: 26.44m<sup>2</sup>  
7073mm (L) 5140mm (W)

Free Fall Height: 1200mm

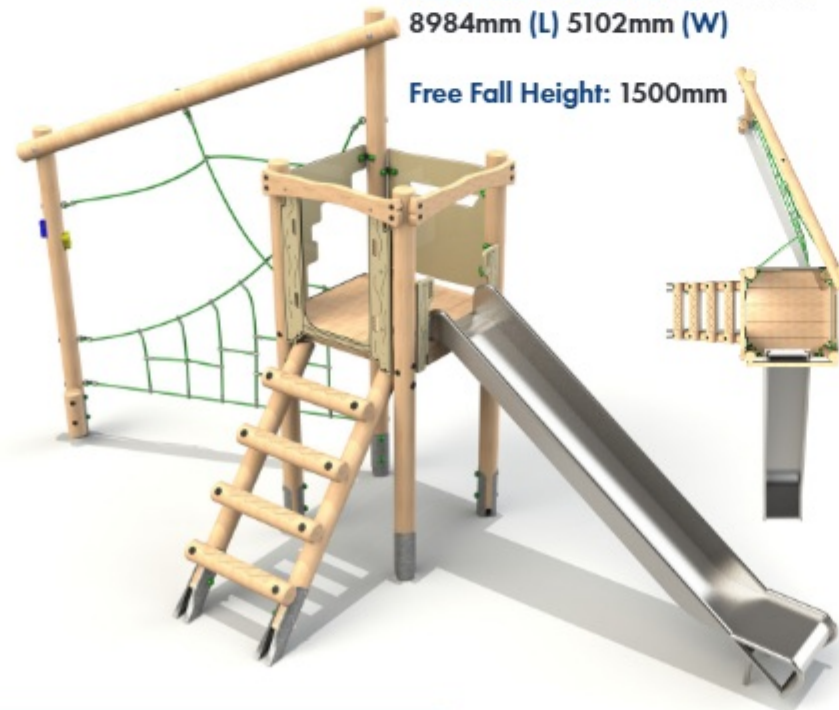


## Single Deck Unit 2

Product Dimensions  
4145mm (L) 1082mm (W) 3147mm (H)

Minimum Surface Area: 25.61m<sup>2</sup>  
7614mm (L) 4018mm (W)

Free Fall Height: 1200mm



## Single Deck Unit 4

Product Dimensions  
5550mm (L) 2094mm (W) 2970mm (H)

Minimum Surface Area: 32.97m<sup>2</sup>  
8984mm (L) 5102mm (W)

Free Fall Height: 1500mm

# Timber Towers

## Double Deck Unit 1

Product Dimensions  
5837mm (L) 2717mm (W) 2320mm (H)

Minimum Surface Area: 37.48m<sup>2</sup>  
9289mm (L) 5706mm (W)

Free Fall Height: 1327mm

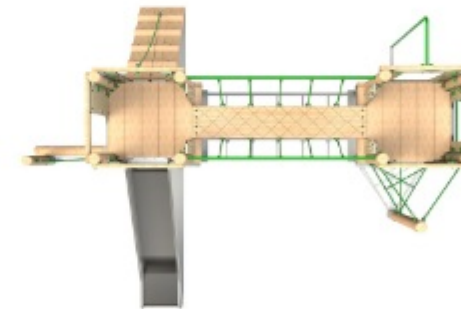


## Double Deck Unit 2

Product Dimensions  
5744mm (L) 4145mm (W) 2310mm (H)

Minimum Surface Area: 45.82m<sup>2</sup>  
8734mm (L) 7614mm (W)

Free Fall Height: 1200mm



## Double Deck Unit 3

Product Dimensions  
6613mm (L) 1669mm (W) 3149mm (H)

Minimum Surface Area: 39.05m<sup>2</sup>  
10082mm (L) 4607mm (W)

Free Fall Height: 1200mm



Bespoke Towers available, enquire for more information.

Steel feet as standard, bespoke rope colours available.



# Timber Towers

## Double Deck Unit 4

Product Dimensions  
7507mm (L) 1835mm (W) 3501mm (H)

Minimum Surface Area: 40.61m<sup>2</sup>  
10976mm (L) 4791mm (W)

Free Fall Height: 1500mm



## Double Deck Unit 5

Product Dimensions  
5124mm (L) 4183mm (W) 2945mm (H)

Minimum Surface Area: 50.04m<sup>2</sup>  
8592mm (L) 7236mm (W)

Free Fall Height: 1800mm



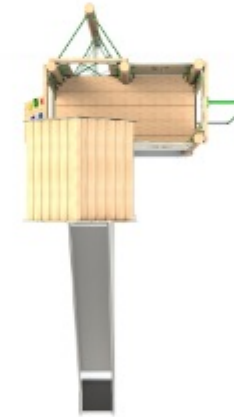
Bespoke Towers available, enquire for more information.

## Alt Double Deck Unit 1

Product Dimensions  
4678mm (L) 3090mm (W) 3149mm (H)

Minimum Surface Area: 34.61m<sup>2</sup>  
8136mm (L) 6143mm (W)

Free Fall Height: 1200mm



Steel feet as standard, bespoke rope colours available.

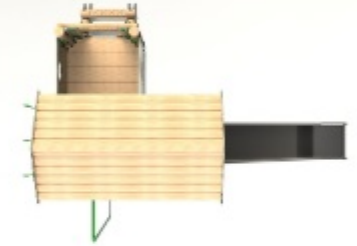
# Timber Towers

## Alt Double Deck Unit 2

Product Dimensions  
5711mm (L) 3099mm (W) 3799mm (H)

Minimum Surface Area: 36.67m<sup>2</sup>  
9173mm (L) 6082mm (W)

Free Fall Height: 1800mm





# Timber Towers



## Alt Double Deck Unit 3

Product Dimensions  
6706mm (L) 2841mm (W) 2605mm (H)

Minimum Surface Area: 41.6m<sup>2</sup>  
10175mm (L) 5813mm (W)

Free Fall Height: 1500mm



## Alt Double Deck Unit 4

Product Dimensions  
4233mm (L) 3880mm (W) 3699mm (H)

Minimum Surface Area: 35.57m<sup>2</sup>  
7363mm (L) 7216mm (W)

Free Fall Height: 1500mm



Bespoke Towers available, enquire for more information.

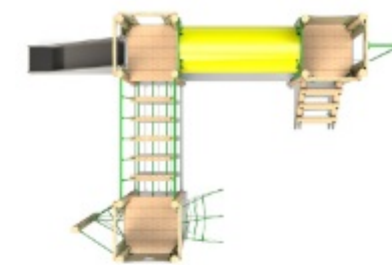
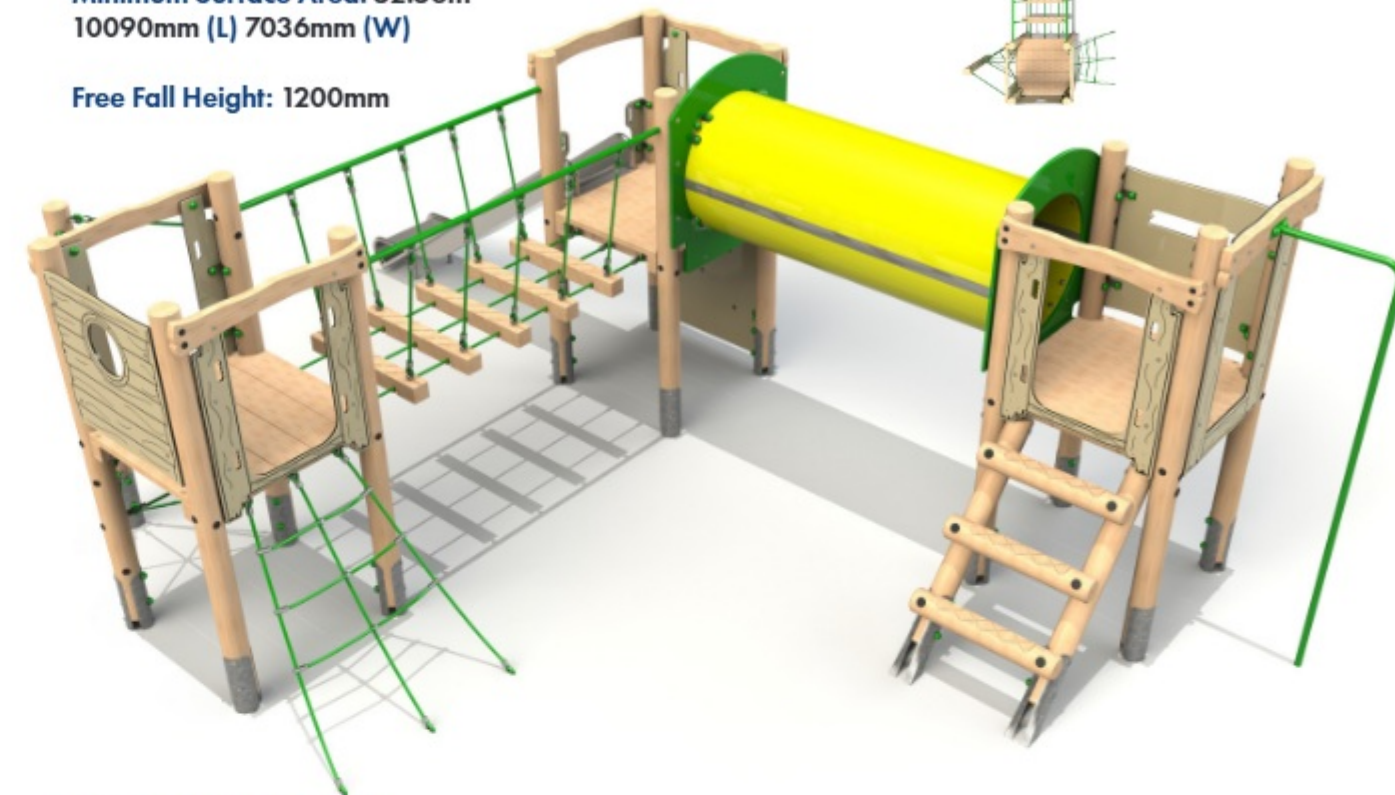
# Timber Towers

## Triple Deck Unit 1

Product Dimensions  
6638mm (L) 4081mm (W) 2310mm (H)

Minimum Surface Area: 52.58m<sup>2</sup>  
10090mm (L) 7036mm (W)

Free Fall Height: 1200mm

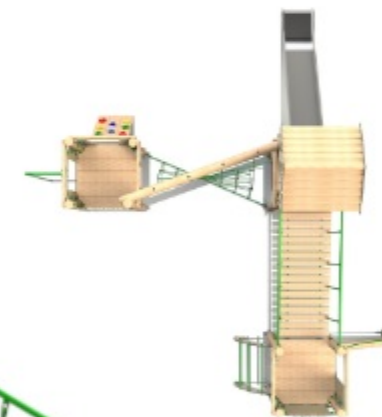


## Triple Deck Unit 2

Product Dimensions  
6377mm (L) 5803mm (W) 3699mm (H)

Minimum Surface Area: 53.78m<sup>2</sup>  
9846mm (L) 8786mm (W)

Free Fall Height: 1500mm



Steel feet as standard, bespoke rope colours available.



# Timber Towers

## Triple Deck Unit 3

Product Dimensions  
7099mm (L) 4489mm (W) 3399mm (H)

Minimum Surface Area: 56.78m<sup>2</sup>  
10054mm (L) 7958mm (W)

Free Fall Height: 1500mm



## Triple Deck Unit 4

Product Dimensions  
6982mm (L) 5059mm (W) 3449mm (H)

Minimum Surface Area: 54.83m<sup>2</sup>  
10435mm (L) 7992mm (W)

Free Fall Height: 1677mm



Bespoke Towers available, enquire for more information.

# Timber Towers

## Four Deck Unit 1

Product Dimensions  
6546mm (L) 4664mm (W) 3149mm (H)

Minimum Surface Area: 58.06m<sup>2</sup>  
9410mm (L) 7620mm (W)

Free Fall Height: 1200mm



## Four Deck Unit 2

Product Dimensions  
7508mm (L) 4630mm (W) 3501mm (H)

Minimum Surface Area: 69.74m<sup>2</sup>  
10977mm (L) 7576mm (W)

Free Fall Height: 1500mm

Steel feet as standard, bespoke rope colours available.



# Timber Towers

## Four Deck Unit 3

Product Dimensions  
8194mm (L) 5243mm (W) 3449mm (H)

Minimum Surface Area: 74.33m<sup>2</sup>  
11186mm (L) 8196mm (W)

Free Fall Height: 1500mm



## Four Deck Unit 4

Product Dimensions  
10371mm (L) 4131mm (W) 2970mm (H)

Minimum Surface Area: 62.32m<sup>2</sup>  
13360mm (L) 7600mm (W)

Free Fall Height: 1500mm



Bespoke Towers available, enquire for more information.

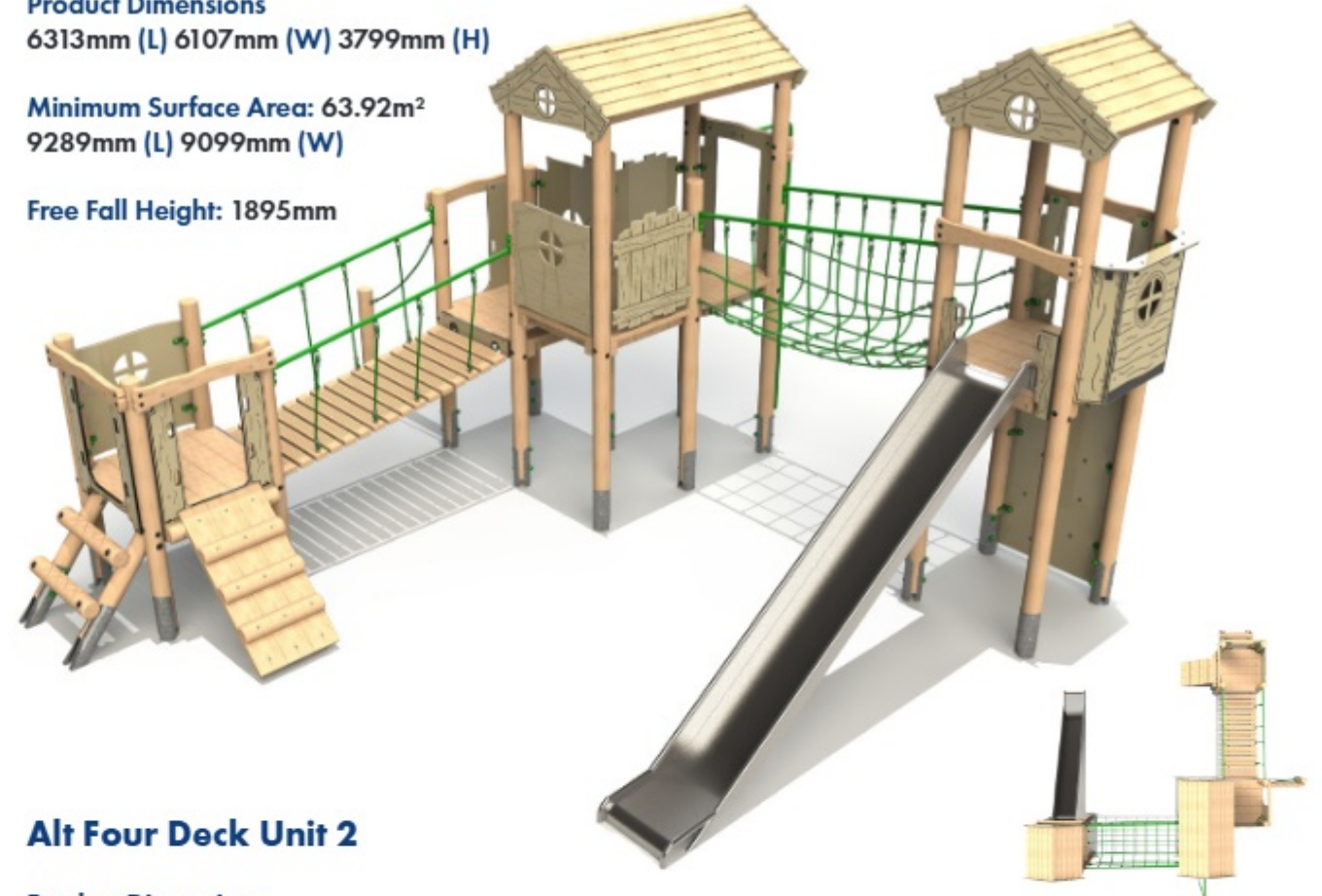
# Timber Towers

## Alt Four Deck Unit 1

Product Dimensions  
6313mm (L) 6107mm (W) 3799mm (H)

Minimum Surface Area: 63.92m<sup>2</sup>  
9289mm (L) 9099mm (W)

Free Fall Height: 1895mm

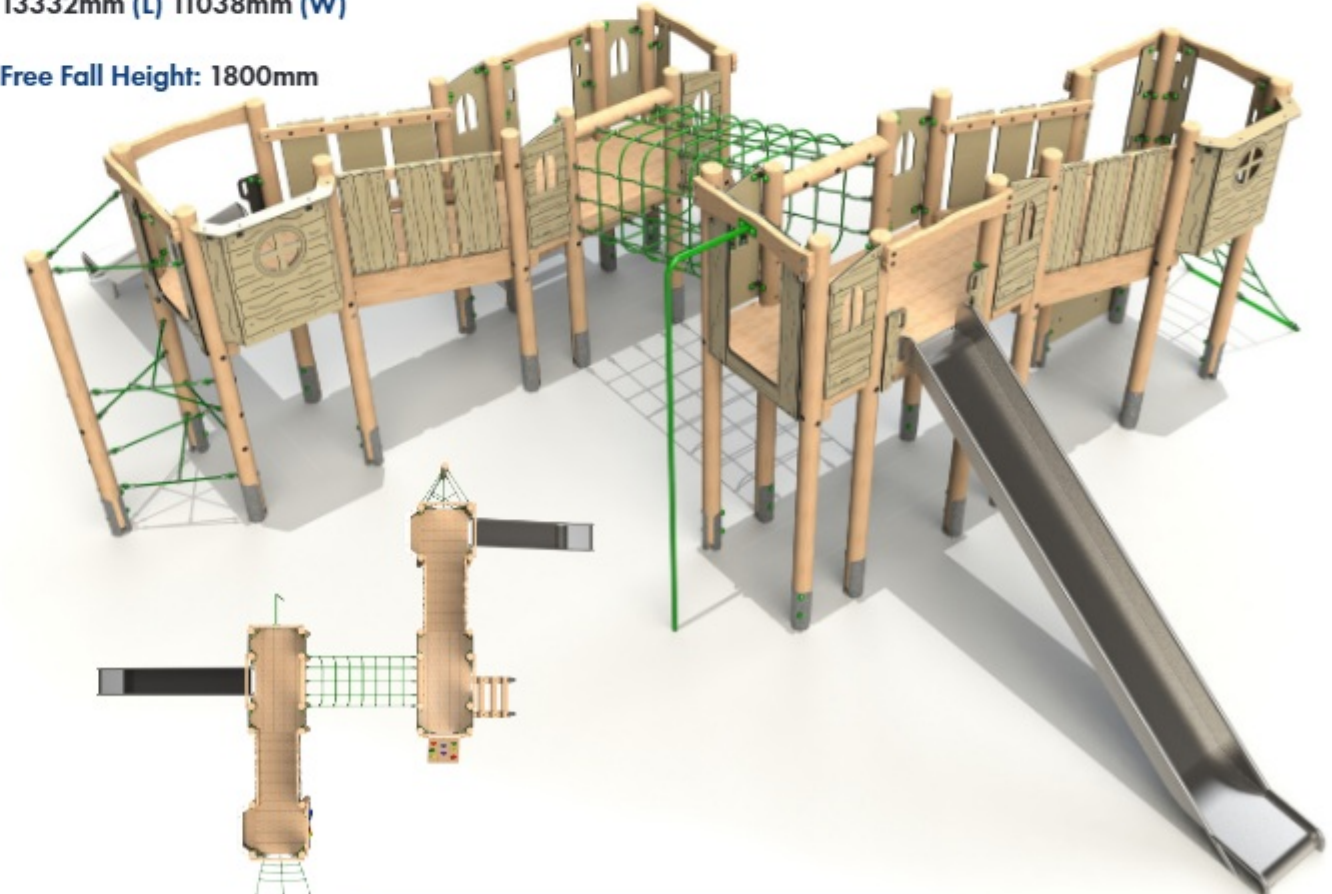


## Alt Four Deck Unit 2

Product Dimensions  
9403mm (L) 8049mm (W) 2905mm (H)

Minimum Surface Area: 79.2m<sup>2</sup>  
13332mm (L) 11038mm (W)

Free Fall Height: 1800mm



Steel feet as standard, bespoke rope colours available.



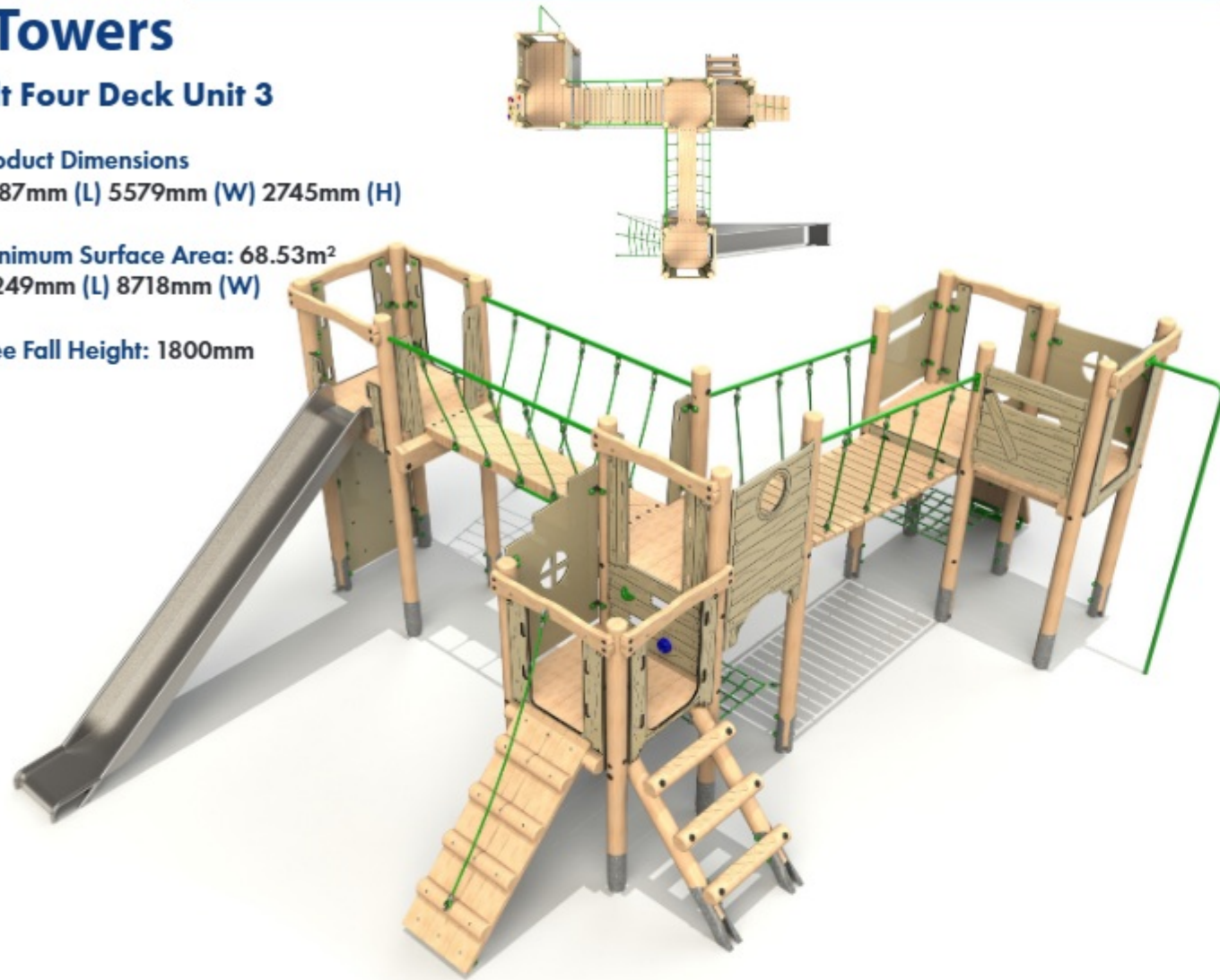
# Timber Towers

## Alt Four Deck Unit 3

Product Dimensions  
7787mm (L) 5579mm (W) 2745mm (H)

Minimum Surface Area: 68.53m<sup>2</sup>  
11249mm (L) 8718mm (W)

Free Fall Height: 1800mm

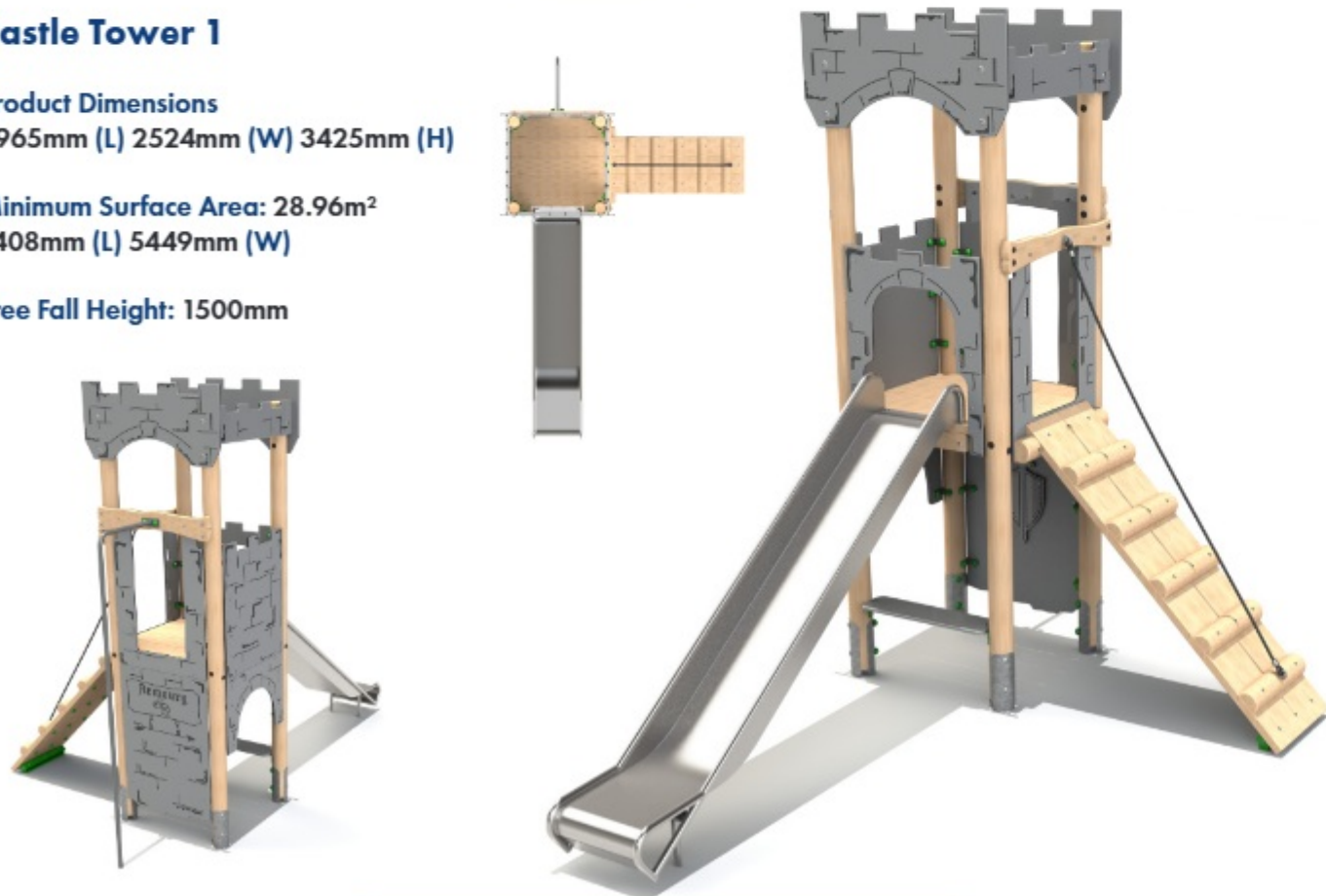


## Castle Tower 1

Product Dimensions  
3965mm (L) 2524mm (W) 3425mm (H)

Minimum Surface Area: 28.96m<sup>2</sup>  
7408mm (L) 5449mm (W)

Free Fall Height: 1500mm



Bespoke Towers available, enquire for more information.

## Castle Tower 2

Product Dimensions  
4696mm (L) 4145mm (W) 3191mm (H)

Minimum Surface Area: 40.33m<sup>2</sup>  
7614mm (L) 7554mm (W)

Free Fall Height: 1327mm

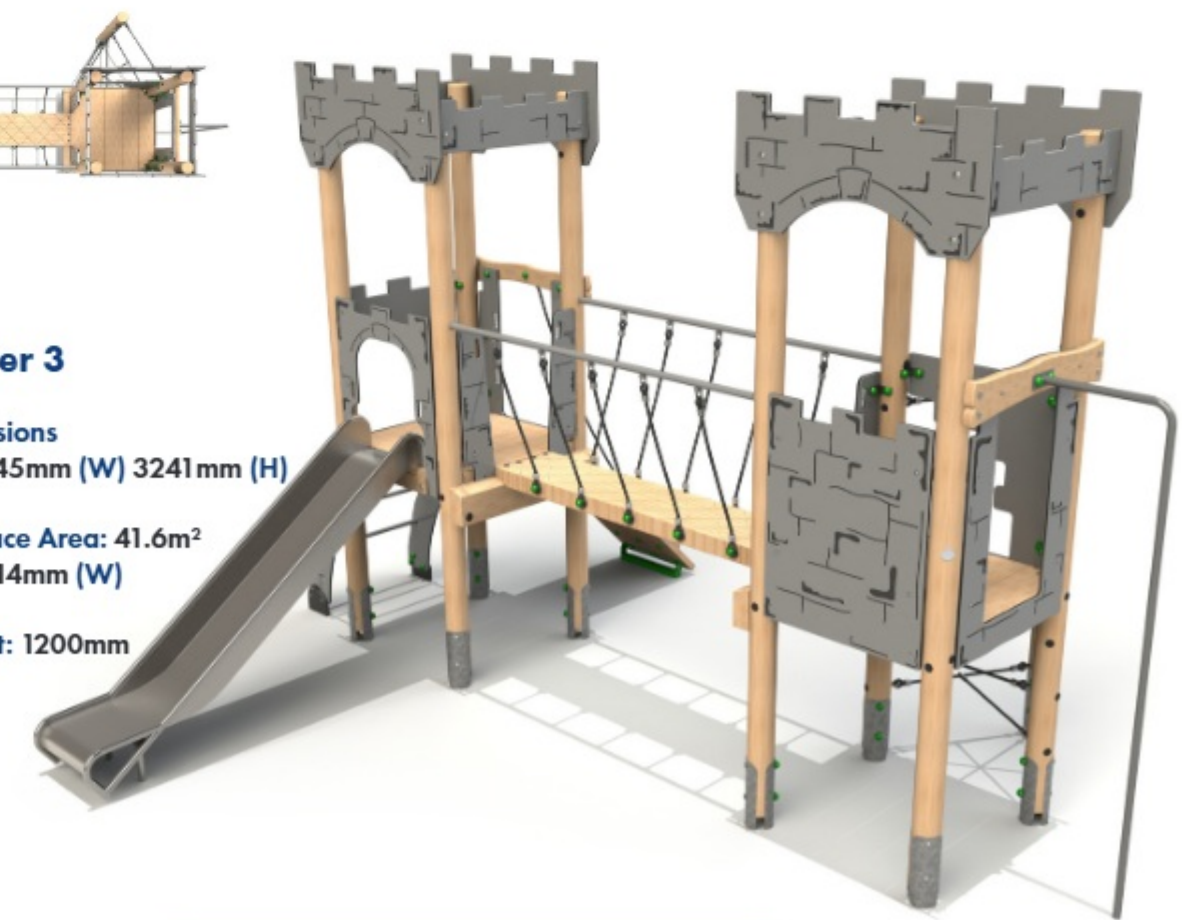


## Castle Tower 3

Product Dimensions  
5185mm (L) 4145mm (W) 3241mm (H)

Minimum Surface Area: 41.6m<sup>2</sup>  
8169mm (L) 7614mm (W)

Free Fall Height: 1200mm



Steel feet as standard, bespoke rope colours available.

# Timber Towers



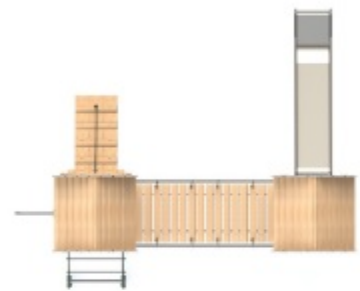
# Timber Towers

## Castle Tower 4

Product Dimensions  
4717mm (L) 3903mm (W) 3490mm (H)

Minimum Surface Area: 41.31m<sup>2</sup>  
7625mm (L) 7371mm (W)

Free Fall Height: 1500mm

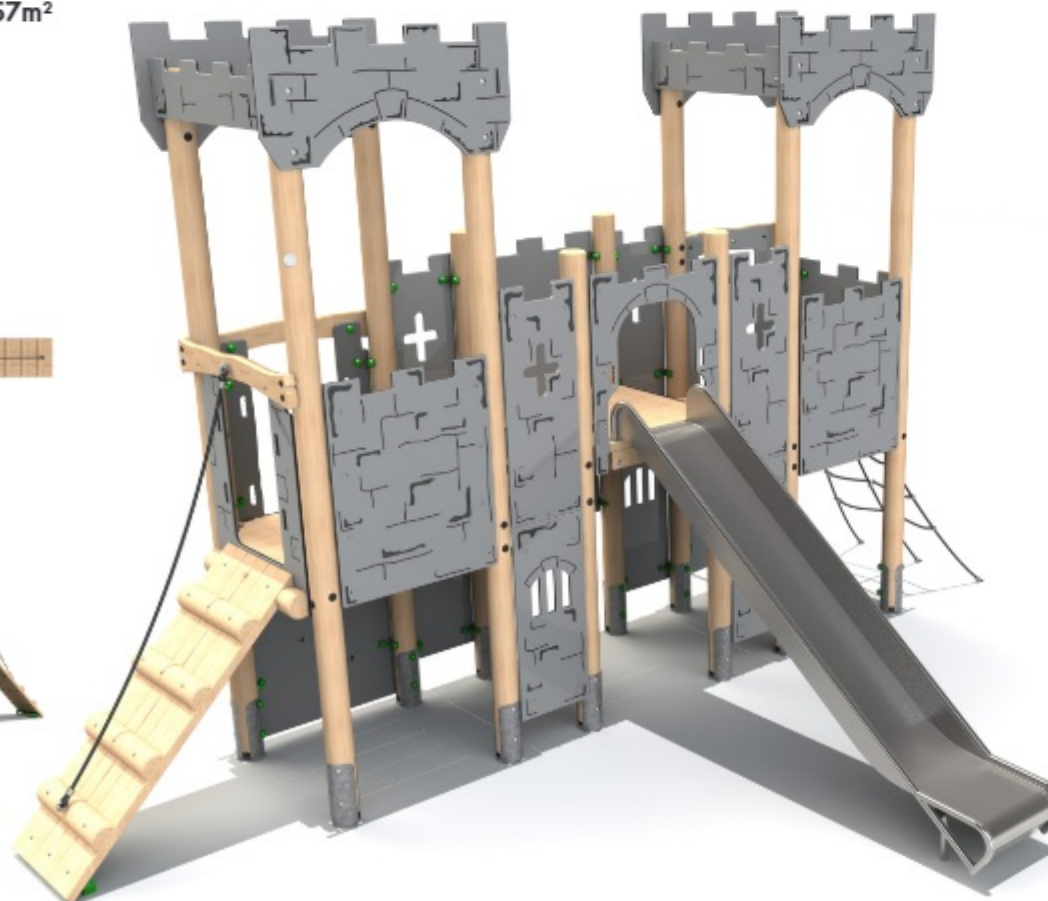
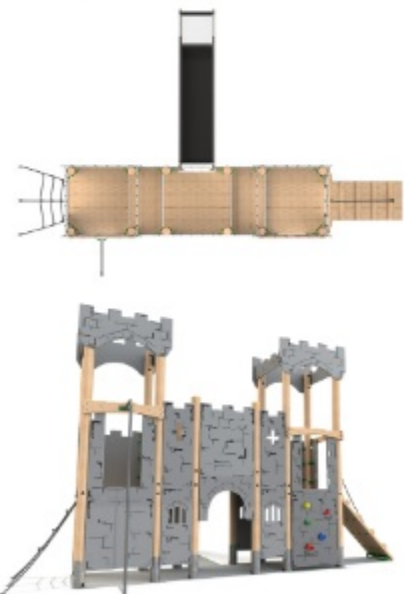


## Castle Tower 5

Product Dimensions  
5684mm (L) 3965mm (W) 3460mm (H)

Minimum Surface Area: 42.57m<sup>2</sup>  
8693mm (L) 7417mm (W)

Free Fall Height: 1500mm



Bespoke Towers available, enquire for more information.

# Timber Towers

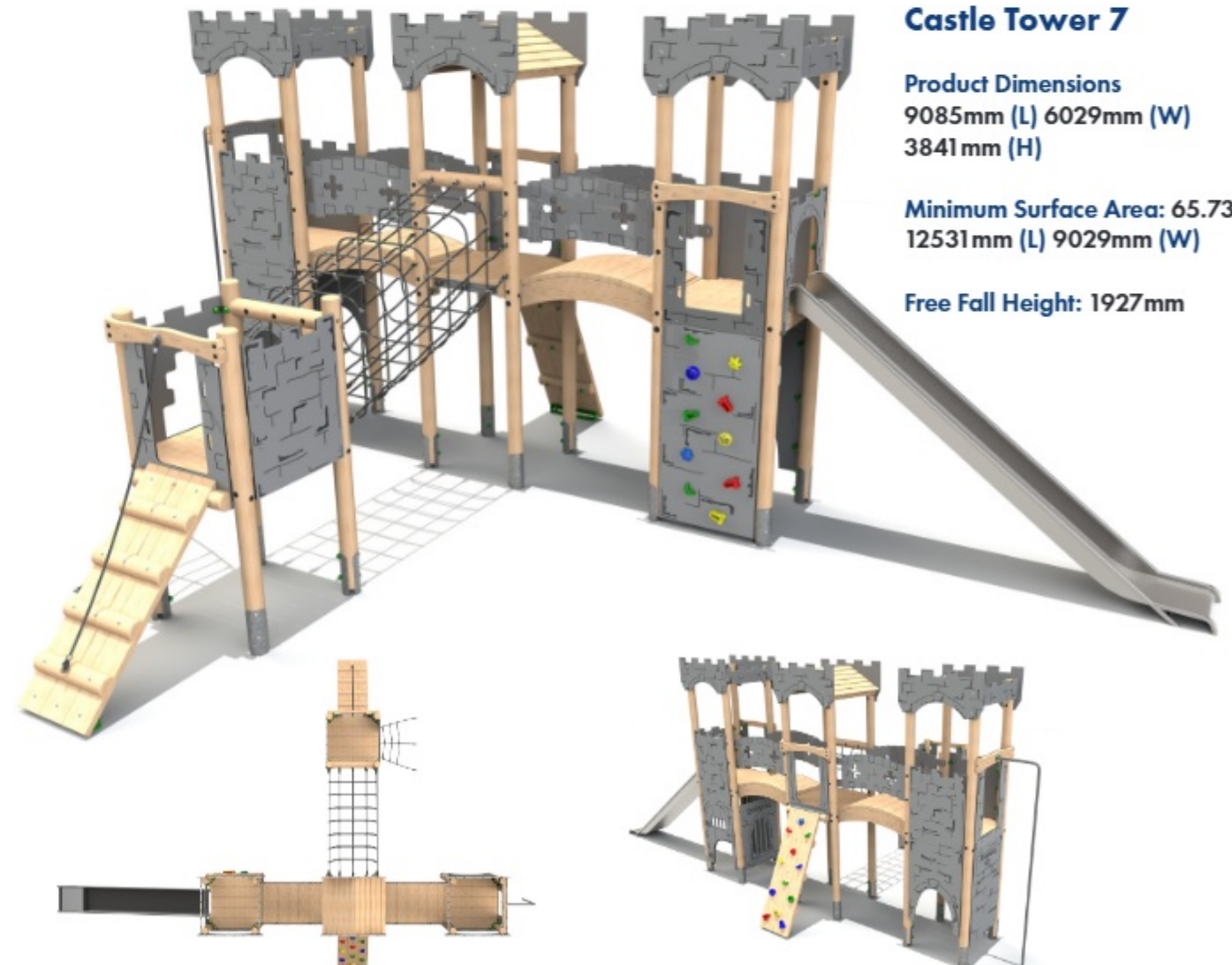


## Castle Tower 6

Product Dimensions  
5242mm (L) 4603mm (W)  
3491mm (H)

Minimum Surface Area: 51.32m<sup>2</sup>  
8167mm (L) 7611mm (W)

Free Fall Height: 1500mm



## Castle Tower 7

Product Dimensions  
9085mm (L) 6029mm (W)  
3841mm (H)

Minimum Surface Area: 65.73m<sup>2</sup>  
12531mm (L) 9029mm (W)

Free Fall Height: 1927mm

Steel feet as standard, bespoke rope colours available.



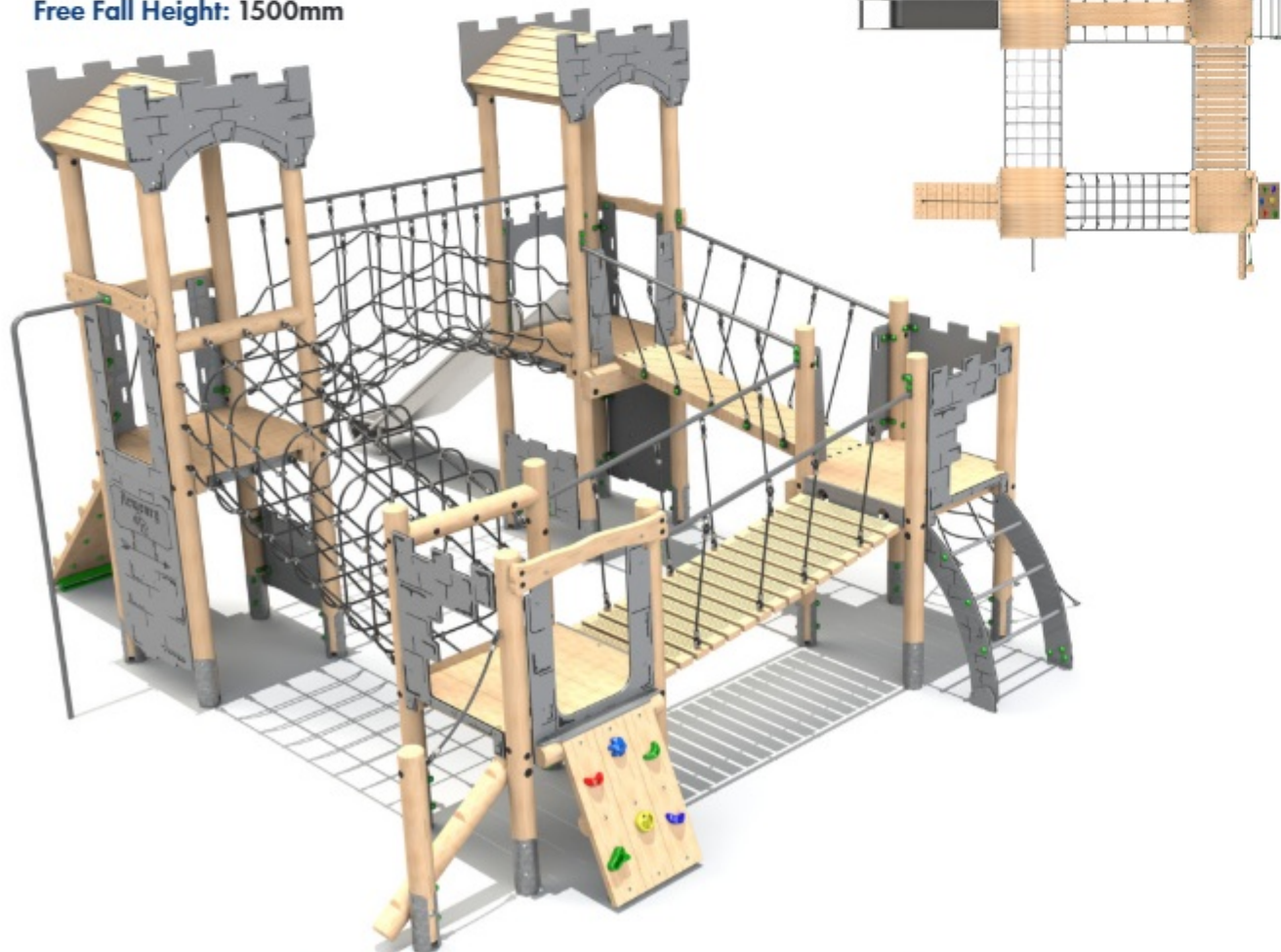


## Castle Tower 8

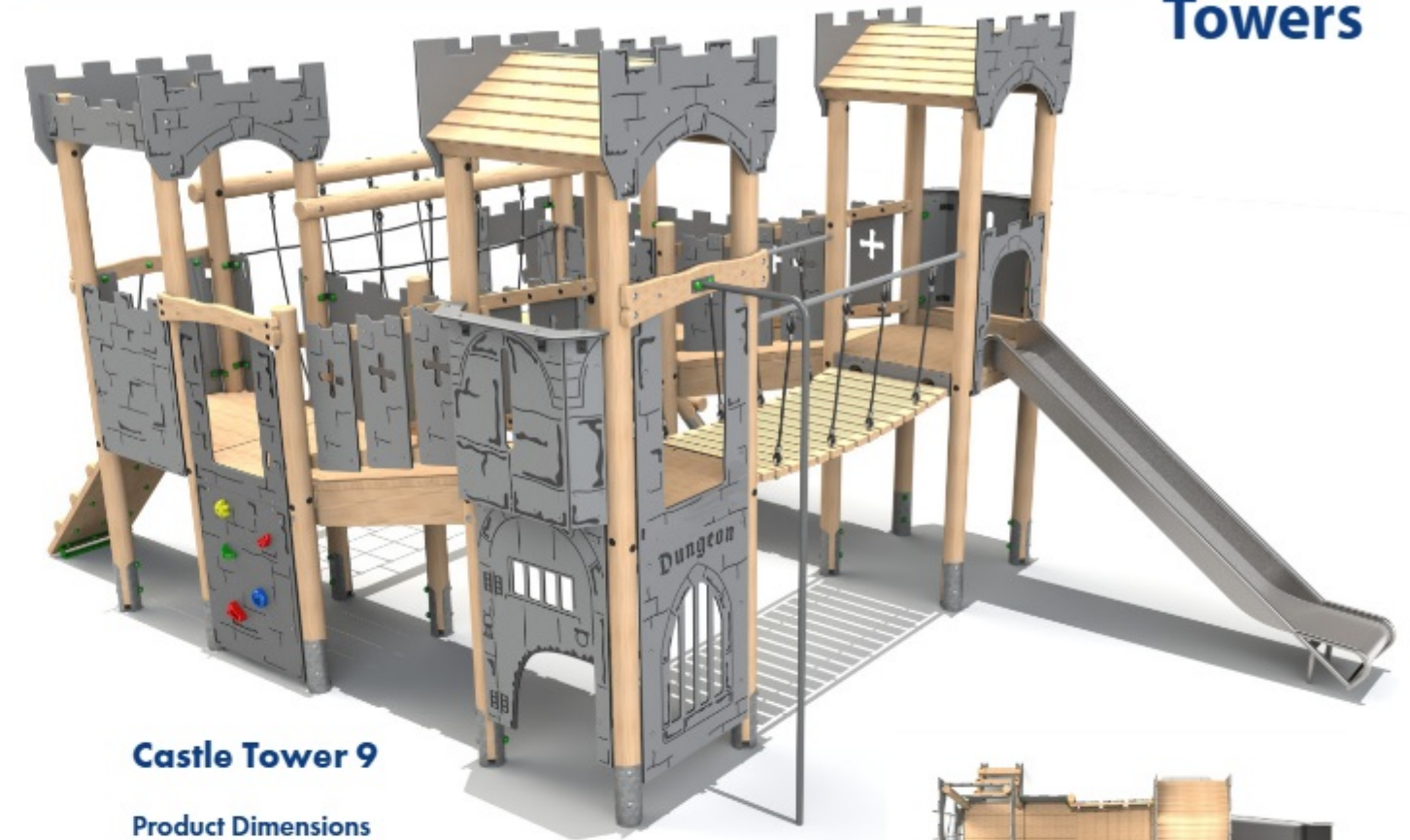
**Product Dimensions**  
6920mm (L) 5548mm (W) 3741mm (H)

**Minimum Surface Area:** 71.05m<sup>2</sup>  
10390mm (L) 8556mm (W)

**Free Fall Height:** 1500mm



Bespoke Towers available, enquire for more information.

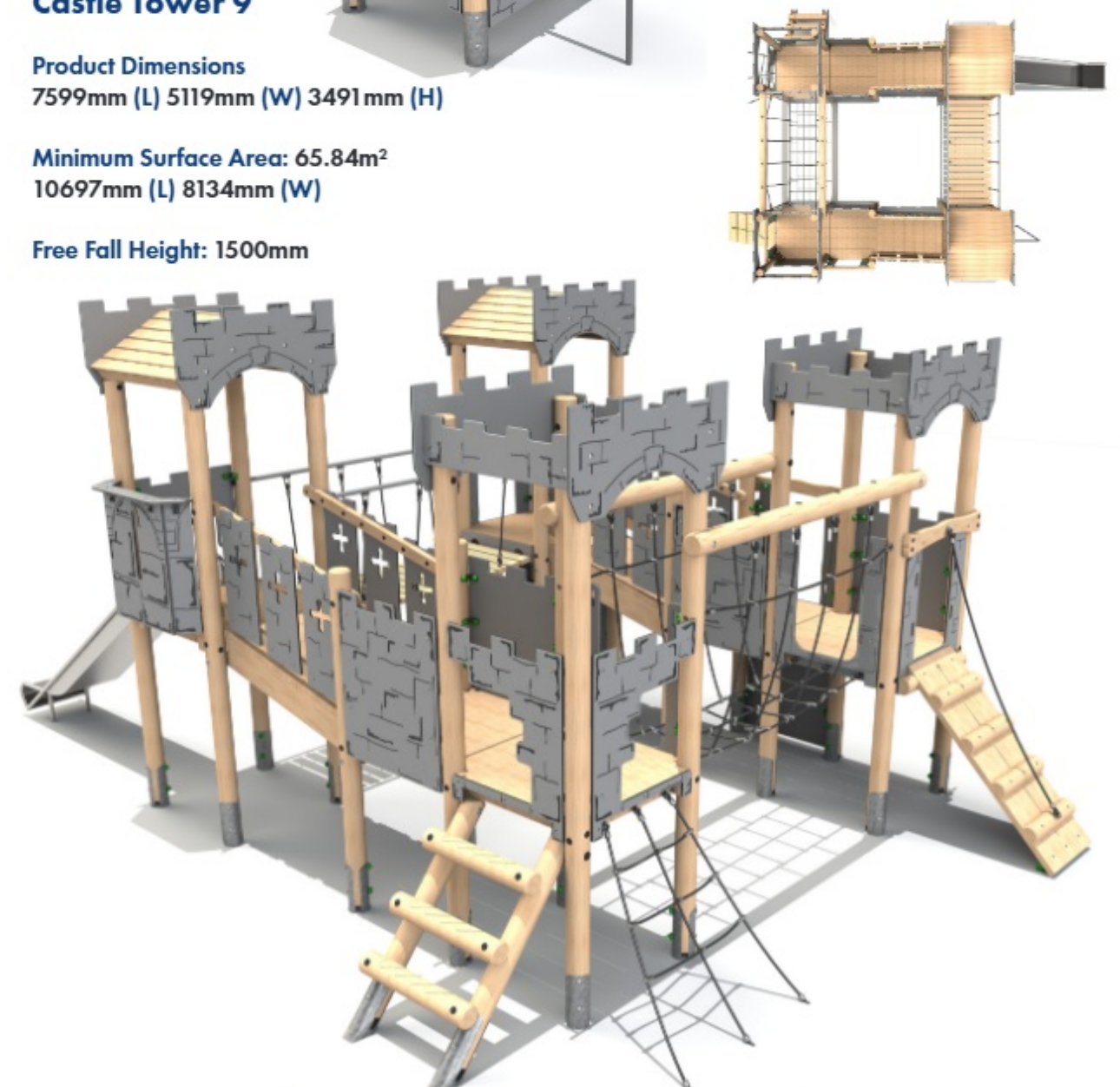


## Castle Tower 9

**Product Dimensions**  
7599mm (L) 5119mm (W) 3491mm (H)

**Minimum Surface Area:** 65.84m<sup>2</sup>  
10697mm (L) 8134mm (W)

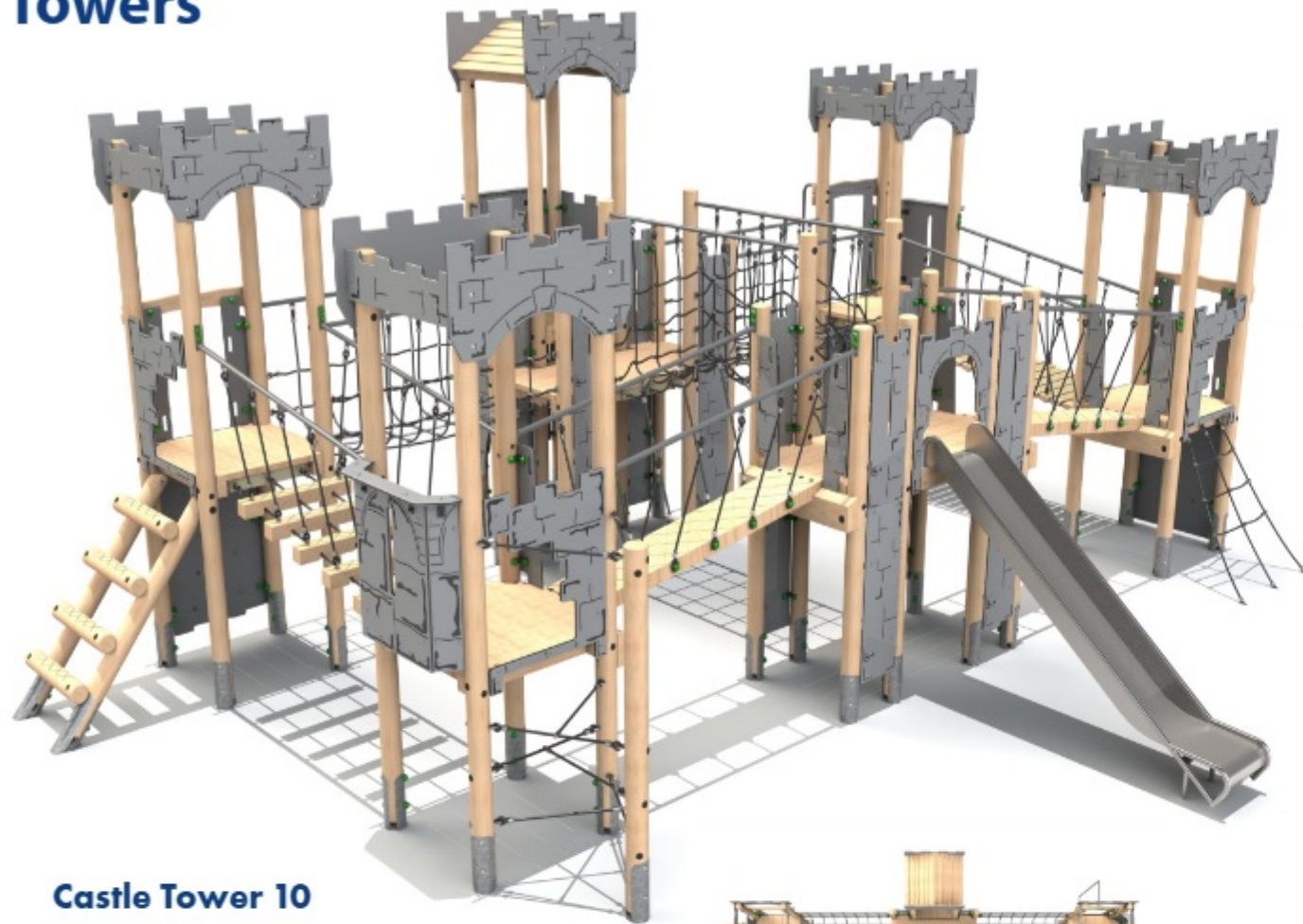
**Free Fall Height:** 1500mm



Steel feet as standard, bespoke rope colours available.



# Timber Towers

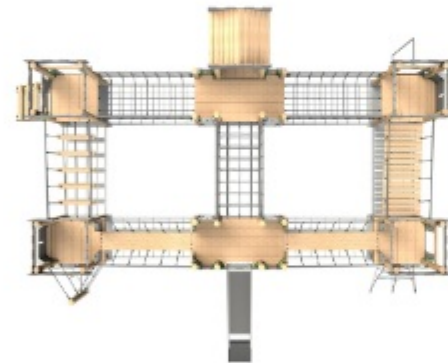


## Castle Tower 10

**Product Dimensions**  
9243mm (L) 7490mm (W) 4041mm (H)

**Minimum Surface Area:** 97.08m<sup>2</sup>  
12251mm (L) 10929mm (W)

**Free Fall Height:** 1895mm



Bespoke Towers available, enquire for more information.

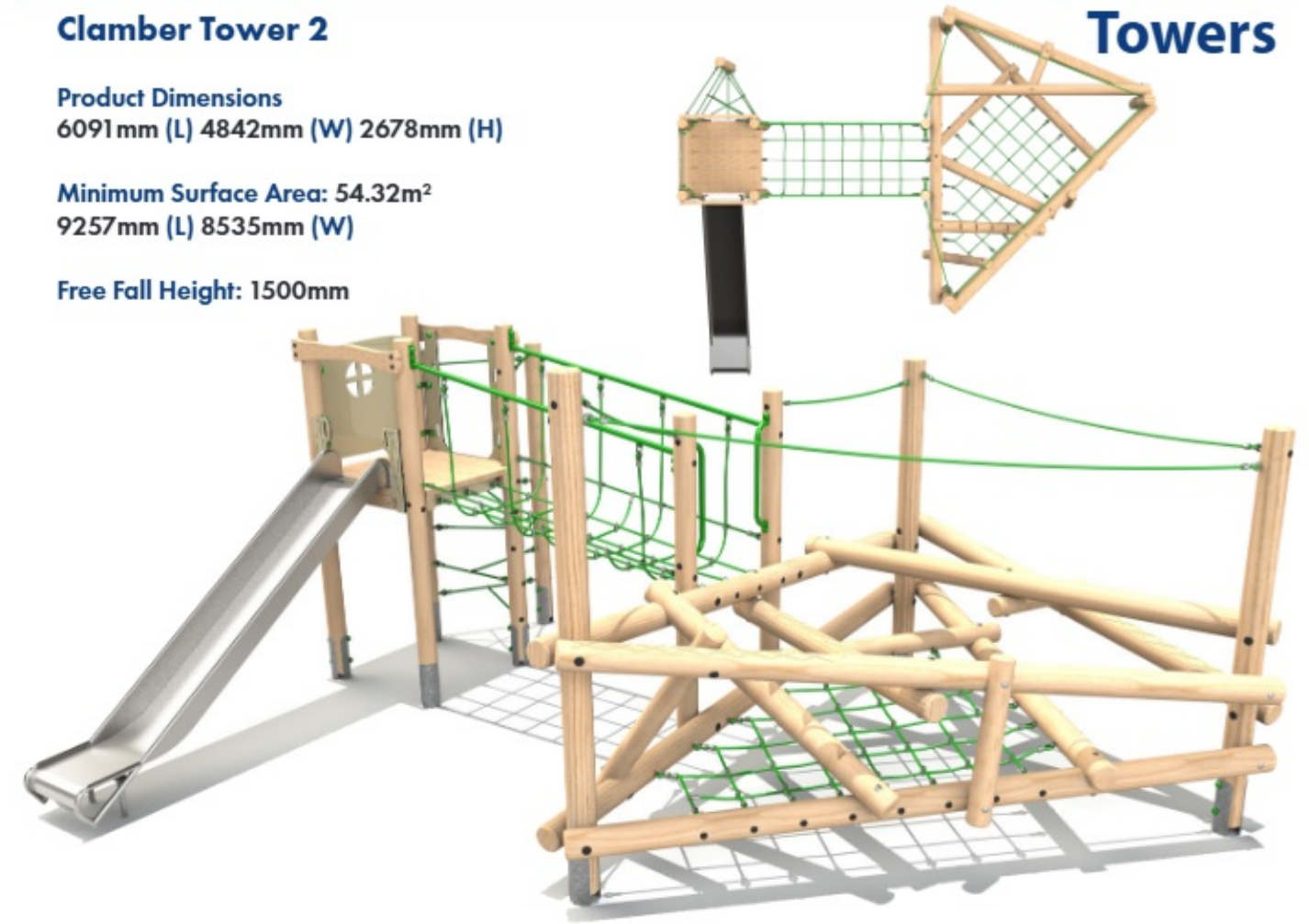
# Timber Towers

## Clamber Tower 2

**Product Dimensions**  
6091mm (L) 4842mm (W) 2678mm (H)

**Minimum Surface Area:** 54.32m<sup>2</sup>  
9257mm (L) 8535mm (W)

**Free Fall Height:** 1500mm

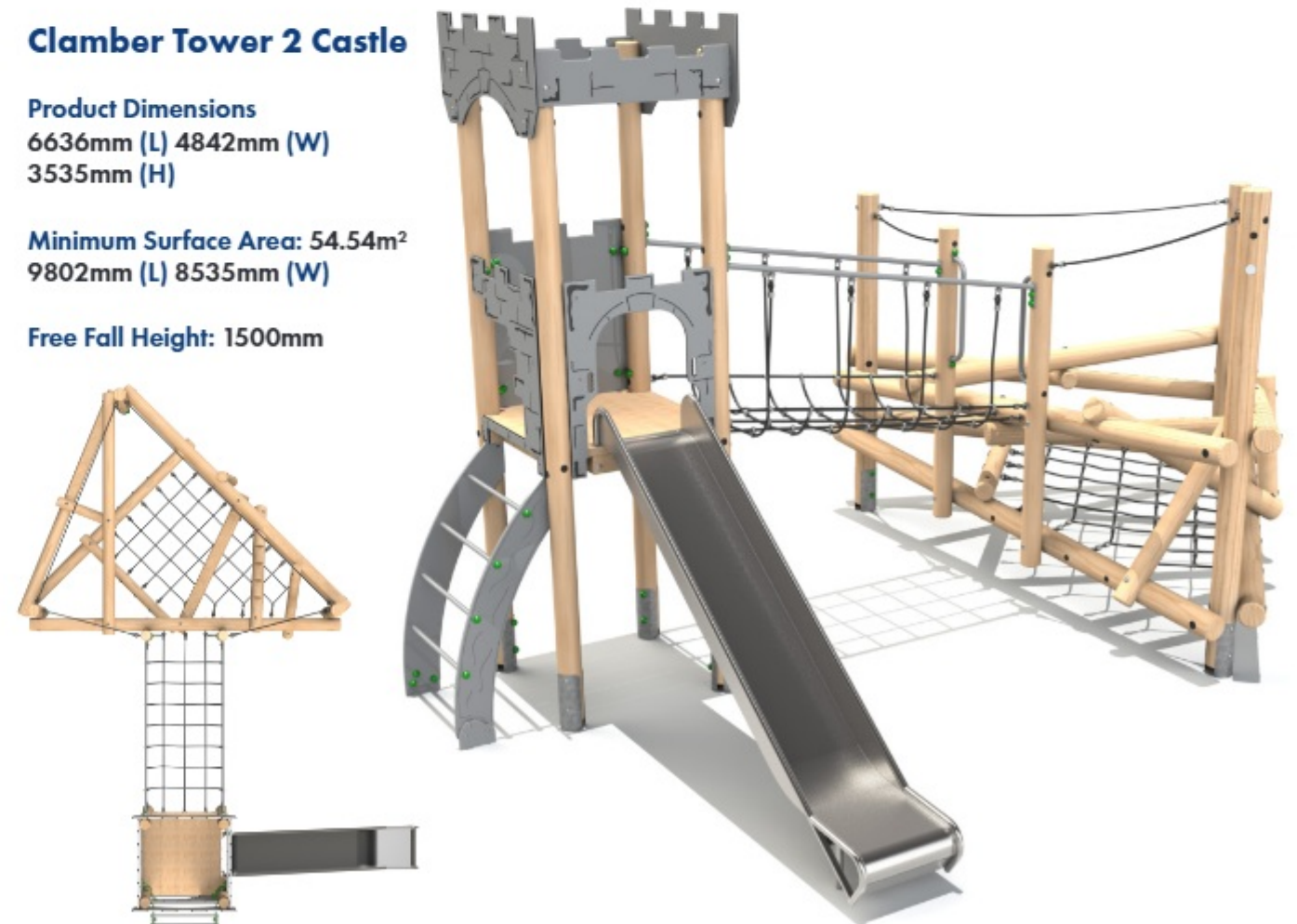


## Clamber Tower 2 Castle

**Product Dimensions**  
6636mm (L) 4842mm (W)  
3535mm (H)

**Minimum Surface Area:** 54.54m<sup>2</sup>  
9802mm (L) 8535mm (W)

**Free Fall Height:** 1500mm



Steel feet as standard, bespoke rope colours available.



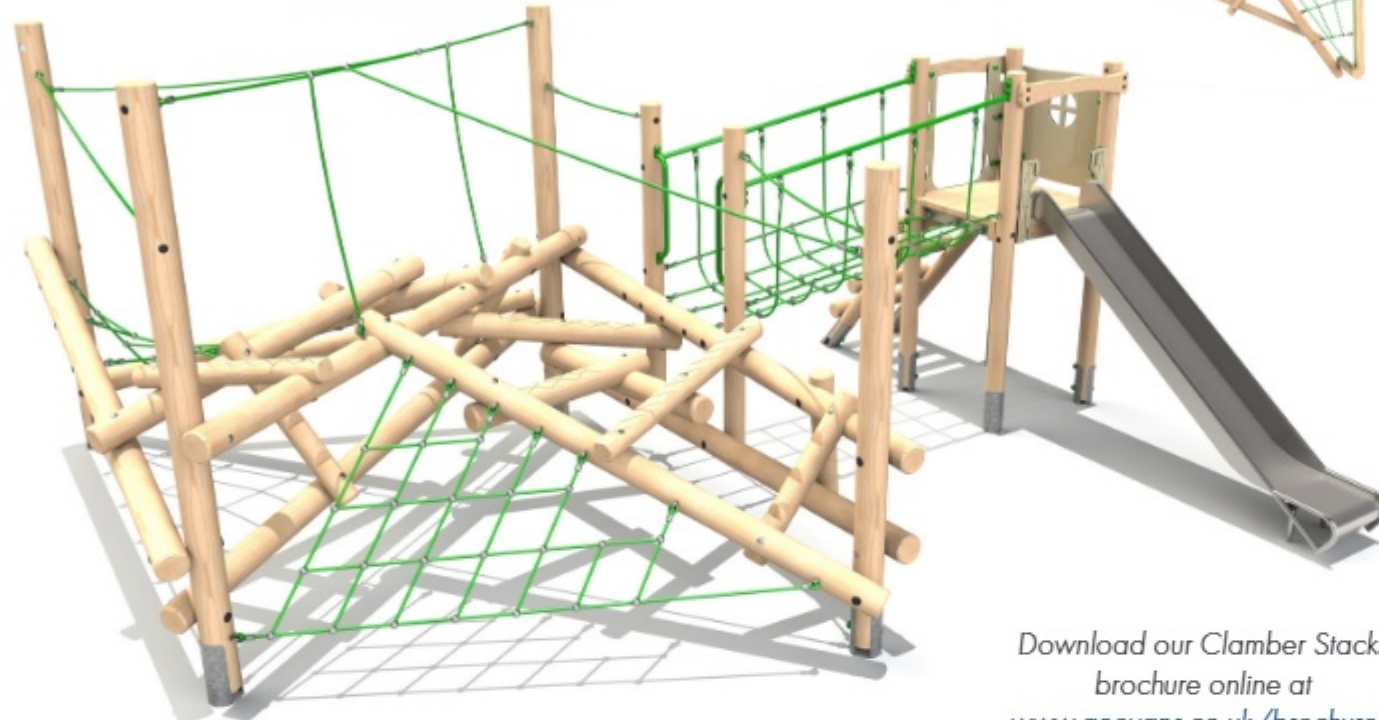
# Timber Towers

## Clamber Tower Mezzo

Product Dimensions  
6372mm (L) 5978mm (W) 2854mm (H)

Minimum Surface Area: 63.91m<sup>2</sup>  
9366mm (L) 9477mm (W)

Free Fall Height: 1500mm



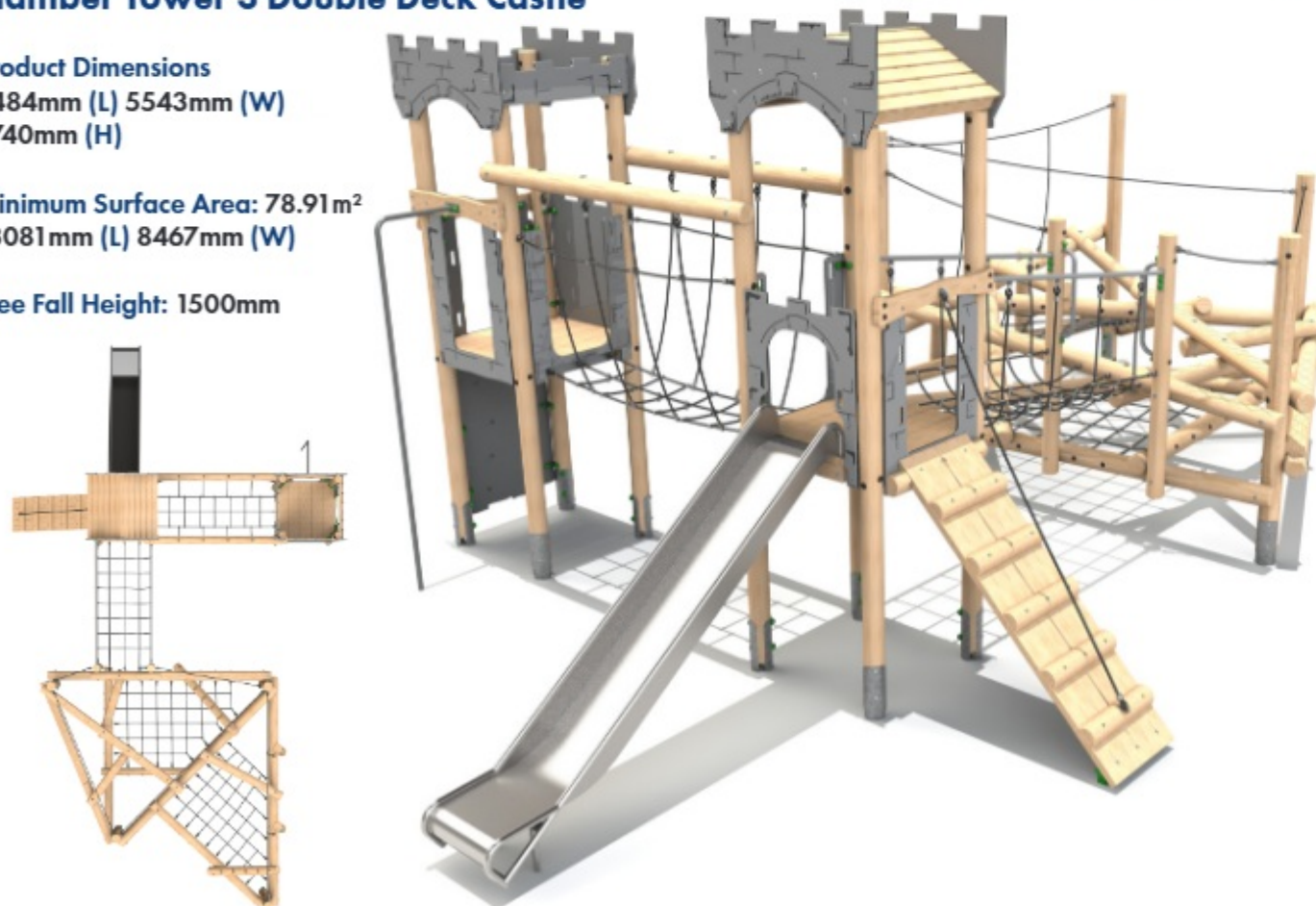
Download our Clamber Stacks  
brochure online at  
[www.aeevans.co.uk/brochures](http://www.aeevans.co.uk/brochures).

## Clamber Tower 3 Double Deck Castle

Product Dimensions  
9484mm (L) 5543mm (W)  
3740mm (H)

Minimum Surface Area: 78.91m<sup>2</sup>  
13081mm (L) 8467mm (W)

Free Fall Height: 1500mm



Bespoke Towers available, enquire for more information.

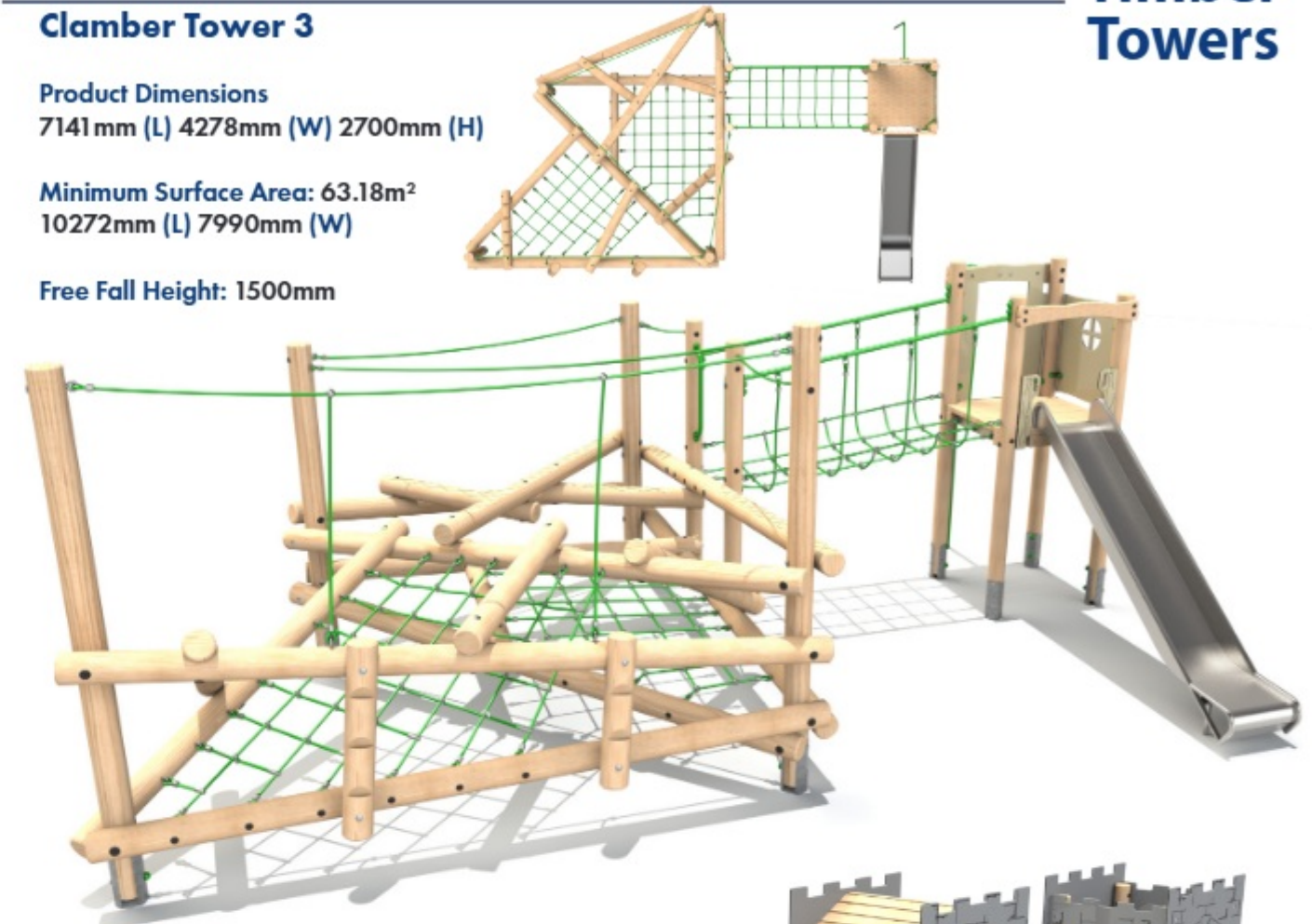
# Timber Towers

## Clamber Tower 3

Product Dimensions  
7141mm (L) 4278mm (W) 2700mm (H)

Minimum Surface Area: 63.18m<sup>2</sup>  
10272mm (L) 7990mm (W)

Free Fall Height: 1500mm

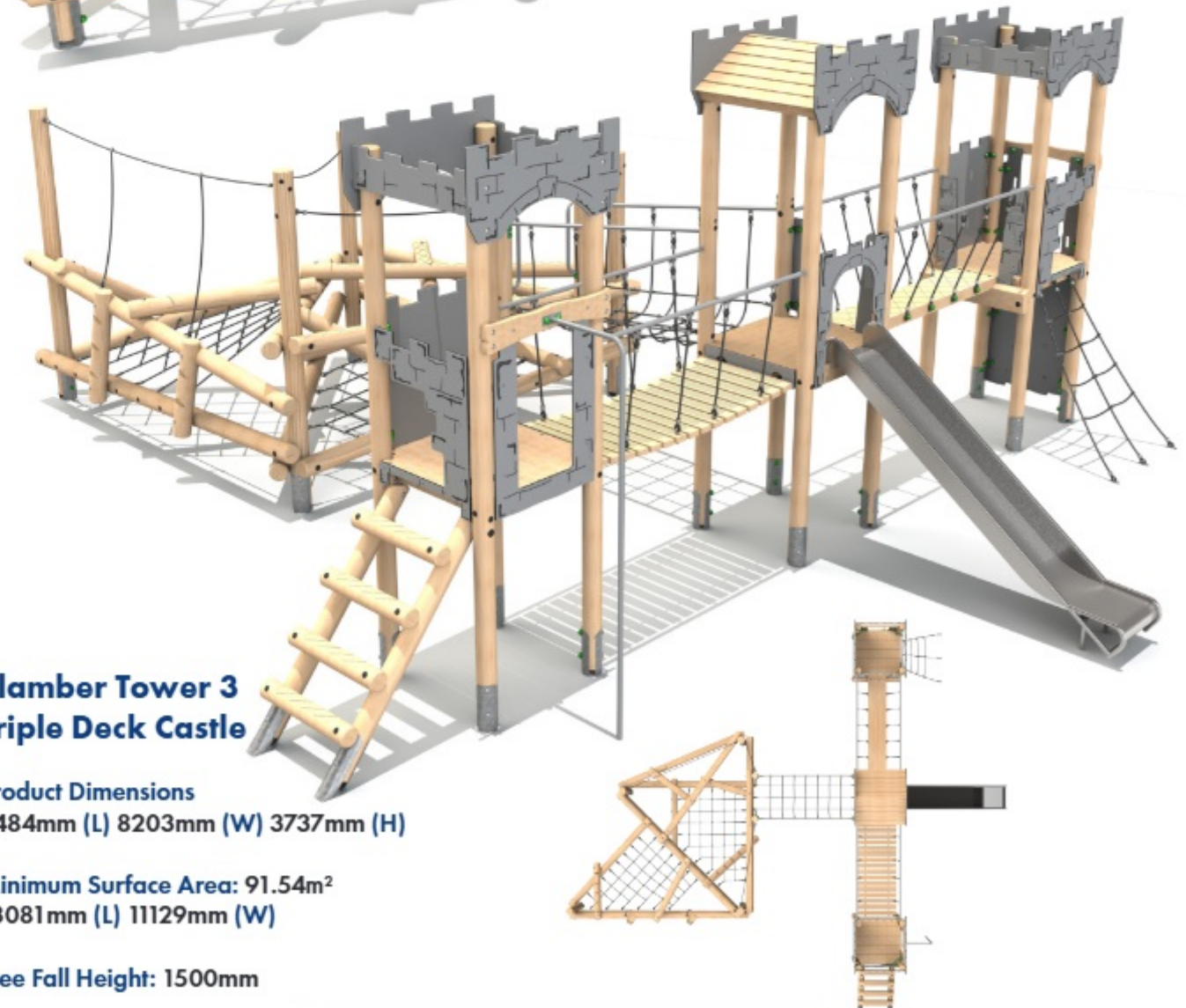


## Clamber Tower 3 Triple Deck Castle

Product Dimensions  
9484mm (L) 8203mm (W) 3737mm (H)

Minimum Surface Area: 91.54m<sup>2</sup>  
13081mm (L) 11129mm (W)

Free Fall Height: 1500mm



Steel feet as standard, bespoke rope colours available.





**Boat Slide Unit**

Product Dimensions  
3830mm (L) 1120mm (W) 2170mm (H)

Minimum Surface Area: 24.5m<sup>2</sup>  
7160mm (L) 3990mm (W)

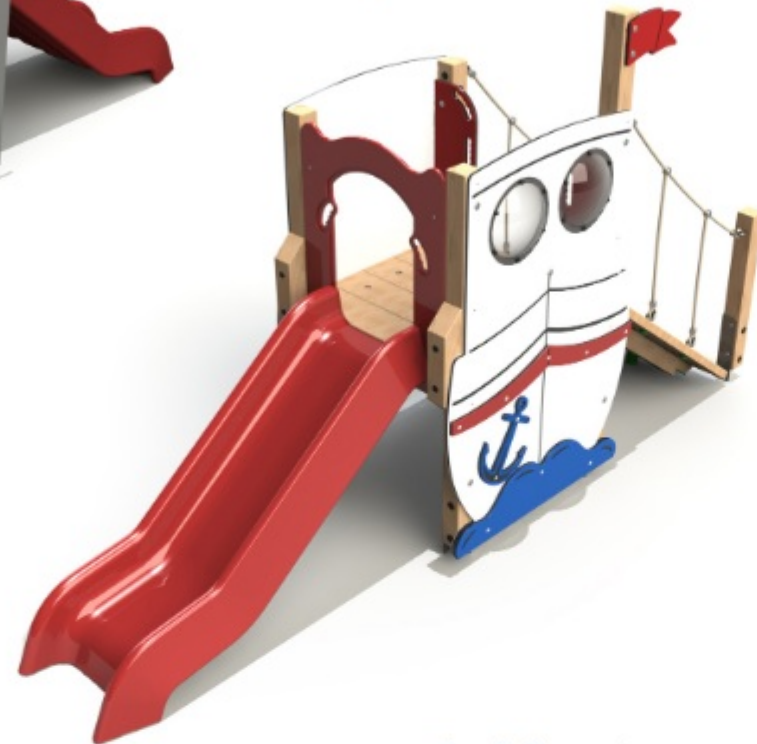
Free Fall Height: 900mm

**Castle Slide Unit**

Product Dimensions  
3830mm (L) 1090mm (W) 2270mm (H)

Minimum Surface Area: 24.5m<sup>2</sup>  
7160mm (L) 3990mm (W)

Free Fall Height: 900mm



**Dump Truck Slide Unit**

Product Dimensions  
4040mm (L) 1060mm (W) 1810mm (H)

Minimum Surface Area: 24.5m<sup>2</sup>  
7160mm (L) 3990mm (W)

Free Fall Height: 900mm

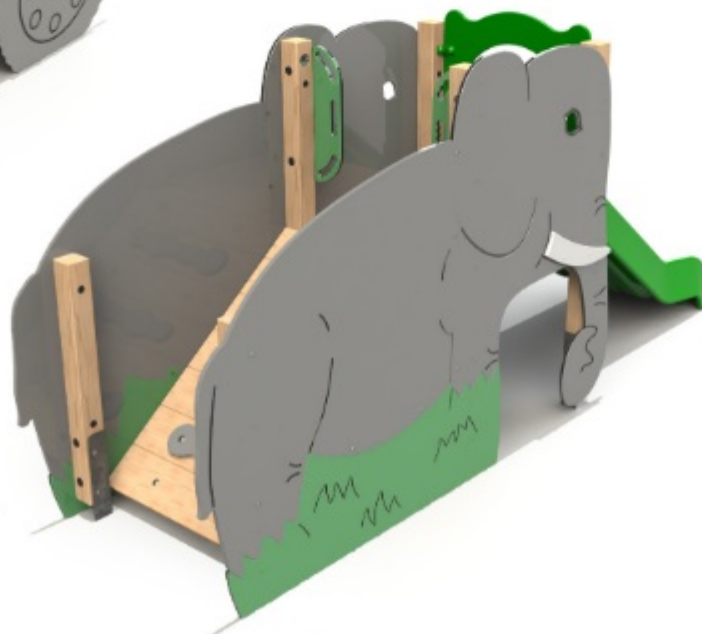


**Elephant Slide Unit**

Product Dimensions  
4040mm (L) 1070mm (W)  
1730mm (H)

Minimum Surface Area: 24.5m<sup>2</sup>  
7160mm (L) 3990mm (W)

Free Fall Height: 900mm



**Rocket Slide Unit**

Product Dimensions  
3840mm (L) 1180mm (W) 2460mm (H)

Minimum Surface Area: 24.5m<sup>2</sup>  
7160mm (L) 3990mm (W)

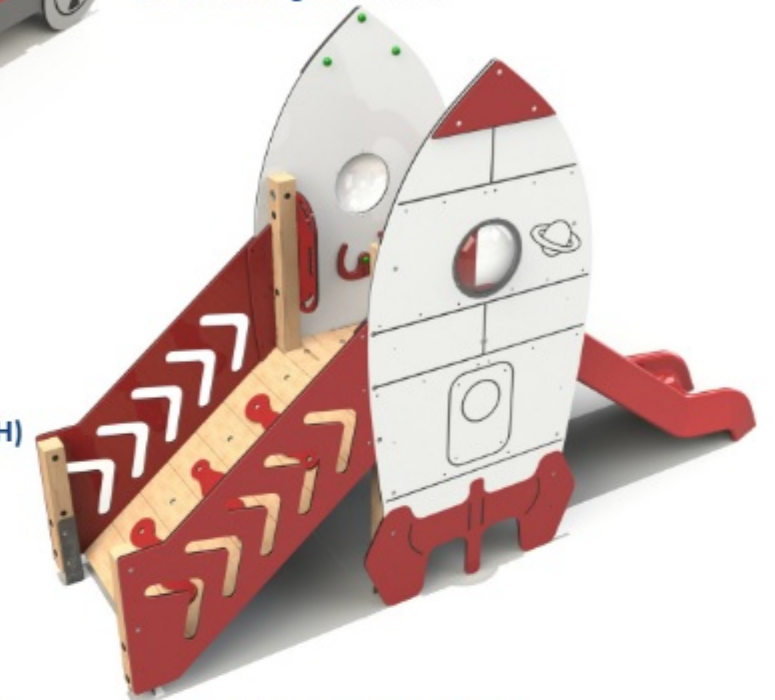
Free Fall Height: 900mm

**Fire Engine Slide Unit**

Product Dimensions  
3880mm (L) 1070mm (W) 1810mm (H)

Minimum Surface Area: 24.5m<sup>2</sup>  
7160mm (L) 3990mm (W)

Free Fall Height: 900mm



**Submarine Slide Unit**

Product Dimensions  
4040mm (L) 1170mm (W) 2310mm (H)

Minimum Surface Area: 24.5m<sup>2</sup>  
7160mm (L) 3990mm (W)

Free Fall Height: 900mm



**Whale Slide Unit**

Product Dimensions  
3970mm (L) 1180mm (W) 2270mm (H)

Minimum Surface Area: 24.5m<sup>2</sup>  
7160mm (L) 3990mm (W)

Free Fall Height: 900mm







The ability to offer unrivalled value for money whilst still ensuring exceptional quality and longevity is key. The Timber Towers range accommodates all ages, budgets and play scheme sizes.

Our uncompromising approach to safety during the design and manufacturing process is paramount. With this in mind all the Timber Towers range are designed to meet the requirements of BS EN 1176.

Choose from either standard towers or create a bespoke design using the interchangeable modular play elements.

In order to ensure the highest level of accuracy, all units are produced on a custom made, state of the art, 6 Axis CNC machine. This technology allows us to offer unparalleled accuracy in the field of play timber production.