

# FRESH QUALITY MEATS



**Harris Ranch**  
**Fresh Beef Back Ribs**  
 C.O.V. Package . . . . . **4.99** Lb.



**Spencer's**  
**Jalapeño Chipotle Sausage**  
 Our Own Recipe . . . . . **6.99** Lb.



**Prairie Fresh Natural Pork**  
**Thick Cut Bone-In Restaurant Style Pork Chops**  
 Lean & Tender **3.99** Lb.



**Prairie Fresh Natural Pork**  
**Fresh Cut Bone-In Pork Steaks**  
 Tender & Lean **3.99** Lb.

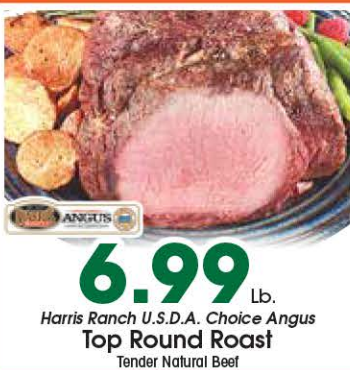


**Prairie Fresh Natural Pork**  
**Bone-In Pork Shoulder Butt Roast**  
 Great for Shredding **2.99** Lb.



**Thick Sliced Platter Bacon**  
 Bulk Style **6.99** Lb.

## HARRIS RANCH BEEF



**Harris Ranch U.S.D.A. Choice Angus**  
**Top Round Roast**  
 Tender Natural Beef **6.99** Lb.



**Harris Ranch U.S.D.A. Choice Angus**  
**Bone-In Rib Eye Steaks**  
 Tender Natural Beef **14.99** Lb.



**Harris Ranch**  
**Meaty Sliced Beef Back Ribs**  
 Lean & Tender **5.99** Lb.



**Harris Ranch**  
**73% Lean Ground Beef Patties**  
 Not to Exceed 27% Fat  
 3 Lb. Pkg. • Frozen **14.99** Pkg.

## SEAFOOD SELECTION



**Fresh!**  
**Atlantic Salmon Fillets**  
 Incredibly Marbled for Excellent Flavor **9.99** Lb.



**Fresh!**  
**Wild Caught Ling Cod Fillets**  
 Beautiful White, Flaky Fish **9.99** Lb.



**Fresh!**  
**Tilapia Fillets**  
 Seafood Favorite **8.99** Lb.



**From the GULF COAST!**  
**Extra Large Domestic Raw Shrimp**  
 16-20 Count per Lb. **11.99** Lb.



**General Mills Cereal**  
 • Cheerios • Honey Nut Cheerios  
 • Cinnamon Toast Crunch  
 • Lucky Charms  
 • Reese's Puffs  
 • Cookie Crisp  
 8.9-12.3 oz. Pkg. • Selected Varieties **3.49**



**Capri Sun Fruit Drink**  
 64 oz. Bottle  
 Selected Varieties **2.99** +CRV



**Duncan Hines Frosting**  
 16 oz. Tub  
 Selected Varieties **2.19**



**Betty Crocker Cookie Mix**  
 17.5 oz. Pouch  
 Selected Varieties **3.79**



**Quaker Large Size Cap'n Crunch or Life Cereal**  
 16.8-18 oz. Pkg. • Selected Varieties **4.99**



**Hunt's Snack Pack 4-Pack Gels or Pudding Snacks**  
 3.25 oz. Cups • Selected Varieties **1.79**



**Mrs. Butterworth's or Log Cabin Original Syrup**  
 24 oz. Bottle **4.49**



**Club Crackers**  
 13.4 oz. Pkg.  
 Selected Varieties **4.49**



**Nature Valley Granola Bars**  
 • Crunchy • Sweet & Salty  
 • Fruit & Nut  
 4.5-8.94 oz. Pkg. • Selected Varieties **3.49**



**Betty Crocker Fruit Snacks**  
 • Fruit by the Foot  
 • Fruit Roll-Ups  
 • Gushers • Shapes  
 4.5-5.1 oz. Pkg. • Selected Varieties **3.49**



**Duncan Hines Brownie Mix**  
 18.2-18.3 oz. Pkg.  
 Selected Varieties **2.19**



**Pam Cooking Spray**  
 5-6 oz. Aerosol Can  
 Selected Varieties **3.99**

## SODA SAVINGS



**Celsius Sparkling Energy Drink**  
 12 oz. Slim Can  
 Selected Varieties **3\$6** FOR +CRV



**Poppi Prebiotic Soft Drink**  
 12 oz. Can  
 Selected Varieties **3\$5** FOR



**7-Up Family 10-Pack Soft Drinks**  
 7.5 oz. Mini Cans  
 Selected Varieties **5.99** +CRV



**Pepsi Family 24-Pack Soft Drinks**  
 12 oz. Cans  
 Selected Varieties **14.99** +CRV

## DELI DELIGHTS



**Yoplait Go-Gurt 8-Pack Yogurt Snacks**  
 1.6 oz. Pkg. • Chilled  
 Selected Varieties **2\$6** FOR



**Kraft American Singles**  
 24 Sliced  
 16 oz. Pkg. • Chilled **4.99**



**Claussen Dill Pickles**  
 20-32 oz. Jar • Chilled  
 Selected Varieties **3.99**



**Starbucks Iced Coffee or Espresso**  
 40-48 oz. Bottle • Chilled  
 Selected Varieties **6.99** +CRV