



**2.7**  
FACADES

**TELEPHONE HOUSE  
SHEFFIELD  
ARCHITECTURAL FIN  
SCREEN & FACADE**

[www.twopointseven.co.uk](http://www.twopointseven.co.uk)



# Brise Soleil, Architectural Fin Screen, Facade & Posts



Project: Telephone House

Client: GEO Houlton & Sons LTD

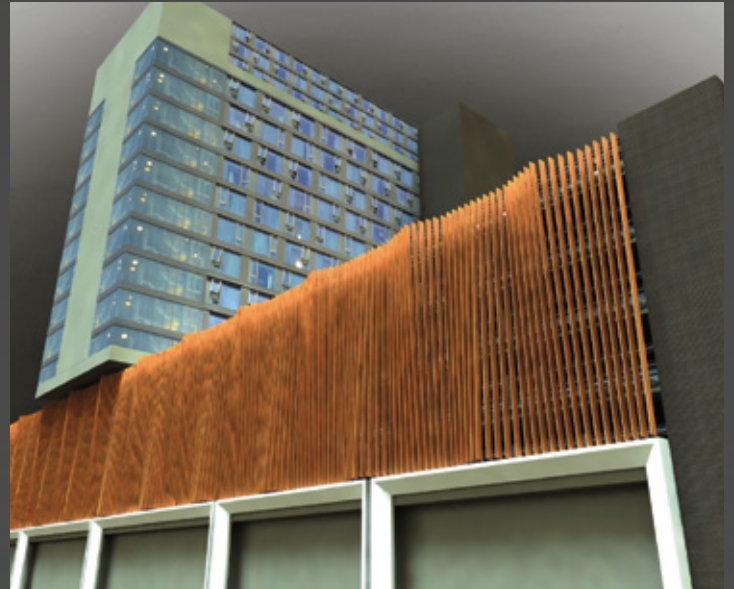
Architect: Alan Wood & Partners

Product: Bespoke Brise Soleil, Fin Facade, Perforated Panels & Goal Posts.

Colour: Oxide Patina 2 from Two Point Seven COR-TEN Oxide Range.

The City of Sheffield is now morphing into a rising star of the UK arts and culture scene, from its previous being as an industrial powerhouse, famous for the production of stainless-steel cutlery.

Telephone house is an iconic building built in 1972 in the heart of Sheffield City Centre. Prior to its renovation it was the head office for British Telecom, providing telecommunications to the City of Sheffield.



[www.twopointseven.co.uk](http://www.twopointseven.co.uk)







The installation of the new Solar Shading system will give the carpark a new lease of life. The wave formed within the façade will catch the eyes of passers-by. The addition of lighting to the Solar Shading will ensure that the façade also offers excellent visual appeal both night and day.



The wave feature façade will include a bespoke Aluminum two part extruded secret fix fin coated in Oxide Patina 2 from Two Point Seven COR-TEN Oxide Range. Construction went ahead in November with completion expected May 2021.