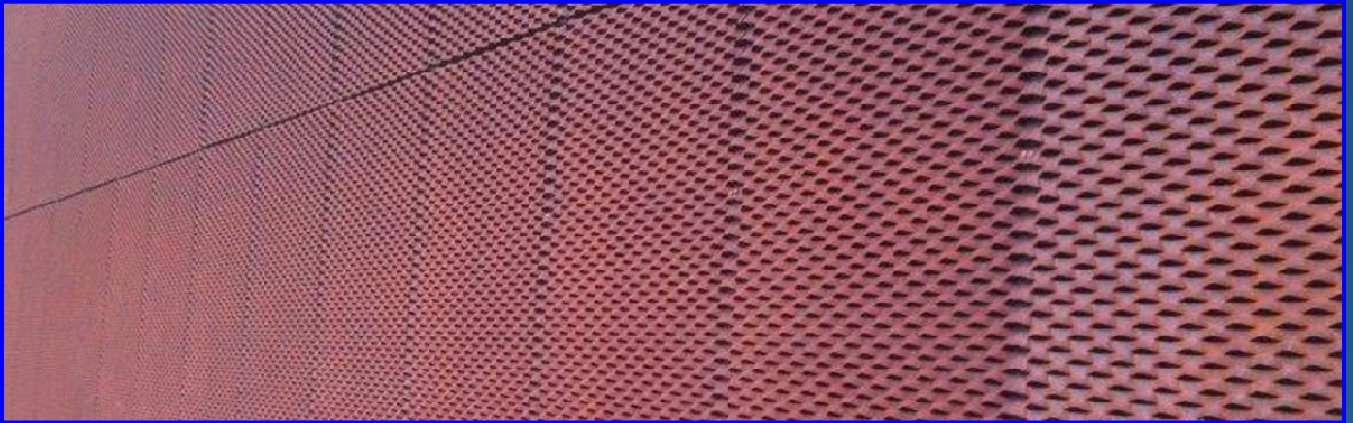




EXPANDED MESH DATA SHEET

Expanded Mesh Cladding Systems

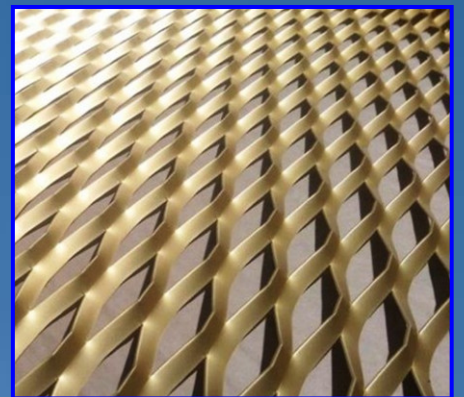
Expanded architectural mesh is one of the most popular forms of cladding in multi-storey car parks. It provides a wide choice of styles and aesthetic appeal, while offering great functionality in providing ventilation, protection against driving rain and pedestrian barrier loads.



Architects and clients also favour architectural expanded mesh for facade cladding, solar shading and fencing because of the aesthetic qualities and the creative freedom that the material and production process provides.

Expanded mesh can be manufacture from aluminium, mild steel, galvanised steel, corten or weathering steel and stainless steel in various gauges from 1-6mm, with mill finish, polyester powder coated, anodised or galvanised finish to suit each project.

The expanding process involves slitting and stretching the metal to create holes rather than punching them out. This provides cost savings, especially compared to other metal processing methods. For example, when perforating metals, all of the holes you see are wasted and must be paid for by you. Expanding metals is a traditional method, which complies with modern green engineering standards.



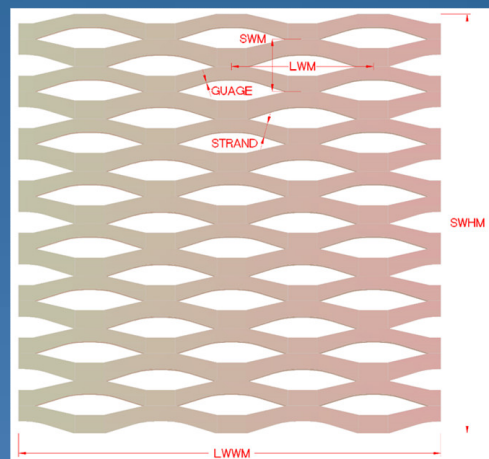
With comprehensive in house design facilities we are able to offer a complete package from development of the architectural expanded mesh specification through to design, fabrication, supply and installation of the product.

We offer a complete range of thoroughly developed integrated components and accessories, such as capping's and trims that neatly frame any exposed edges, as well as anti-climb rails and security fastener options.

The table below details Two Point Seven Facades Ltd most frequently used mesh profile specifications. The list is not exhaustive though as we are constantly developing new tools to meet Architect specifications. The only fixed dimension is the Long Way Measurement (LWD), all other dimensions can be changed to suit your requirements.

REF:	TOOL TYPE	LWD	SWD	STRAND (W)	GAUGE	% FREE AREA	PROFILE THICKNESS
LT62	LT	62	27	9	3	40.4	13
LT62WAVE	LT	62	29	9.5	3	42.5	14
LT115PRIVACY	LT	115	40	20	3	7	14
LT115	LT	115	46	15	3	46.2	21
LTH115	LTH	115	48	20	3	46.2	21
LTH125	LTH	125	49	20	3	24	19
LTH150	LTH	150	56	20	3	51.4	29
LT150	LT	150	64	20	3	51.4	29
LTH165	LTH	165	55	20	3	37	24
LTH200	LTH	200	72	20	3	50.5	32
LT280	LT	280	98	30	3	54.6	44

- LT: Narrow tool mark mirrored aperture
- LTH: Wide tool mark hexagonal aperture
- LWD: Long way dimension
- SWD: Short way dimension
- STRAND: Strand or rib width
- GAUGE: Material thickness
- FV: Front view tool mark visible
- RV: Rear view no tool mark
- INV: Mesh panel inverted
- LWWM: Long way width measurement (panel width).
- SWHM: Short way height measurement (panel height).



By inverting the expanded mesh panels they become more obscure. A chequer board effect can be achieved by rotating/inverting adjacent panels. Two Point Seven Facades Ltd offer a range of expanded mesh, with first class innovation, design and technical support to suit all applications. Email: info@twopointseven.co.uk