



FACADES

**PERFORMANCE
ARCHITECTURAL
MESH FACADES**

www.twopointseven.co.uk



Perforated

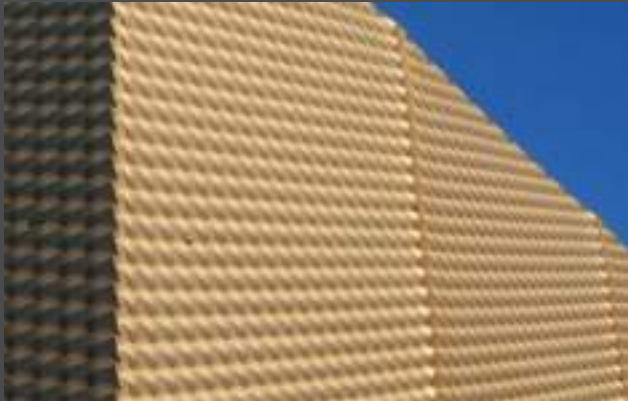
Cladding a building with perforated metal is a very effective way to enliven the facade of what would otherwise be a simple cubed structure.

Perforated cladding has the ability to add depth, texture and intrigue to a façade. With over 1000 different perforated patterns at our disposal, we offer freedom of choice and superior quality to suit the needs of your project, large or small.

Pattern Perforated

Pattern perforated mesh facades comprise of bespoke perforated panels that use the latest computer software to pixelate images, logos, letters and numbers.

Applied to one or a number of panels, providing the designer with an ability to scale up images by 'jigsaw-ing' the cladding to create a single image across the entire façade, making your building stand out from the crowd.



Expanded

A precision engineered and completely integrated facade solution that has enabled expanded mesh cladding to become the defining feature of some of the world's most remarkable buildings.

The expanded mesh manufacturing process produces a three-dimensional material which can be opaque when viewed from one direction, and transparent from the other.



Rain Screen

Rainscreen Façades are cladding systems applied either during the initial construction or as over-cladding for refurbishment of an existing building.

They provide a weather resistant decorative skin, fixed to a structure by means of a supporting grid, and maintain a cavity which is ventilated and drained, between itself and the primary structure.

Our Service

Two Point Seven Facades Ltd offer a complete design package for our Architectural Mesh Facades, which includes the structural framing and your choice of Expanded Mesh & Perforated Mesh.

Through the design of both the supporting structure and cladding panels, our co-ordinated detailing provides a robust, fast and cost effective approach to facade design and installation.



Benefits

True co-ordination between interfaces.

Single design submissions.

In-house engineering service.

Practical and buildable design solutions .

Bespoke design tailored to suit your requirements.