



TELEPHONE HOUSE SHEFFIELD ARCHITECTURAL FIN SCREEN & FACADE

www.twopointseven.co.uk

Brise Soleil, Architectural Fin Screen, Facade & Posts

Project: Telephone House
Client: GEO Houlton & Sons LTD
Architect: Alan Wood & Partners
Product: Bespoke Brise Soleil, Fin Facade, Perforated Panels & Goal Posts.
Colour: Oxide Patina 2 from Two Point Seven COR-TEN Oxide Range.



Introduction

The City of Sheffield is now morphing into a rising star of the UK arts and culture scene, from its previous being as an industrial powerhouse, famous for the production of stainless-steel cutlery. It is only right then, that this iconic, and sadly, sorry looking carpark, should be brought into the twenty first century using inspiration that reflects on the City's heritage.

Telephone house is an iconic building in the heart of Sheffield City Centre.

Prior to its renovation by Create Construction, it was the head office for British Telecom, providing tele-communications to the City of Sheffield.

Before

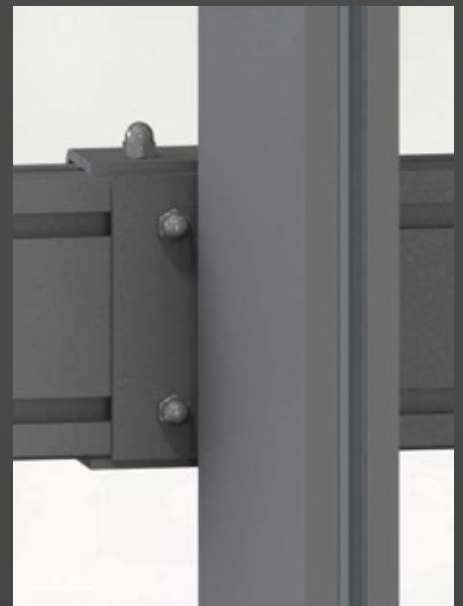
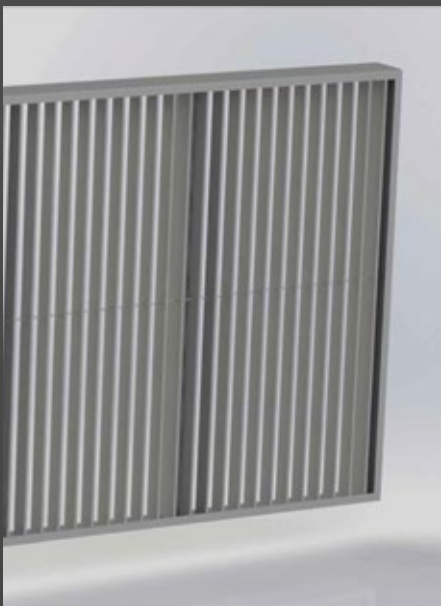
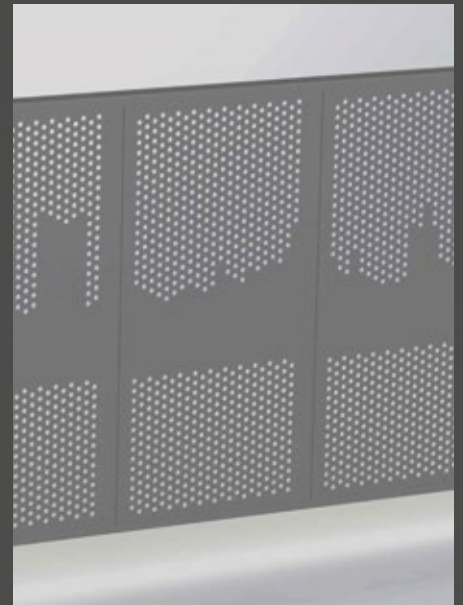


Telephone house was originally built in 1972, at a time when concrete and stone were popular architectural facades. It would be fair to say, that the building is now in need of a facelift.

The building has recently benefitted from a renovation to the upper accommodation, which involved forming a new, 368 bed student accommodation facility, unfortunately, this has left the car park feeling a little sorry for itself.



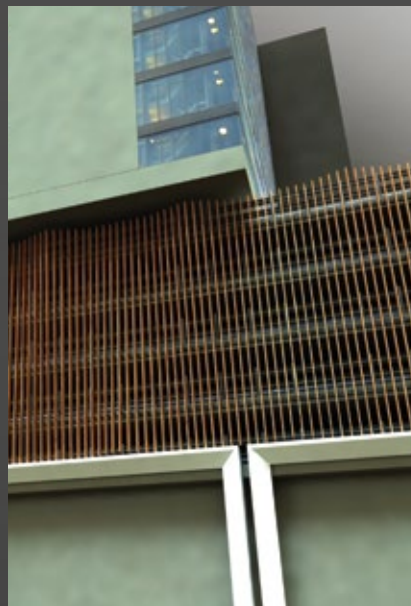
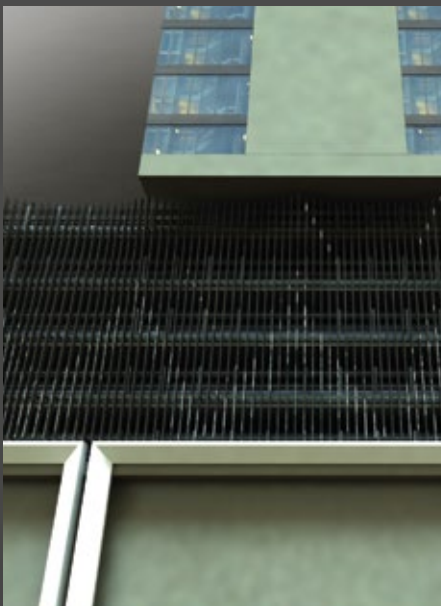
Stage 1



The design intent is to provide a Brise Soleil system, that mimics a magnetic knife rack, or a set of knives stacked in a cutlery drawer, to transform this ugly duckling into a swan.



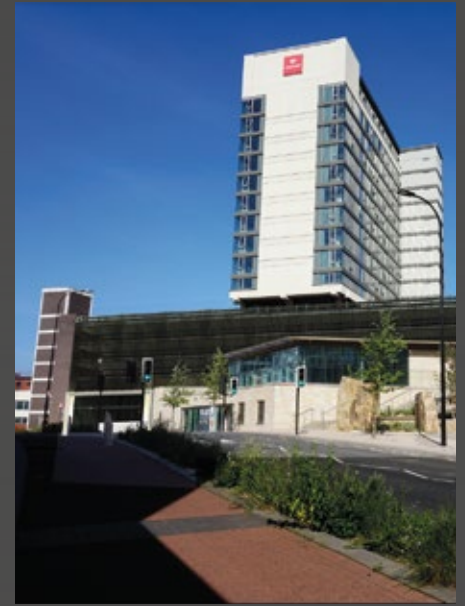
Stage 2



The installation of the new Solar Shading system will give the carpark a new lease of life. The wave formed within the façade will catch the eyes of passers-by. The addition of lighting to the Solar Shading will ensure that the façade also offers excellent visual appeal both night and day.



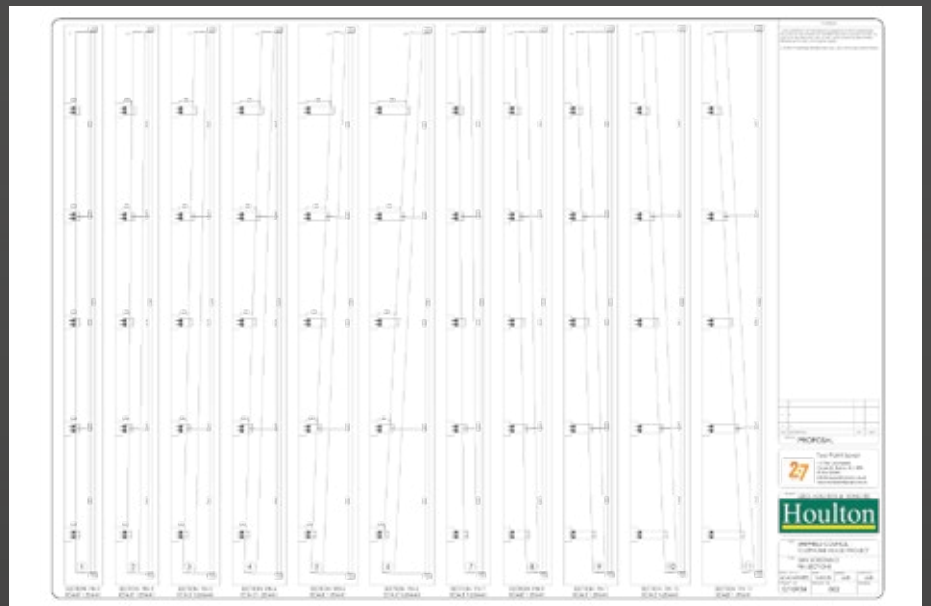
Stage 3



What was once a sight for sore eyes, will become a beacon of architectural grandeur, cementing the City of Sheffield's position on the map.



Planning



Final Note

On the 17th October 2020 planning was awarded for the renovation to Wellington Street MSCP. Shortly after Two Point Seven were appointed to manufacture and install the new wave feature façade and goal posts to Charter Row and Perforated fencing to Rockingham Street. The wave feature façade will include a bespoke Aluminum two part extruded secret fix fin coated in Oxide Patina 2 from Two Point Seven COR-TEN Oxide Range. Construction went ahead in November with completion expected May 2021.

